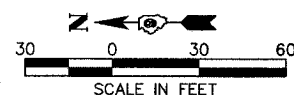




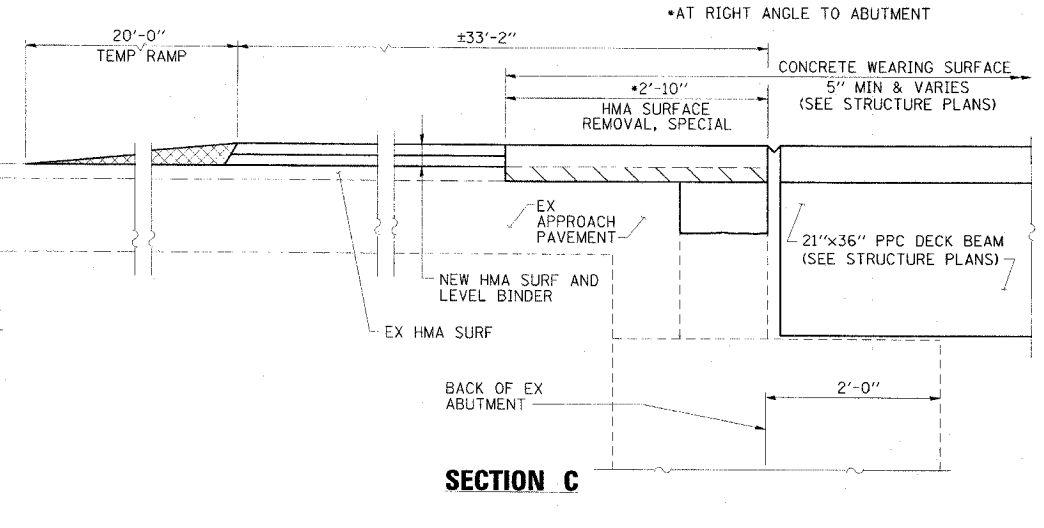
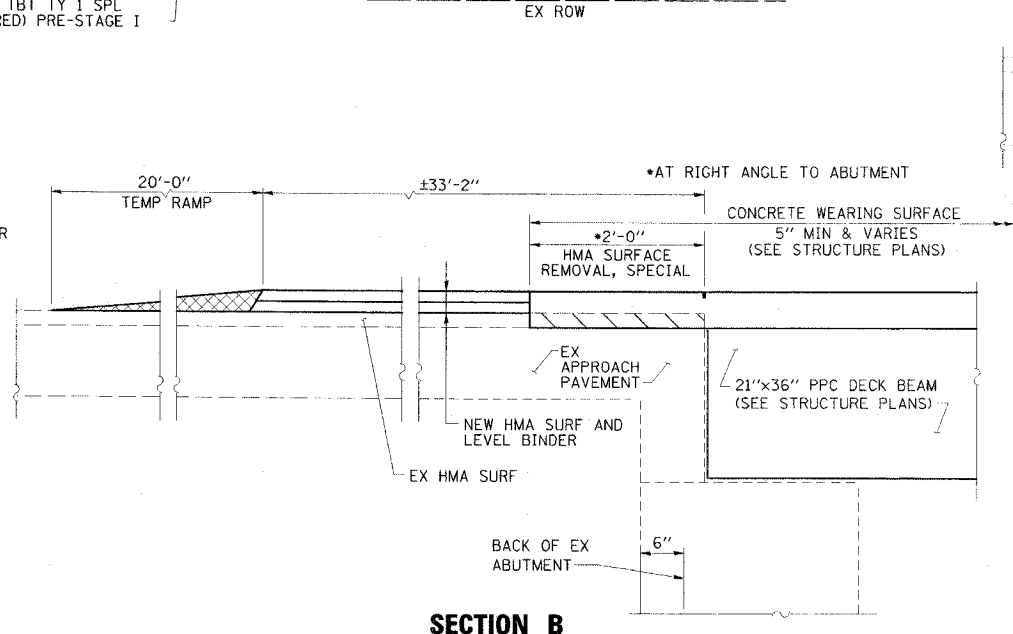
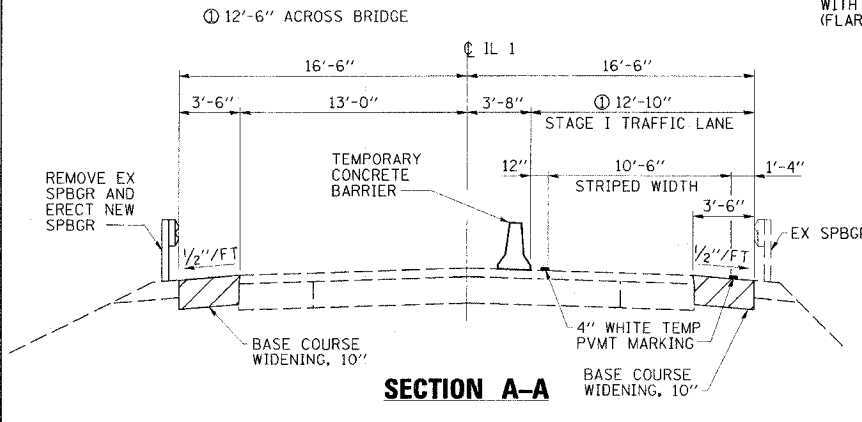
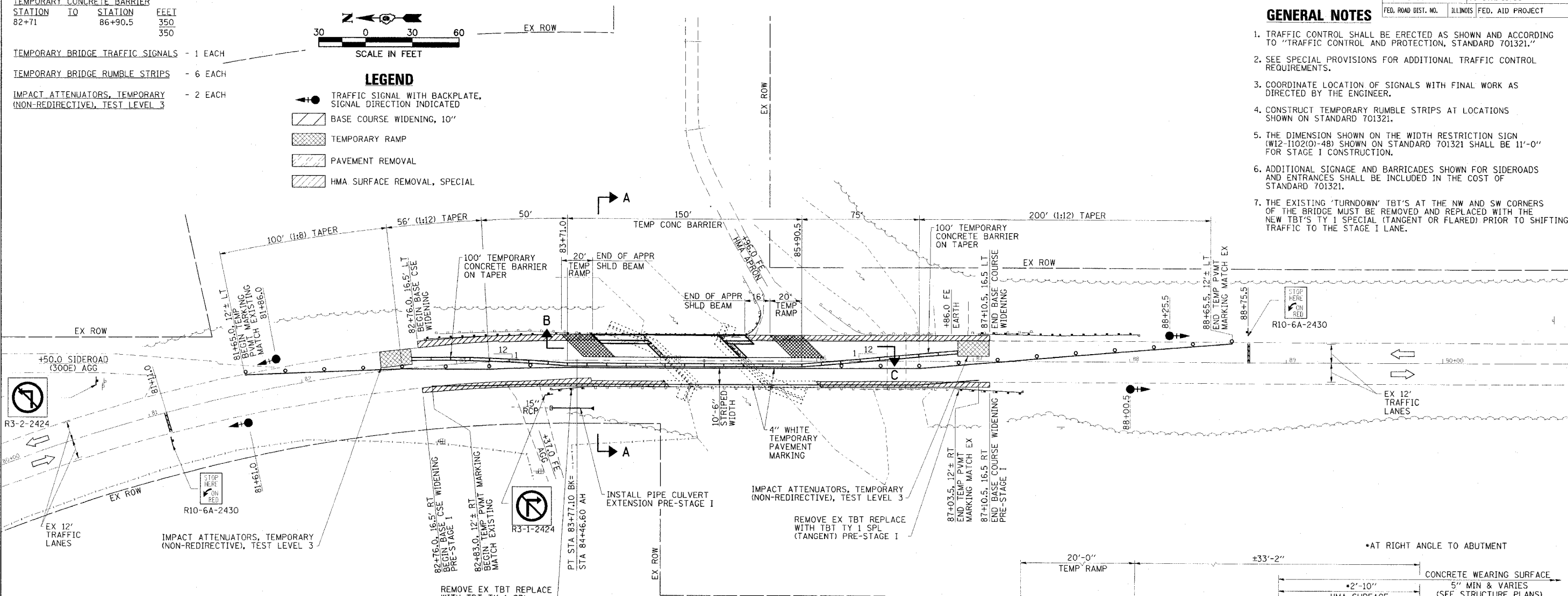
**SCHEDULE OF QUANTITIES**

TEMPORARY CONCRETE BARRIER	STATION TO	STATION	FEET
	82+71	86+90.5	350

- TEMPORARY BRIDGE TRAFFIC SIGNALS - 1 EACH
- TEMPORARY BRIDGE RUMBLE STRIPS - 6 EACH
- IMPACT ATTENUATORS, TEMPORARY (NON-REDIRECTIVE), TEST LEVEL 3 - 2 EACH



- LEGEND**
- TRAFFIC SIGNAL WITH BACKPLATE, SIGNAL DIRECTION INDICATED
  - BASE COURSE WIDENING, 10"
  - TEMPORARY RAMP
  - PAVEMENT REMOVAL
  - HMA SURFACE REMOVAL, SPECIAL



FAP RTE	SECTION	COUNTY	TOTAL SHEETS	SHEET NO.
782	110BR-1	WHITE	73	12

CONTRACT NO. 78027

STA. 80+00 TO STA. 91+00

FED. ROAD DIST. NO. ILLINOIS FED. AID PROJECT

**GENERAL NOTES**

- TRAFFIC CONTROL SHALL BE ERECTED AS SHOWN AND ACCORDING TO "TRAFFIC CONTROL AND PROTECTION, STANDARD 701321."
- SEE SPECIAL PROVISIONS FOR ADDITIONAL TRAFFIC CONTROL REQUIREMENTS.
- COORDINATE LOCATION OF SIGNALS WITH FINAL WORK AS DIRECTED BY THE ENGINEER.
- CONSTRUCT TEMPORARY RUMBLE STRIPS AT LOCATIONS SHOWN ON STANDARD 701321.
- THE DIMENSION SHOWN ON THE WIDTH RESTRICTION SIGN (W12-1102(O)-48) SHOWN ON STANDARD 701321 SHALL BE 11'-0" FOR STAGE I CONSTRUCTION.
- ADDITIONAL SIGNAGE AND BARRICADES SHOWN FOR SIDEROADS AND ENTRANCES SHALL BE INCLUDED IN THE COST OF STANDARD 701321.
- THE EXISTING 'TURNDOWN' TBT'S AT THE NW AND SW CORNERS OF THE BRIDGE MUST BE REMOVED AND REPLACED WITH THE NEW TBT'S TY 1 SPECIAL (TANGENT OR FLARED) PRIOR TO SHIFTING TRAFFIC TO THE STAGE I LANE.

**ESCA CONSULTANTS, INC.**

DESIGNED BY:	DAJ	10/07
DRAWN BY:	HAS	10/07
CHECKED BY:	MTD	02/08
APPROVED BY:	RDP	02/08

**STAGE I CONSTRUCTION**  
**FAP RTE 782 (IL 1)**  
**SECTION 110BR-1**  
**WHITE COUNTY**