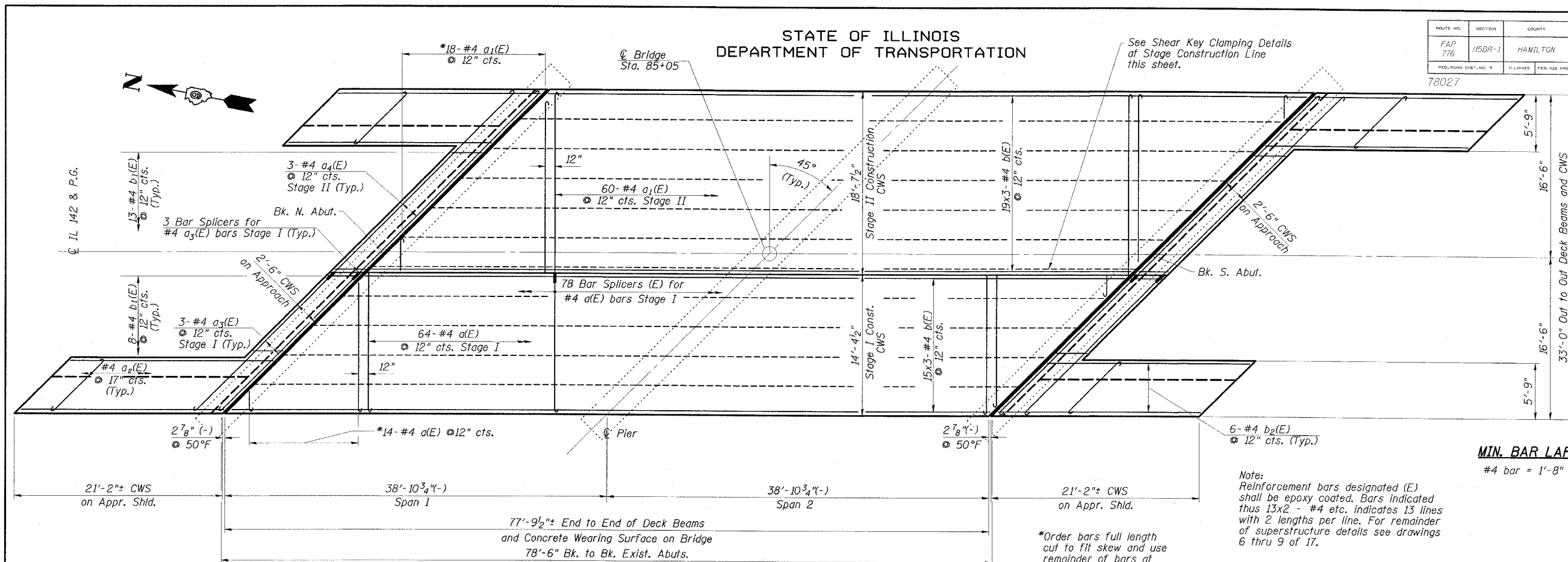


STATE OF ILLINOIS
DEPARTMENT OF TRANSPORTATION

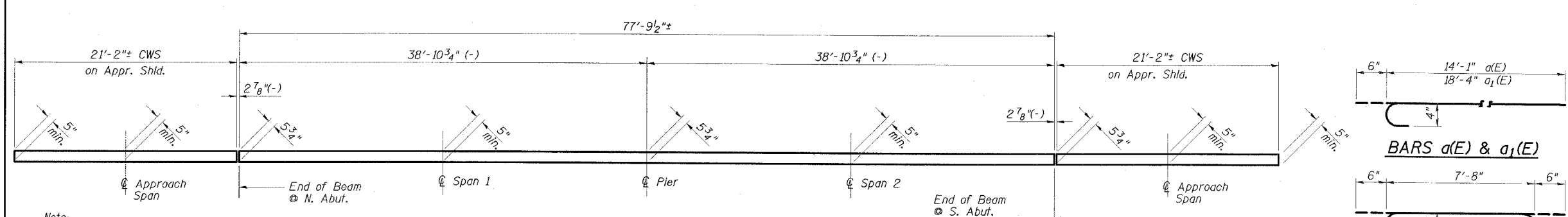
ROUTE NO.	SECTION	COUNTY	ASSETS	SHEET NO.	SHEET NO. 5 17 SHEETS
FAP 776	115BR-1	HAMILTON	73	22	
FED. ROAD DIST. NO. 78027		ILLINOIS		FED. AID PROJECT	



Note:
Reinforcement bars designated (E) shall be epoxy coated. Bars indicated thus 13x2 - #4 etc. indicates 13 lines with 2 lengths per line. For remainder of superstructure details see drawings 6 thru 9 of 17.

MIN. BAR LAP
#4 bar = 1'-8"

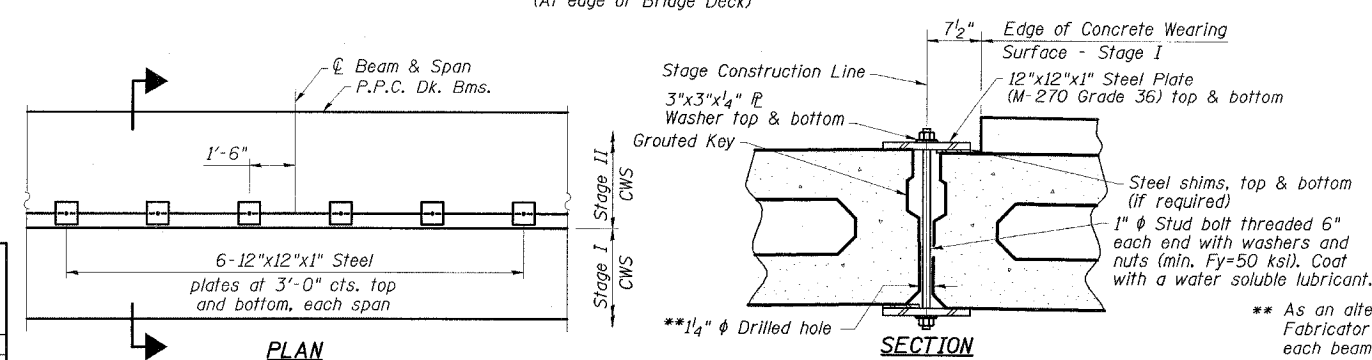
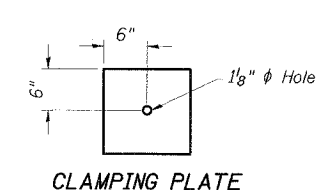
*Order bars full length cut to fit skew and use remainder of bars at other end of deck.



Note:
Greater thickness is required at centerline of superstructure to conform to cross section slopes shown on Dwg. 7 of 17.

CONCRETE WEARING SURFACE
BILL OF MATERIAL

Bar	No.	Size	Length	Shape
a(E)	78	#4	14'-7"	U
a ₁ (E)	78	#4	18'-10"	U
a ₂ (E)	48	#4	8'-8"	U
a ₃ (E)	6	#4	20'-5"	U
a ₄ (E)	6	#4	26'-5"	U
b(E)	102	#4	26'-10"	—
b ₁ (E)	42	#4	3'-0"	—
b ₂ (E)	24	#4	20'-9"	—
Reinforcement Bars, Epoxy Coated		Pound	4460	
Concrete Wearing Surface, 5"		Sq. Yd.	357	
Bridge Deck Grooving		Sq. Yd.	330	
Bar Splicers		Each	84	
Protective Coat		Sq. Yd.	357	



** As an alternate to the drilled holes, the Contractor may request the Fabricator to cast 2" diameter semi-circular recesses in the sides of each beam adjacent to the Stage Construction Line. These recesses should align to form a hole at the appropriate location for the clamping device bolts. If the Contractor elects to use this alternate, the details shall be identified on the shop drawings.

ESCA
CONSULTANTS, INC.

DESIGNED BY:	DAJ	09/07
DRAWN BY:	HAS	09/07
CHECKED BY:	JMS/ELH	02/08
APPROVED BY:	RDP	02/08

SUPERSTRUCTURE
IL 142 OVER BEAR CREEK
FA ROUTE 776 - SECTION 115BR-1
HAMILTON COUNTY
STATION 85+05.00
STRUCTURE NO. 033-0016