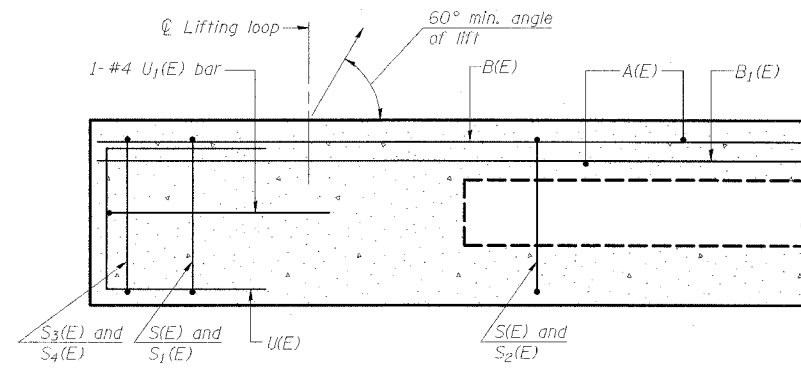


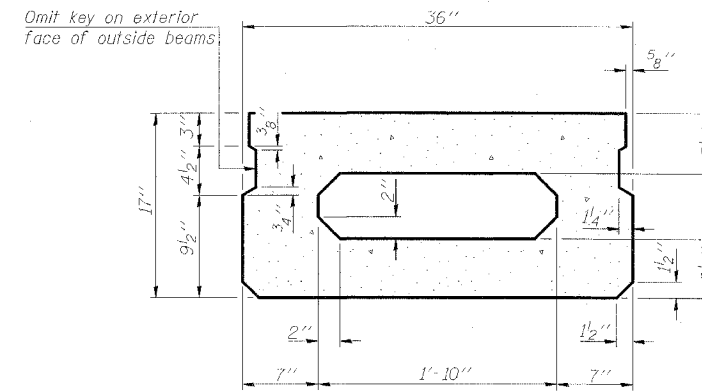
STATE OF ILLINOIS
DEPARTMENT OF TRANSPORTATION

ROUTE NO.	SECTION	COUNTY	SHEET NO.	SHEET NO.
FAP 776	115BR-1	HAMILTON	73	23
FED. ROAD DIST. NO. 5		ILLINOIS	FED. AID PROJECT	
78027				

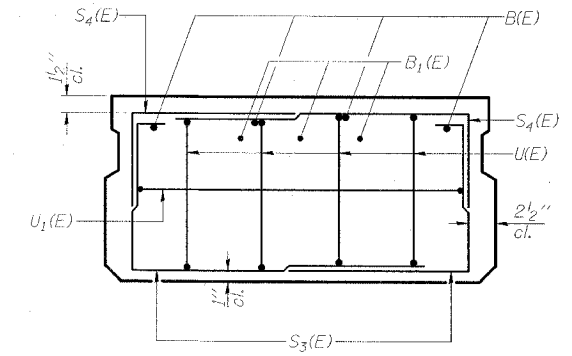
SHEET NO. 6
17 SHEETS



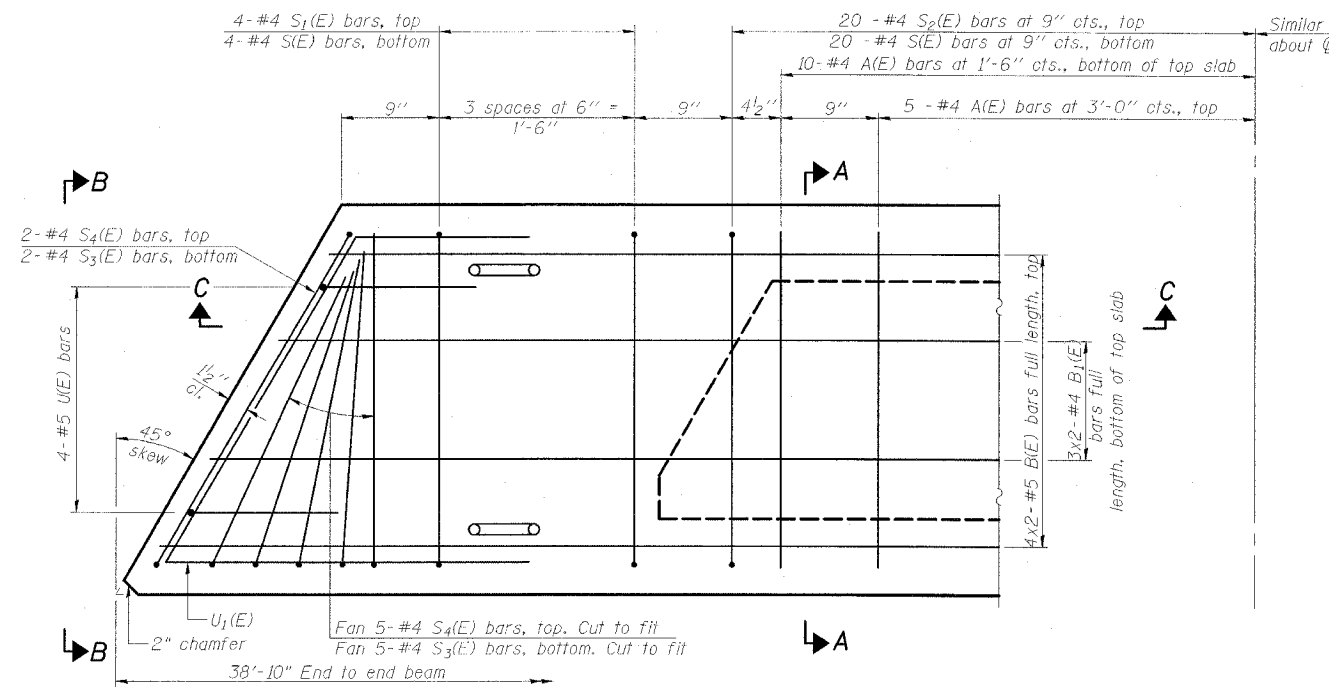
SECTION C-C



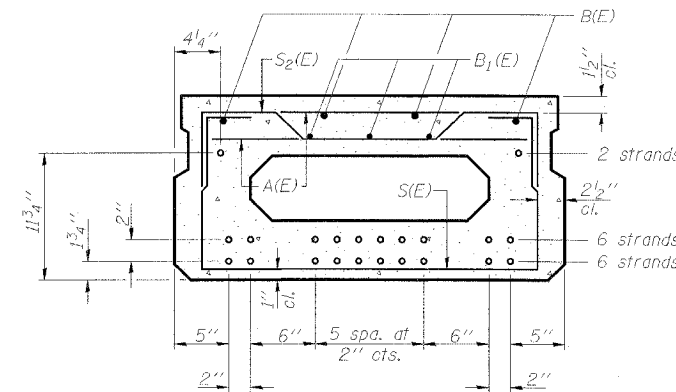
SECTION A-A
(Showing dimensions)



VIEW B-B



PLAN VIEW



SECTION A-A

(Showing reinforcement and permissible strand locations)

14 - 1/2" diameter strands, each strand stressed to 30,900 lbs.

Note: Place the number of strands specified in each row symmetrically about the centerline of beam in the permissible strand locations shown.

BAR LIST
ONE BEAM ONLY
(For information only)

Bar	No.	Size	Length	Shape
A(E)	30	#4	2'-7"	—
B(E)	8	#5	21'-10"	—
B1(E)	6	#4	21'-0"	—
S(E)	48	#4	5'-9"	U
S1(E)	8	#4	4'-11"	U
S2(E)	40	#4	5'-2"	U
S3(E)	14	#4	5'-2"	U
S4(E)	14	#4	4'-9"	U
U(E)	8	#5	3'-8"	U
U1(E)	2	#4	8'-7"	U

Note: See sheet 7 of 17 for additional details and Bill of Material.

Notes: 1. Spacing of S(E) and S2(E) bars may be adjusted up to 4" in the immediate area of the transverse tie diaphragms to miss the block outs for the transverse ties.

2. Adjust reinforcement locations to clear dowel holes at fixed ends.

ESCA
CONSULTANTS, INC.

DESIGNED BY:	DAJ	09/07
DRAWN BY:	HAS	09/07
CHECKED BY:	JMS/ELH	01/08
APPROVED BY:	RDP	01/08

SUPERSTRUCTURE DETAILS
IL 142 OVER BEAR CREEK
FAP ROUTE 776 - SECTION 115BR-1
HAMILTON COUNTY
STATION 85+05.00
STRUCTURE NO. 033-0016