

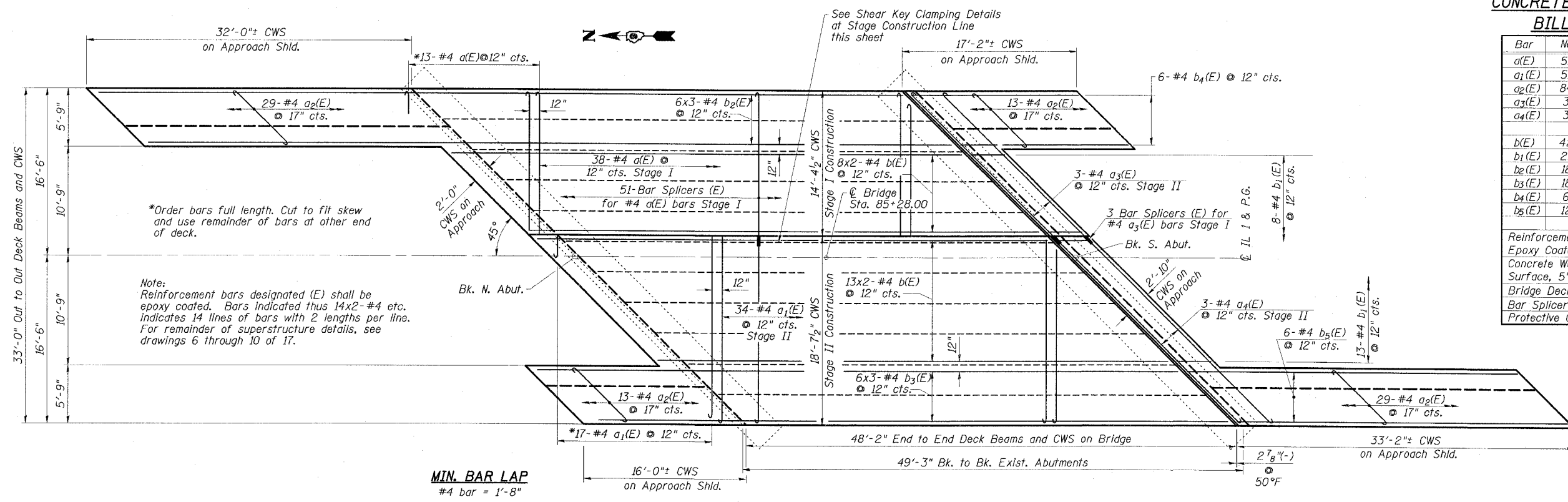
STATE OF ILLINOIS
DEPARTMENT OF TRANSPORTATION

ROUTE NO.	SECTION	COUNTY	DATE	SHEET	SHEET NO.
FAP 782	110BR-1	WHITE	73	50	17 SHEETS
FED. ROAD DIST. NO. 4		ILLINOIS	FED. AID PROJECT		

78027

CONCRETE WEARING SURFACE
BILL OF MATERIAL

Bar	No.	Size	Length	Shape	
a(E)	51	#4	14'-7"	┌──┐	
a ₁ (E)	51	#4	18'-10"	┌──┐	
a ₂ (E)	84	#4	8'-8"	┌──┐	
a ₃ (E)	3	#4	20'-5"	┌──┐	
a ₄ (E)	3	#4	26'-5"	┌──┐	
b(E)	42	#4	26'-0"	──	
b ₁ (E)	21	#4	3'-6"	──	
b ₂ (E)	18	#4	27'-6"	──	
b ₃ (E)	18	#4	22'-2"	──	
b ₄ (E)	6	#4	16'-9"	──	
b ₅ (E)	12	#4	32'-8"	──	
Reinforcement Bars, Epoxy Coated				Pound	3430
Concrete Wearing Surface, 5"				Sq. Yd.	256
Bridge Deck Grooving				Sq. Yd.	234
Bar Splicers				Each	54
Protective Coat				Sq. Yd.	256

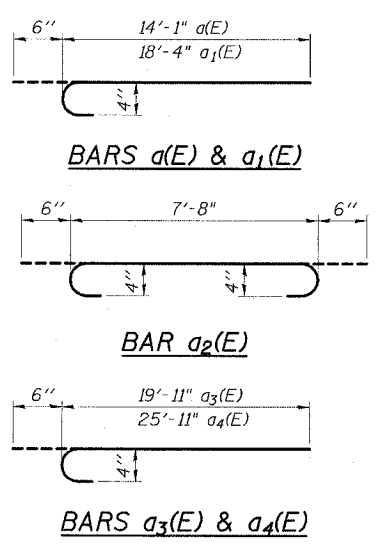


*Order bars full length. Cut to fit skew and use remainder of bars at other end of deck.

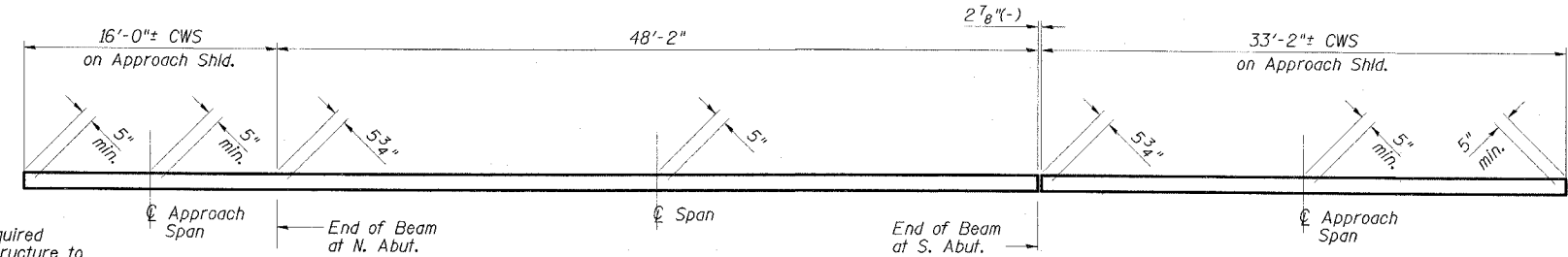
Note: Reinforcement bars designated (E) shall be epoxy coated. Bars indicated thus 14x2-#4 etc. indicates 14 lines of bars with 2 lengths per line. For remainder of superstructure details, see drawings 6 through 10 of 17.

MIN. BAR LAP
#4 bar = 1'-8"

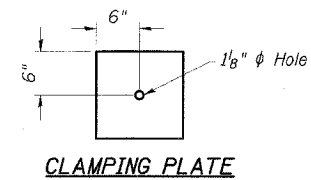
PLAN - WEARING SURFACE



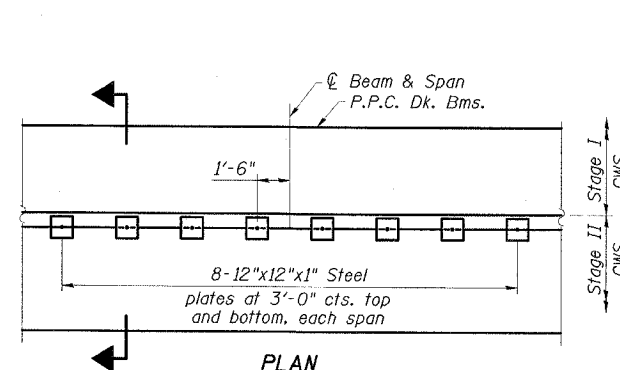
Note: Greater thickness is required at centerline of superstructure to conform to cross section slopes shown on Dwg. 7 of 17.



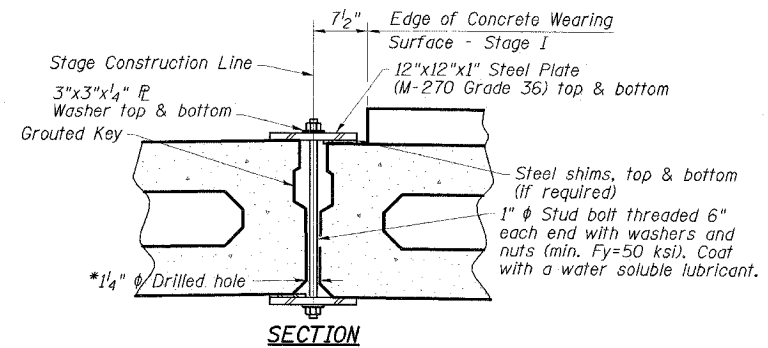
REINFORCED CONCRETE WEARING SURFACE PROFILE
(At West edge of Bridge Deck; East side similar)



Notes: See Stage Construction Details for traffic lanes. Cost is included with Precast Prestressed Concrete Deck Beams.



SHEAR KEY CLAMPING DETAILS



SECTION

ESCA
CONSULTANTS, INC.

DESIGNED BY:	DAJ	09/07
DRAWN BY:	HAS	09/07
CHECKED BY:	JMS/ELH	01/08
APPROVED BY:	RDP	01/08

SUPERSTRUCTURE
IL 1 OVER INDIAN CREEK
FAP ROUTE 782 - SECTION 110BR-1
WHITE COUNTY
STATION 85+28.00
STRUCTURE NO. 097-0026