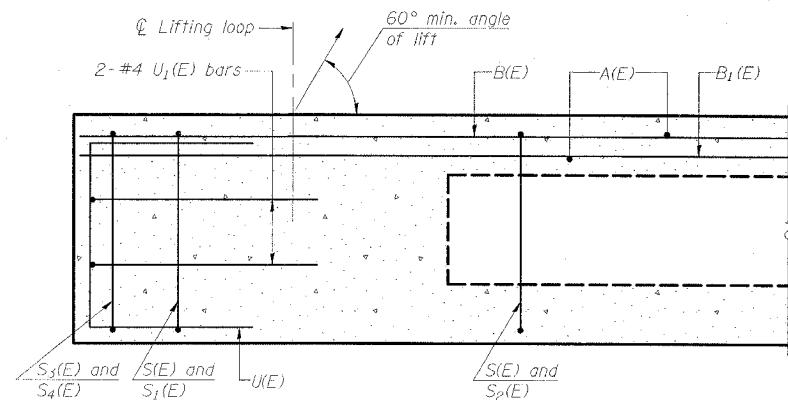
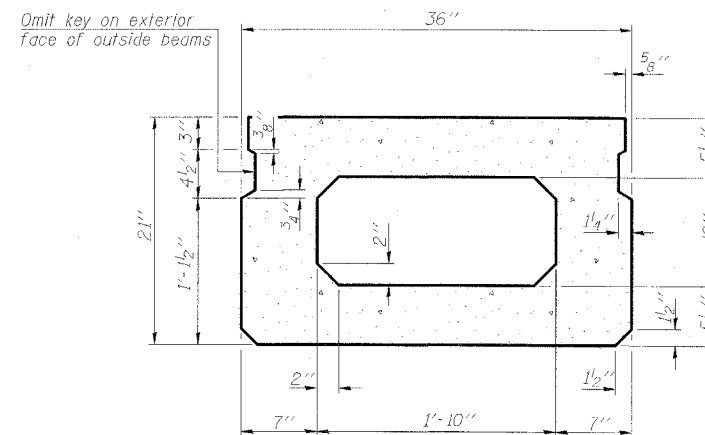


STATE OF ILLINOIS  
DEPARTMENT OF TRANSPORTATION

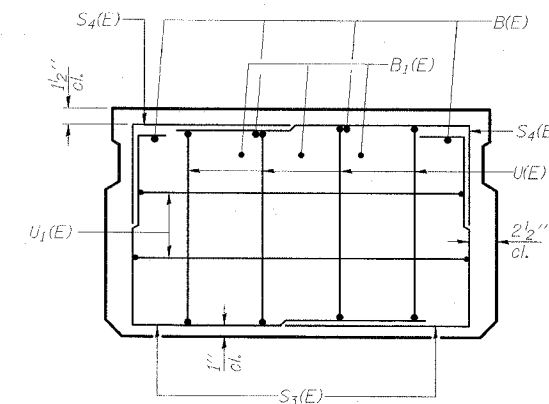
ROUTE NO.	SECTION	COUNTY	SHEET NO.	SHEET	SHEET NO. 6 17 SHEETS
FAP 782	110BR-1	WHITE	73	51	
FED. ROAD DIST. NO. 4		ILLINOIS	FED. AID PROJECT		78027



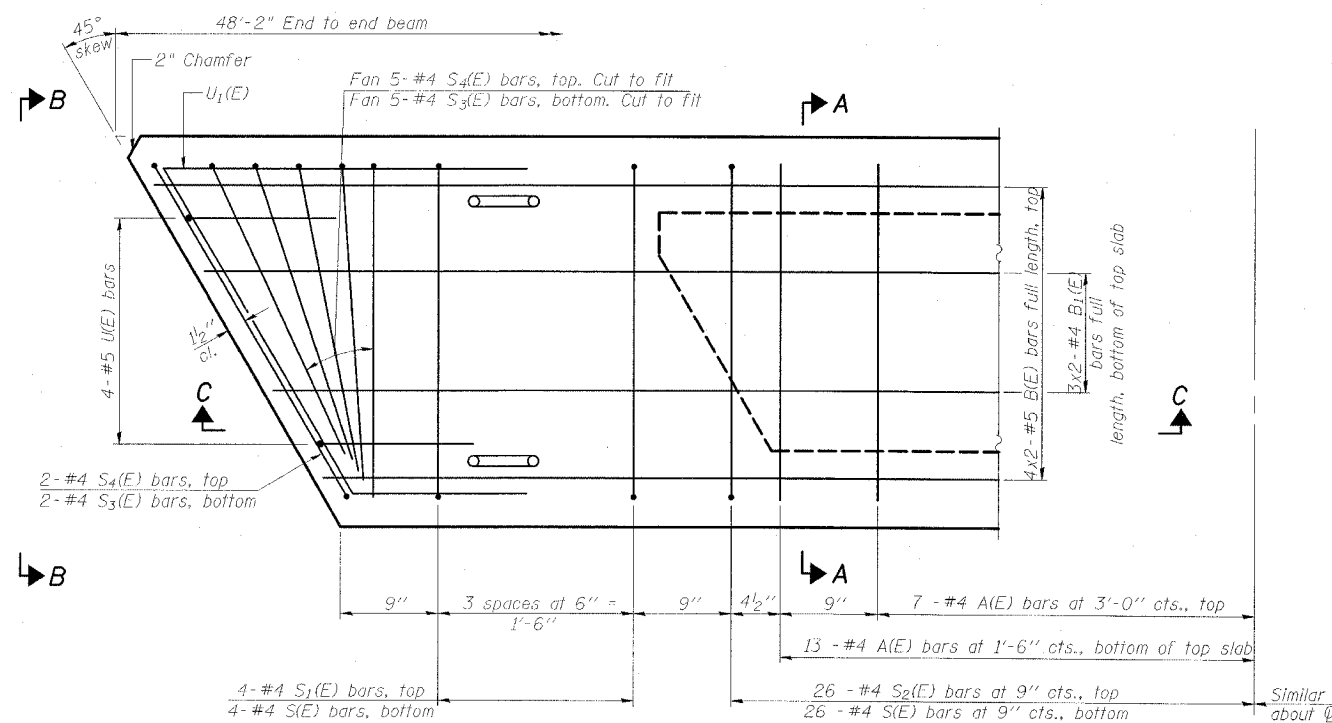
SECTION C-C



SECTION A-A  
(Showing dimensions)



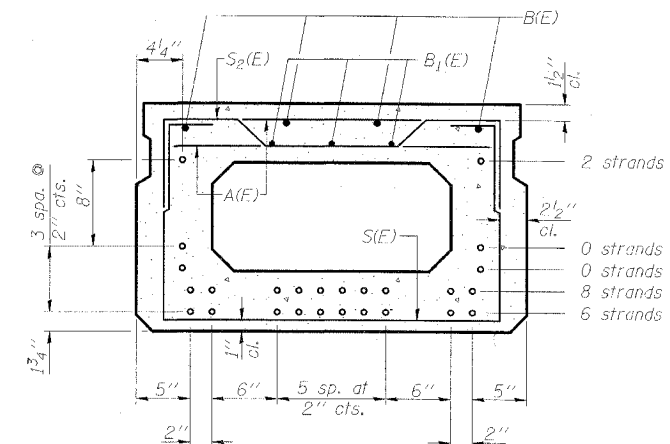
VIEW B-B



PLAN VIEW

Notes: 1. Spacing of S(E) and S<sub>2</sub>(E) bars may be adjusted up to 4" in the immediate area of the transverse tie diaphragms to miss the block outs for the transverse ties.

2. Adjust reinforcement locations to clear dowel holes at fixed ends.



SECTION A-A

(Showing reinforcement and permissible strand locations)

16 #5 Strands, each strand stressed to 30,900 lbs.

Note: Place the number of strands specified in each row symmetrically about the centerline of beam in the permissible strand locations shown.

BAR LIST  
ONE BEAM ONLY  
(For information only)

Bar	No.	Size	Length	Shape
A(E)	40	#4	2'-7"	—
B(E)	8	#5	25'-8"	—
B <sub>1</sub> (E)	6	#4	25'-8"	—
S(E)	60	#4	6'-5"	—
S <sub>1</sub> (E)	8	#4	5'-7"	—
S <sub>2</sub> (E)	52	#4	5'-10"	—
S <sub>3</sub> (E)	14	#4	5'-6"	—
S <sub>4</sub> (E)	14	#4	5'-1"	—
UK(E)	8	#5	4'-0"	—
U <sub>1</sub> (E)	4	#4	8'-6 1/2"	—

Note: See sheet 7 of 17 for additional details and Bill of Material.

**ESCA**  
CONSULTANTS, INC.

DESIGNED BY:	DAJ	09/07
DRAWN BY:	HAS	09/07
CHECKED BY:	JMS/ELH	01/08
APPROVED BY:	RDP	01/08

SUPERSTRUCTURE DETAILS  
IL 1 OVER INDIAN CREEK  
FAP ROUTE 782 - SECTION 110BR-1  
WHITE COUNTY  
STATION 85+28.00  
STRUCTURE NO. 097-0026