

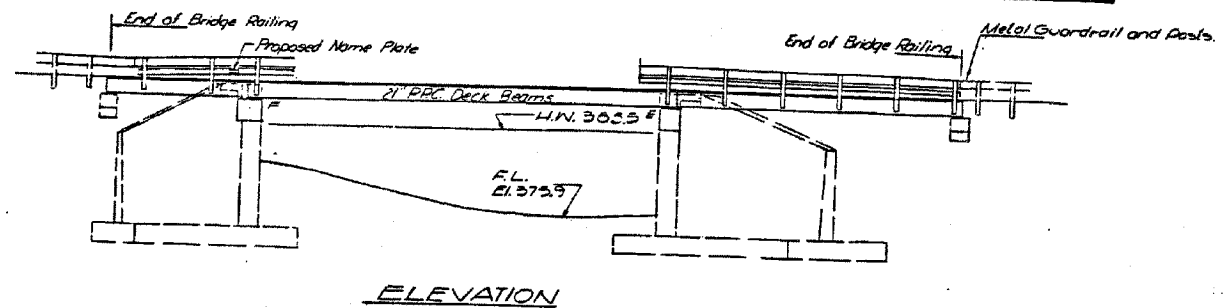


CONTRACT NO. 78027

FAP RTE	SECTION	COUNTY	TOTAL SHEETS	SHEET NO.
782	110BR-1	WHITE	73	63
STA.	TO STA.			
FED. ROAD DIST. NO.	ILLINOIS	FED. AID PROJECT AID		

SECTION	NO.	DATE	BY	CHKD.	APP'D.
110BR	WHITE	12	4		

B.M. 700 N.E. wingwall, North side of exist. bridge abut.
 U. Sta. 85+03.4 E.L. 269.83
 Exist. Structure Built 1928 on SBI Rt. 140, Sec. 110 B, T10 R31 E8
 R.C.D.C. closed abut.
 Superstructure to be removed by Contractor using
 staged construction. No Salvage.



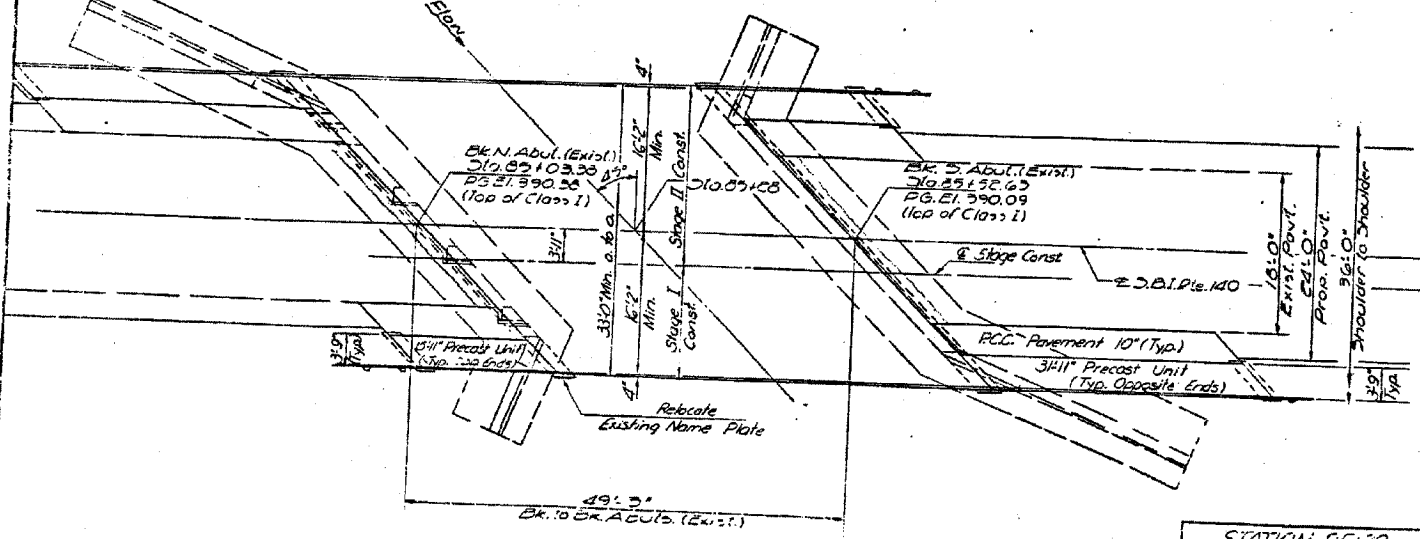
ELEVATION

WATERWAY INFORMATION

Drainage Area	8.84 Sq Miles
Character	
Present Opening	253.29 Ft.
Required Opening	253.29 Ft. - E.P.L.
Proposed Opening	253.29 Ft.
Q(50) = C951 C.F.S.	

GENERAL NOTES

All reinforcement bars shall be lapped 24 diameters unless otherwise shown.
 It shall be the responsibility of the Contractor to verify all dimensions and conditions existing in the field prior to construction and ordering of materials.
 An alternate strand pattern using Extra High Strength Prestressing strand (270 K.S.I.) is permitted.
 Expansion bolts shall consist of self drilling expansion anchors and 3/8" x 12" hooked bolts.
 Shoulder transition to wingwall shall be shaped with broken concrete. Cast incidental.
 Limits of Coal Tar Interlayer Protective Coat shall be one foot beyond end of deck beams and out to out of deck.
 Traffic shall be maintained by utilizing staged construction and temporary guardrail.



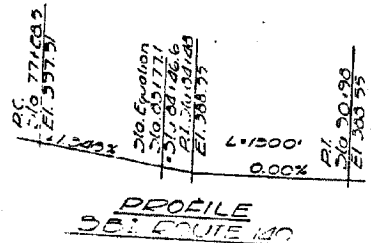
PLAN

STATION 85+28
 REBUILT 197 BY
 STATE OF ILLINOIS
 S.B.I. RT. 140 SEC. 110 BR
 LOADING HS20
 NAME PLATE
 (See SCL 213)

TOTAL BILL OF MATERIAL

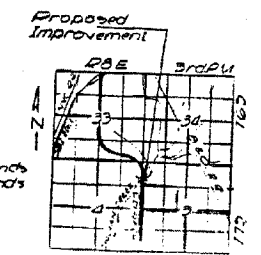
Item	Unit	Super	Sub	Qty.
Bituminous Concrete Surface Course, Class I	Ton			21
Portland Cement Concrete Pavement (10')	Sq. Yd.			41
Pavement Fabric	Sq. Yd.			41
Removal of Existing Superstructures	Each			1
Concrete Removal	Cu. Yd.			12
Expansion Bolts 3/8"	Each	38	28	106
Class I Concrete	Cu. Yd.	24	20.1	44.1
Precast Concrete Bridge Slab	Sq. Ft.			360
Precast Prestressed Concrete Deck Beams (21" Depth)	Sq. Ft.			1590
Reinforcement Bars	Pound			1990
Name Plates	Each		3840	3840
Coal Tar Interlayer Protective Coat	Sq. Yd.			184
Pavement Removal & P.C.C. Replacement, Type II (10')	Sq. Yd.			12
Steel Railing, Type 3	Lin. Ft.			176
Neoprene Expansion Joint (2')	Lin. Ft.			47
Temporary Guardrail	Lin. Ft.			49

DESIGNED	DAJ	09/07
CHECKED	HAS	09/07
DRAWN	ELH	01/08
CHECKED	RDP	01/08



DESIGN STRESSED

FIELD UNITS	PRECAST UNITS
f _c = 1000 psi - Sub.	f _c = 3000 psi
f _s = 60,000 psi - Deck	f _s = 4000 psi
f _s = 75,000 psi - Railing	f _s = 240,000 psi - 7# Strands
n = 10	f _s = 173,600 psi - 7# Strands
	PRECAST UNITS
	f _c = 4000 psi
	f _s = 4000 psi



GENERAL PLAN AND ELEVATION
 SBI ROUTE 140 OVER
 INDIAN CREEK
 SBI ROUTE 140

ESCA
 CONSULTANTS, INC.

DESIGNED BY:	DAJ	09/07
DRAWN BY:	HAS	09/07
CHECKED BY:	ELH	01/08
APPROVED BY:	RDP	01/08

EXISTING STRUCTURE PLANS
 FAP RTE 782 (IL 1)
 SECTION 110BR-1
 WHITE COUNTY

FOR INFORMATION ONLY