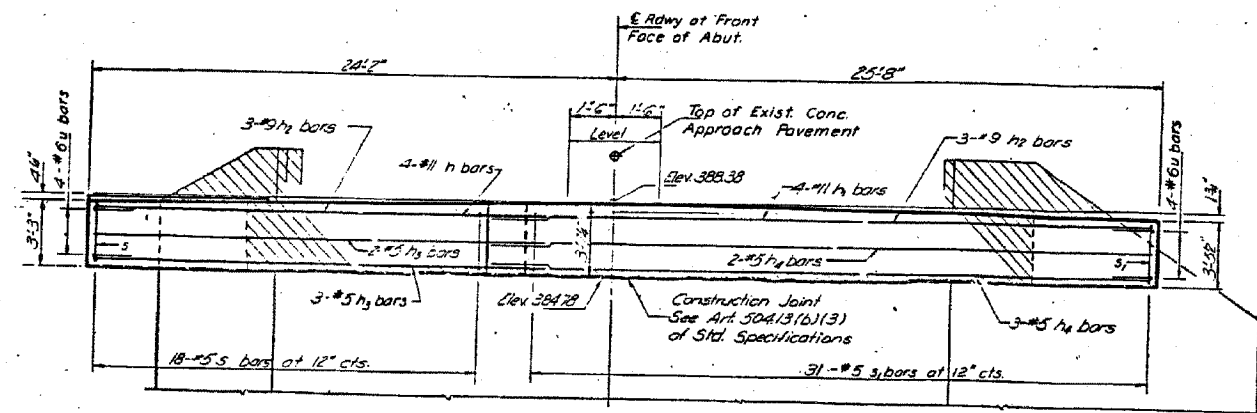




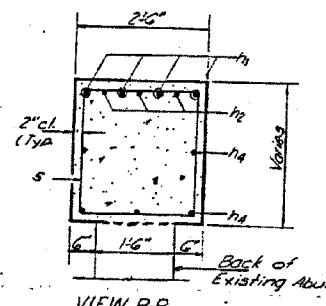
CONTRACT NO. 78027			
FAP RTE	SECTION	COUNTY	TOTAL SHEET NO.
782	110BR-1	WHITE	73 65
STA.		TO STA.	
FED. ROAD DIST. NO.		ILLINOIS	FED. AID PROJECT AID

DATE	NO.	BY	REVISION
12/11	1	WHITE	12
12/11	2	WHITE	11

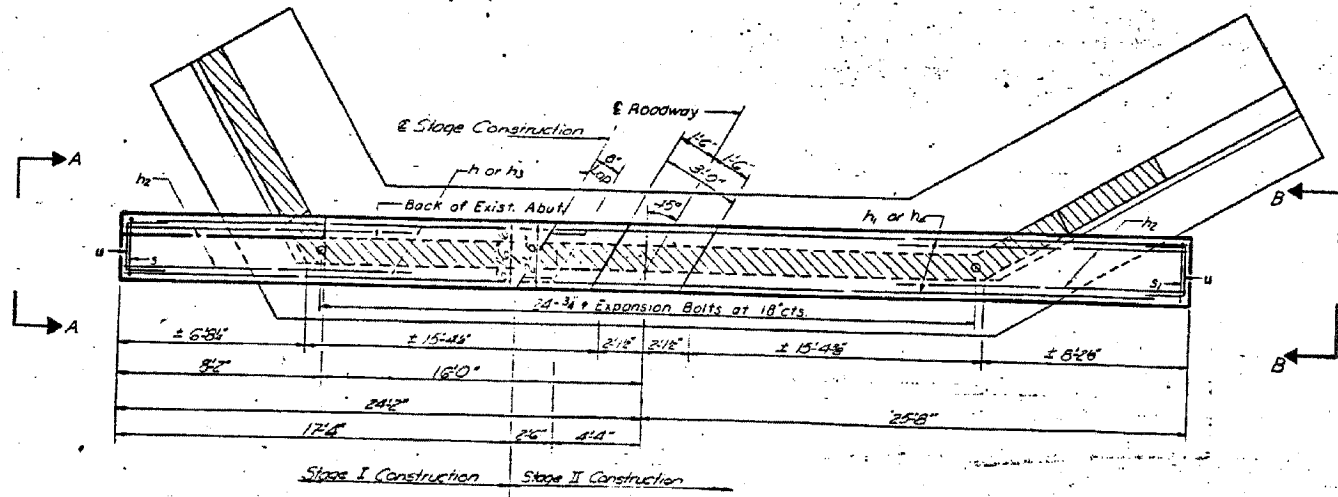
SHEET NO. 3
9 SHEETS



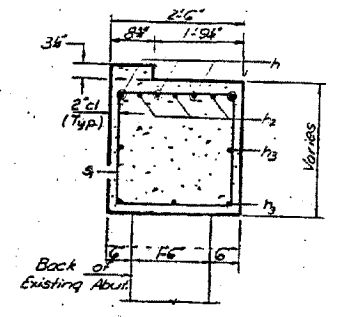
ELEVATION



VIEW B-B



PLAN



VIEW A-A

NO. ABUTEMENTS

BILL OF MATERIAL

Bar	No.	Size	Length	Shape
h	2	#9	17.76'	---
h1	1	#9	30.00'	---
h2	6	#9	11.00'	---
h3	5	#5	11.00'	---
h4	5	#5	30.00'	---
s	18	#5	10.00'	□
s1	31	#5	11.30'	□
u	8	#6	10.00'	□

Class X Concrete	Cu. Yd.	16.1
Reinforcement Bars	Wt.	1810
Expansion Bolts	Each	24
Concrete Removal	Cu. Yd.	6

NORTH ABUTMENT

Notes:
 Hatched area indicates Concrete Removal Reinforcement extending into removed area shall be cleaned and incorporated into the new construction.
 Expansion Bolts shall be anchored in sound concrete.
 All edges shall have standard 3/4 chamfers

DESIGNED: Kevin C. Adams, PE
 CHECKED: Chris Tran, PE
 EXAMINED: [Signature]
 DATED: 09/07

ESCA
 CONSULTANTS, INC.

DESIGNED BY:	DAJ	09/07
DRAWN BY:	HAS	09/07
CHECKED BY:	ELH	01/08
APPROVED BY:	RDP	01/08

FOR INFORMATION ONLY

EXISTING STRUCTURE PLANS
 FAP RTE 782 (IL 1)
 SECTION 110BR-1
 WHITE COUNTY