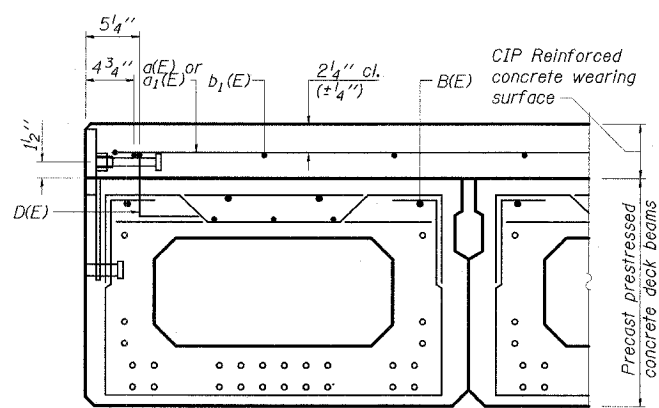


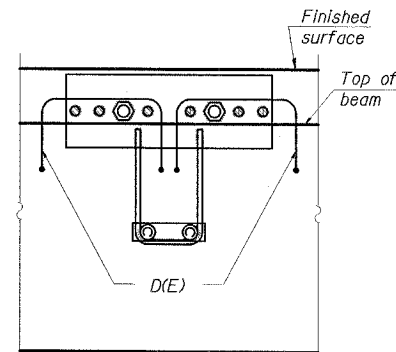
STATE OF ILLINOIS  
DEPARTMENT OF TRANSPORTATION

ROUTE NO.	SECTION	COUNTY	DATE	SHEET	SHEET NO.
FAS 899	8BR-2	SALINE	75	45	10
78028					18 SHEETS

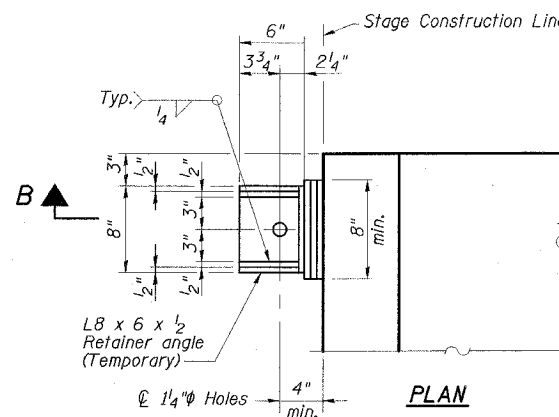


**FASCIA BEAM CROSS SECTION**

See Typical Section on Dwg. 6 of 18 for strand pattern, dimensions and bar call outs.

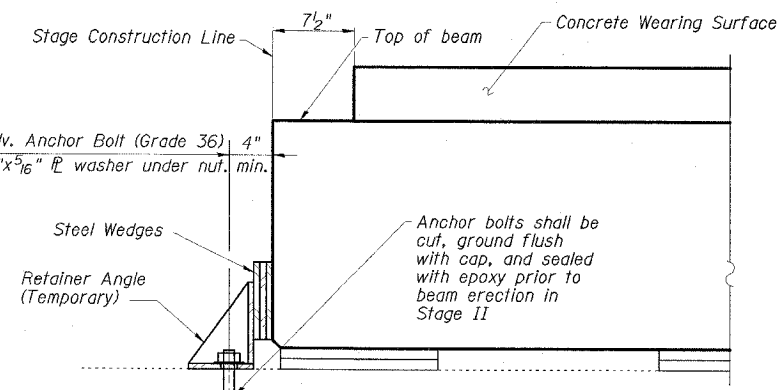


**SECTION A-A**



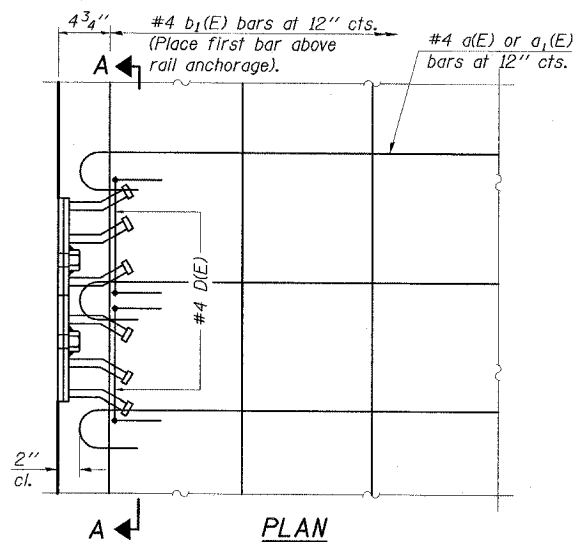
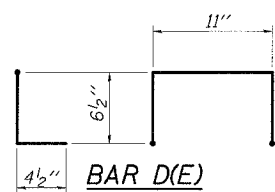
**PLAN**

**BEAM RETAINER DETAILS AT STAGE CONSTRUCTION LINE**  
(2 Required)



**SECTION B-B**

Cost of Retainer Angles, Anchor Bolts & accessories is included with Precast Prestressed Concrete Deck Beams. See Dwg. 17 of 18 for Anchor Bolt notes.



**PLAN**

**CONCRETE OVERLAY MODIFICATIONS FOR RAIL ANCHORAGE**  
(Bridge shown, Approach similar)

**NOTES**

After beams have been erected, holes shall be drilled into substructure and dowel rods placed. Dowel holes shall be filled with non-shrink grout to top of beam and allowed to cure min. 24 hrs. prior to grouting the shear keys.

Concrete wearing surface to be poured after grouting the shear keys.

Dowel rods drilled in cap are included in the cost of Precast Prestressed Concrete Deck Beams (21" Depth) or Precast Concrete Bridge Slabs.

The rail anchorage shall be cast with the beam or slab and the wearing surface shall be cast in the field. Formwork necessary for the wearing surface may be secured utilizing the bottom rail anchorage inserts and/or additional inserts cast into the beam or slab. Drilling into the beam or slab will not be permitted.

**SUPERSTRUCTURE AND APPROACH DETAILS**  
**OLD IL 13 OVER BANKSTON FORK**  
**FAS ROUTE 899 - SECTION 8BR-2**  
**SALINE COUNTY**  
**STATION 802+60.00**  
**STRUCTURE NO. 083-0036**

**ESCA**  
CONSULTANTS, INC.

DESIGNED BY:	JMS	10/07
DRAWN BY:	CJ/HAS	10/07
CHECKED BY:	DAJ/ELH	01/08
APPROVED BY:	RDP	01/08