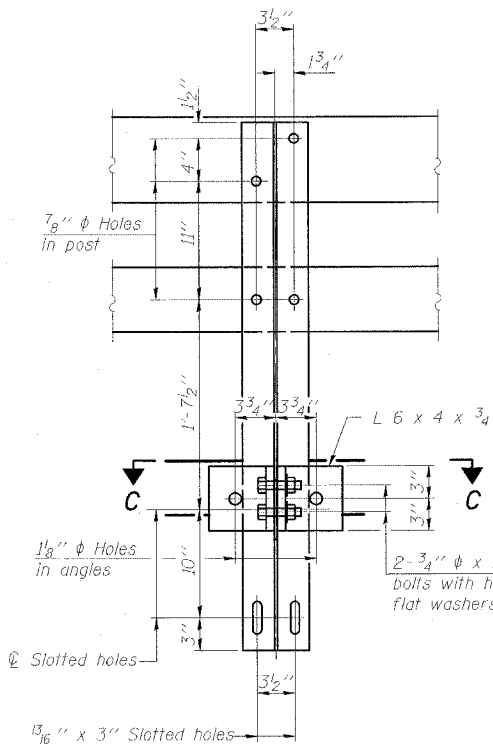
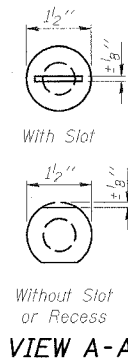
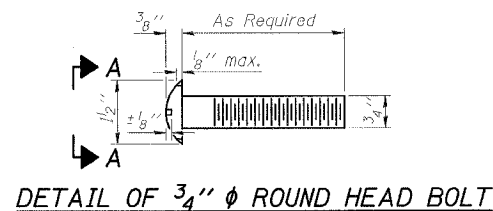


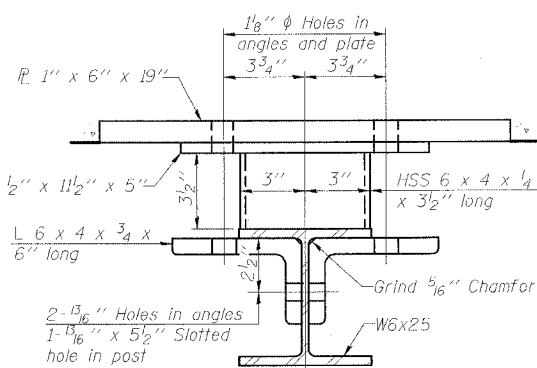
STATE OF ILLINOIS  
DEPARTMENT OF TRANSPORTATION

ROUTE NO.	SECTION	COUNTY	DATE	SHEET	SHEET NO. 11 18 SHEETS
FAS 899	8BR-2	SALINE	75	45	
FED. ROAD DIST. NO. 4	BUILDING	FED. AID PROJECT			

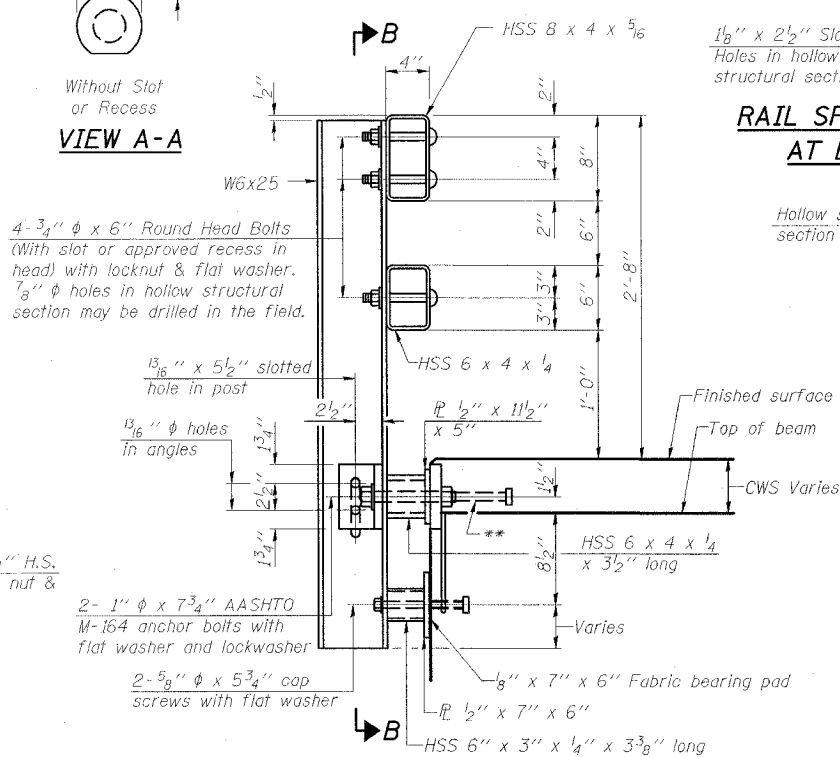
78028



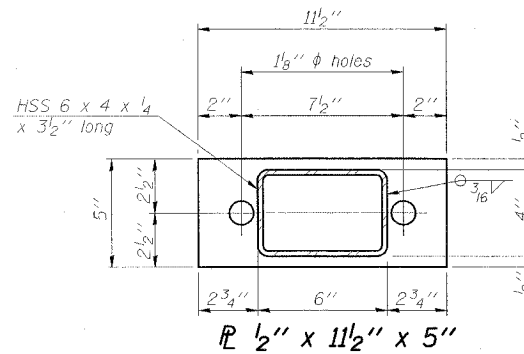
SECTION B-B



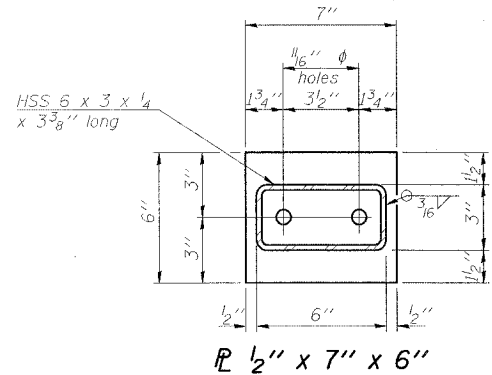
SECTION C-C



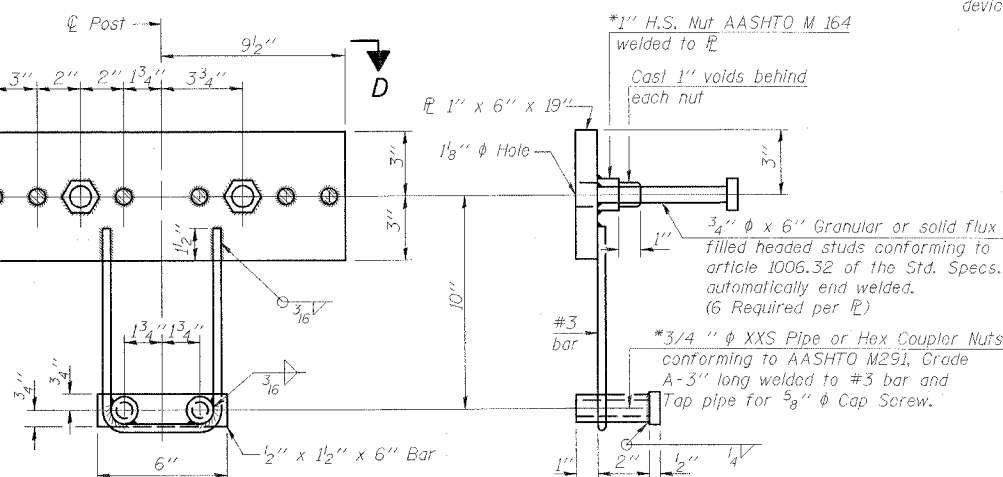
SECTION AT RAIL POST



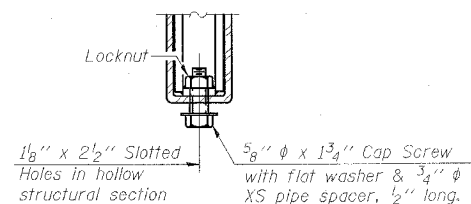
PLAN-BOTT. SPLICE AT TYPICAL



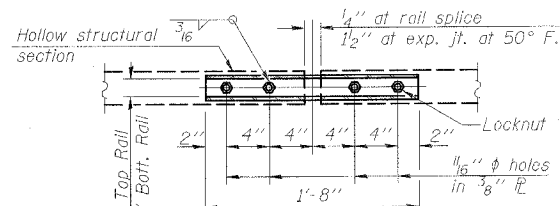
VIEW D-D



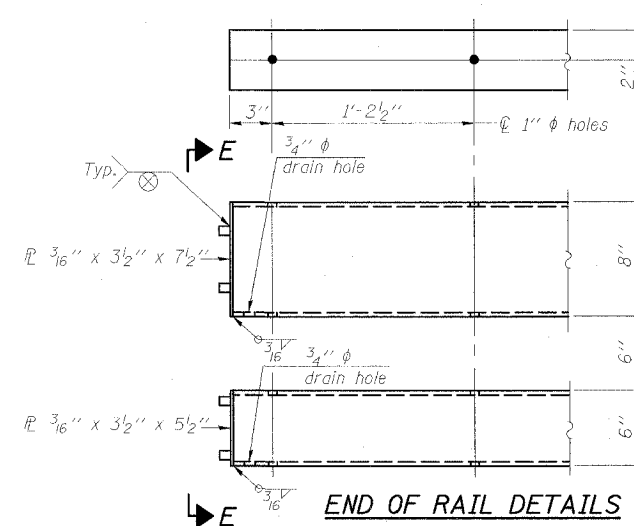
ANCHOR DEVICE



RAIL SPLICE CONNECTION AT EXPANSION JT.



SECTION AT RAIL SPLICE



END OF RAIL DETAILS

Notes:  
All field drilled holes shall be coated with an approved zinc rich paint before erection.  
For multi-span bridges, sufficient 1/4" x 6" x 1'-2" galvanized steel shims shall be provided to align rail between adjacent spans. Cost included with Steel Railing, Type SM.  
Steel rail elements shall be galvanized according to Article 509.05 of the Standard Specifications.  
\*\*The studs of the anchor devices shall be placed below the top reinforcement bars and the outermost longitudinal reinforcement bar shall be placed directly above the studs of the rail post anchor device.

BILL OF MATERIAL

Item	Unit	Quantity
Steel Railing, Type SM	Foot	283

STEEL RAILING, TYPE SM  
OLD IL 13 OVER BANKSTON FORK  
FAS ROUTE 899 - SECTION 8BR-2  
SALINE COUNTY  
STATION 802+60.00  
STRUCTURE NO. 083-0036

**ESCA**  
CONSULTANTS, INC.

DESIGNED BY:	JMS	10/07
DRAWN BY:	CJ/HAS	10/07
CHECKED BY:	DAJ/ELH	01/08
APPROVED BY:	RDP	01/08

R-34CWS

9-3-07

(6'-3" Maximum Post Spacing) (5" minimum to 7 1/8" maximum CWS thickness)

\*Threaded areas shall be plugged or blocked off during casting of beam. Galvanized after fabrication.