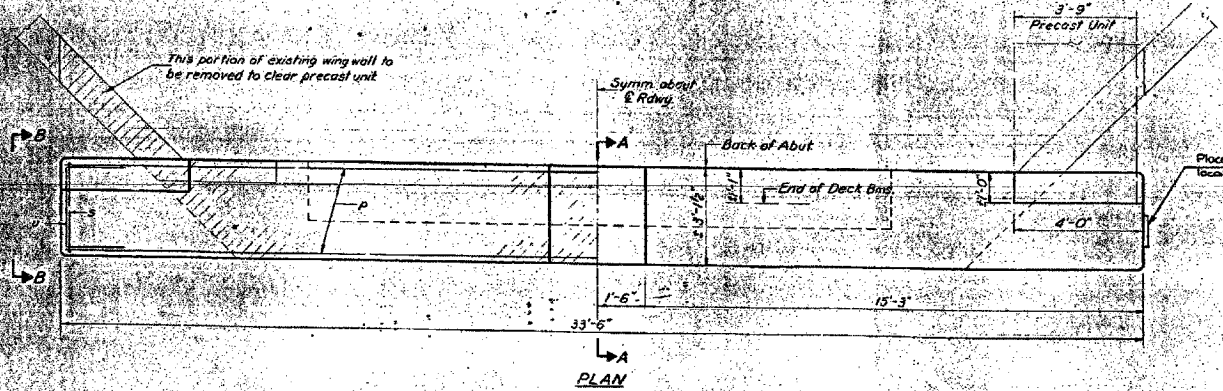
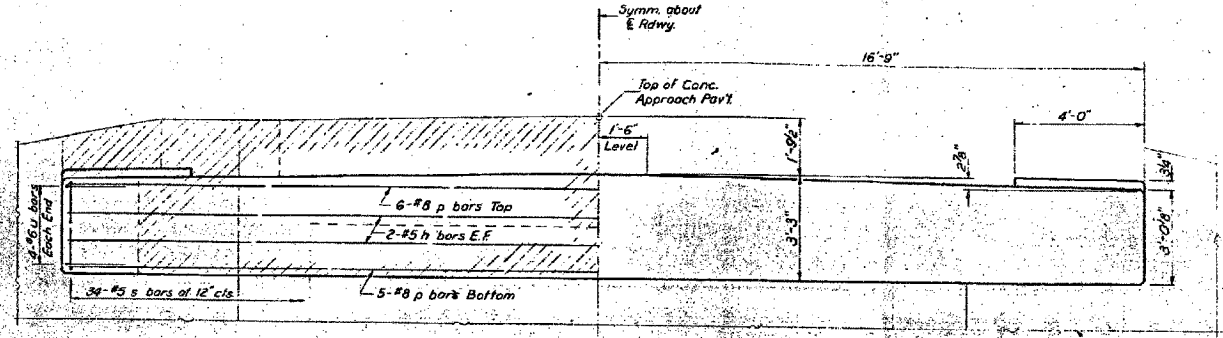




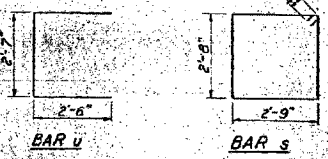
CONTRACT NO. 78028				
FAS RTE	SECTION	COUNTY	TOTAL SHEETS	SHEET NO.
899	8BR-2	SALINE	75	58
STA.		TO STA.		
FED. ROAD DIST. NO.	ILLINOIS	FED. AID PROJECT		

STATE OF ILLINOIS
DEPARTMENT OF PUBLIC WORKS & BUILDINGS
DIVISION OF HIGHWAYS

ROUTE NO.	SECTION	COUNTY	TOTAL SHEETS	SHEET NO.
1-143	8BR	SALINE	80	55
SHEET NO. 5 6 SHEETS				



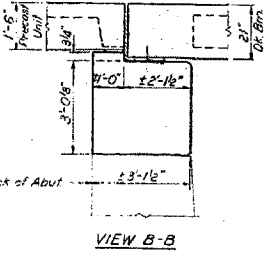
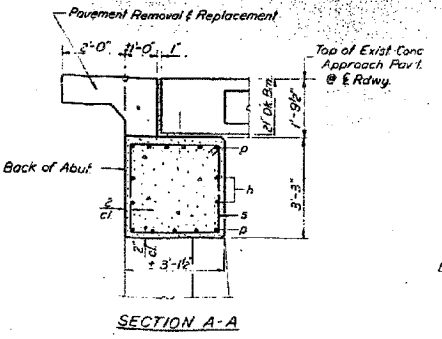
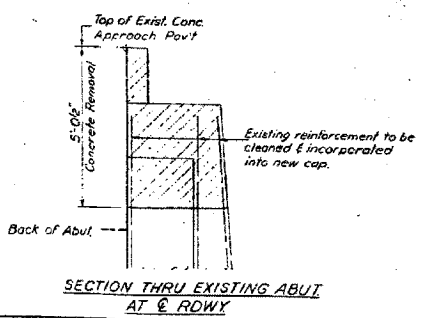
NOTES:
Hatched Areas indicate Concrete Removal.
All edges shall have standard 3/8" chamfers except as noted.



**TWO ABUTMENTS
BILL OF MATERIAL**

Bar	No.	Size	Length	Shape
h	8	#5	33'-9"	—
p	22	#8	33'-9"	—
s	68	#5	11'-7"	□
u	16	#6	7'-7"	□
Class X Concrete		Cu Yds.	24.5	
Reinforcement Bars		Lbs.	3230	
Concrete Removal		Cu Yds.	18	

DESIGNED	Jack Armstrong	EXAMINED	Oct 24 1968
CHECKED	James Price	APPROVED	
DRAWN	J.L. Armstrong		
CHECKED	JP		



**ABUTMENTS
S. & L. RT 13 SEC. 8BR
SALINE COUNTY
STA. 802+60**

ESCA
CONSULTANTS, INC.

DESIGNED BY:	JMS	12/07
DRAWN BY:	HAS	12/07
CHECKED BY:	MTD	01/08
APPROVED BY:	RDP	01/08

EXISTING STRUCTURE PLANS
FAS RTE 899 (OLD IL 13)
SECTION 8BR-2
SALINE COUNTY

FOR INFORMATION ONLY