

STATE OF ILLINOIS

DEPARTMENT OF TRANSPORTATION

DIVISION OF HIGHWAYS

PROPOSED HIGHWAY PLANS

FAP ROUTE 881 (US 45)
SECTION: D9 SAFETY FY08-1
PROJECT: ACHSIP-0881(015)

SALINE, WILLIAMSON & JOHNSON COUNTIES
C-99-018-08

F.A.P. RTE.	SECTION	COUNTY	TOTAL SHEETS	SHEET NO.
881	D9 SAFETY FY08-1	*	64	1
FED. ROAD DIST. NO.	ILLINOIS	CONTRACT NO. 78038		
* SALINE, WILLIAMSON & JOHNSON				

FOR INDEX OF SHEETS, SEE SHEET NO. 2
FOR SUMMARY OF QUANTITIES, SEE SHEET NO. 3-4

STATION EQUATIONS

STA 338+72.3 @ BK = STA 338+77.5 @ AH
STA 403+14.2 @ BK = STA 403+11.8 @ AH
STA 422+00.0 @ BK = STA 422+03.4 @ AH
STA 521+27.0 @ BK = STA 575+57.0 @ AH
STA 613+66.6 @ BK = STA 613+62.4 @ AH
STA 635+00.0 @ BK = STA 635+20.2 @ AH
STA 701+52.3 @ BK = STA 701+00.0 @ AH
STA 758+98.4 @ BK = STA 758+97.7 @ AH
STA 838+00.0 @ BK = STA 838+28.2 @ AH
STA 875+23.7 @ BK = STA 875+00.0 @ AH

TRAFFIC DATA

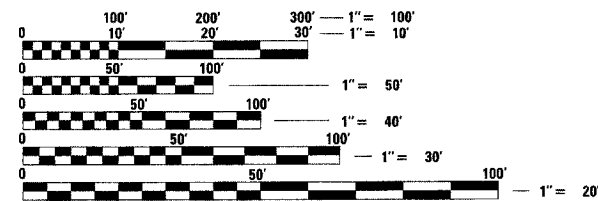
HARRISBURG TO CARRIER MILLS
2005 ADT = 6,800 WITH 8.8% TRUCKS
2015 ADT = 9,708 WITH 44% TRUCKS

CARRIER MILLS TO STONEFORT
2005 ADT = 2,050 WITH 12% TRUCKS
2015 ADT = 9,708 WITH 44% TRUCKS

STONEFORT TO NEW BURNSIDE
2005 ADT = 1,350 WITH 14% TRUCKS
2005 ADT = 9,708 WITH 44% TRUCKS

TOWNSHIPS

HARRISBURG
CARRIER MILLS
STONEFORT
BURNSIDE

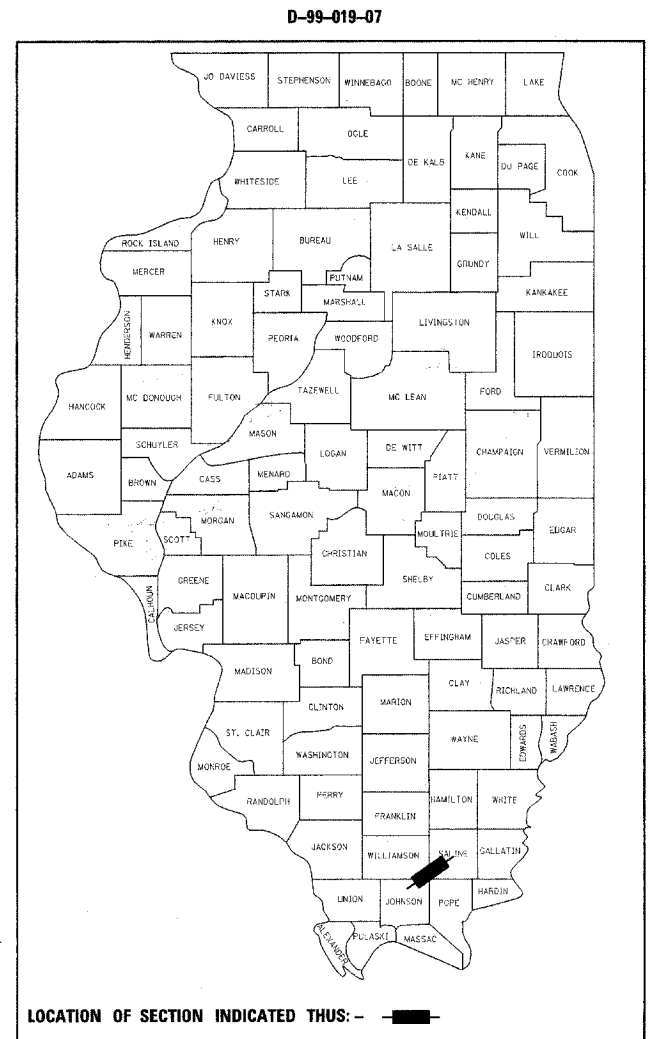
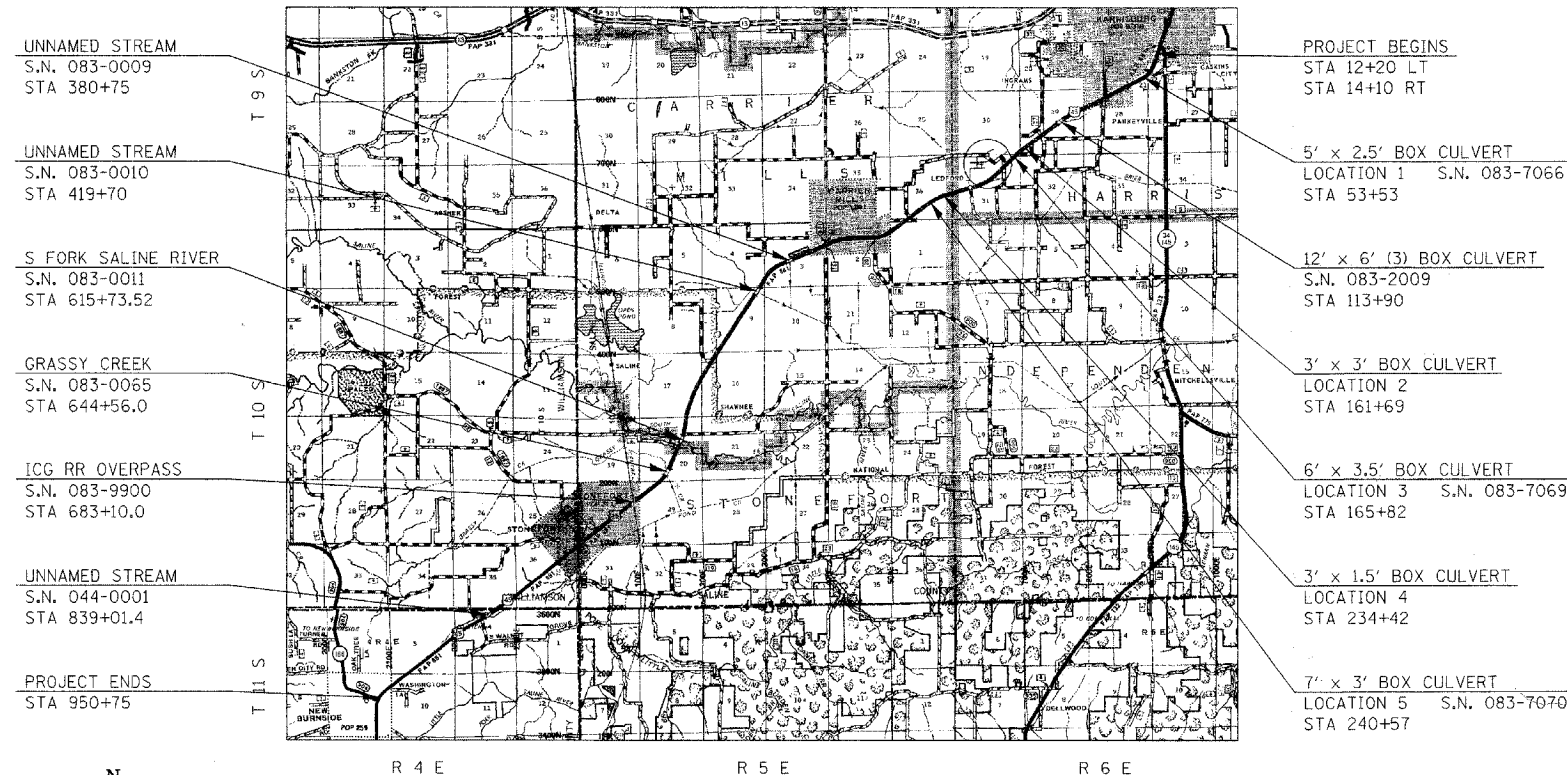


FULL SIZE PLANS HAVE BEEN PREPARED USING STANDARD ENGINEERING SCALES. REDUCED SIZED PLANS WILL NOT CONFORM TO STANDARD SCALES. IN MAKING MEASUREMENTS ON REDUCED PLANS, THE ABOVE SCALES MAY BE USED.

J.U.L.I.E.
JOINT UTILITY LOCATION INFORMATION FOR EXCAVATION
1-800-892-0123

PROJECT ENGINEER: CHARLES STEIN
DESIGNER: HOWARD THOMAS

CONTRACT NO. 78038



LOCATION OF SECTION INDICATED THUS: — ■ —

NOTE: WHEREVER IN THESE PLANS REFERENCE IS MADE TO "VARIOUS COUNTIES" IT SHALL MEAN "SALINE, WILLIAMSON & JOHNSON COUNTIES"

STATE OF ILLINOIS
DEPARTMENT OF TRANSPORTATION
DIVISION OF HIGHWAYS

SUBMITTED March 14, 20 08
Mar. C. Lami
DEPUTY DIRECTOR OF HIGHWAYS, REGION 5 ENGINEER

May 9, 20 08
Eric E. Nanni
ENGINEER OF DESIGN AND ENVIRONMENT

May 9, 20 08
Christine M. Reed
DIRECTOR OF HIGHWAYS, CHIEF ENGINEER

PRINTED BY THE AUTHORITY
OF THE STATE OF ILLINOIS

GROSS LENGTH OF PROJECT = 88,451 FT = 16.75 MILES (LEFT)
88,261 FT = 16.72 MILES (RIGHT)

NET LENGTH OF PROJECT = 76,952 FT = 14.57 MILES (LEFT)
78,248 FT = 14.82 MILES (RIGHT)

