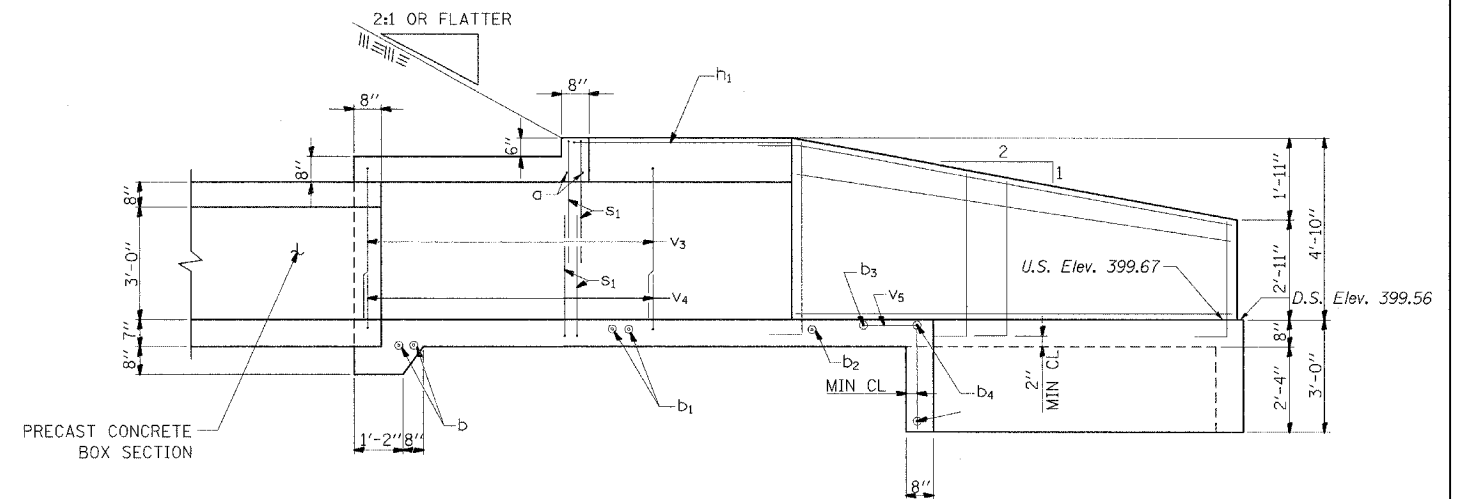
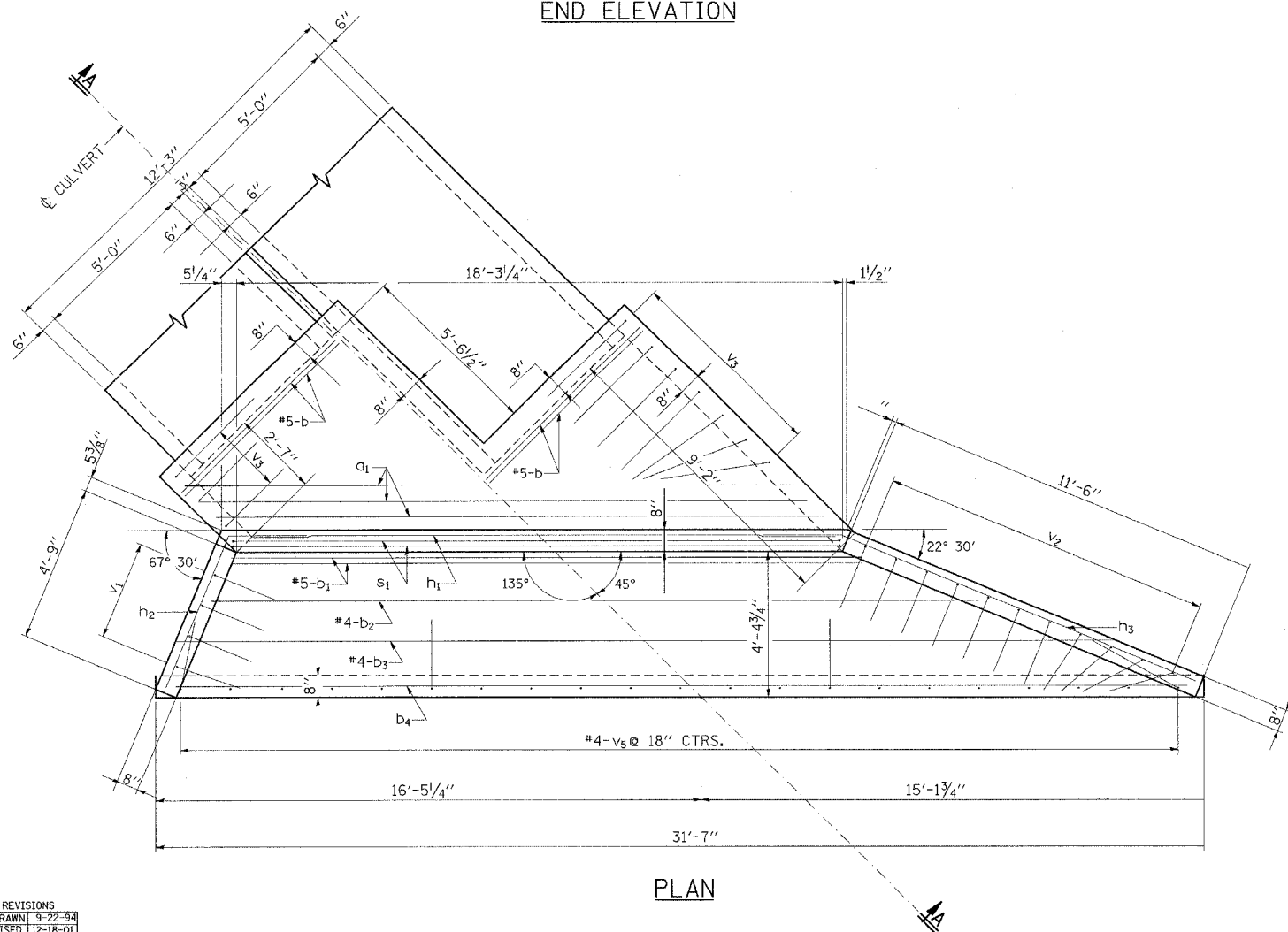


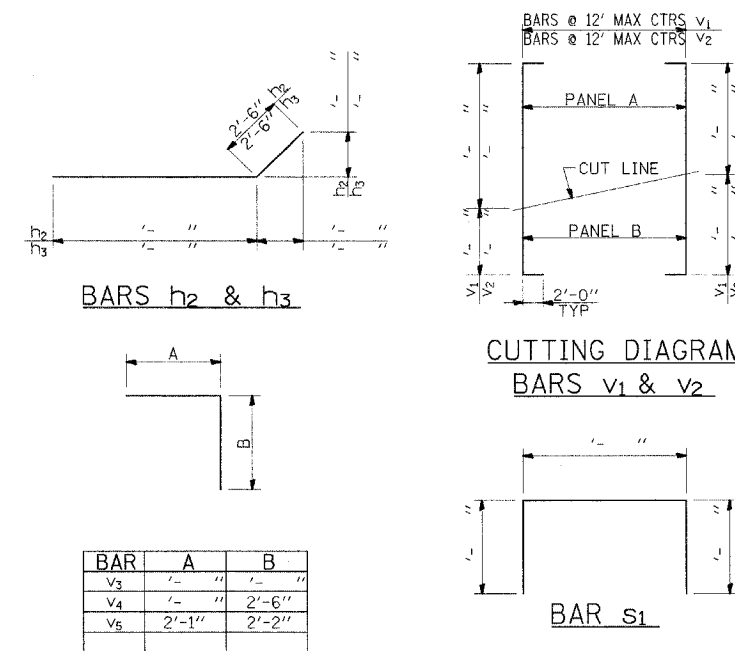
END ELEVATION



SECTION A-A



PLAN



CUTTING DIAGRAM
BARS v1 & v2

BILL OF MATERIAL

BAR SIZE	NO.	LENGTH	SHAPE
a	#5	2	'-''
b	#5	2	'-''
b1	#5	2	'-''
b2	#4		'-''
b3	#4		'-''
b4			'-''
b5			'-''
h1	#5	2	'-''
h2	#5	2	'-''
h3	#5	2	'-''
h4	#4		'-''
h5	#4		'-''
v1	#5		'-''
v2	#5		'-''
v3	#5		'-''
v4	#5		'-''
v5	#4		'-''
s1	#4	4	'-''
CONC BOX CULVERTS CU YDS			14.8
REINF BARS LBS			1050

NOTES:

TABLE FOR ONE (1) HEADWALL ONLY.
BAR DIMENSIONS ARE OUT TO OUT.

NOTES:

EXPOSED EDGES SHALL BE BEVELED 3/4".
REINFORCEMENT BARS SHALL CONFORM TO THE REQUIREMENTS OF AASHTO M-31, M-42, M-53, GRADE 60.

CAST-IN-PLACE END SECTION
DOUBLE 5'X3' BOX @ 45° SKEW
AASHTO M-273

REVISIONS
REDRAWN 9-22-94
REVISED 12-18-01
REVISED 3-27-08

FILE NAME =
std_9-61

USER NAME = thomashf	DESIGNED -	REVISED -
PLOT SCALE = 50.0000' / IN.	DRAWN -	REVISED -
PLOT DATE = 4/25/2008	CHECKED -	REVISED -
	DATE -	REVISED -

STATE OF ILLINOIS
DEPARTMENT OF TRANSPORTATION

DETAIL: CAST-IN-PLACE APRON END SECTION STATION 240+57

SCALE: NONE SHEET NO. 1 OF 1 SHEETS STA. TO STA.

F.A.P. RTE.	SECTION	COUNTY	TOTAL SHEETS	SHEET NO.
881	D9 SAFETY FY08-1	VARIOUS	64	29
FED. ROAD DIST. NO. [ILLINOIS] FED. AID PROJECT			CONTRACT NO. 78038	