

F.A.P. RTE.	SECTION	COUNTY	TOTAL SHEETS	SHEET NO.
331	*	WILLIAMSON	29	1

* (1-2)RS-3, (1-3)RS-2

STATE OF ILLINOIS
 DEPARTMENT OF TRANSPORTATION
 DIVISION OF HIGHWAYS

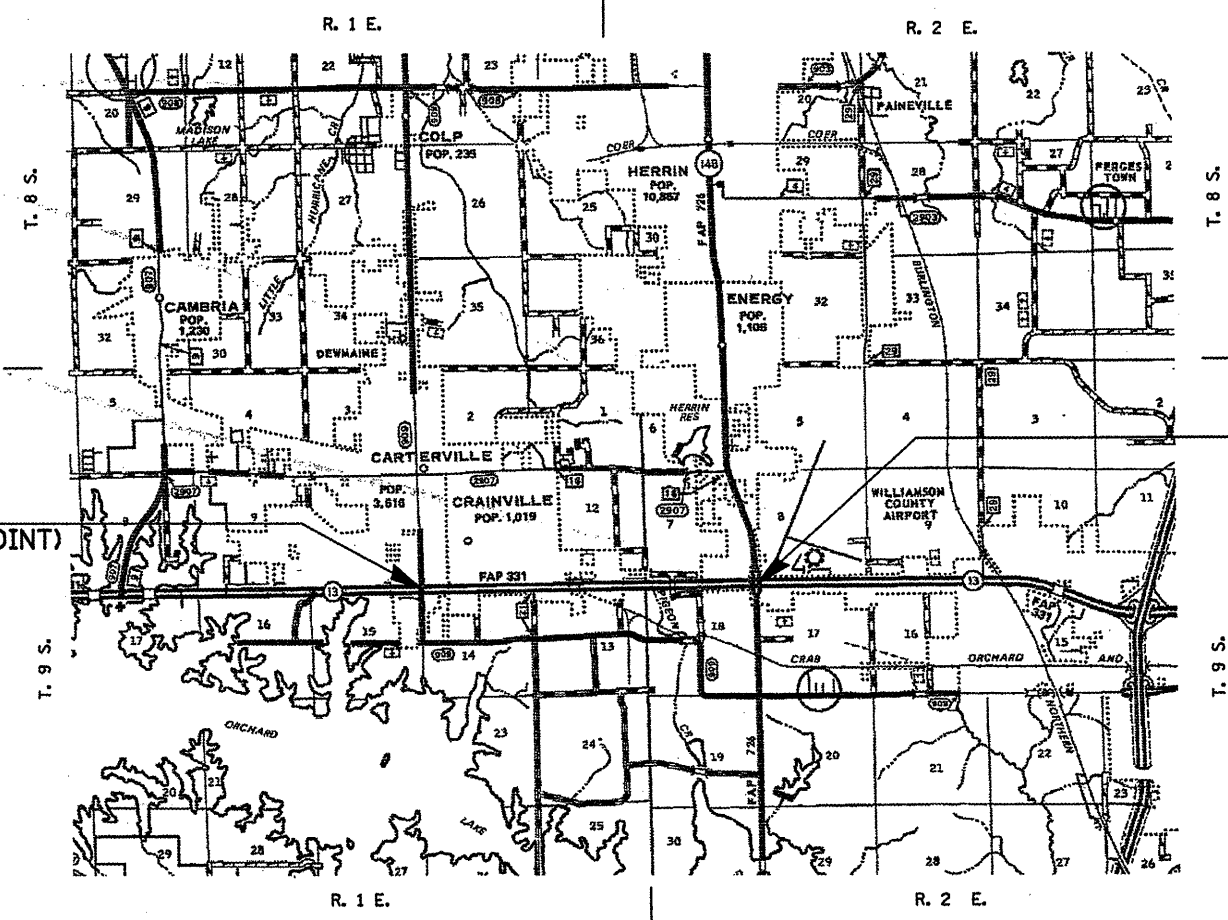
**PROPOSED
 HIGHWAY PLANS**

FAP ROUTE 331 (IL 13)
 SECTION (1-2)RS-3; (1-3)RS-2
 PROJECT : ACNHF-0331 (045)
 WILLIAMSON COUNTY
 C-99-019-08

FOR INDEX OF SHEETS, SEE SHEET NO. 3

ADT (2005) 13,750
 PV = 13075
 SU = 275
 MU = 400
 TRUCK = 5%

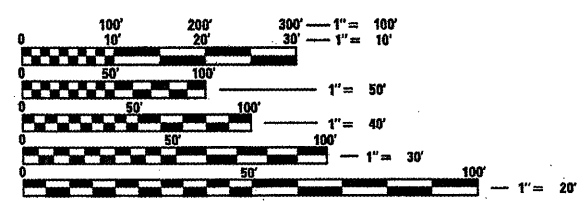
D-99-016-08



TOWNSHIPS: WEST MARION & CARTERVILLE

PROP. PROJECT BEGINS -
 STA. 467+57 EBL (BUTT JOINT)

PROP. PROJECT ENDS -
 STA. 627+77 EBL



FULL SIZE PLANS HAVE BEEN PREPARED USING STANDARD ENGINEERING SCALES. REDUCED SIZED PLANS WILL NOT CONFORM TO STANDARD SCALES. IN MAKING MEASUREMENTS ON REDUCED PLANS, THE ABOVE SCALES MAY BE USED.

J.U.L.I.E.
 JOINT UTILITY LOCATION INFORMATION FOR EXCAVATION
 1-800-892-0123

LENGTH OF PROJECT: 16,015.67 FT. = 3.033 MILES

STATE OF ILLINOIS
 DEPARTMENT OF TRANSPORTATION
 DIVISION OF HIGHWAYS

SUBMITTED March 14, 2008
Mar C. Lamin
 DEPUTY DIRECTOR OF HIGHWAYS, REGION ENGINEER

May 9, 2008
Eric E. Harn
 ENGINEER OF DESIGN AND ENVIRONMENT

May 9, 2008
Christine M. Reed
 DIRECTOR OF HIGHWAYS, CHIEF ENGINEER

**PRINTED BY THE AUTHORITY
 OF THE STATE OF ILLINOIS**

CONTRACT NO. 78039

PROJECT ENGINEER: CHARLES STEIN (618) 351-5210
 ENG. TECHNICIAN: KATHI MCCORD (618) 351-5216

F.A.P. RTE.	SECTION	COUNTY	TOTAL SHEETS	SHEET NO.
331	*	WILLIAMSON	29	2
STA. _____ TO STA. _____				
FED. ROAD DIST. NO. _____ ILLINOIS FED. AID PROJECT				
* (1-2)RS-3, (1-3)RS-2				

Prepared By: *Chris Blankenship*
DISTRICT STUDIES & PLANS ENGINEER

Examined By: *Tommy L. G...*
DISTRICT LAND ACQUISITION ENGINEER

Examined By: *Carrie Nelson*
DISTRICT PROGRAM DEVELOPMENT ENGINEER

Examined By: *Kevin Gannon*
DISTRICT OPERATIONS ENGINEER

Examined By: *Joseph L...*
DISTRICT CONSTRUCTION ENGINEER

Examined By: *Bruce W. Peck*
DISTRICT MATERIALS ENGINEER

Examined By: *John Smother*
DISTRICT PROJECT IMPLEMENTATION ENGINEER

Examined By: *Tommy L. G...*
ASSISTANT REGIONAL ENGINEER

Approved By: *Mary C. James*
DEPUTY DIRECTOR OF HIGHWAYS, REGION 5 ENGINEER

March 11 20 08
DATE

SIGNATURE SHEET

PLAT SCALE = 1"=100' / 31.5'
USER NAME = 1000000000

F.A.P. RTE.	SECTION	COUNTY	TOTAL SHEETS	SHEET NO.
331	*	WILLIAMSON	29	3
STA.		TO STA.		
FED. ROAD DIST. NO. ILLINOIS FED. AID PROJECT				
* (1-2)RS-3,(1-3)RS-2				

INDEX OF SHEETS

SHEET NO.	DESCRIPTION
1	COVER SHEET
2	SIGNATURE SHEET
3	INDEX OF SHEETS AND STANDARDS AND MIXTURE DESIGN
4	GENERAL NOTES
5 - 6	SUMMARY OF QUANTITIES
7 - 8	TYPICAL SECTIONS
9 - 10	SCHEDULES: RESURFACING MAINLINE AND RESURFACING SIDE ROADS
11	SCHEDULE: PAVEMENT MARKING
12	LOCATION MAP
13 - 22	PLAN SHEETS - FAP 331 (IL 13) FROM DIVISION ST. TO IL. 148
23	SIDEROAD AND CROSSOVER DETAILS
24	BUTT JOINT DETAILS FOR BEGINNING AND END OF PROJECT
25 - 28	STAGE CONSTRUCTION PLANS FOR PCC PAVEMENT CONSTRUCTION
29	DETAILS: DETECTOR LOOPS; TEMPORARY HOT-MIX ASPHALT TRANSITIONS; UNEVEN PAVEMENT SIGN DETAILS

STANDARDS:

000001-05	701421-01
420001-07	701422-01
420101-04	701426-02
420701-02	701701-05
442001-04 (CLASS A PATCHES)	701901
442101-07 (CLASS B PATCHES)	780001-01
701101-01	781001-02

MIXTURE REQUIREMENTS

Location(s):	Hot-Mix Asphalt Surface Course
Mixture Use(s)	Polymerized Hot-Mix Asphalt Surface Course, Mix "D", N105
AC/PG	SBS PG76-22
RAP% (Max):	0
Design Air Voids:	4.0%, 105 Gyration Design
Mixture Composition (Gradation Mixture)	IL-9.5 mm or IL 12.5 mm
Friction Aggregate:	D Surface

Location(s):	Leveling Binder
Mixture Use(s)	Polymerized Leveling Binder (Machine Method) N105
AC/PG	SBS PG76-22
RAP% (Max):	0
Design Air Voids:	4.0%, 105 Gyration Design
Mixture Composition (Gradation Mixture)	IL-19.0 mm
Friction Aggregate:	None

Location(s):	Hot-Mix Asphalt Shoulders (Top Lift)
Mixture Use(s)	Hot-Mix Asphalt Surface Course, Mix. "C", N70
AC/PG	PG64-22
RAP% (Max):	10
Design Air Voids:	4.0%, 70 Gyration Design
Mixture Composition (Gradation Mixture)	IL-9.0 mm or IL-12.5mm
Friction Aggregate:	None

Location(s):	Hot-Mix Asphalt Shoulders (Lower Lift)
Mixture Use(s)	Hot-Mix Asphalt Shoulders
AC/PG	PG58-22
RAP% (Max):	50
Design Air Voids:	2.0%, 30 Gyration Design
Mixture Composition (Gradation Mixture)	HMA Shoulders
Friction Aggregate:	None

Location(s):	Partial Depth Patching
Mixture Use(s)	Hot-Mix Asphalt Surface Course, Mix. "C", N90
AC/PG	PG64-22
RAP% (Max):	10
Design Air Voids:	4.0%, 90 Gyration Design
Mixture Composition (Gradation Mixture)	IL-9.5mm or IL-12.5mm
Friction Aggregate:	C Surface

F.A.P. RTE.	SECTION	COUNTY	TOTAL SHEETS	SHEET NO.
331	*	WILLIAMSON	29	4
STA. _____		TO STA. _____		
FED. ROAD DIST. NO. _____		ILLINOIS FED. AID PROJECT		
* (1-2)RS-3,(1-3)RS-2				

GENERAL NOTES

THE THICKNESS OF THE HOT-MIX ASPHALT MIXTURE SHOWN ON THE PLANS IS THE NOMINAL THICKNESS. DEVIATIONS FROM THE NOMINAL THICKNESS WILL BE PERMITTED WHEN SUCH DEVIATIONS OCCUR DUE TO IRREGULARITIES IN THE EXISTING SURFACE OR BASE ON WHICH THE HOT-MIX ASPHALT MIXTURE IS PLACED.

FACTORS USED FOR ESTIMATING PLAN QUANTITIES ARE AS FOLLOWS AND SHALL NOT BE USED FOR THE BASIS OF FINAL QUANTITIES.

ALL HOT-MIX ASPHALT	2.016 TON/CU YD
ALL AGGREGATE	2.05 TON/CU YD
HOT-MIX ASPHALT MATERIALS:	
ON PAVEMENT	0.09 GAL/SQ YD
ON AGGREGATE	0.32 GAL/SQ YD
AGGREGATE (PRIME COAT)	0.0015 TON/SQ YD
MIXTURE FOR CRACKS, JOINTS, AND FLANGEWAYS	2 TON/MILE

THE QUANTITY OF SHORT TERM PAVEMENT MARKING SHOWN IN THE PLANS IS BASED ON ONE APPLICATION EACH FOR THE PRIME COAT, BINDER COURSE, AND SURFACE COURSE.

QUANTITIES SHOWN IN THE PLANS FOR PATCHING ARE ESTIMATES. THE ACTUAL AMOUNT OF PATCHING REQUIRED SHALL BE DETERMINED BY THE ENGINEER IN THE FIELD.

QUANTITIES SHOWN IN THE PLANS FOR MIXTURE FOR CRACKS, JOINTS, AND FLANGEWAYS ARE ESTIMATES. THE ACTUAL AMOUNT SHALL BE DETERMINED BY THE ENGINEER IN THE FIELD.

THE CONTRACTOR SHALL STAMP STATIONING IN THE HOT-MIX ASPHALT SURFACE AT 300 FT. INTERVALS ON THE OUTSIDE EDGE OF PAVEMENT AND AS DIRECTED BY THE ENGINEER. THE STATION SYMBOL STAMPS USED SHALL BE FURNISHED BY THE CONTRACTOR. THEY SHALL BE 5 1/2" TALL OF A DESIGN APPROVED BY THE ENGINEER, AND SHALL REMAIN THE PROPERTY OF THE CONTRACTOR.

HOT-MIX RESURFACING SHALL BE PLACED IN A SEQUENCE THAT WILL MINIMIZE THE TIME THE CENTERLINE EDGE IS EXPOSED TO TRAFFIC. WHEN AT THE END OF A DAY'S OPERATION THE EXPOSED CENTERLINE EDGE IS GREATER THAN 2000 FT., THE CONTRACTOR SHALL BE REQUIRED TO PAVE IN THE ADJACENT LANE ON THE FOLLOWING WORK DAY. PRIOR TO WINTER SHUTDOWN, RESURFACING ON ADJACENT LANES IS TO BE BROUGHT UP TO THE SAME ELEVATION.

UTILITIES HAVE NOT BEEN LOCATED FOR THIS PROJECT. IT IS THE CONTRACTOR'S RESPONSIBILITY TO CALL J. U. L. I. E. BEFORE BEGINNING ANY WORK.

AT THE MAIN ST. CROSSOVER, WATER STANDING NEAR THE WEST MEDIAN INLET HAS BEEN OBSERVED. A QUANTITY FOR GRADING AND SHAPING EXISTING SHOULDERS HAS BEEN ADDED TO CORRECT THE PONDING OF WATER. THIS WORK SHALL BE DONE AS DIRECTED BY THE ENGINEER.

PRIOR TO PLACEMENT OF FINAL PAVEMENT MARKING, THE RESIDENT ENGINEER SHOULD CONTACT THE BUREAU OF OPERATIONS AND ARRANGE FOR INSPECTION AND APPROVAL OF THE PAVEMENT MARKING LAYOUT.

RECLAIMED ASPHALT PAVEMENT (RAP) WILL NOT BE ALLOWED FOR USE AS AGGREGATE IN AGGREGATE SHOULDERS, TYPE B.

THE FLAGGERS DURING ANY NIGHT-TIME CONSTRUCTION SHALL BE LIGHTED ACCORDING TO ART. 701.13 IN THE STANDARD SPECIFICATIONS FOR ROAD AND BRIDGE CONSTRUCTION.

THE REMOVAL OF THE EXISTING BITUMINOUS SHOULDERS AT SIDE ROADS ALONG THE RADIUS RETURNS AND ALONG MAINLINE AT BEGINNING AND ENDING OF PROJECT SHALL BE INCLUDED IN THE COST OF THE PCC SURFACE REMOVAL - BUTT JOINT.

AT ALL LOCATIONS WHERE THE PROPOSED HOT-MIX ASPHALT OR CONCRETE PAVEMENT JOINS AN EXISTING HOT-MIX ASPHALT OR CONCRETE PAVEMENT, A FULL DEPTH SAWED JOINT SHALL BE CONSTRUCTED. THE COST OF THIS JOINT WILL BE INCLUDED IN THE COST OF THE TYPE OF PAVEMENT BEING CONSTRUCTED.

ANY MIXING OR PLACEMENT OF BITUMINOUS MIXTURES OCCURING PRIOR TO THE TEST STRIP EVALUATION IS AT THE CONTRACTOR'S OWN RISK.

ALL DETECTOR LOOP CORNERS SHALL BE CORE DRILLED 2 INCH MINIMUM DIAMETER.

SAWED SLOTS FOR TWISTED PAIR ELECTRIC CABLES SHALL BE LARGER THAN SINGLE CONDUCTOR LOOP SLOTS.

THE LOCATION OF THE DETECTOR LOOPS, AS SHOWN ON THE PLANS, MAY BE ADJUSTED TO FIT FIELD CONDITIONS AS DIRECTED BY THE ENGINEER OF TRAFFIC OPERATIONS.

THE CONTRACTOR SHALL NOTIFY THE ENGINEER OF TRAFFIC OPERATIONS 72 HOURS PRIOR TO THE SHUT-DOWN OR CUTTING OF EXISTING DETECTOR LOOPS.

COMMITMENTS: NONE

F.A. RTE.	SECTION	COUNTY	TOTAL SHEETS	SHEET NO.
331	#	WILLIAMSON	29	5
STA.		TO STA.		
FED. ROAD DIST. NO.		ILLINOIS FED. AID PROJECT		

* (1-2)RS-3,(1-3)RS-2

SUMMARY OF QUANTITIES

CODE NUMBER	ITEM DESCRIPTION	UNIT	TOTAL QUANTITY	FAP 331 (IL 13 - EBL)	
				1000 RURAL QUANTITY	1000 URBAN QUANTITY
80% FEDERAL / 20% STATE					
WILLIAMSON COUNTY					
CONSTRUCTION TYPE CODE					
X0322729	MATERIAL TRANSFER DEVICE	TON	8246	5836	2410
70106800	CHANGEABLE MESSAGE SIGN	CAL MO	3	2	1
Z0075310	TIE BARS 3/4"	EACH	84	84	0
20201010	GRADING AND SHAPING EXISTING SHOULDERS	SQ YD	80	80	0
35100500	AGGREGATE BASE COURSE, TYPE A 6"	SQ YD	1952		1952
40600115	POLYMERIZED BITUMINOUS MATERIALS (PRIME COAT)	GALLON	6639.8	4676.4	1963.4
40600300	AGGREGATE (PRIME COAT)	TON	110.8	77.9	32.9
40600400	MIXTURE FOR CRACKS, JOINTS, AND FLANGEWAYS	TON	6	4	2
40600855	POLYMERIZED LEVELING BINDER (MACHINE METHOD), N105	TON	4464	3177	1287
40600895	CONSTRUCTING TEST STRIP	EACH	1	1	0
40600982	HOT-MIX ASPHALT SURFACE REMOVAL - BUTT JOINT	SQ YD	497	381	116
40600985	PORTLAND CEMENT CONCRETE SURFACE REMOVAL - BUTT JOINT	SQ YD	659	428	231
40600990	TEMPORARY RAMP	SQ YD	565.5	420.5	145
40603550	POLYMERIZED HOT-MIX ASPHALT SURFACE COURSE, MIX'D, N105	TON	3782	2659	1123
40800050	INCIDENTAL HOT-MIX ASPHALT SURFACING	TON	143	117	26
42000500	PORTLAND CEMENT CONCRETE PAVEMENT 10"	SQ YD	1952		1952
42001200	PAVEMENT FABRIC	SQ YD	1952		1952
42001300	PROTECTIVE COAT	SQ YD	1952		1952
44000100	PAVEMENT REMOVAL	SQ YD	1952		1952
44200529	CLASS A PATCHES, TYPE II, 8 INCH	SQ YD	73.3	73.3	0
44200533	CLASS A PATCHES, TYPE III, 8 INCH	SQ YD	17.3	17.3	0
44200970	CLASS B PATCHES, TYPE II, 10 INCH	SQ YD	304.3	166.9	137.4
44200974	CLASS B PATCHES, TYPE III, 10 INCH	SQ YD	87.6	15.6	72
44200976	CLASS B PATCHES, TYPE IV, 10 INCH	SQ YD	120	120	0
44212900	PAVEMENT PATCHING (PARTIAL DEPTH)	SQ YD	1678	1282	396
44213000	PATCHING REINFORCEMENT	SQ YD	351	279	72
44213200	SAW CUTS	FOOT	2860	1708	1152
48101200	AGGREGATE SHOULDERS, TYPE B	TON	388	271	117
48203100	HOT-MIX ASPHALT SHOULDERS	TON	3638	2544	1094
67000400	ENGINEER'S FIELD OFFICE, TYPE A	CAL MO	3	2	1
67100100	MOBILIZATION	L SUM	1	0.5	0.5
70100310	TRAFFIC CONTROL AND PROTECTION, STANDARD 701421	L SUM	1	0.5	0.5
70100320	TRAFFIC CONTROL AND PROTECTION, STANDARD 701422	L SUM	1	0.5	0.5
70101800	TRAFFIC CONTROL AND PROTECTION, (SPECIAL)	L SUM	1		1
70102635	TRAFFIC CONTROL AND PROTECTION, STANDARD 701701	L SUM	1	0.5	0.5

PLOT DATE = 3/19/2008
 FILE NAME = c:\pvc\pva\78039\78039.dwg
 USER = mrcorder

F.A. RTE.	SECTION	COUNTY	TOTAL SHEETS	SHEET NO.
331	*	WILLIAMSON	29	6
STA.		TO STA.		
FED. ROAD DIST. NO.		ILLINOIS	FED. AID PROJECT	
* (1-2)RS-3,(1-3)RS-2				

SUMMARY OF QUANTITIES

CODE NUMBER	ITEM DESCRIPTION	UNIT	TOTAL QUANTITY	FAP 331 (IL 13 - EBL)	
				1000 RURAL QUANTITY	1000 URBAN QUANTITY
	CONSTRUCTION TYPE CODE				
70300100	SHORT-TERM PAVEMENT MARKING	FOOT	3753	2508	1245
70300210	TEMPORARY PAVEMENT MARKING - LETTERS AND SYMBOLS	SQ FT	145.6	109.2	36.4
70300220	TEMPORARY PAVEMENT MARKING-LINE 4"	FOOT	35182	24693	10489
70300280	TEMPORARY PAVEMENT MARKING-LINE 24"	FOOT	108	84	24
70301000	WORK ZONE PAVEMENT MARKING REMOVAL	SQ FT	12970	8976	3994
* 78000100	THERMOPLASTIC PAVEMENT MARKING - LETTERS AND SYMBOLS	SQ FT	145.6	109.2	36.4
* 78000200	THERMOPLASTIC PAVEMENT MARKING- LINE 4"	FOOT	35182	24693	10489
* 78000650	THERMOPLASTIC PAVEMENT MARKING - LINE 24"	FOOT	108	84	24
* 78008210	POLYUREA PAVEMENT MARKING TYPE 1 - LINE 4"	FOOT	370	0	370
* 78008270	POLYUREA PAVEMENT MARKING TYPE 1 - LINE 24"	FOOT	24	0	24
78300200	RAISED REFLECTIVE PAVEMENT MARKER REMOVAL	EACH	190	161	29
* 88600100	DETECTOR LOOP, TYPE 1	FOOT	204		204

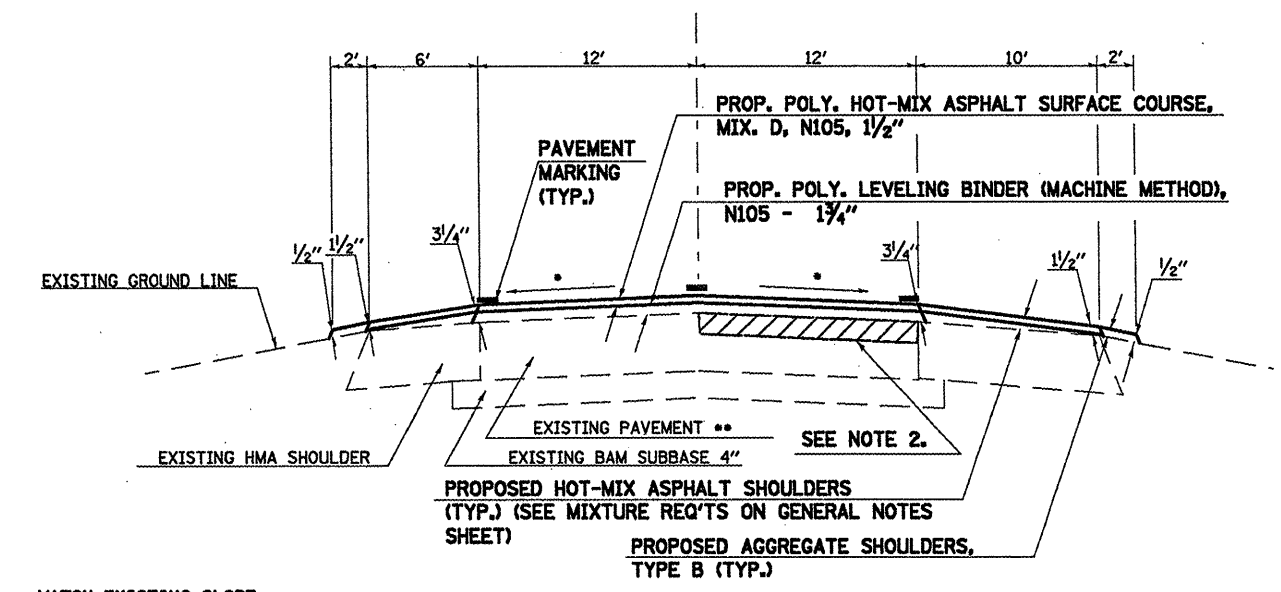
* SPECIALTY ITEMS

F.A.R. RTE.	SECTION	COUNTY	TOTAL SHEETS	SHEET NO.
331	*	WILLIAMSON	29	7
STA.		TO STA.		
FED. ROAD DIST. NO.		ILLINOIS	FED. AID PROJECT	

* (1-2)RS-3,(1-3)RS-2

TYPICAL SECTION

CL FAP 331 (IL 13)
EB LANES ONLY

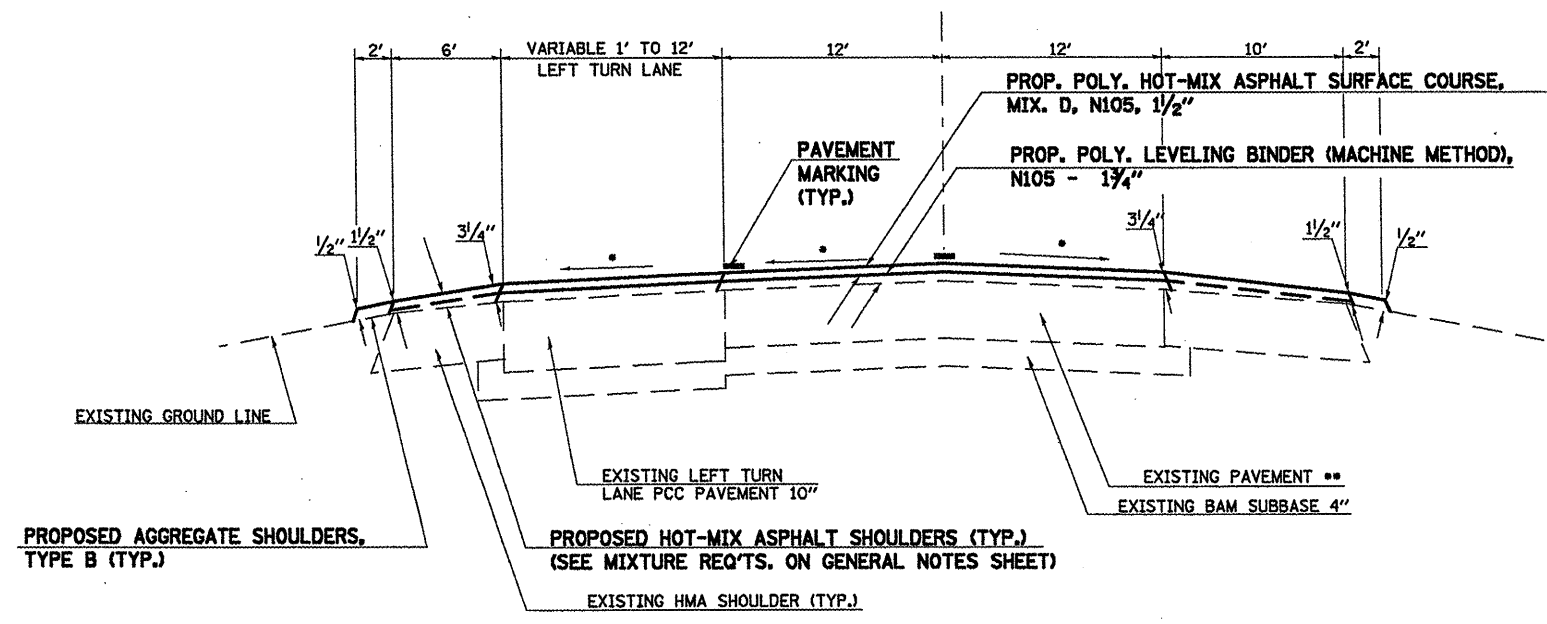


• MATCH EXISTING SLOPE

TO BE USED:
EBL
STA. 467+57 TO STA. 487+17.21
STA. 494+77.60 TO STA. 514+34.85
STA. 521+69.11 TO STA. 554+00.15
STA. 562+13.29 TO STA. 580+19.24
STA. 587+75.88 TO STA. 620+45

TYPICAL SECTION

CL FAP 331 (IL 13)
EB LANES ONLY



• MATCH EXISTING SLOPE

TO BE USED:
STA. 487+17.21 TO STA. 494+77.60 (MAIN ST)
STA. 514+34.85 TO STA. 521+69.11 (WOLF CREEK RD)
STA. 554+00.15 TO STA. 562+13.29 (SAMUEL RD)
STA. 580+19.24 TO STA. 587+75.88 (BRIGGS RD)

EQ. STA. 615+01.50 (BK) FAP 331 - EBL =
STA. 615+05.84 (AH) FAP 331 - EBL

** EXIST. CRC PVT 8" STA 472+00 TO STA 606+25 (13,425')
CLASS A PATCHES THROUGH THIS AREA.
EXIST PCC PVT 10" STA 467+57 TO STA 472+00 (443')
& STA 606+25 TO STA 620+45 (1420')
CLASS B PATCHES THROUGH THIS AREA.

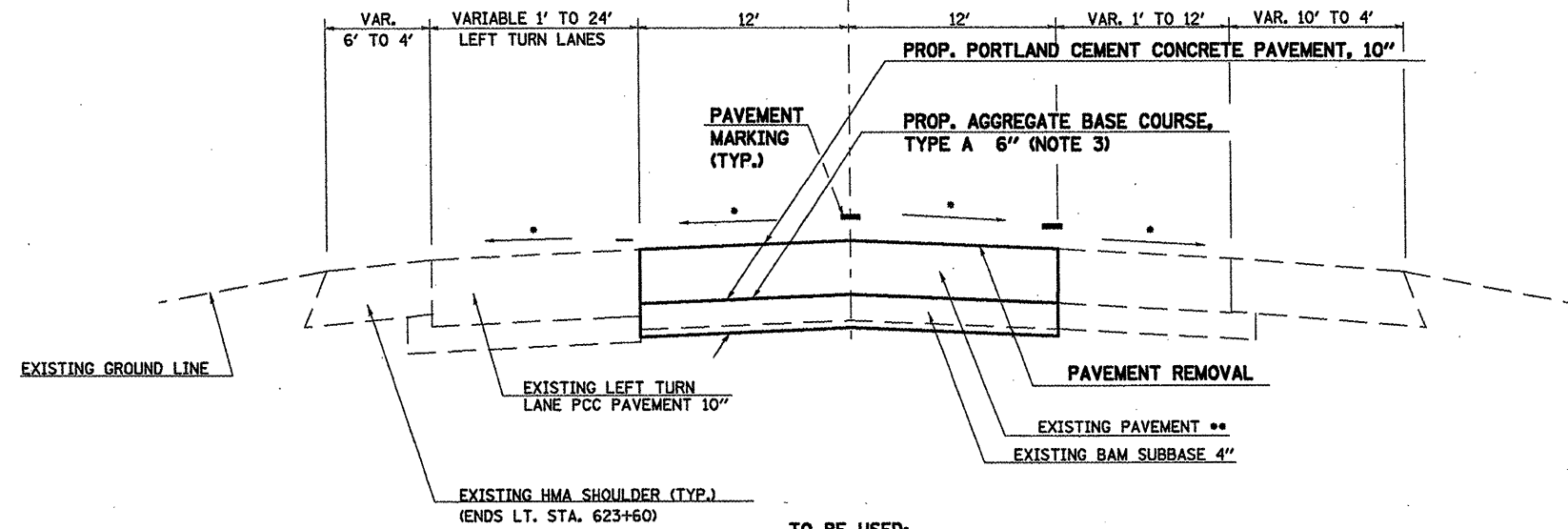
NOTES:
1) URBAN LIMITS ARE FROM STA. 574+20.99 TO STA. 627+77.
2) THERE IS A BITUMINOUS INLAY ON THE EXISTING LANES
THROUGH THE FOLLOWING REGIONS:
EBL STA. 562+13 TO STA. 568+40 ± (627') DRIVING LANE ONLY.

DATE TIME
DRAWN SPEC
CHKD
REF
REF

F.A. RTE.	SECTION	COUNTY	TOTAL SHEETS	SHEET NO
331		WILLIAMSON	29	8
STA. _____		TO STA. _____		
FED. ROAD DIST. NO. _____ ILLINOIS FED. AID PROJECT				
* (1-2)RS-3, (1-3)RS-2				

TYPICAL SECTION

☪ FAP 331 (IL 13)
EB LANES ONLY



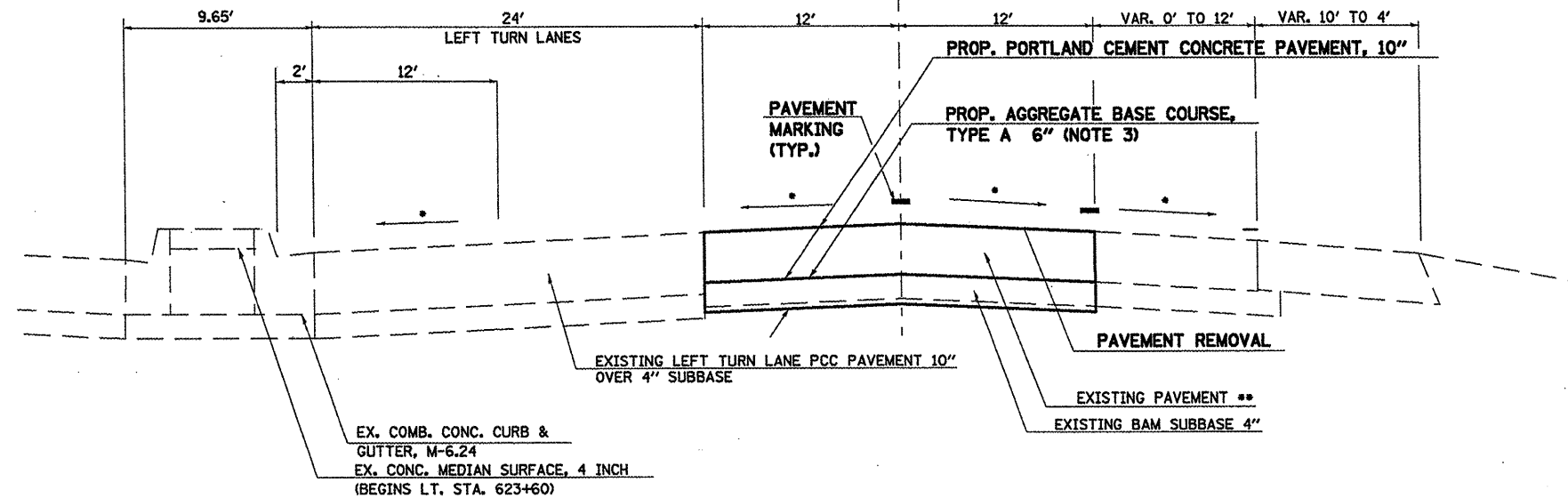
TO BE USED:

STA. 620+45 TO STA. 623+64.5

• MATCH EXISTING SLOPE

TYPICAL SECTION

☪ FAP 331 (IL 13)
EB LANES ONLY



TO BE USED:

STA. 623+64.5 TO STA. 627+77

• MATCH EXISTING SLOPE

•• EXIST. CRC PVT 8" STA 472+00 TO STA 606+25 (13,425') CLASS A PATCHES THROUGH THIS AREA.
EXIST PCC PVT 10" STA 467+57 TO STA 472+00 (443') & STA 606+25 TO STA 620+45 (1420') CLASS B PATCHES THROUGH THIS AREA.

NOTES:

- 1) URBAN LIMITS ARE FROM STA. 574+20.99 TO STA. 627+77.
- 2) THERE IS A BITUMINOUS INLAY ON THE EXISTING LANES THROUGH THE FOLLOWING REGIONS:
EBL STA. 562+13 TO STA. 568+40 ± (627') DRIVING LANE ONLY.
- 3) THE EARTH EXCAVATION NEEDED TO PLACE THE 6" AGGREGATE BASE COURSE SHALL BE INCLUDED IN THE COST OF AGGREGATE BASE COURSE, TYPE A 6".

F.A. RTE.	SECTION	COUNTY	TOTAL SHEETS	SHEET NO.
331	*	WILLIAMSON	29	9
STA. _____		TO STA. _____		
FED. ROAD DIST. NO. ILLINOIS FED. AID PROJECT				
* (1-2)RS-3,(1-3)RS-2				

RESURFACING SCHEDULE - MAINLINE

LOCATION STATION TO STATION	LENGTH FOR INFORMATIONAL PURPOSE ONLY (FT)	ROADWAY WIDTH (FT)	ROADWAY AREA (SQ YD)	HMA SURF REM - BUTT JT	PCC SURFACE REMOVAL - BUTT JT	TEMPORARY RAMP	POLY HMA SUR CSE, MIX D, N105	POLY LEVEL BINDER (MM) N105	POLY BIT MAT (PRIME COAT)	AGG. (PRIME COAT)
				(SQ YD)	(SQ YD)	(SQ YD)	(TON)	(TON)	(GAL)	(TON)
				(SQ YD)	(SQ YD)	(SQ YD)	(TON)	(TON)	(GAL)	(TON)
IL 13 - Division St. to Route 148 Sta 485+33.13 to Sta 620+99.91										
RURAL LIMITS										
467+57.00 TO 574+20.99	10664.0	24.0	28437		133.0	13.3	2401.1	2833.0	2559.4	42.7
467+57.00 TO 471+00								6.7		
RURAL SUBTOTALS				0.0	133.0	13.3	2401	2840	2559.4	42.7
URBAN LIMITS BEGIN STA. 574+20.99										
URBAN LIMITS										
574+20.99 TO 615+01.50	4080.5	24.0	10881				918.8	1083.0	979.3	16.3
EQ. STA. 615+01.50 (BK.) = STA. 615+05.84 (AH)										
615+05.84 TO 620+45.00	539.2	24.0	1438		133.0	13.3	121.7	144.0	129.4	2.2
URBAN SUBTOTALS				0.0	133.0	13.3	1041	1227	1108.7	18.5
IL 13 - LEFT TURN LANES AND MEDIAN CROSSOVERS										
Main St. Turn	487+17.00 TO 492+99.00	582.0	1.0 to 12.0	677			57.1	66.8	60.9	1.02
Crossove	492+99.00 TO 493+99.00	100.0	40.0	357	123.0		30.0	34.9	32.1	0.53
Wolf Creek Rd. Turn	514+35.00 TO 520+22.00	587.0	1.0 to 12.0	633		58.3	53.4	62.5	56.9	0.95
Crossove	520+22.00 TO 521+33.00	111.0	40.0	363	123.0	52.8	30.5	35.6	32.7	0.54
Samuel Rd. Turn	554+00.00 TO 559+96.00	596.0	1.0 to 12.0	651			55.1	64.3	58.6	0.98
Crossove	559+96.00 TO 560+87.00	91.0	40.0	375	135	63.9	31.5	36.8	33.8	0.56
RURAL SUBTOTALS					381.0	175.0	257.6	300.9	275.0	4.6
Briggs Rd. Turn	580+19.00 TO 586+12.00	593.0	1.0 to 12.0	604			51.0	59.7	54.3	0.91
Crossove	586+12.00 TO 587+07.00	95.0	40.0	370	116.0	61.1	31.1	36.2	33.3	0.55
URBAN SUBTOTALS					116.0	61.1	82.1	95.9	87.6	1.5
RURAL TOTALS					381.0	133.0	188.3	2659	3141	2834.4
URBAN TOTALS					116.0	133.0	74.4	1123	1323	1196.3
PROJECT TOTALS					497	266	262.7	3,782	4,464	4,030.7

SIDE ROAD RESURFACING SCHEDULE

NAME	SURFACE TYPE	WIDTH AT EDGE OF PAVEMENT (FT)	DISTANCE TO END OF SURFACING (FT)	WIDTH AT END OF SURFACING (FT)	SURFACE AREA (SQ YD)	PCC SURFACE REMOVAL - BUTT JT (SQ YD)	TEMPORARY RAMP (SQ YD)	POLY BITUMINOUS MATERIAL (PR CT) (GAL)	AGGREGATE (PR CT) (TON)	INCIDENTAL HMA SURFACE (TON)
RURAL LIMITS										
Main Street	pcc	112	60	23	268	98	62.2	24.2	0.40	34
Wolf Creek Rd.	pcc	192	132	24	794	98	106.7	71.5	1.19	134
Samuel Rd.	pcc	114	61	25	303	99	63.3	27.3	0.45	39
URBAN LIMITS										
Briggs Rd.	pcc	127	60	24	309	98	70.6	27.8	0.46	39
RURAL SUBTOTALS						295	232.2	123.0	2.0	207
URBAN SUBTOTALS						98	70.6	27.8	0.5	39
TOTALS:						393	302.8	150.8	2.5	246

PLOT DATE = 3/15/2008
 FILE NAME = c:\pcc\resurf\resurf\resurf.dwg
 PLOT SCALE = 1/8"=1'-0"
 USER NAME = mcdonald

F.A. RTE.	SECTION	COUNTY	TOTAL SHEETS	SHEET NO.
331	#	WILLIAMSON	29	10
STA.		TO STA.		
FED. ROAD DIST. NO.		ILLINOIS FED. AID PROJECT		

* (1-2)RS-3, (1-3)RS-2

SHOULDER RESURFACING SCHEDULE

PCC PAVEMENT SCHEDULE

LOCATION STATION TO STATION		HMA SHOULDER (TON)	AGG. SHOULDER TYPE (TON)	POLY BIT MATLS (PR CT) (GAL)	AGGREGATE (PR CT) (TON)	GRADING & SHAPING EX SHOULDERS (SQ YD)
FAP 331 - MAINLINE						
RURAL LIMITS						
Left	467+57.00 TO 492+98.89	226.0	32.2	152.5	2.54	
Left	493+70.00 TO 520+21.83	236.0	33.6	159.1	2.65	
Left	520+88.80 TO 559+96.29	347.0	49.5	234.4	3.91	
Left	560+70.30 TO 574+20.99	120.0	17.1	81	1.35	
Left	492+34.00 TO 492+93.00					80
RURAL SUBTOTALS		929.0	132.4	627	10.45	80
Left	574+20.99 TO 586+12.15	106.0	15.1	71.5	1.19	
Left	586+91.60 TO 615+01.50	250.0	35.6	168.6	2.81	
EQ. STA. 615+01.50 (BK.) = STA. 615+05.84 (AW)						
Left	615+05.84 TO 620+45.00	48.0	6.8	32.3	0.54	
URBAN SUBTOTALS		404.0	57.5	272.4	4.54	0
Right	467+57.00 TO 492+72.92	372.0	31.9	251.6	4.19	
Right	493+84.15 TO 519+85.01	385.0	33.0	260.1	4.33	
Right	521+77.85 TO 559+75.19	561.0	48.2	379.7	6.33	
Right	560+88.93 TO 574+20.99	197.0	16.9	133.2	2.22	
RURAL SUBTOTALS		1515.0	130.0	1024.6	17.1	0
Right	574+20.99 TO 585+80.15	171.0	14.7	115.9	1.93	
Right	587+06.07 TO 615+01.50	413.0	35.4	279.5	4.66	
Right	615+05.84 TO 620+45.00	80.0	6.8	53.9	1	
URBAN SUBTOTALS		664.0	56.9	449.3	7.6	0
SIDE ROADS						
MAIN ST. SW QUAD.		12.0	1.1	8.3	0.14	
MAIN ST. SE QUAD.		12.0	1.0	8.2	0.14	
WOLF CREEK RD. SW QUAD.		24.0	2.0	15.9	0.26	
WOLF CREEK RD. SE QUAD.		28.0	2.4	18.9	0.32	
SAMUEL RD. SW QUAD.		13.0	1.1	8.5	0.14	
SAMUEL RD. SE QUAD.		11.0	1.0	7.6	0.13	
RURAL SUBTOTALS		100.0	8.6	67.4	1.13	0
BRIGGS RD. SW QUAD.		13.0	1.1	9.0	0.15	
BRIGGS RD. SE QUAD.		13.0	1.1	8.6	0.14	
URBAN SUBTOTALS		26.0	2.2	17.6	0.29	
RURAL TOTALS		2544.0	271.0	1719.0	28.7	80
URBAN TOTALS		1094	116.6	739.3	12.4	0
PROJECT TOTALS		3,638	388	2458.3	41.1	80

LOCATION STATION TO STATION		LENGTH (FT)	WIDTH (FT)	PAVEMENT REMOVAL (SQ YD)	PCC PAVEMENT 10" (SQ YD)	AGGREGATE BASE CSE. TY. A 6" (SQ YD)	PAVEMENT FABRIC (SQ YD)	PROTECTIVE COAT (SQ YD)
FAP 331 - MAINLINE								
URBAN LIMITS								
	620+45.00 TO 627+77.00	732	24	1952.0	1952	1952	1952	1952
PROJECT TOTALS				1952.0	1952.0	1952.0	1952.0	1952.0

PLAT DATE = 4/1/2008
 FILE NAME = c:\pcc\pcc\78039\78039.dwg
 PLAT SCALE = 1"=100'
 USER NAME = mcorbett

F.A.E. RTE.	SECTION	COUNTY	TOTAL SHEETS	SHEET NO.
331		WILLIAMSON	29	11
STA.		TO STA.		
FED. ROAD DIST. NO. - ILLINOIS FED. AID PROJECT				

(1-2)RS-3,(1-3)RS-2

THERMOPLASTIC PAVEMENT MARKING SCHEDULE

STATION TO STATION	THERMOPLASTIC PVT MRKG - LINE 4"				THPL PVT MRK - LINE 24 INCH	THPL PVT MRK LTR & SYMB	POLYUREA PVT MRK - LINE 4 INCH	POLYUREA PVT MRK - LINE 24 INCH	TEMPORARY			NOTES
	4 INCH WHITE	4 INCH YELLOW	4 INCH SKIP-DASH	FOOT					4 INCH	24 INCH	LETTERS & SYMBOLS	
	FOOT	FOOT	FOOT	FOOT					FOOT	FOOT	SQ FT	
IL 13 - Division St. to Route 148												
RURAL LIMITS												
LEFT	467+57.00	TO	492+99.00									Edgeline
	467+57.00	TO	574+20.99						2542			
				316		2666			2666			Main St. Turn Lane
LEFT	489+83.00	TO	492+99.00						316			Only
LEFT	489+93.00							20.8			20.8	Left Turn Arrow
LEFT	490+21.00							15.6			15.6	Edgeline
LEFT	493+99.00	TO	520+22.00						2623			Wolf Creek Turn Lane
LEFT	516+97.00	TO	520+22.00	325					325			Only
LEFT	517+07.00							20.8			20.8	Left Turn Arrow
LEFT	517+35.00							15.6			15.6	Edgeline
LEFT	521+33.00	TO	559+96.00						3863			Samuel Rd. Turn Lane
LEFT	556+66.00	TO	559+96.00	330					330			Only
LEFT	556+76.00							20.8			20.8	Left Turn Arrow
LEFT	557+04.00							15.6			15.6	Edgeline
LEFT	560+87.00	TO	574+20.99						1334			
				971		10362		2666	0		109.2	
RURAL SUBTOTALS												
URBAN LIMITS BEGIN STA. 574+20.99												
URBAN LIMITS												
LEFT	574+20.99	TO	586+12.00						1191			Edgeline
	574+20.99	TO	615+01.50			1020			1020			
LEFT	583+97.00	TO	586+12.00	215					215			Briggs Rd. Turn Lane
LEFT	584+07.00							20.8			20.8	Only
LEFT	584+35.00							15.6			15.6	Left Turn Arrow
LEFT	587+07.23	TO	615+01.50						2795			Edgeline
EQ STA 615+01.5 (BK) = STA. 615+05.84 (AH)												
LEFT	615+05.84	TO	620+45.00			135			674			Edgeline
	620+45.00	TO	626+57.00					153.0	0			
	626+57.00								24.0		24.0	Stop Bar - Thru Lanes
				215		4525		1155	0		36.4	
URBAN SUBTOTALS												
RIGHT	467+57.00	TO	492+73.00	2516					2516			Edgeline
RIGHT	493+29.00			100			24		100	24		Main St. - Stop Bar and Dbl Yellow
RIGHT	493+84.00	TO	519+85.00	2601					2601			Edgeline
RIGHT	520+59.00			246			36		246	36		Wolf Creek - Stop Bar and Dbl Yellow
RIGHT	521+78.00	TO	559+75.00	3797					3797			Edgeline
RIGHT	560+35.00			102			24		102	24		Samuel Rd. - Stop Bar and Dbl Yellow
RIGHT	560+89.00	TO	574+20.99	1332					1332			Edgeline
				10246		448		0	84		0.0	
RURAL SUBTOTALS												
RIGHT	574+20.99	TO	585+80.00	1159					1159			Edgeline
RIGHT	586+47.00			100			24		100	24		Briggs Rd. - Stop Bar and Dbl Yellow
RIGHT	587+06.00	TO	615+01.50	2796					2796			Edgeline
RIGHT	615+05.84	TO	620+45.00	539					539			Edgeline
RIGHT	623+67.00	TO	625+84.00					217.0	0			Right Turn Lane Line
				4,494		100		0	24		0.0	
URBAN SUBTOTALS												
RURAL TOTALS												
URBAN TOTALS												
TOTALS												

PLOT DATE = 2/19/2008
 FILE NAME = c:\pvc\jco\78039\78039.dwg
 PLOT SCALE = 1/8"=1'-0" / IN.
 USER NAME = mcorcoran

F.A. RTE.	SECTION	COUNTY	TOTAL SHEETS	SHEET NO.
351	*	WILLIAMSON	29	13
STA. _____		TO STA. _____		
FED. ROAD DIST. NO. - ILLINOIS FED. AID PROJECT				
* (1-2)RS-3, (1-3)RS-2				



EX. BITUMINOUS PAVEMENT TO BE REMOVED AND REPLACED WITH CLASS B PATCHES, TY. IV, 10 INCH - 120 S.Y.; POLY. HOT-MIX ASPHALT BINDER COURSE - 6.7 TONS (TO BE USED TO FILL IN DIP) STA. 471+25 (SEE DETAIL BELOW)

PROP. PROJECT BEGINS STA. 467+57 (BUTT JT.)

CL FAP 331 (IL-13) EBL

PROP. PROJECT BEGINS STA. 467+57 (BUTT JT.)
PROP. PCC SUR REMOVAL-BUTT JT. - 133 S. Y.
SEE DETAIL, SHT. 24.

EX. PCC PAVEMENT 10"
PROP. CLASS B PATCHES, 10"

EX. CRC PAVEMENT 8"
PROP. CLASS A PATCHES, 8"

PROP. PATCH DETAIL AT STA. 471+25

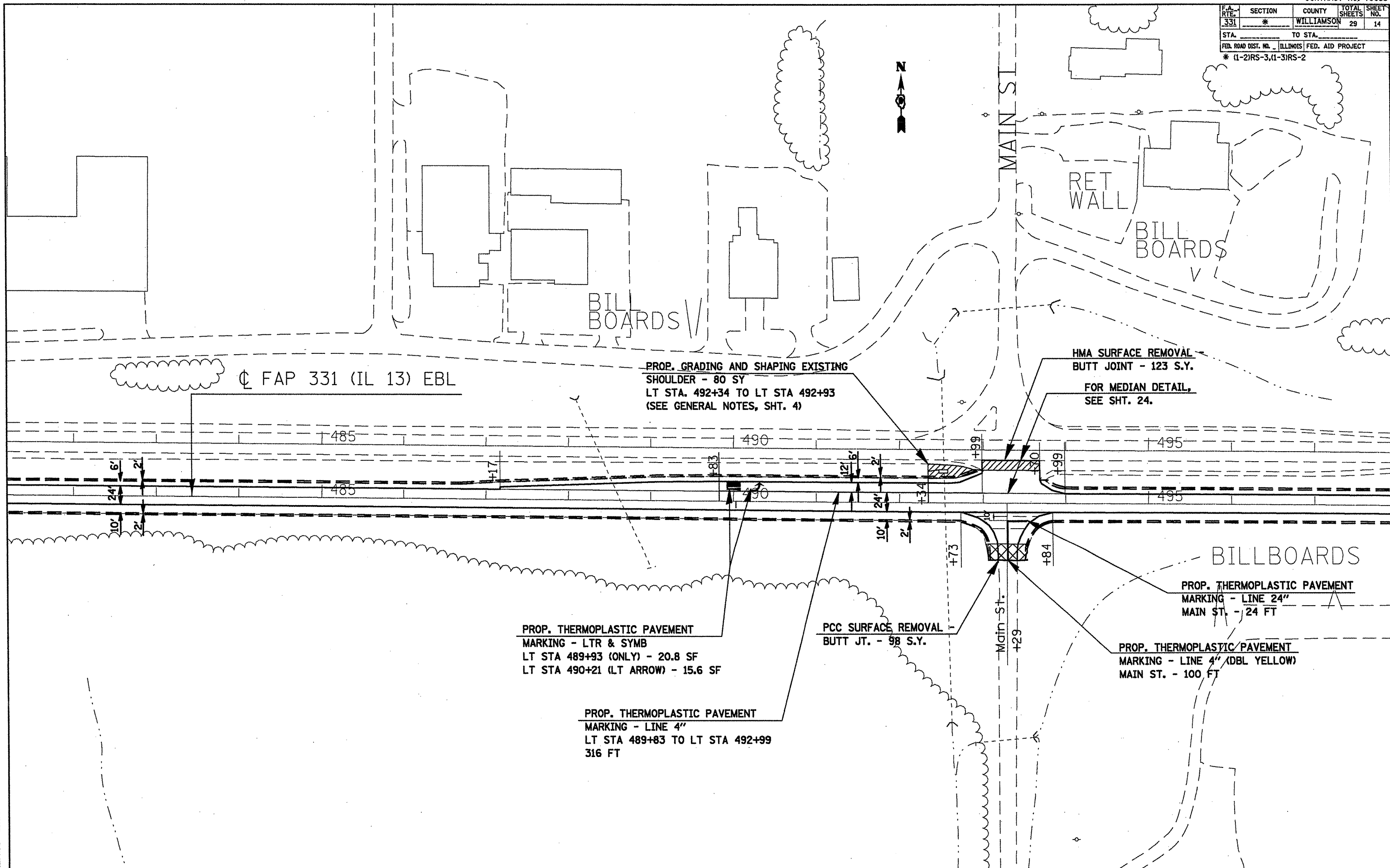
PROP. POLY. HMA SURFACE COURSE, MIX. D, N105 - 1 1/2"
PROP. POLY. HMA BINDER COURSE, N105, IL-19.0 - 1 3/4"

EX. PCC PAVEMENT 10" OVER SUBBASE 4"

PROP. CLASS B PATCHES, TY. IV, 10 INCH.
(POLY. HMA BINDER COURSE, N105, IL-19.0 TO BE USED TO FILL IN ANY DIPPING OF EX. PAVEMENT)

PLOT DATE = 3/19/2008
 FILE NAME = c:\pwworkspace\project\78039\78039.dwg
 USER = j...
 USER NAME = j...

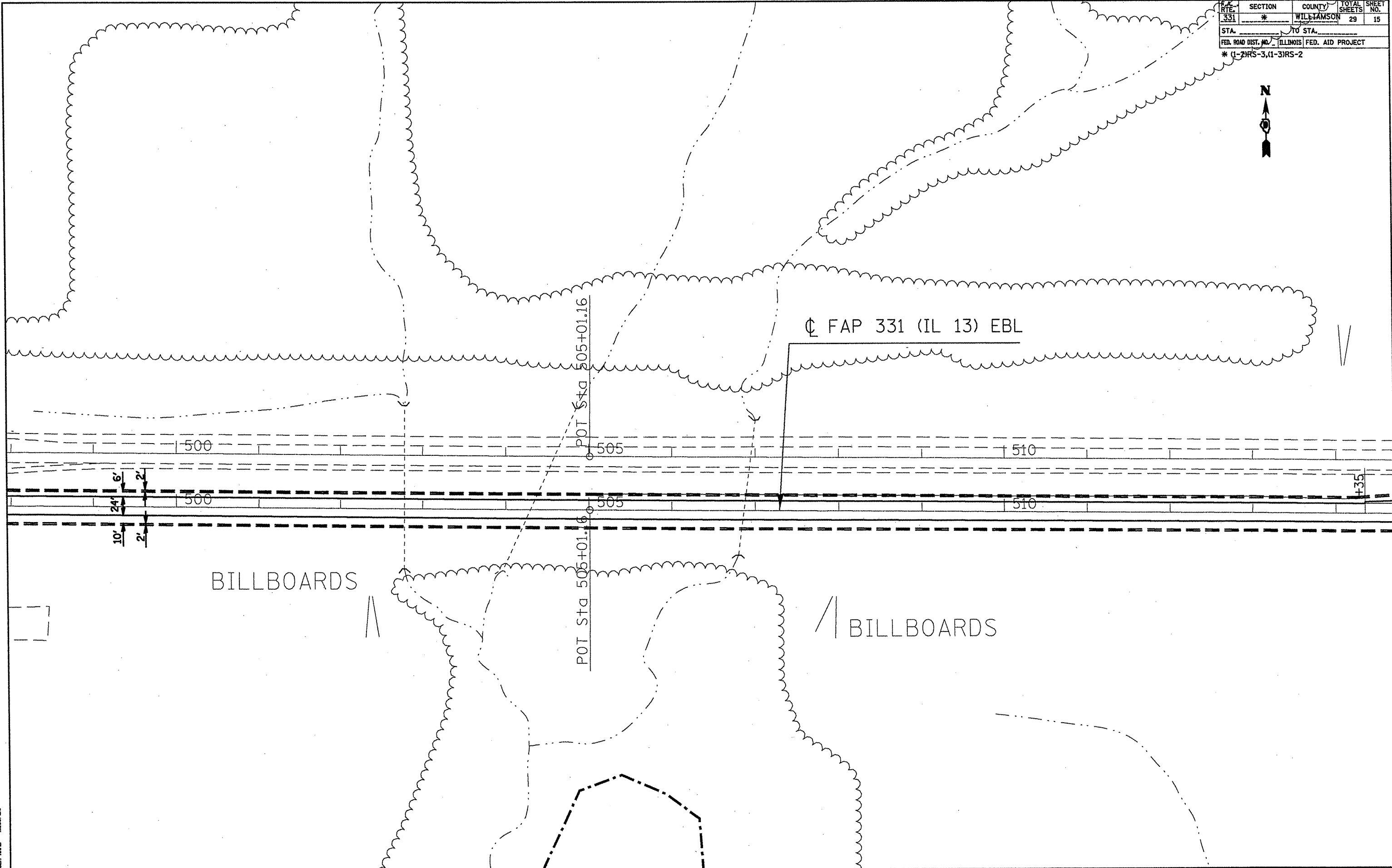
F.A. RTE.	SECTION	COUNTY	TOTAL SHEETS	SHEET NO.
331	*	WILLIAMSON	29	14
STA. _____		TO STA. _____		
FED. ROAD DIST. NO. _____ ILLINOIS FED. AID PROJECT				
* (1-2)RS-3,(1-3)RS-2				



PLAN LAYOUT - STA. 481+00 TO STA. 498+00

PLOT DATE = 3/15/2008
 FILE NAME = c:\p\projects\78039\78039.dwg
 PLOT SCALE = 1/8"=1'-0"
 USER NAME = mason@dr

F.A. RTE.	SECTION	COUNTY	TOTAL SHEETS	SHEET NO.
331	*	WILLIAMSON	29	15
STA.		TO STA.		
FED. ROAD DIST. NO.		ILLINOIS FED. AID PROJECT		
* (1-2)RS-3, (1-3)RS-2				



DATE: 3/13/2008
 USER: mason
 PLOT SCALE: 1" = 40'
 PLOT DATE: 3/13/2008
 USER: mason

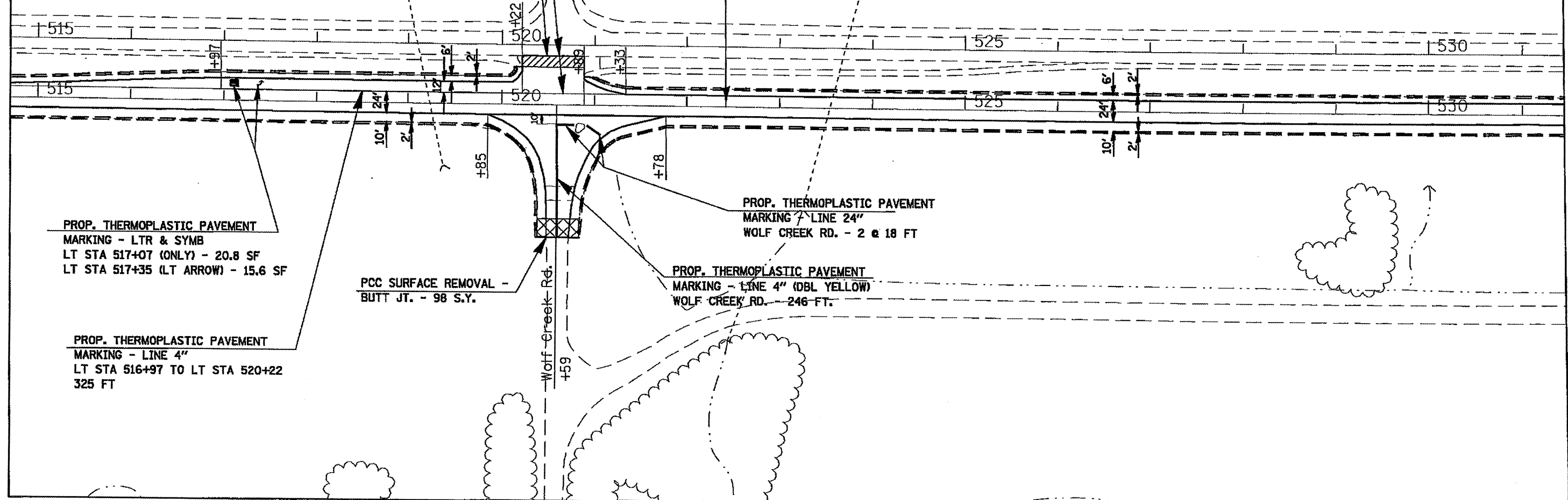
F.A. RTE.	SECTION	COUNTY	TOTAL SHEETS	SHEET NO.
331	*	WILLIAMSON	29	16
STA.		TO STA.		
FED. ROAD DIST. NO. ILLINOIS FED. AID PROJECT				
* (1-2)RS-3, (1-3)RS-2				



V BILLBOARDS V

HMA SURFACE REMOVAL - BUTT JOINT - 123 S.Y.
FOR MEDIAN DETAIL, SEE SHT. 24.

☉ FAP 331 (IL 13) EBL



PROP. THERMOPLASTIC PAVEMENT
MARKING - LTR & SYMB
LT STA 517+07 (ONLY) - 20.8 SF
LT STA 517+35 (LT ARROW) - 15.6 SF

PCC SURFACE REMOVAL - BUTT JT. - 98 S.Y.

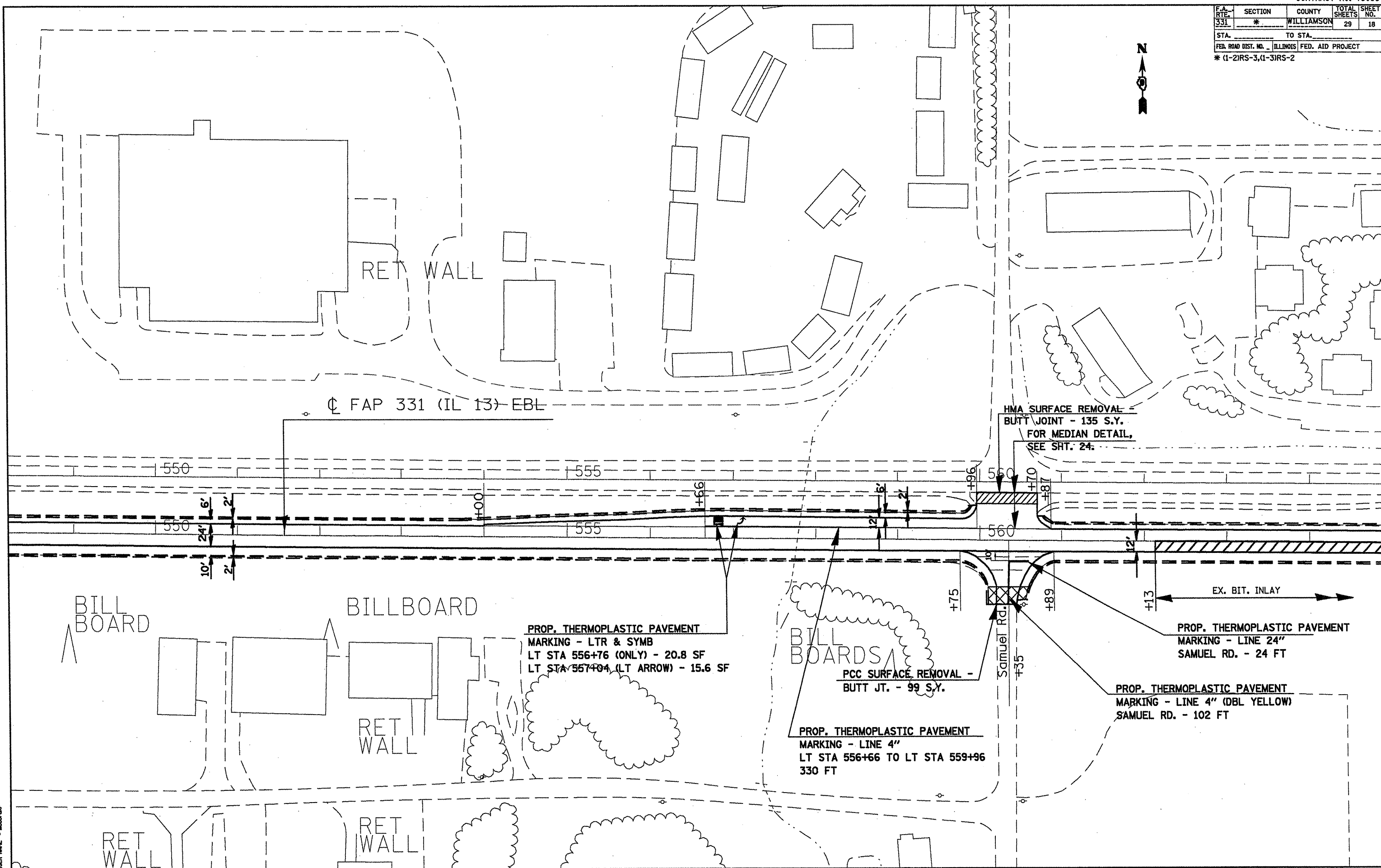
PROP. THERMOPLASTIC PAVEMENT
MARKING - LINE 24"
WOLF CREEK RD. - 2 @ 18 FT

PROP. THERMOPLASTIC PAVEMENT
MARKING - LINE 4" (DBL YELLOW)
WOLF CREEK RD. - 246 FT.

PROP. THERMOPLASTIC PAVEMENT
MARKING - LINE 4"
LT STA 516+97 TO LT STA 520+22
325 FT

PLUT DATE = 4/17/2008
FILE NAME = C:\Users\james\Documents\78039\78039.dwg
USER NAME = james

F.A. RTE.	SECTION	COUNTY	TOTAL SHEETS	SHEET NO.
331	*	WILLIAMSON	29	18
STA.		TO STA.		
FED. ROAD DIST. NO. - ILLINOIS FED. AID PROJECT				
* (1-2)RS-3,(1-3)RS-2				



☉ FAP 331 (IL 13) EBL

HMA SURFACE REMOVAL -
 BUTT JOINT - 135 S.Y.
 FOR MEDIAN DETAIL,
 SEE SHT. 24.

PROP. THERMOPLASTIC PAVEMENT
 MARKING - LTR & SYMB
 LT STA 556+76 (ONLY) - 20.8 SF
 LT STA 557+04 (LT ARROW) - 15.6 SF

PCC SURFACE REMOVAL -
 BUTT JT. - 99 S.Y.

PROP. THERMOPLASTIC PAVEMENT
 MARKING - LINE 4"
 LT STA 556+66 TO LT STA 559+96
 330 FT

PROP. THERMOPLASTIC PAVEMENT
 MARKING - LINE 24"
 SAMUEL RD. - 24 FT

PROP. THERMOPLASTIC PAVEMENT
 MARKING - LINE 4" (DBL YELLOW)
 SAMUEL RD. - 102 FT

EX. BIT. INLAY

Samuel Rd.

BILL BOARD

BILLBOARD

BILLBOARDS

RET WALL

RET WALL

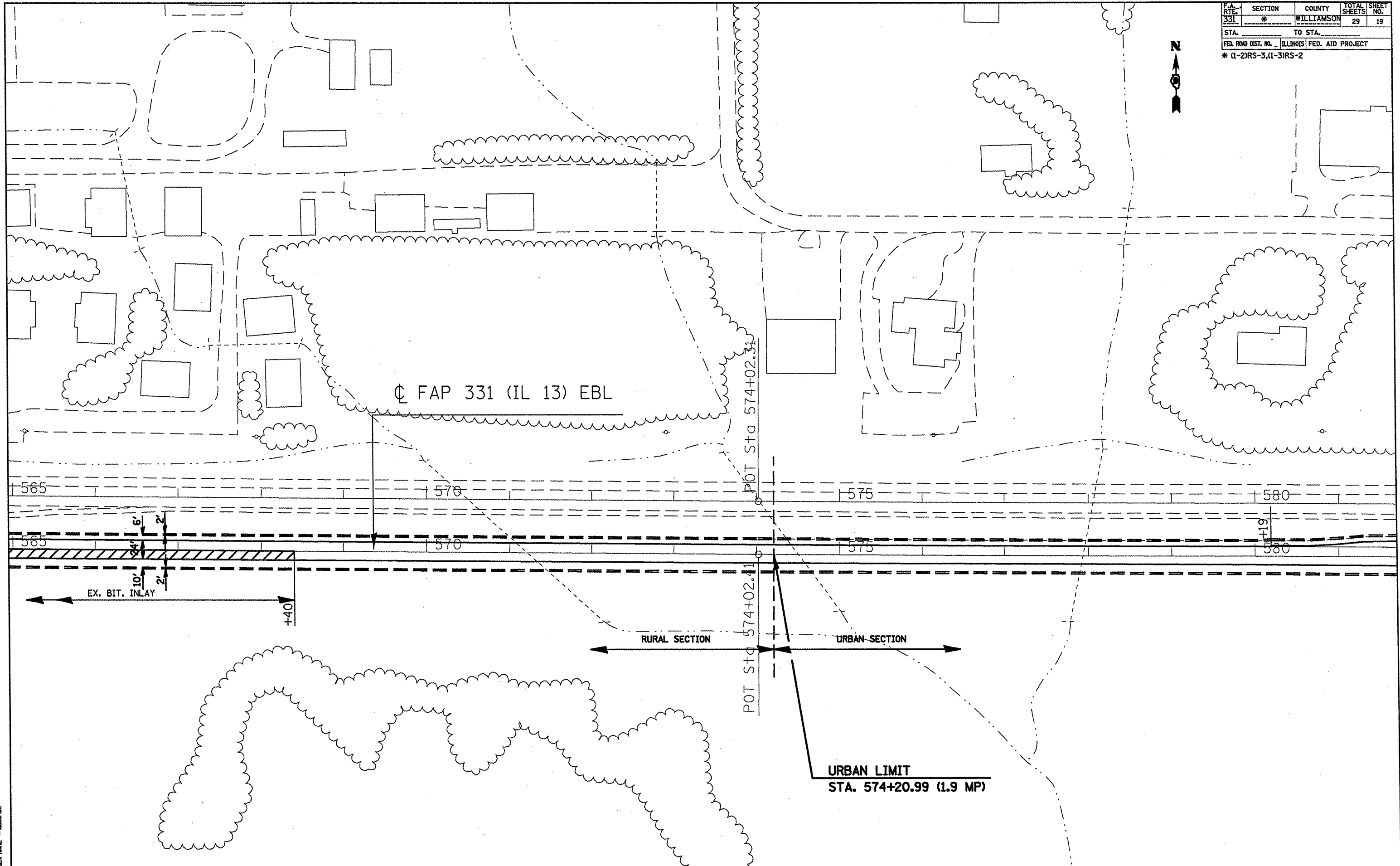
RET WALL

RET WALL

PLOT DATE = 3/19/2008
 FILE NAME = c:\pvc\joe\78039\78039.dwg
 PLOT SCALE = 1/8"=1'-0"
 USER NAME = mcorde

PLAN LAYOUT - STA. 548+10 TO STA. 565+00

F.A. RITE-	SECTION	COUNTY	TOTAL SHEETS	SHEET NO.
331	*	WILLIAMSON	29	19
STA.		TO STA.		
FED. ROAD DIST. NO. - ILLINOIS FED. AID PROJECT				
* (1-2)RS-3,(1-3)RS-2				



PLOT DATE = 3/14/2006
 PLOT SCALE = 1/8" = 100'
 USER NAME = mason-d

F.A. RTE.	SECTION	COUNTY	TOTAL SHEETS	SHEET NO.
331	*	WILLIAMSON	29	20
STA.		TO STA.		
FED. ROAD DIST. NO. ILLINOIS		FED. AID PROJECT		
* (1-2)RS-3,(1-3)RS-2				



☉ FAP 331 (IL 13) EBL

HMA SURFACE REMOVAL -
BUTT JOINT - 116 S.Y.

FOR MEDIAN DETAIL,
SEE SHT. 24.

PROP. THERMOPLASTIC PAVEMENT
MARKING - LTR & SYMB
LT STA 584+07 (ONLY) - 20.8 SF
LT STA 584+35 (LT ARROW) - 15.6 SF

PROP. THERMOPLASTIC PAVEMENT
MARKING - LINE 4"
LT STA 583+97 TO LT STA 586+12
215 FT

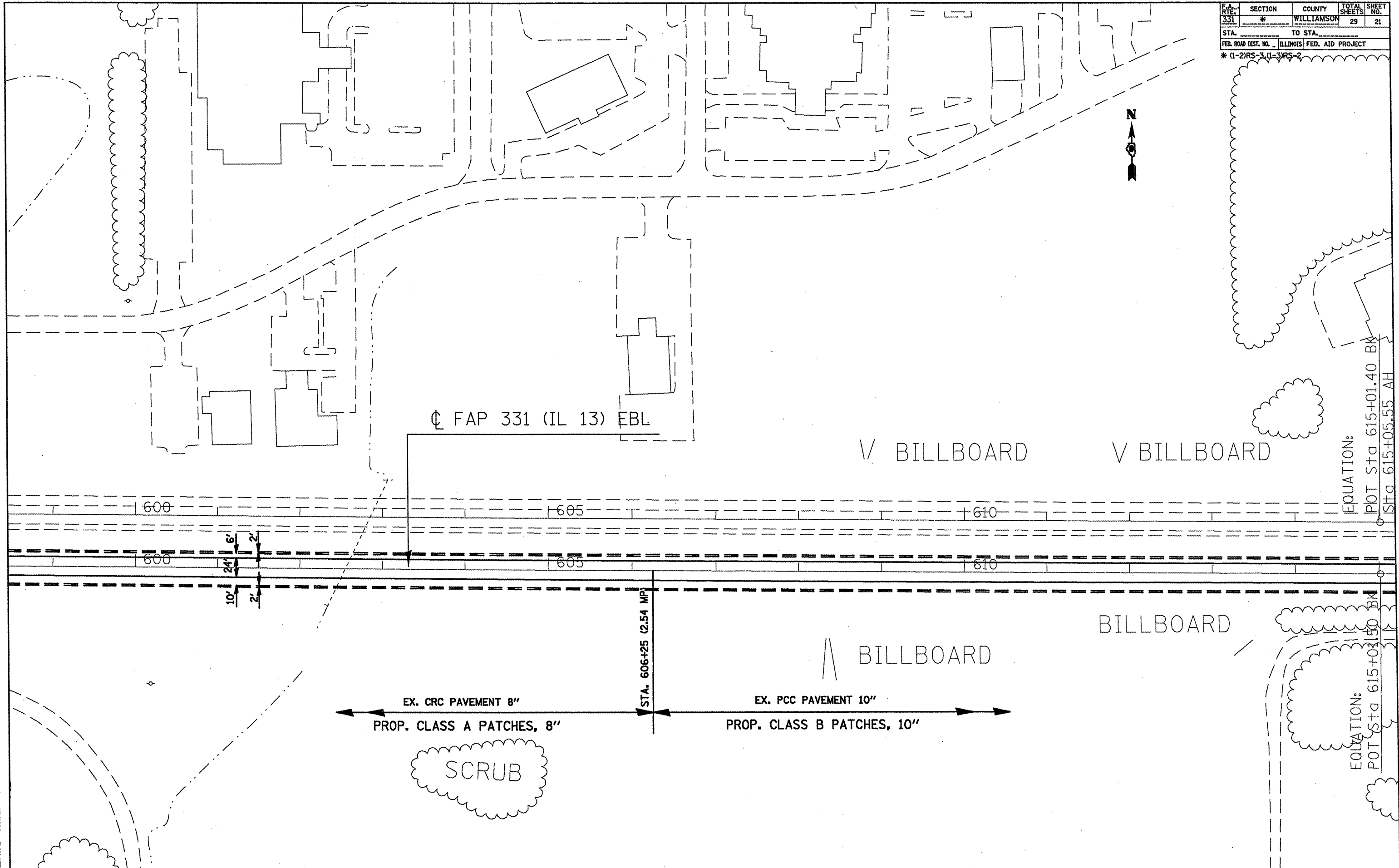
PCC SURFACE REMOVAL -
BUTT JT. - 98 S.Y.

PROP. THERMOPLASTIC PAVEMENT
MARKING - LINE 24"
BRIGGS RD. - 24 FT

PROP. THERMOPLASTIC PAVEMENT
MARKING - LINE 4" (DBL YELLOW)
BRIGGS RD. - 100 FT

PLOT DATE = 3/19/2008
 FILE NAME = c:\pwworkspace\78039\78039.dwg
 USER = masonr

F.A. RTE. 331	SECTION *	COUNTY WILLIAMSON	TOTAL SHEETS 29	SHEET NO. 21
STA.		TO STA.		
FED. ROAD DIST. NO. ILLINOIS FED. AID PROJECT				
* (1-2)RS-3 (1-3)RS-2				



PLOT DATE = 2/10/2009
 FILE NAME = c:\projects\78039\78039.dwg
 PLOT SCALE = 1/8"=1'-0"
 USER NAME = mason@br

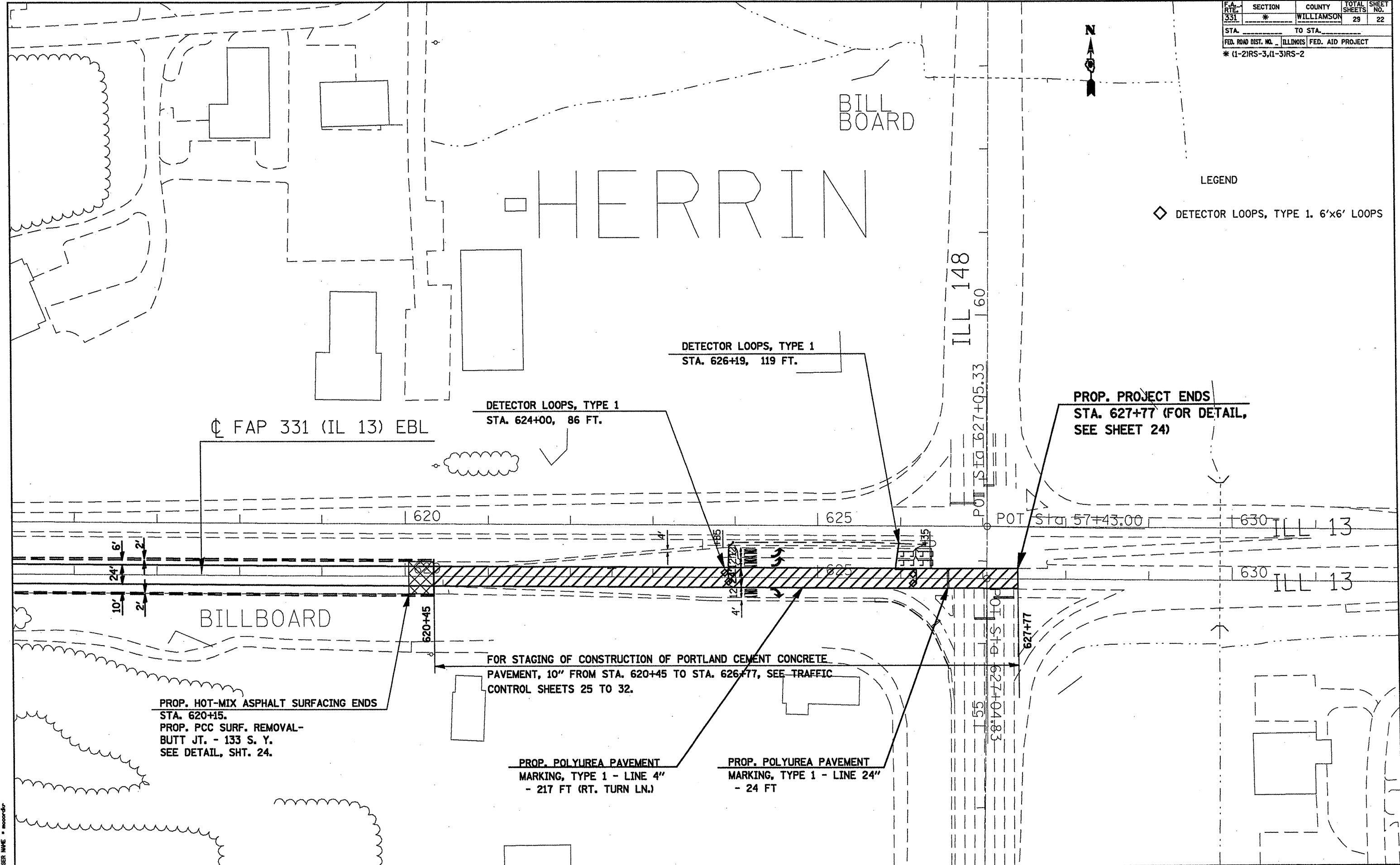
F.A. RTE.	SECTION	COUNTY	TOTAL SHEETS	SHEET NO.
331	*	WILLIAMSON	29	22

STA. _____ TO STA. _____
 FED. ROAD DIST. NO. _____ ILLINOIS FED. AID PROJECT
 * (1-2)RS-3, (1-3)RS-2



LEGEND

◇ DETECTOR LOOPS, TYPE 1. 6'x6' LOOPS



PLAN LAYOUT - STA. 615+10 TO STA. 620+99.9

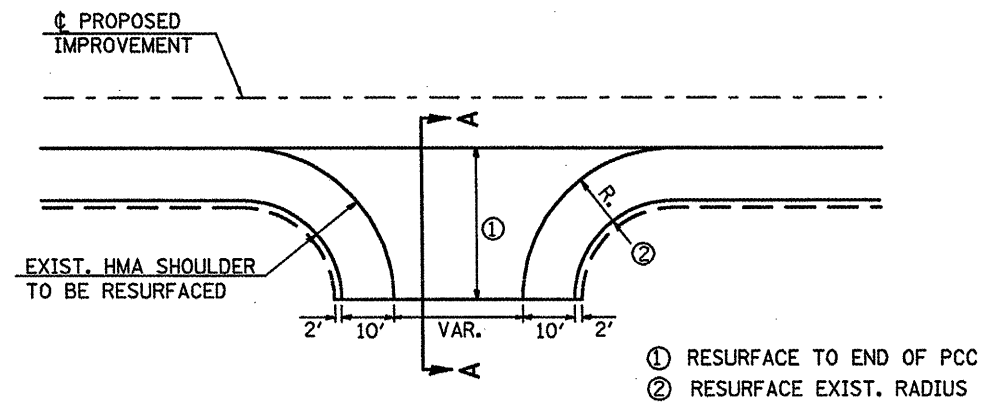
PLOT DATE = 6/10/2008
 FILE NAME = C:\WORK\PROJECTS\78039\PLAN\78039.PLT
 PLOT SCALE = 1/8"=1'-0"
 USER NAME = mason@dr

F.A.P. RTE.	SECTION	COUNTY	TOTAL SHEETS	SHEET NO.
331	*	WILLIAMSON	29	23

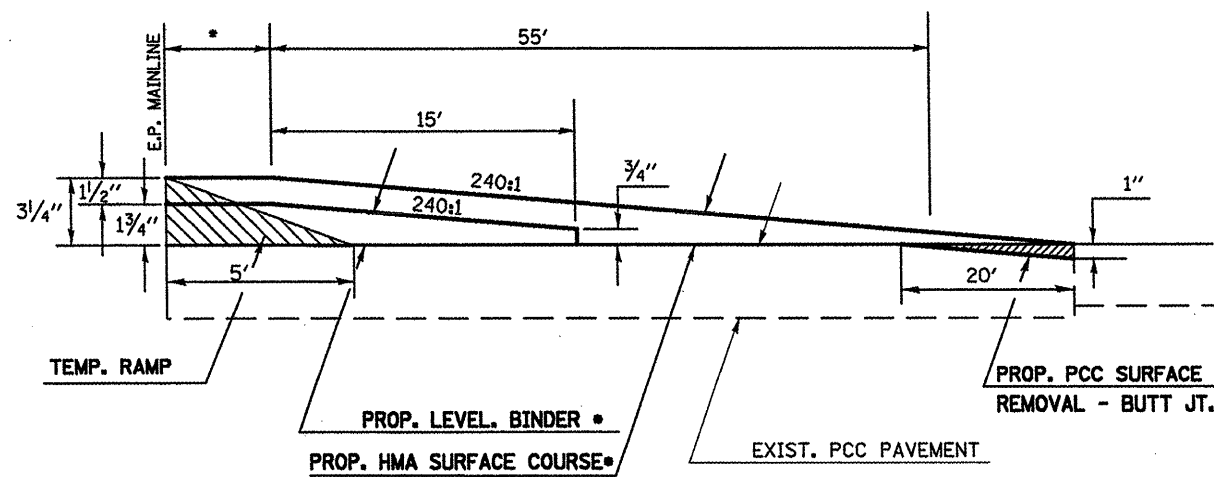
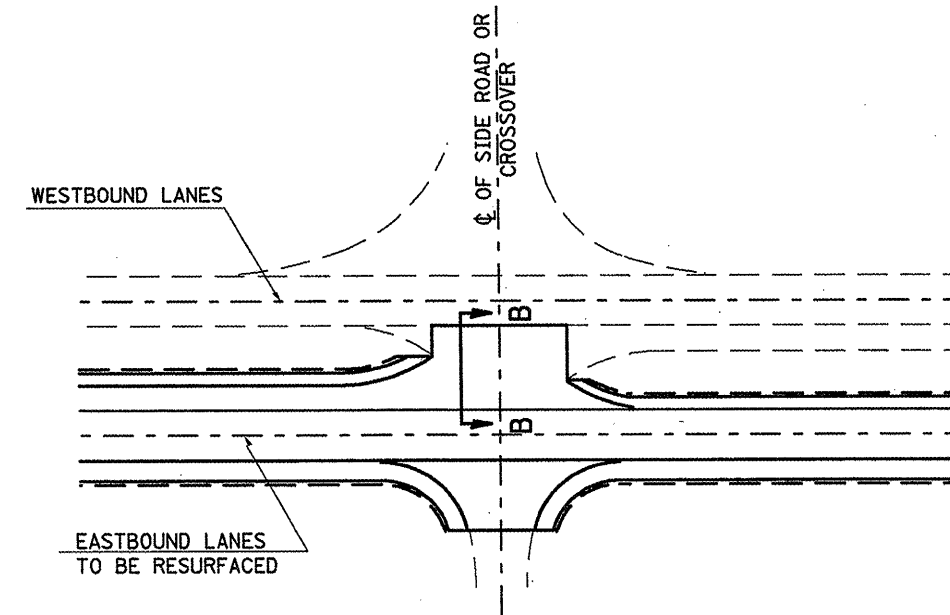
STA.	TO STA.
FED. ROAD DIST. NO. ILLINOIS	FED. AID PROJECT

* (1-2)RS-3, (1-3)RS-2

SIDE ROAD DETAIL



MEDIAN CROSS-OVER DETAIL

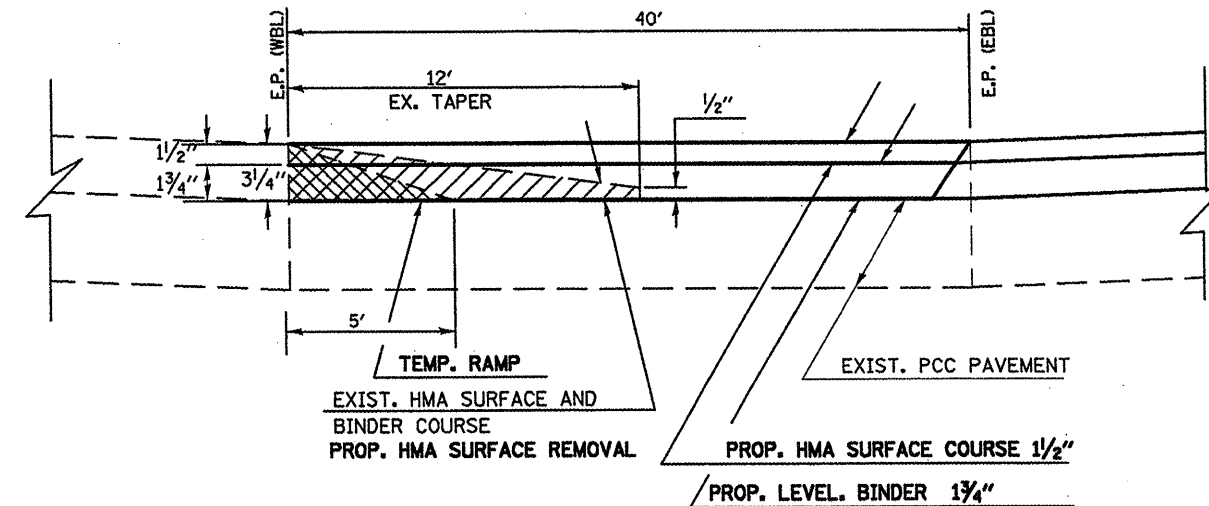


SECTION A-A

•PAY ITEM IS INCIDENTAL
HOT-MIX ASPHALT SURFACE.

TO BE USED:

- RT STA 493+29 (AT MAIN ST) •5'
- RT STA 520+59 (AT WOLF CREEK RD) •77'
- RT STA 560+35 (AT SAMUEL RD) •6'
- RT STA 586+47 (AT BRIGGS RD) •5'



SECTION B-B

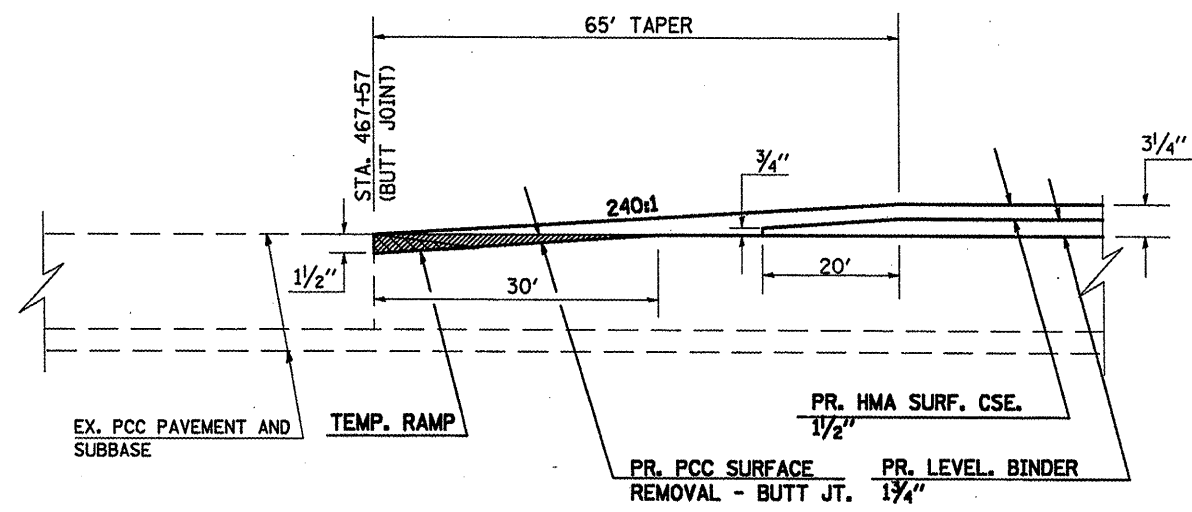
TO BE USED:

- LT STA 493+29 (AT MAIN ST)
- LT STA 520+59 (AT WOLF CREEK RD)
- LT STA 560+35 (AT SAMUEL RD)
- LT STA 586+47 (AT BRIGGS RD)

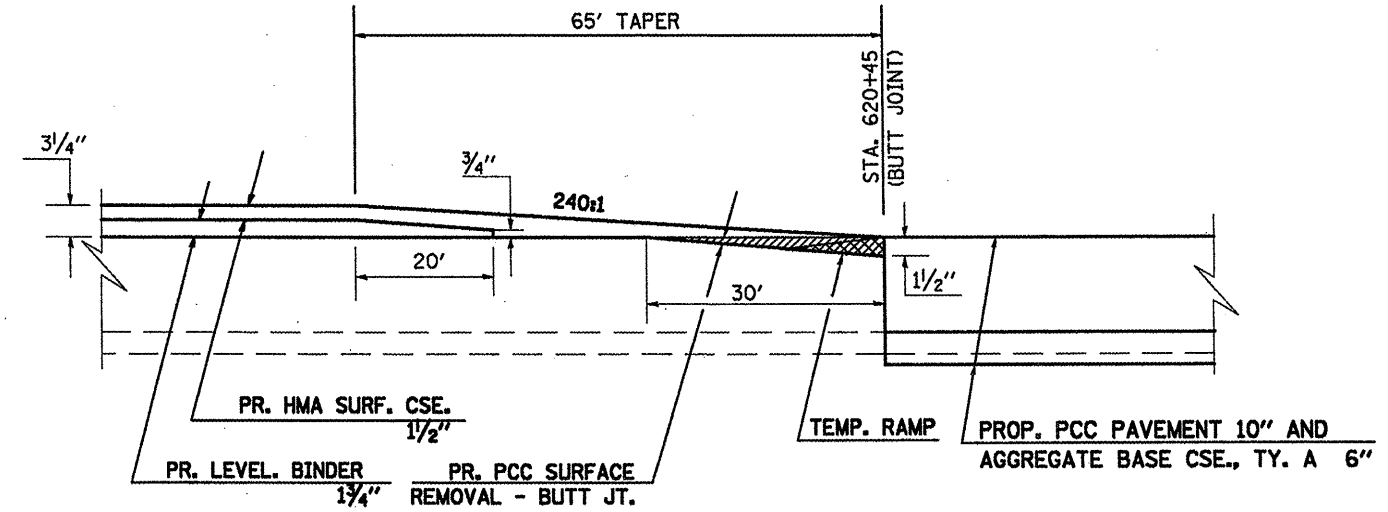
DATE-TIME
DESIGNER
CHECKER
APP. REF.
APP. REF.

F.A.P. RTE.	SECTION	COUNTY	TOTAL SHEETS	SHEET NO.
331	*	WILLIAMSON	29	24
STA.		TO STA.		
FED. ROAD DIST. NO.		ILLINOIS	FED. AID PROJECT	
* (1-2)RS-3,11-3)RS-2				

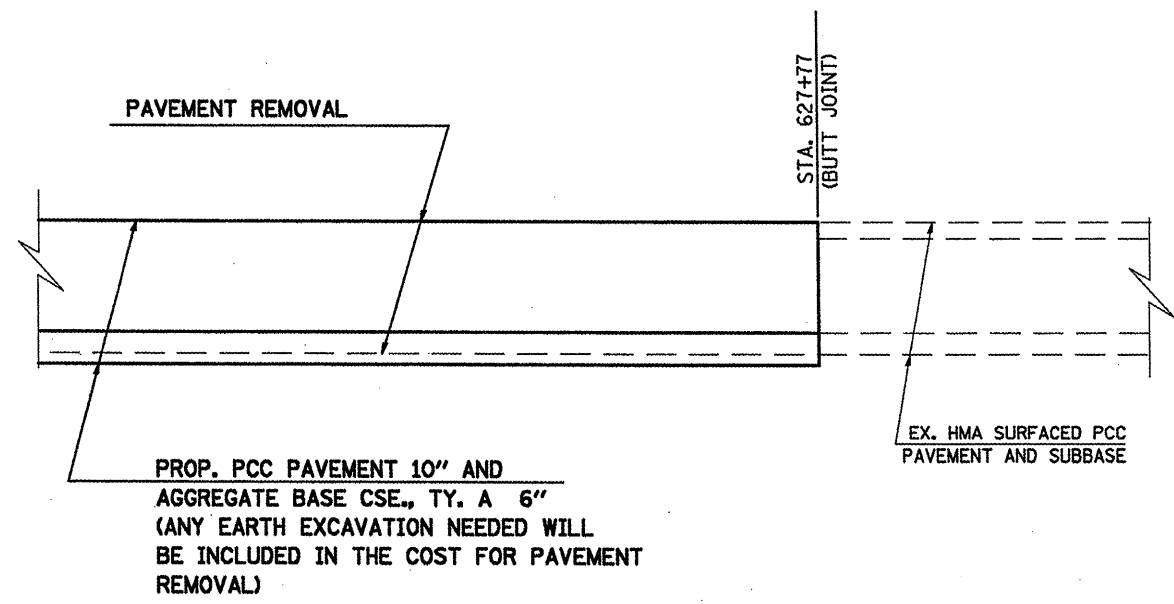
BUTT JOINT DETAIL
STA. 467+57



BUTT JOINT DETAIL
STA. 626+65



BUTT JOINT DETAIL
STA. 627+77



DATE: TIME:
BY: SPEC:
488
489
490

F.A. RTE.	SECTION	COUNTY	TOTAL SHEETS	SHEET NO.
331	*	WILLIAMSON	29	27
STA.		TO STA.		
FED. ROAD DIST. NO. ILLINOIS FED. AID PROJECT				
* (1-2)RS-3,(1-3)RS-2				

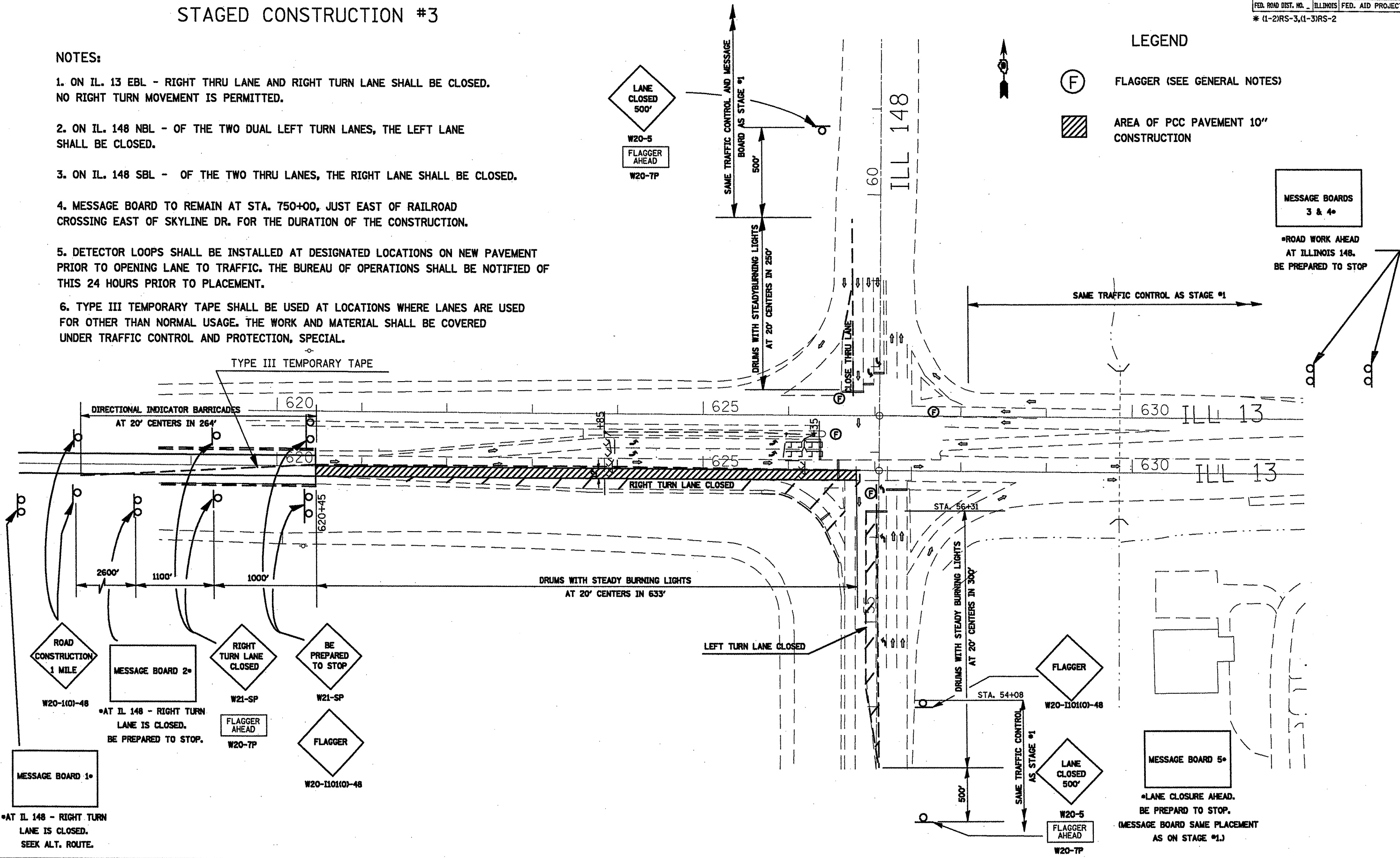
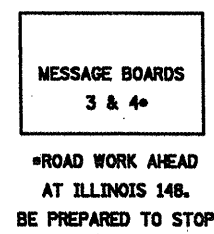
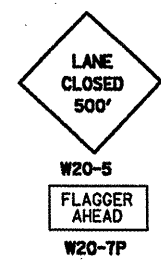
STAGED CONSTRUCTION #3

NOTES:

- ON IL. 13 EBL - RIGHT THRU LANE AND RIGHT TURN LANE SHALL BE CLOSED. NO RIGHT TURN MOVEMENT IS PERMITTED.
- ON IL. 148 NBL - OF THE TWO DUAL LEFT TURN LANES, THE LEFT LANE SHALL BE CLOSED.
- ON IL. 148 SBL - OF THE TWO THRU LANES, THE RIGHT LANE SHALL BE CLOSED.
- MESSAGE BOARD TO REMAIN AT STA. 750+00, JUST EAST OF RAILROAD CROSSING EAST OF SKYLINE DR. FOR THE DURATION OF THE CONSTRUCTION.
- DETECTOR LOOPS SHALL BE INSTALLED AT DESIGNATED LOCATIONS ON NEW PAVEMENT PRIOR TO OPENING LANE TO TRAFFIC. THE BUREAU OF OPERATIONS SHALL BE NOTIFIED OF THIS 24 HOURS PRIOR TO PLACEMENT.
- TYPE III TEMPORARY TAPE SHALL BE USED AT LOCATIONS WHERE LANES ARE USED FOR OTHER THAN NORMAL USAGE. THE WORK AND MATERIAL SHALL BE COVERED UNDER TRAFFIC CONTROL AND PROTECTION, SPECIAL.

LEGEND

- (F) FLAGGER (SEE GENERAL NOTES)
- [Hatched Box] AREA OF PCC PAVEMENT 10" CONSTRUCTION



DATE: 5/21/2008
 FILE NAME: C:\projects\78039\78039.dwg
 PLOT SCALE: 1/8"=1'-0"
 USER: mason

F.A. RTE.	SECTION	COUNTY	TOTAL SHEETS	SHEET NO.
331	*	WILLIAMSON	29	28
STA.	TO STA.			
FED. ROAD DIST. NO.	ILLINOIS	FED. AID PROJECT		

*(1-2)RS-3,(1-3)RS-2

STAGED CONSTRUCTION #4

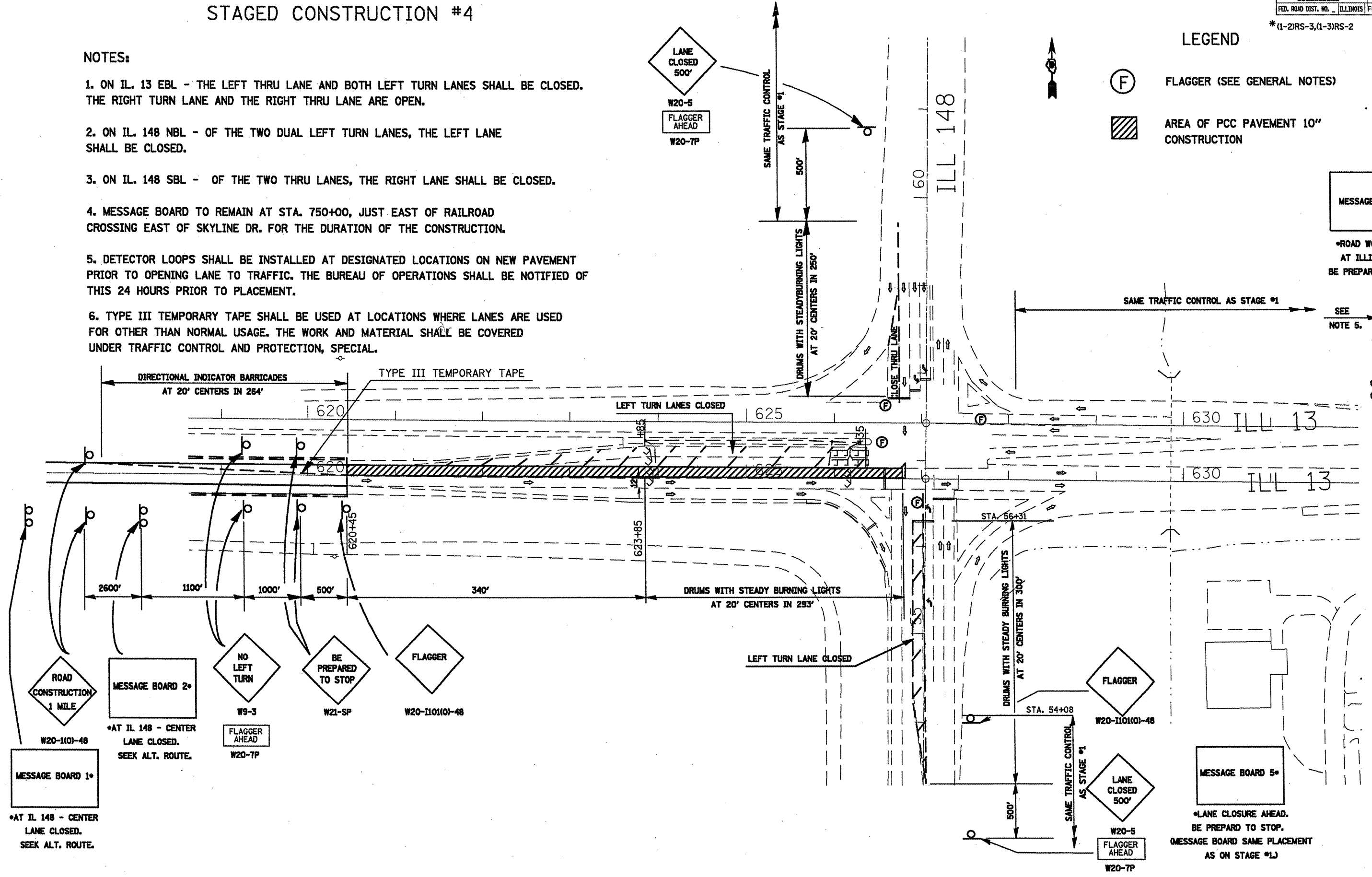
NOTES:

- ON IL. 13 EBL - THE LEFT THRU LANE AND BOTH LEFT TURN LANES SHALL BE CLOSED. THE RIGHT TURN LANE AND THE RIGHT THRU LANE ARE OPEN.
- ON IL. 148 NBL - OF THE TWO DUAL LEFT TURN LANES, THE LEFT LANE SHALL BE CLOSED.
- ON IL. 148 SBL - OF THE TWO THRU LANES, THE RIGHT LANE SHALL BE CLOSED.
- MESSAGE BOARD TO REMAIN AT STA. 750+00, JUST EAST OF RAILROAD CROSSING EAST OF SKYLINE DR. FOR THE DURATION OF THE CONSTRUCTION.
- DETECTOR LOOPS SHALL BE INSTALLED AT DESIGNATED LOCATIONS ON NEW PAVEMENT PRIOR TO OPENING LANE TO TRAFFIC. THE BUREAU OF OPERATIONS SHALL BE NOTIFIED OF THIS 24 HOURS PRIOR TO PLACEMENT.
- TYPE III TEMPORARY TAPE SHALL BE USED AT LOCATIONS WHERE LANES ARE USED FOR OTHER THAN NORMAL USAGE. THE WORK AND MATERIAL SHALL BE COVERED UNDER TRAFFIC CONTROL AND PROTECTION, SPECIAL.

LEGEND

- (F) FLAGGER (SEE GENERAL NOTES)
- [Hatched Box] AREA OF PCC PAVEMENT 10" CONSTRUCTION

MESSAGE BOARD
 ROAD WORK AHEAD AT ILLINOIS 148. BE PREPARED TO STOP



PLOT DATE: 3/21/2008
 FILE NAME: c:\p\proj\78039\78039.dwg
 PLOT SCALE: 1/8"=1'-0"
 USER: mcorcoran

F.A. RTE.	SECTION	COUNTY	TOTAL SHEETS	SHEET NO.
331	*	WILLIAMSON	29	29
STA. _____		TO STA. _____		
FED. ROAD DIST. NO. ILLINOIS FED. AID PROJECT				

* (1-2)RS-3,(1-3)RS-2

DETAIL OF DETECTOR LOOPS

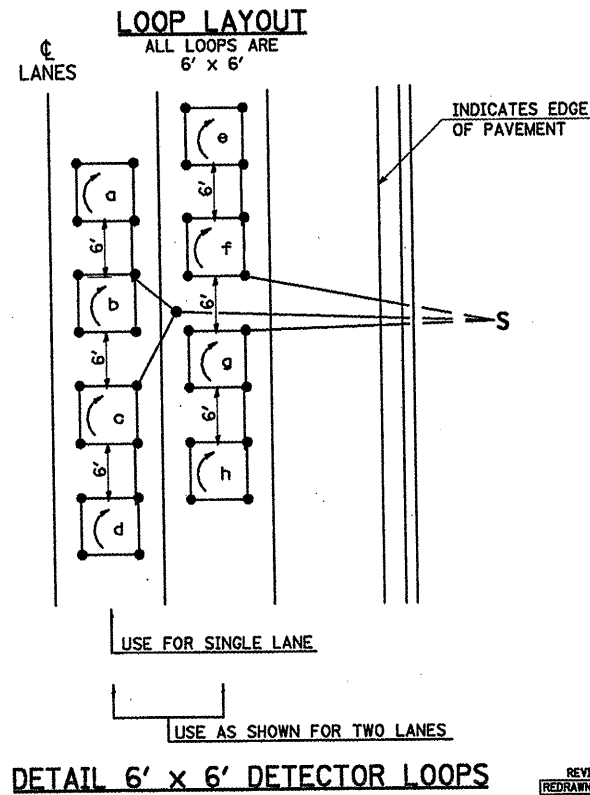
NOTES

(APPLIES TO 6' x 6' LOOPS ONLY)

1. THE DETECTOR LOOPS SHALL BE TYPE I. EACH DETECTOR LOOP SHALL HAVE 3 TURNS OF LOOP WIRE AND BE INSTALLED IN ACCORDANCE WITH THE APPLICABLE PORTIONS OF SECTION 886 OF THE STANDARD SPECIFICATIONS FOR TRAFFIC CONTROL ITEMS.
2. BEGINNING LEAD WIRES SHALL BE CONNECTED TO THE BLACK LEAD AND THE ENDING LEAD WIRES SHALL BE CONNECTED TO THE WHITE LEAD OF THE TWIN TWISTED FEED CABLES AT THE SPLICE POINT.
3. WHERE THE LOOPS ARE INSTALLED PRIOR TO RESURFACING, THE LOOP CORNERS SHALL BE DIAGONALLY CUT.

LOOP LEGEND

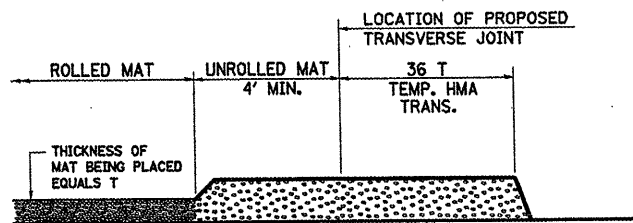
- () CLOCKWISE ROTATION FOR LOOP WIRES
- S INDICATES SPLICE POINT FOR DETECTOR LOOP LEAD
- INDICATES 2" CORE-DRILL



DETAIL 6' x 6' DETECTOR LOOPS

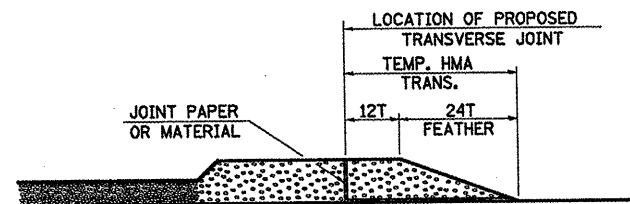
REVISIONS
 REDRAWN 5-11-02
 REVISED 10-27-06
 REVISED
 STD. 9-92

TEMPORARY HOT-MIX ASPHALT TRANSITIONS



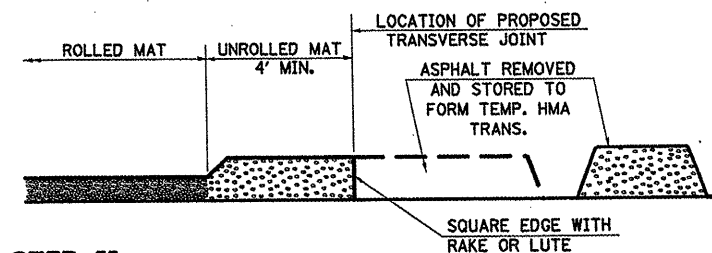
STEP I

1. PLACE HOT-MIX ASPHALT MAT, LENGTH 36 TIMES THE THICKNESS OF THE MAT BEING PLACED PAST THE PROPOSED TRANSVERSE JOINT LOCATION USING NORMAL OPERATING PROCEDURES.
2. EXTREME CARE SHOULD BE TAKEN TO MAINTAIN ENOUGH MATERIAL IN FRONT OF THE SCREED TO MAINTAIN REQUIRED PAVING DEPTH.



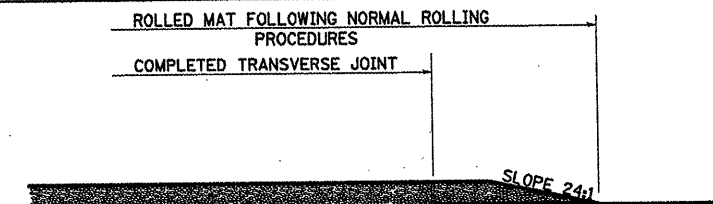
STEP III

1. JOINT PAPER OR OTHER PRESELECTED JOINT MATERIAL IS THEN PLACED IN THE CLEARED AREA AND THE EXCESS ASPHALT USED TO HAND FORM A TRANSITION TO THE DIMENSIONS SHOWN ABOVE.
2. NOTE THAT IN CONSTRUCTING THE TRANSITION, THE MAT DEPTH IS CONTINUED AS PART OF THE TRANSITION BEFORE FORMING THE FEATHER.



STEP II

1. MOVE THE PAVER OUT OF THE WAY AND REMOVE THE ASPHALT FROM THE AREA OF THE PROPOSED TEMPORARY HOT-MIX ASPHALT TRANSITION.
2. SQUARE UP THE END OF THE MAT WITH A RAKE OR LUTE.
3. NOTE THAT THE MAT WITHIN 4' OF THE END OF JOINT IS NOT TO BE ROLLED AT THIS TIME.



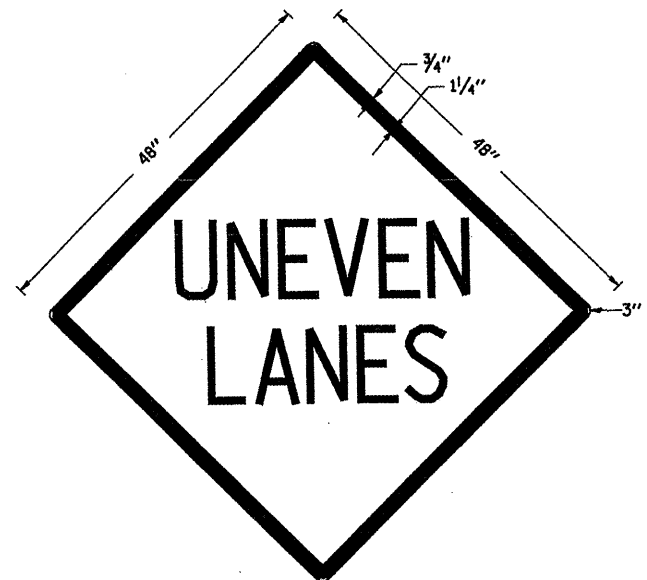
STEP IV

1. COMPLETE TEMPORARY TRANSITION BY ROLLING.
2. TO RESUME PAVING, AT THE JOINT, REMOVE TEMPORARY TRANSITION AND DISPOSE OF THE MATERIAL ACCORDING TO ART. 202.03 OF THE STD. SPECS. (COST INCLUDED IN THE CONTRACT).
3. CONSTRUCTING THE TEMPORARY TRANSITIONS WILL NOT BE PAID FOR SEPARATELY IN ACCORDANCE WITH ARTICLE 406.14 OF THE STANDARD SPECIFICATIONS.

REVISIONS
 REDRAWN 2-15-03
 REVISED 8-16-04
 REVISED 10-29-04
 STD. 9-26

UNEVEN LANES SIGN

WB-11 (48" x 48")



COLORS:
 LEGEND AND BORDER - BLACK NON-REFLECTORIZED
 BACKGROUND - ORANGE REFLECTORIZED

NOTE: PRIOR TO ALLOWING TRAFFIC ON ANY PORTION OF THE ROADWAY THAT HAS BEEN COLDMILLED OR BEFORE RESURFACING OPERATIONS BEGIN, THE CONTRACTOR SHALL HAVE ERECTED "UNEVEN PAVEMENT" SIGNS THAT CONFORM TO THE ABOVE DETAILS. A MINIMUM OF ONE SIGN AT EACH END OF THE IMPROVEMENT WILL BE REQUIRED. THE CONTRACTOR SHALL MAINTAIN THE "UNEVEN PAVEMENT" SIGNS UNTIL THE RESURFACING OPERATIONS ARE COMPLETED.

IF AT ANY TIME THE SIGNS ARE IN PLACE BUT NOT APPLICABLE, THEY SHALL BE TURNED FROM THE VIEW OF MOTORISTS OR COVERED AS DIRECTED BY THE ENGINEER.

THE COST OF FURNISHING, ERECTING, MAINTAINING, AND REMOVING THE REQUIRED SIGNS SHALL BE INCLUDED IN THE CONTRACT.

REVISIONS
 REDRAWN 1-22-03
 REVISED 1-22-03
 REVISED 7-23-04
 STD. 9-41