

CONTRACT: 78040
 ROUTE: F.A.I. 57
 SECTION: (02-1B-1)P-1
 COUNTY: ALEXANDER, IL; MISSISSIPPI, MO
 SHEET 7 OF 67
 FOR INFORMATION ONLY

GENERAL NOTES ON TRUSS DETAILS

ALL MATERIAL SHALL BE ASTM A36 UNLESS NOTED.

ALL SHOP FASTENERS (DENOTED THIS: \leftarrow) AND FIELD FASTENERS (DENOTED THIS: \rightarrow) SHALL BE 1" ASTM A325 HIGH STRENGTH BOLTS. SHOP & FIELD CONNECTIONS MAY BE INTERCHANGED.

FOR DETAILS OF WEB TO FLANGE FILLET WELDS IN TRUSS MEMBERS AND DETAILS AT CHANGE OF SECTION IN TRUSS MEMBERS (WHERE SECTIONS "WITHIN GUSSETS" AND "OUTSIDE GUSSETS" ARE DIFFERENT) SEE MISCELLANEOUS TRUSS DETAILS, SHT. 39

FOR DETAILS OF GUSSET PLATE STIFFENERS, GUSSET PLATE DIAPHRAGMS, AND CHORD DIAPHRAGMS SEE MISCELLANEOUS TRUSS DETAILS, SHT. 39

FOR TOP LATERAL CONNECTIONS ALONG \perp OF BRIDGE SEE MISCELLANEOUS TRUSS DETAILS, SHT. 39

FOR BOTTOM LATERAL CONNECTIONS ALONG \perp OF BRIDGE SEE FLOOR BEAMS, SHT. 29

FOR DETAILS OF FLOOR BEAM CONNECTIONS SEE SHT. 29

FOR DETAILS OF SWAY FRAME CONNECTIONS SEE SHT. 40

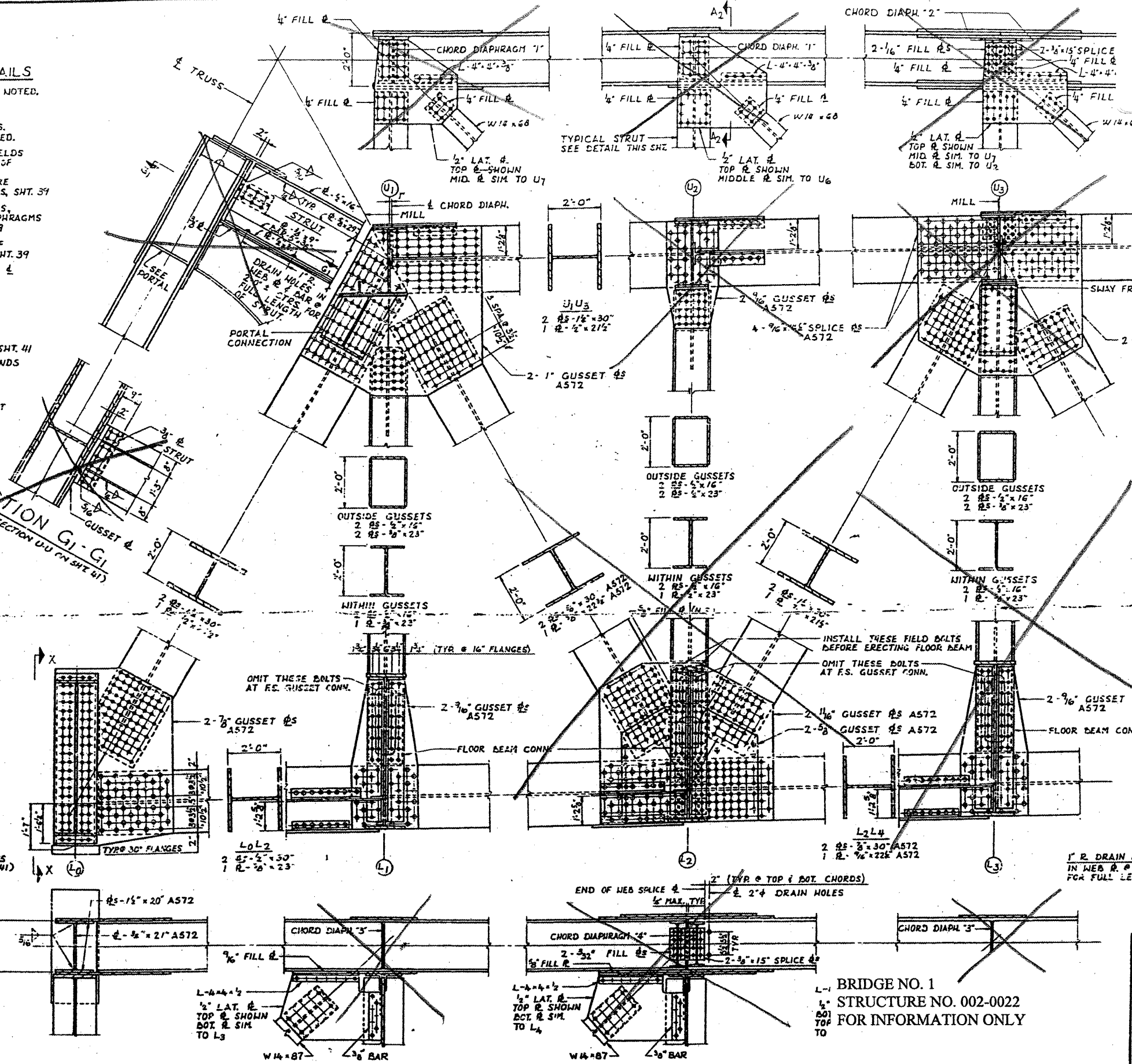
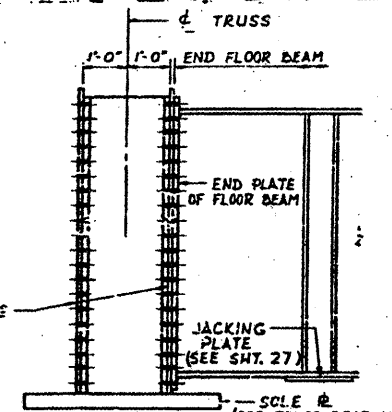
FOR DETAILS OF PORTAL CONNECTIONS SEE SHT. 41

FOR DETAILS OF WEB PLATE CUT-OFF AT ENDS OF DIAGONAL TRUSS MEMBERS, SEE SHT. 37

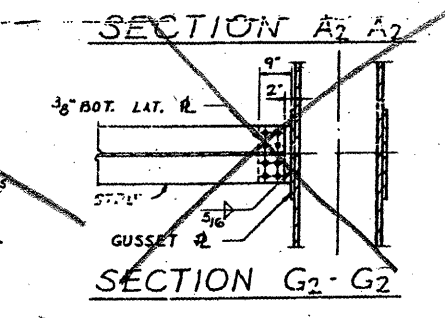
ALL NOMINALLY VERTICAL TRUSS MEMBERS AND THE NOMINALLY VERTICAL \perp OF ALL FLOOR BEAMS ARE TO BE PERPENDICULAR TO A STRAIGHT LINE THROUGH PANEL POINTS L_0 AND L_1 .

THE WIDTH OF TRUSS MEMBERS, OUT-TO-OUT OF FLANGES, SHALL BE AS FOLLOWS:
 CHORDS: 2'-0" (+0, -0)
 DIAGONALS: 2'-0" (+0, -1/2")
 VERTICALS: 2'-0" (+0, -1/2")

SECTION G1-G1
 ALSO SEE SECTION U-U (ON SHT. 41)



DETAIL "A"
 (NOT TO SCALE)
 PROVIDE BEVELED SHIM 1/2" ABOVE & BELOW BOT. LATERAL DIAGONALS AT CONNECTION.



TRUSS DETAILS-L0 TO L3 & U0 TO U3
 F.A.I. RTE. 57 OVER THE MISSISSIPPI RIVER
 PROJECT 1-57-9110
 SECTION (02-1B-1)F&E
 ALEXANDER COUNTY, ILLINOIS
 MISSISSIPPI COUNTY, MISSOURI
 STA. 1141 + 04.75 TO STA. 1182 + 75.25