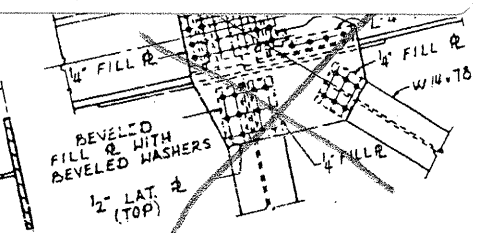
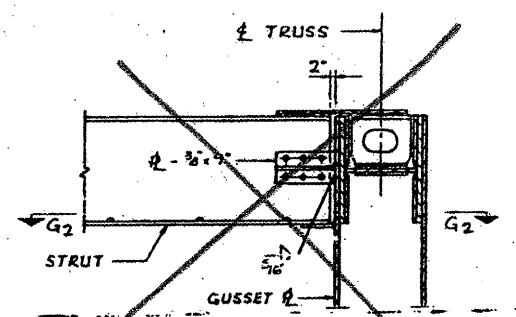


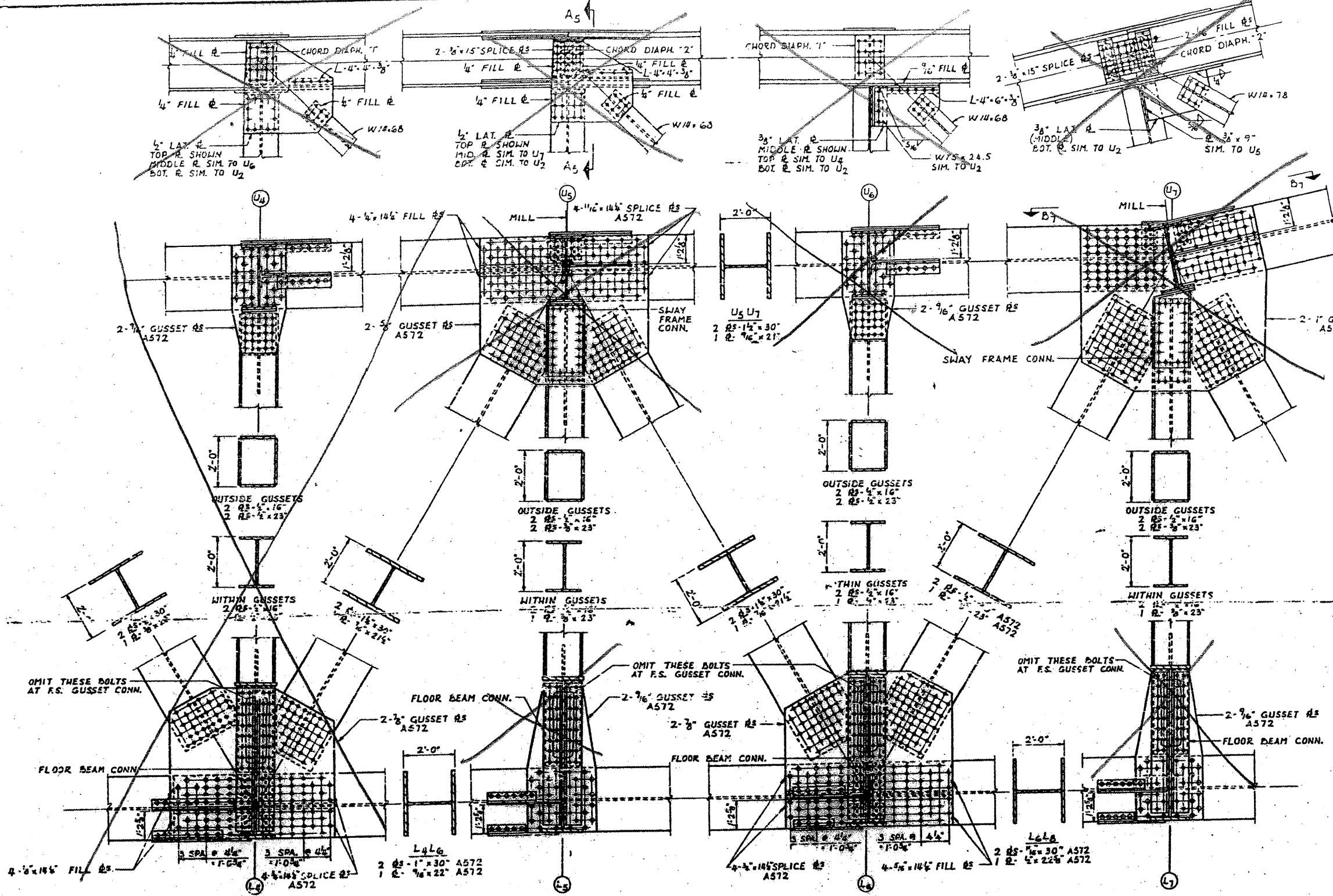
CONTRACT: 78040
 ROUTE: F.A.I. 57
 SECTION: (02-1B-1)P-1
 COUNTY: ALEXANDER, IL; MISSISSIPPI, MO
 SHEET 8 OF 67
 FOR INFORMATION ONLY



SECTION B1-B7



SECTION A5-A5
 SWAY FRAME CONNECTION & VERTICAL AND DIAGONAL TRUSS MEMBERS NOT SHOWN



BRIDGE NO. 1
 STRUCTURE NO. 002-0022
 FOR INFORMATION ONLY

TRUSS DETAILS - L₄ TO L₇ & U₄ TO U₇
 F.A.I. RTE. 57 OVER THE MISSISSIPPI RIVER
 PROJECT 1-57-9(10)
 SECTION (02-1B-0)FBE
 ALEXANDER COUNTY, ILLINOIS
 MISSISSIPPI COUNTY, MISSOURI
 STA. 1141 + 84.75 TO STA. 1182 + 75.25

ALFRED BENESCH & COMPANY
 CONSULTING ENGINEERS
 108 WABASH AVE. CHICAGO, ILLINOIS