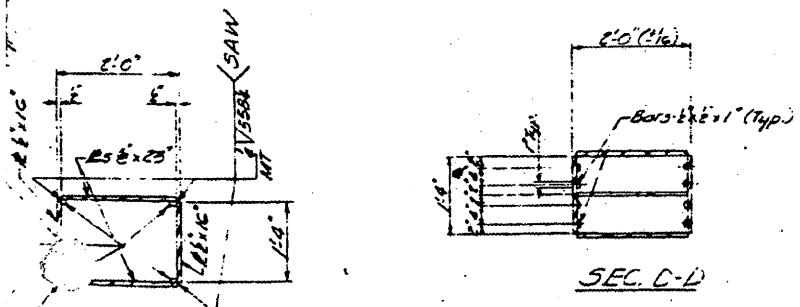
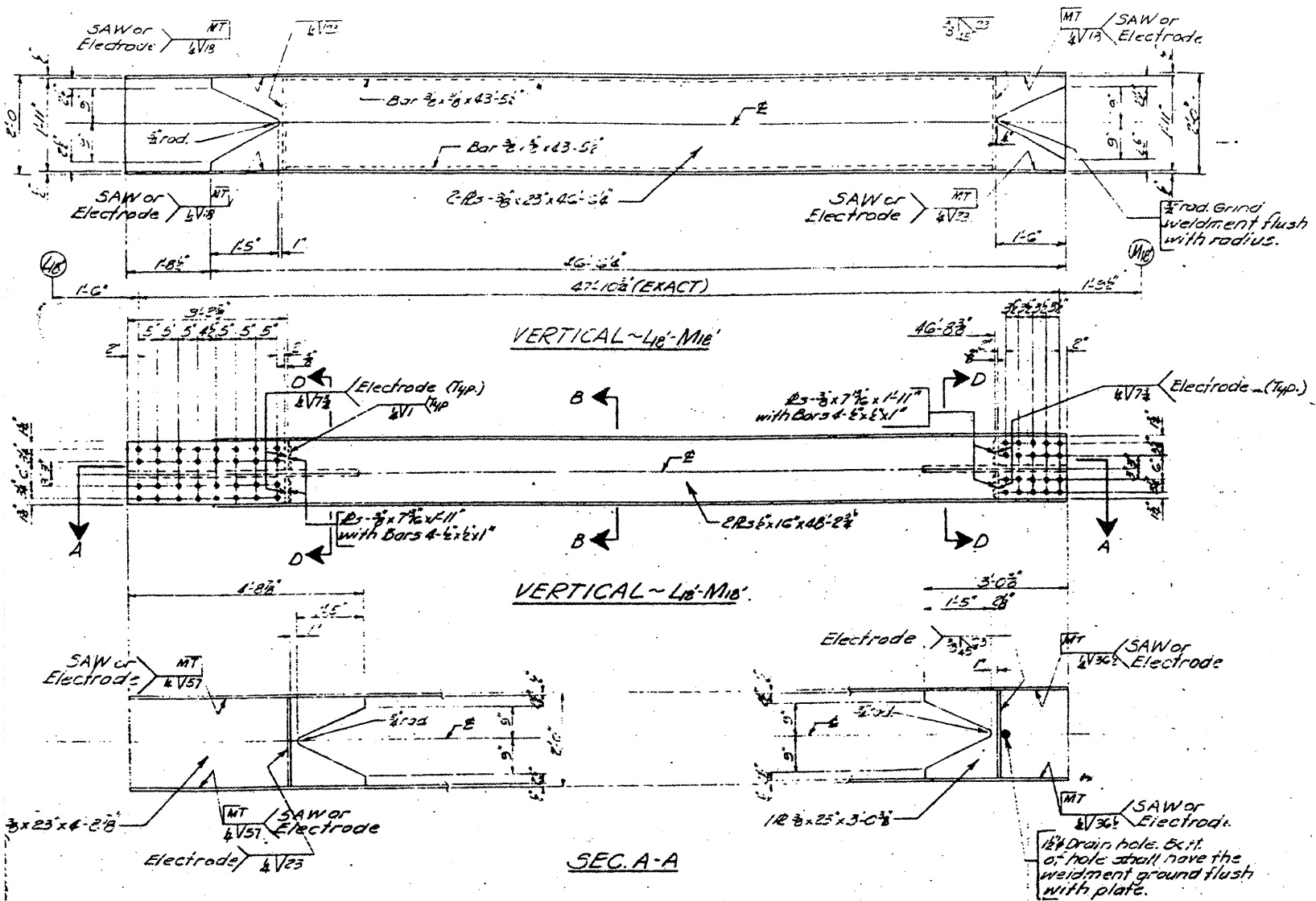
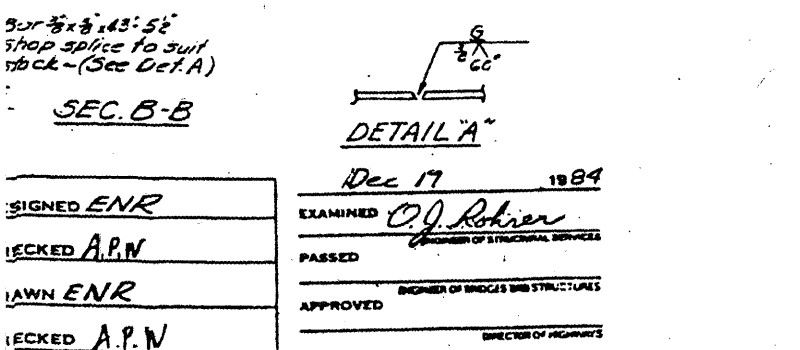


STATE OF ILLINOIS  
DEPARTMENT OF TRANSPORTATION

CONTRACT: 78040  
ROUTE: F.A.I. 57  
SECTION: (02-1B-1)P-1  
COUNTY: ALEXANDER, IL; MISSISSIPPI, MO  
SHEET 15 OF 67  
FOR INFORMATION ONLY

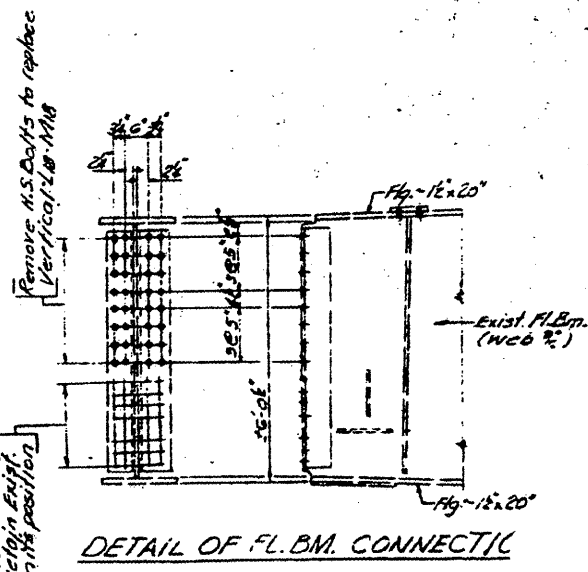
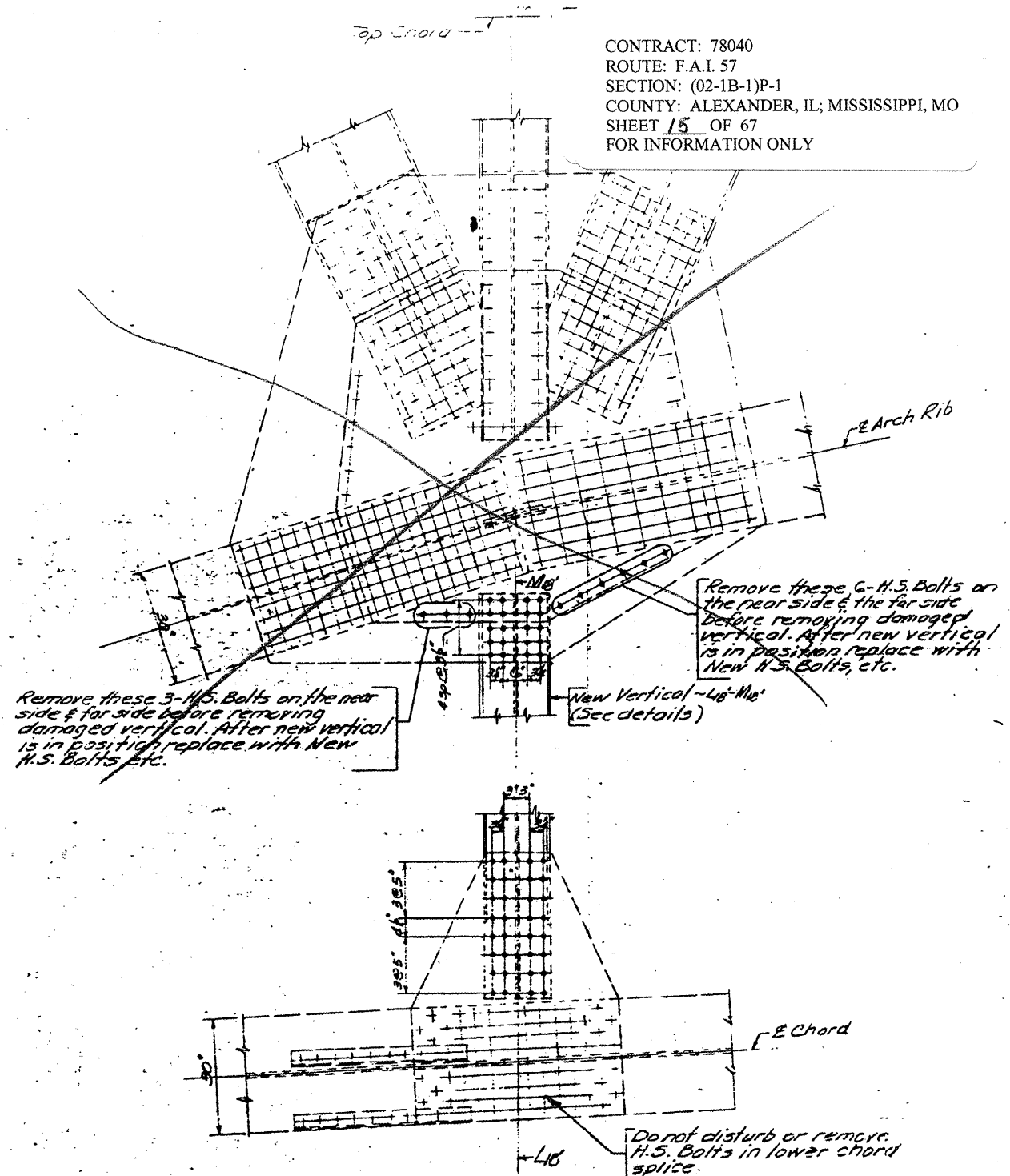


- NOTES**
1. All connection holes in vertical 40'-11 1/2" shall be subpunched or subdrilled 1 1/2" and reamed in the field to the same dia. as existing holes in gussets (1 1/2"). Use New 1" A.S. Bolts in connection.
  2. Electrodes maybe E 7028 or E 7018.
  3. Member must be square at connections.
  4. Dimensions & Details of 40'-11 1/2" are from original contract fabrication plans.



SIGNED ENR  
CHECKED A.P.N.  
AWN ENR  
CHECKED A.P.N.

Dec 17 1984  
EXAMINED C.J. Rohrer  
PASSED  
APPROVED



DETAIL OF EXISTING 40'-11 1/2" CONNECTIONS  
(Looking Upstream)

**BILL OF MATERIAL**

| Item                         | Unit | Total |
|------------------------------|------|-------|
| Reinforcing Structural Steel | Tons | 6020  |
| Erecting Structural Steel    | Lbs. | 6020  |

BRIDGE NO. 1  
STRUCTURE NO. 002-0022  
FOR INFORMATION ONLY

40'-11 1/2" MEMBER & DETAILS  
F.A.I.-57 OVER MISSISSIPPI RIVER  
F.A.I. RT. 57 SEC. 02-1B-1-I-D-1  
ALEXANDER COUNTY