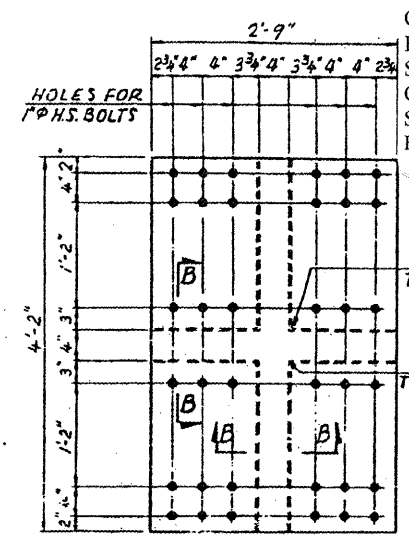
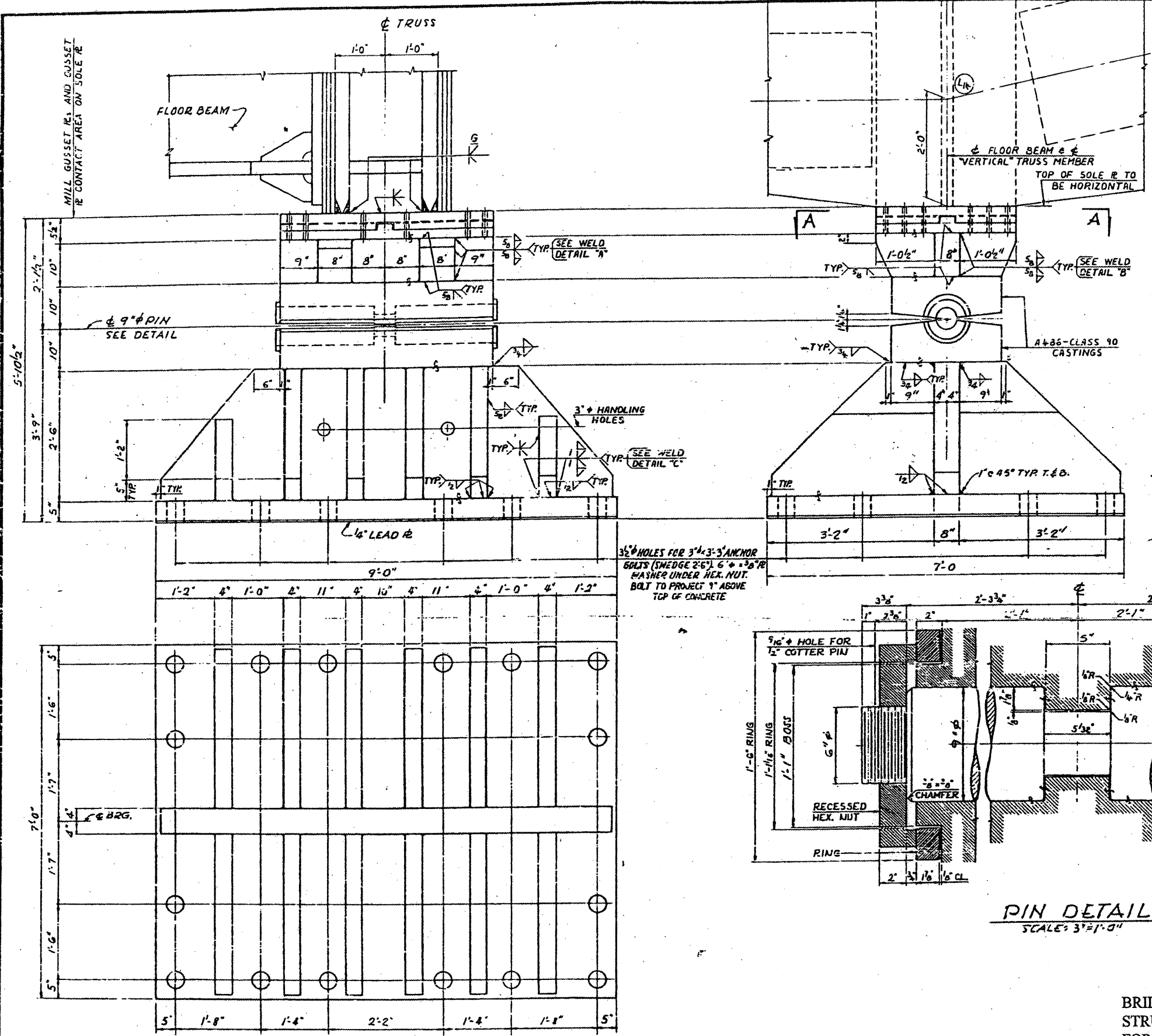
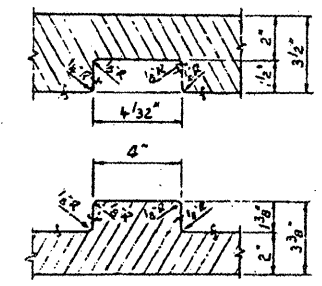


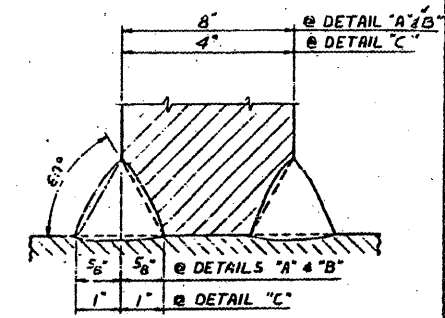
CONTRACT: 78040
 ROUTE: F.A.I. 57
 SECTION: (02-1B-1)P-1
 COUNTY: ALEXANDER, IL; MISSISSIPPI, MO
 SHEET 17 OF 67
 FOR INFORMATION ONLY



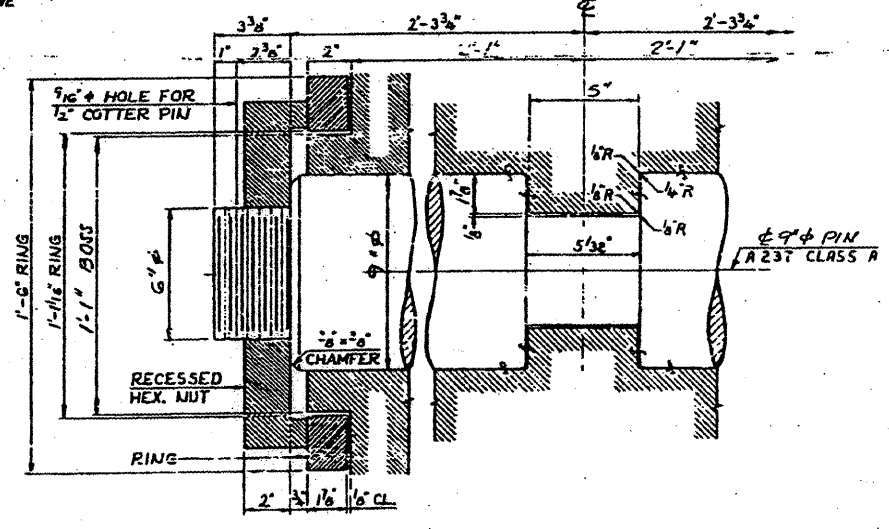
SECTION A-A
 SCALE: 1"=1'-0"



SECTION B-B
 SHOWING PLATES SEPARATED
 SCALE: 3"=1'-0"



WELD DETAILS "A", "B" & "C"



PIN DETAIL
 SCALE: 3"=1'-0"

- NOTES:
- ALL MATERIAL ASTM A36 UNLESS NOTED.
 - ALL WELDS SHALL BE BY THE SUBMERGED ARC PROCESS.
 - FINISHES PER USAS1, B46.1, PART 1.
 - ASTM A486 (CLASS 90) CASTINGS OF EQUAL STRENGTH AND SECTION MAY BE SUBSTITUTED FOR THE WELDMENTS COMPRISING THE BOLSTER AND TOP SHOE.
 - PLATES OF EQUAL STRENGTH AND SECTION MAY BE SUBSTITUTED FOR CASTINGS.

FIXED BEARING AT PIERS 12 AND 13

BRIDGE NO. 1
 STRUCTURE NO. 002-0022
 FOR INFORMATION ONLY

TRUSS BEARINGS AT PIERS 12 & 13
 F.A.I. RTE. 57 OVER THE MISSISSIPPI RIVER
 PROJECT 1-57-9(10)
 SECTION (02-1B-1)P-1
 ALEXANDER COUNTY, ILLINOIS
 MISSISSIPPI COUNTY, MISSOURI
 STA. 1141 + 84.75 TO STA. 1182 + 75.25