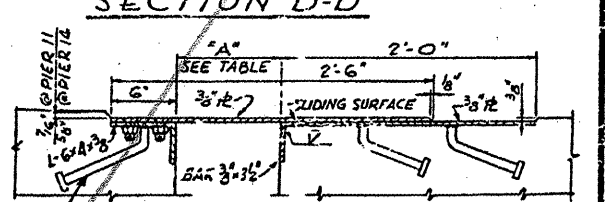
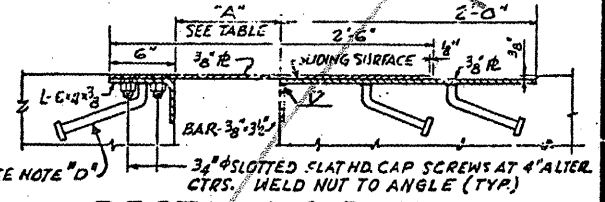
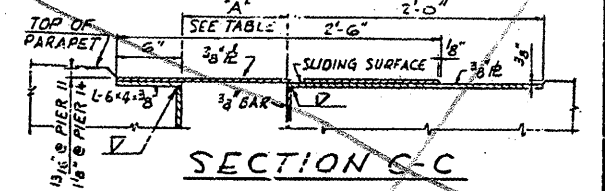


CONTRACT: 78040  
 ROUTE: F.A.I. 57  
 SECTION: (02-1B-1)P-1  
 COUNTY: ALEXANDER, IL; MISSISSIPPI, MO  
 SHEET 37 OF 67  
 FOR INFORMATION ONLY

TABLE OF "A" AND "B" DIMENSIONS

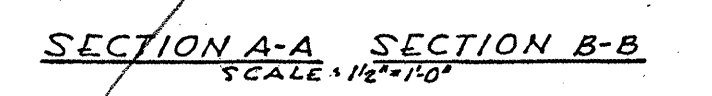
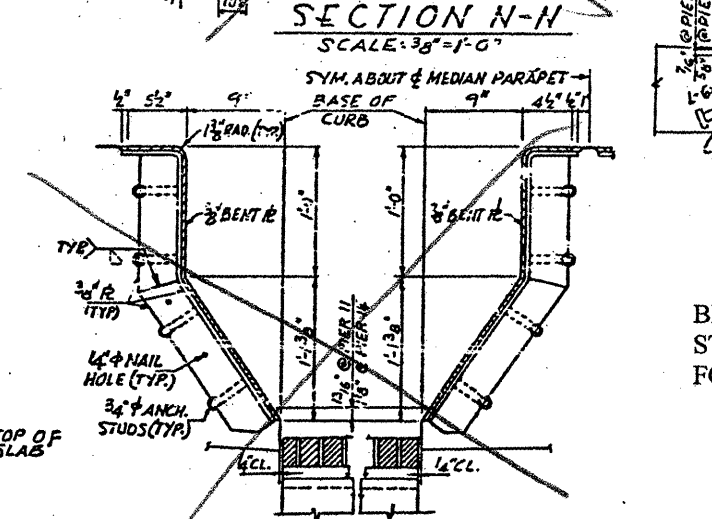
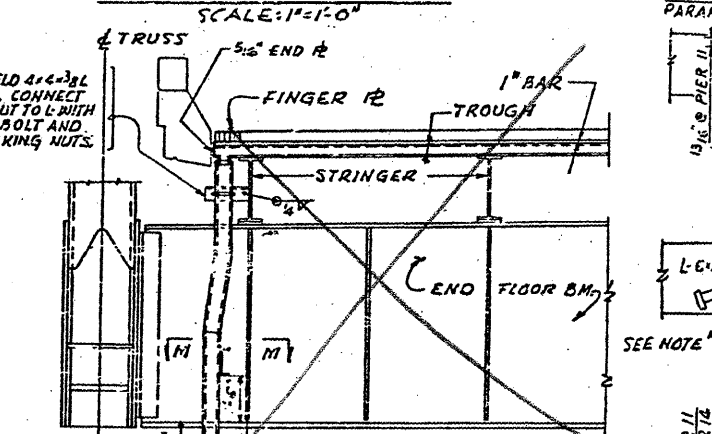
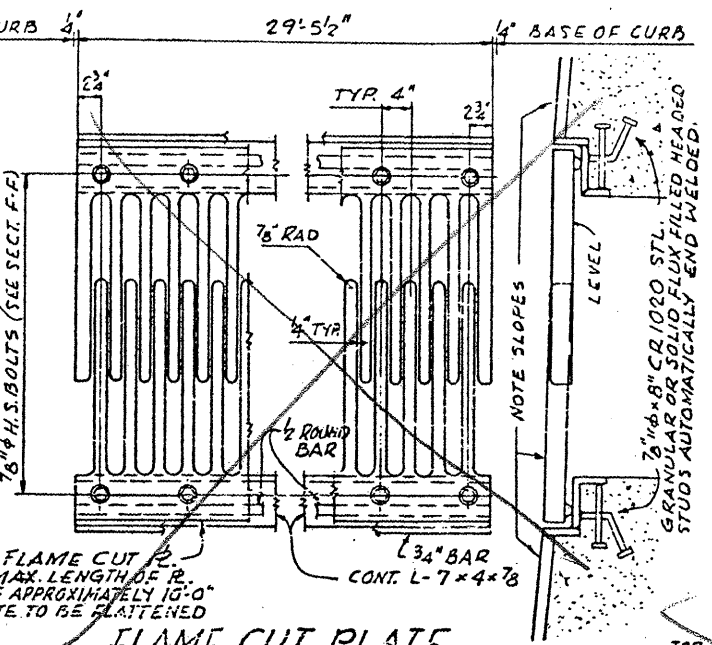
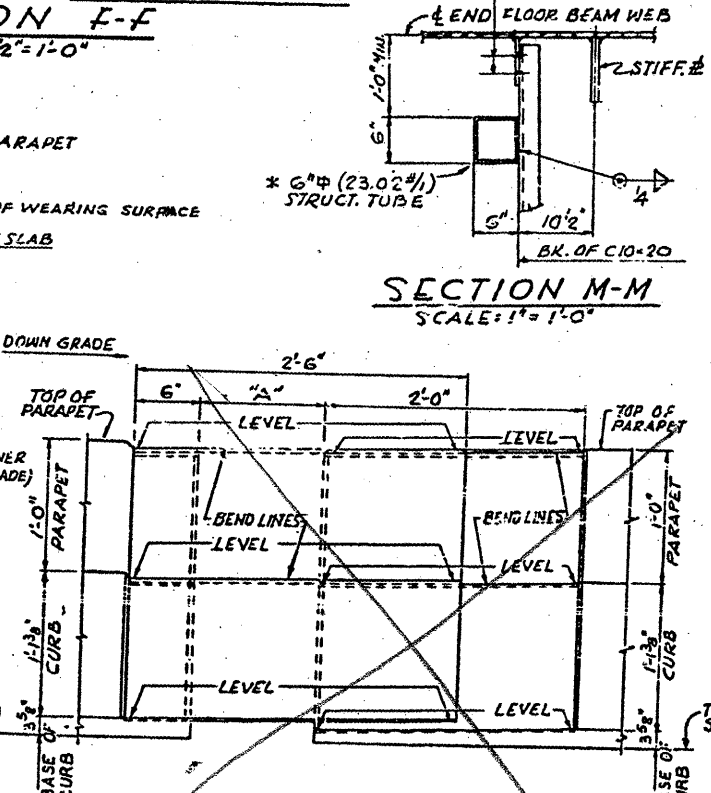
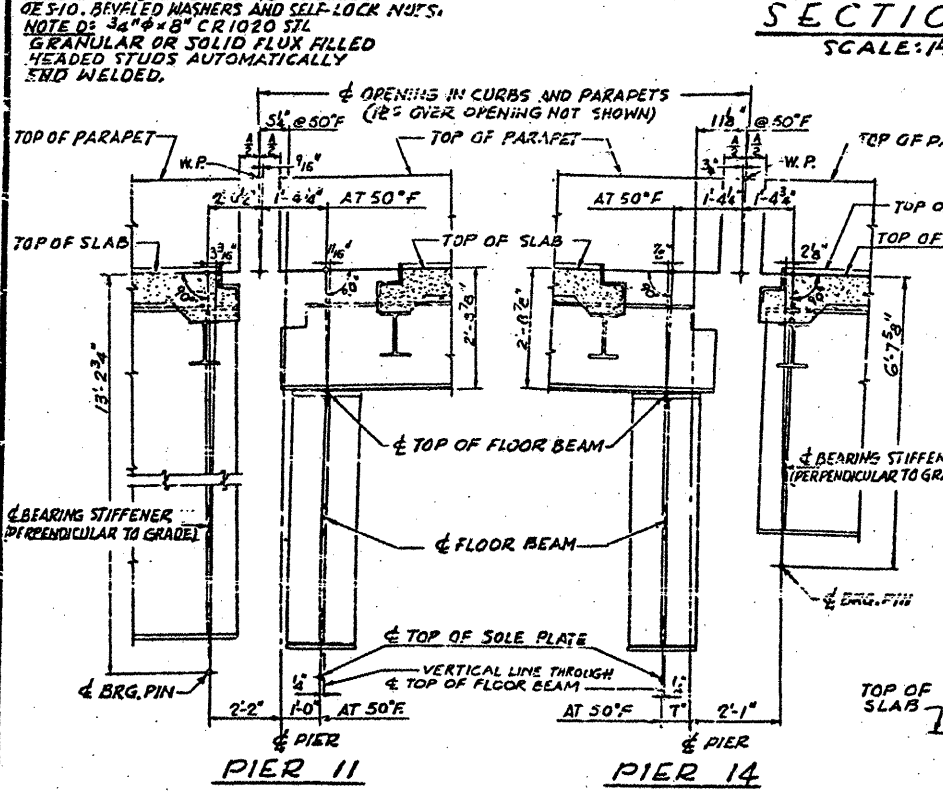
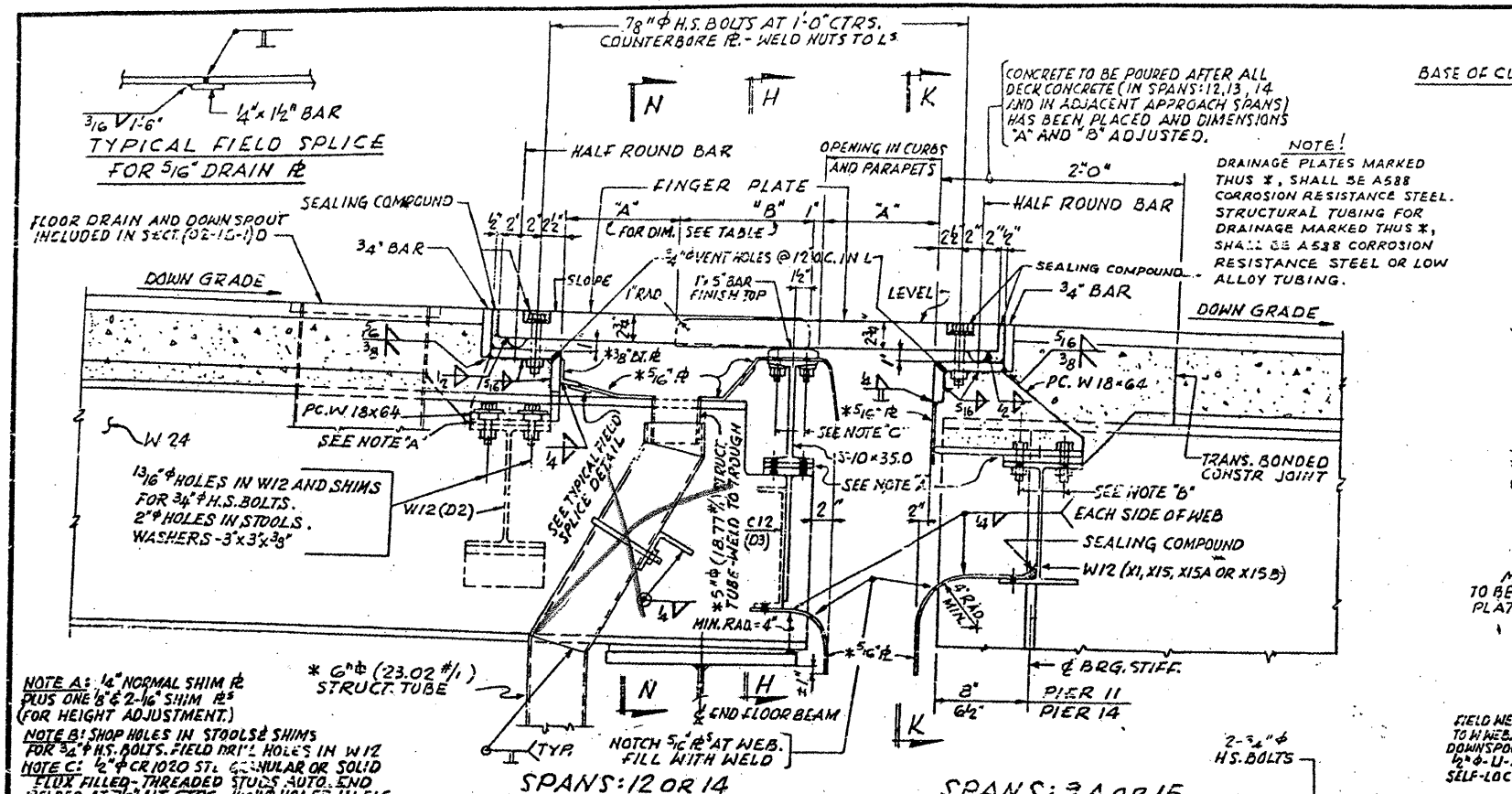
TEMP (°F)	BEFORE DECK CONCRETE IN SPANS 12, 13 & 14 IS POURED		AFTER DECK CONCRETE IN SPANS 12, 13 & 14 IS POURED	
	PIER 11	PIER 14	PIER 11	PIER 14
130	6' 5 1/2"	18' 1 1/2"	6' 2 1/2"	17' 11 1/2"
110	8' 1/4"	16' 3/4"	8' 5/16"	15' 3/4"
90	10' 3/8"	14' 10' 3/8"	10' 1/2"	13' 7/8"
70	12' 1/4"	12' 5/8"	11' 1/2"	11' 7/8"
50	14' 1/2"	10' 1/2"	13' 1/2"	9' 3/4"
30	15' 15/16"	9' 1/2"	13' 1/2"	8' 15/16"
10	17' 1/2"	7' 1/2"	15' 1/2"	6' 1/2"
-10	19' 3/4"	5' 1/2"	17' 1/2"	4' 1/2"
-30	21' 1/2"	3' 1/2"	19' 1/2"	2' 1/2"

\* TEMPERATURE AT TIME OF ADJUSTMENT OF EXPANSION GUARD



BRIDGE NO 1  
 STRUCTURE NO. 002-0022  
 FOR INFORMATION ONLY

EXPANSION GUARD - PIER 11 & 14  
 F.A.I. RTE. 57 OVER THE MISSISSIPPI RIVER  
 PROJECT 1-57-5  
 SECTION 02-1B-1P  
 ALEXANDER COUNTY, ILLINOIS  
 MISSISSIPPI COUNTY, MISSOURI  
 STA. 1141 + 84.75 TO STA. 1182 + 75.25



ALFRED BENESCH & COMPANY  
 CONSULTING ENGINEERS  
 10 S. WABASH AVE. CHICAGO, ILLINOIS