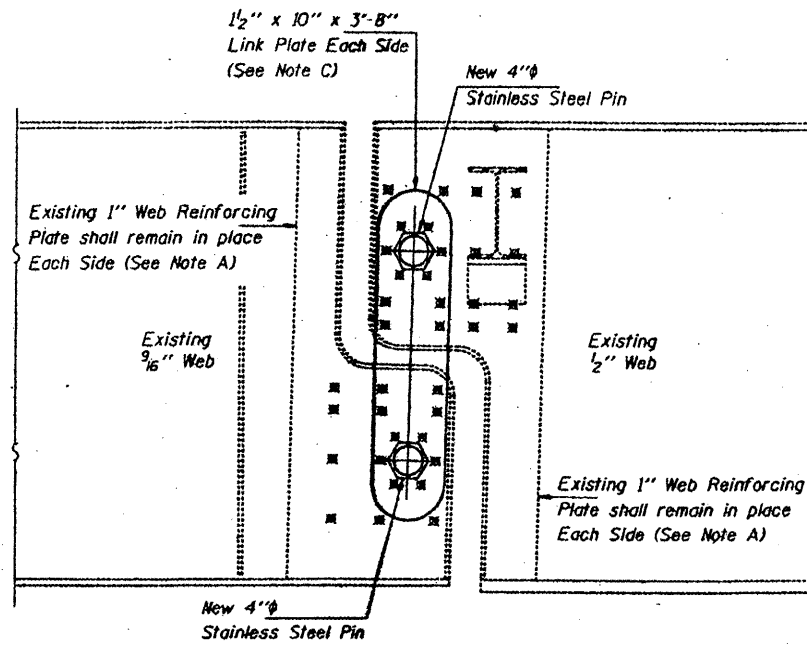
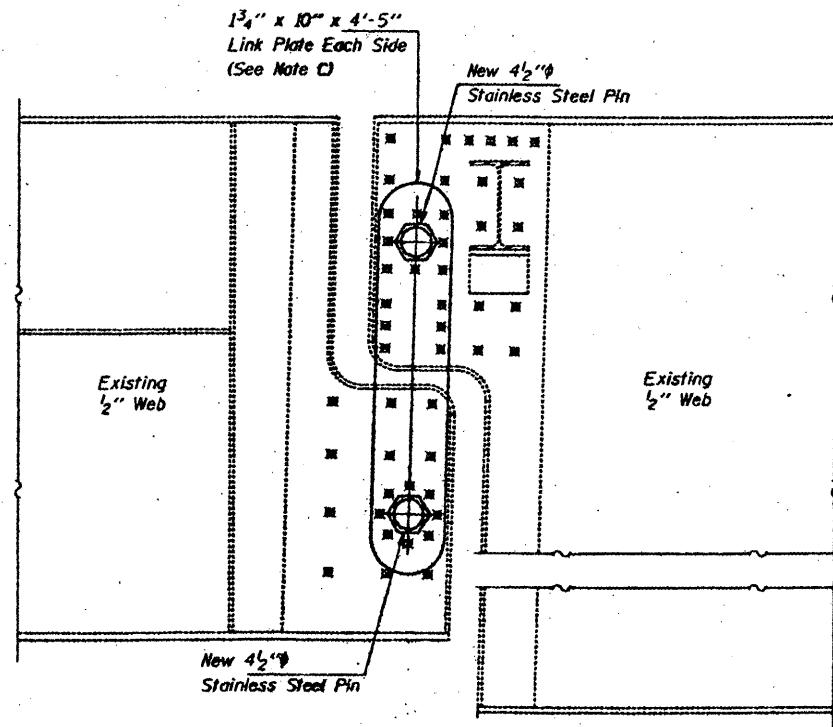


STATE OF ILLINOIS
DEPARTMENT OF TRANSPORTATION

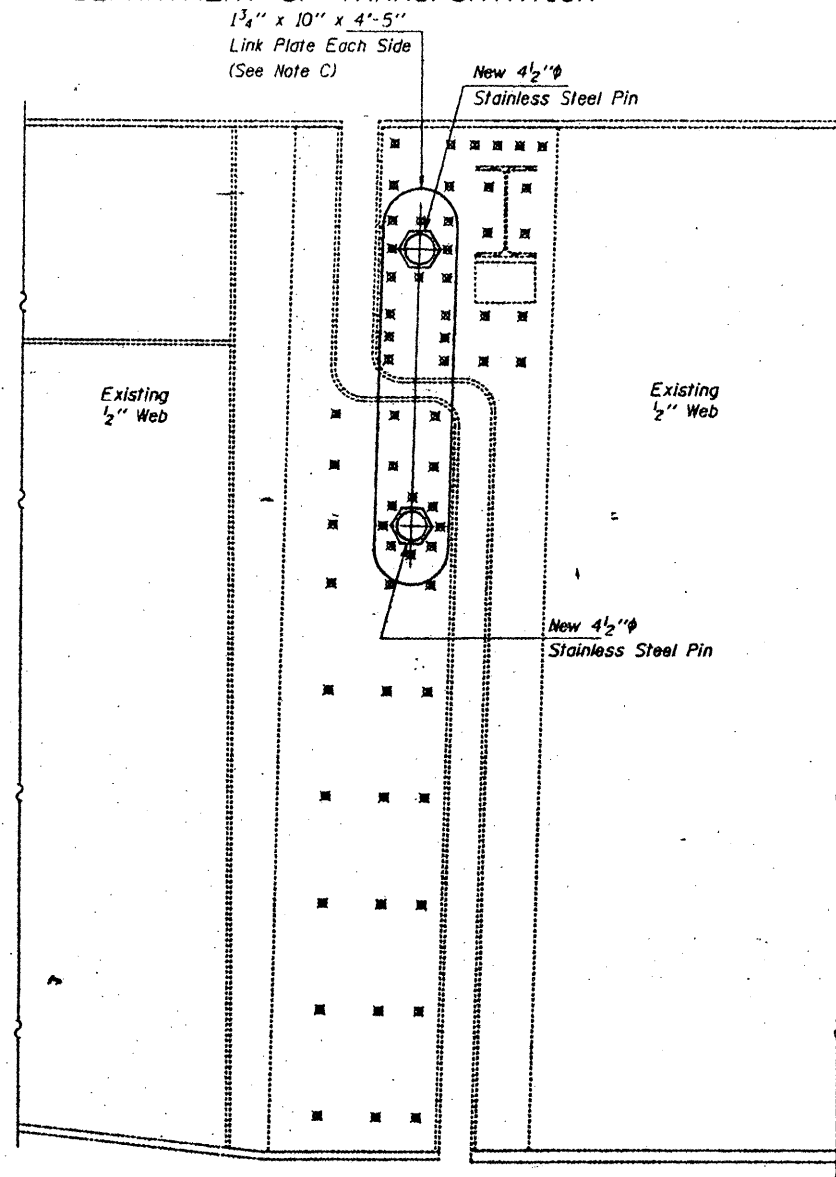
CONTRACT: 78040
ROUTE: F.A.I. 57
SECTION: (02-1B-1)P-1
COUNTY: ALEXANDER, IL; MISSISSIPPI, MO
SHEET 53 OF 67
FOR INFORMATION ONLY



ELEVATION AT NEW PIN ASSEMBLY SPAN 4



ELEVATION AT NEW PIN ASSEMBLY SPAN 7 GIRDERS 2 THRU 6



ELEVATION AT NEW PIN ASSEMBLY SPAN 7 GIRDERS 1 AND 7

Note A:
Existing welds penetrant or mag shall be identified and reported to the Bureau of Bridges and Structures for further disposition. Clean and paint before installing new link plates.

Note B:
Bore diameter for bushing in link plate, existing webs and web reinforcement plates shall correspond to bushing manufacturer's allowable tolerances for proper functioning. Hole diameter may be adjusted to allow use of stock bushings.

Note C:
Inside face of new link plates shall receive first field coat in shop. The primer shall pass the M.E.K. Rub Test before the first field coat is applied.

Note D:
Actual bushing thickness per manufacturer's specifications. 1/4 inch is approximate. Bushings shall be a self lubricating filament wound epoxy matrix backed Duralon Bearing, metal backed Fiber Glide Bearing or equivalent. No primer or grease shall be allowed on bushings. Bushings shall be suitable for dynamic loads of 20,000 psi.

Note E:
Tighten inside nuts to bring all bushings into firm contact, then back off 1/4 turn and tighten outer nuts and set bolts.

Note F:
Apply 3/8 inch bead to face of the web reinforcing plates approximately 1/2 inch from bushing immediately before installing new link plates. Place sealant around nuts after installation. Sealant shall be suitable for prolonged exterior exposure without losing flexibility or adhesion to painted steel surfaces. Proposed products shall be subject to Department's acceptance based on documented testing or other evidence.

Note G:
Welds shall be inspected for cracks using liquid dye penetrant or magnetic particle testing. Any cracks that are found that cannot be removed by grinding approximately 1/4 inch shall be identified and reported to the Bureau of Bridges and Structures for further disposition. Clean and paint before installing new link plates.

Notes: For Pin and Link Plate Details see sheet 3 of 13.

DESIGNED	VHV
CHECKED	CME
DRAWN	Paul Summer
CHECKED	VHV CME

FEBRUARY 13, 1998

EXAMINED *Joseph E. Ham*
ENGINEER OF STRUCTURAL SERVICES
PASSED
ENGINEER OF BRIDGES AND STRUCTURES

BRIDGE NO. 1
STRUCTURE NO. 002-0022
FOR INFORMATION ONLY

PIN AND LINK PLATE REPLACEMENT
SPANS 4 AND 7
F.A.I. ROUTE 57 SEC. 02-1B-1
ALEXANDER COUNTY
STA. 1168+50
STR. No. 002-0022