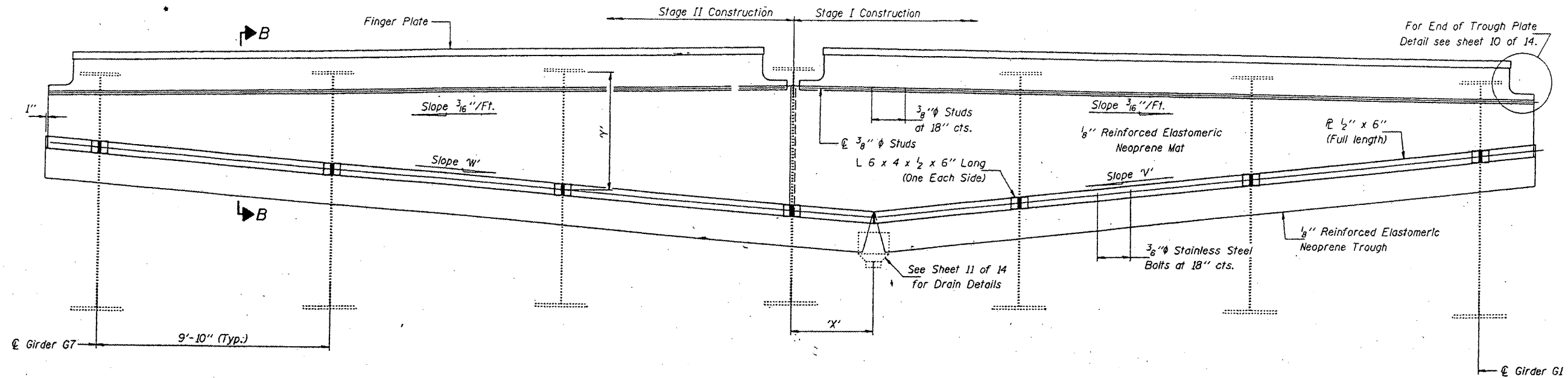
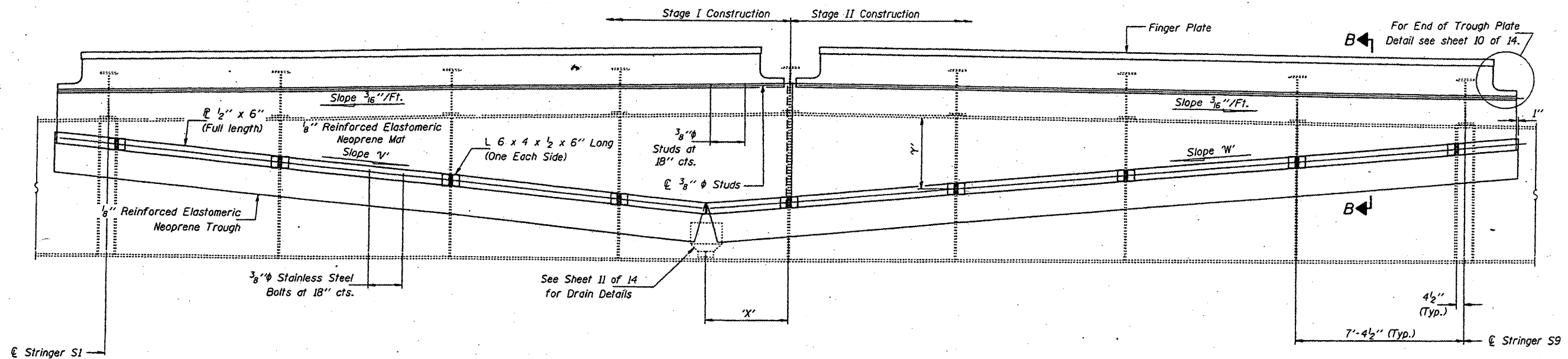


STATE OF ILLINOIS
DEPARTMENT OF TRANSPORTATION

CONTRACT: 78040
ROUTE: F.A.I. 57
SECTION: (02-1B-1)P-1
COUNTY: ALEXANDER, IL; MISSISSIPPI, MO
SHEET 64 OF 67
FOR INFORMATION ONLY



ELEVATION - APPROACH SPAN
(Looking North)



ELEVATION - TRUSS SPAN
(Looking South)

DESIGNED	P.S.J.	FEBRUARY 4, 2002
CHECKED	A.T.H.	EXAMINED <i>John A. Morris</i> ENGINEER OF STRUCTURAL SERVICES
DRAWN	John F. Schneller Jr.	PASSED
CHECKED	P.S.J. A.T.H.	ENGINEER OF BRIDGES AND STRUCTURES

Notes:
Showing Pier 11; Pier 14 similar.
For Section B-B see sheet 6 of 14.
For slopes 'V' & 'W' and dimensions 'X' & 'Y', see Sheet 10 of 14.
Dimension 'Y' is measured from the underside of the top flange of the girders (Approach Spans) or Floor Beam (Truss Spans) to the center of the connection for the $\frac{1}{2}$ " x 6" P.

BRIDGE NO. 1
STRUCTURE NO. 002-0022
FOR INFORMATION ONLY

TROUGH DETAILS - PIER 11 & 14
F.A.I. 57 OVER MISSISSIPPI RIVER
ALEXANDER COUNTY
S.N. 002-0022