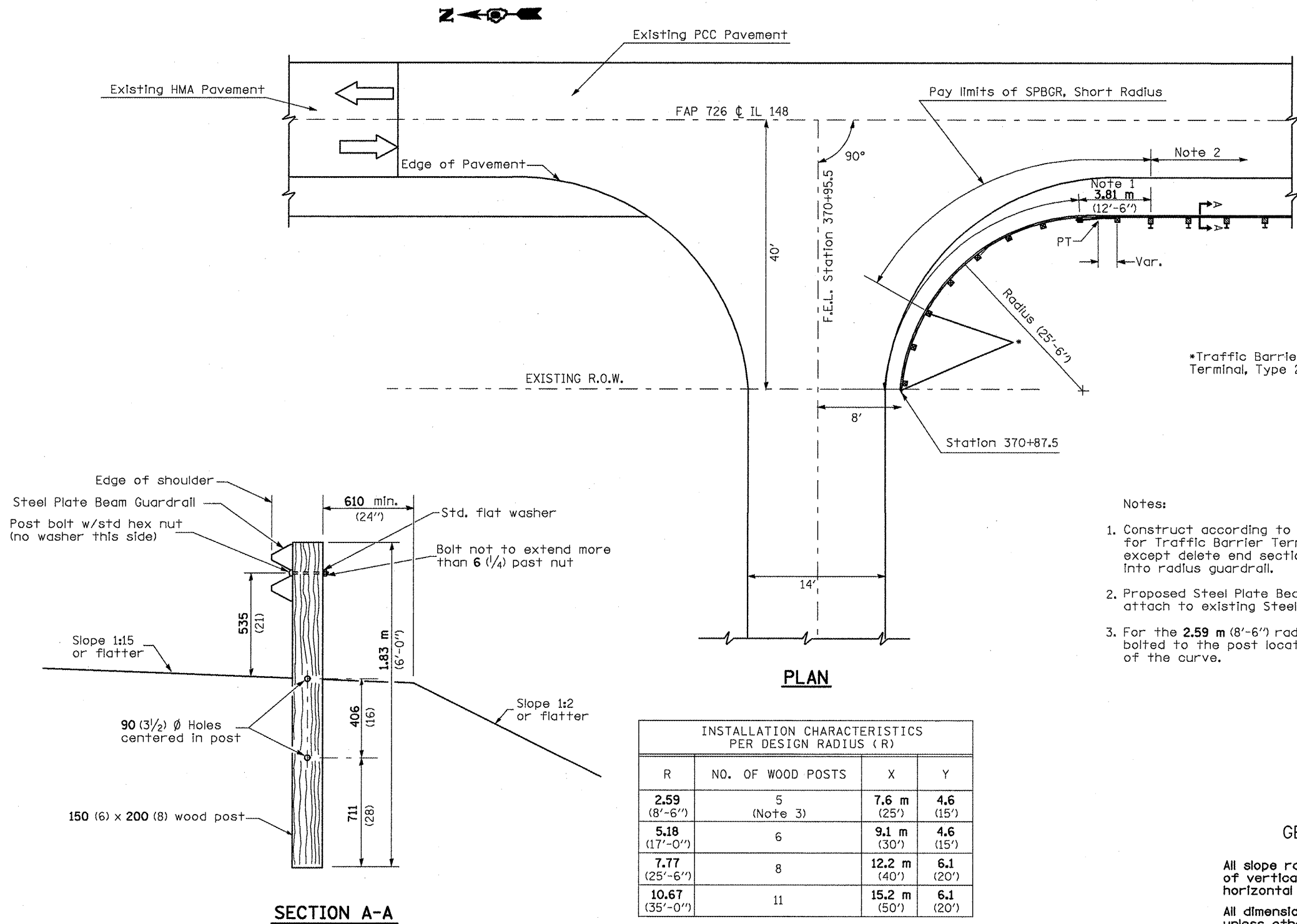


STEEL PLATE BEAM GUARDRAIL, SHORT RADIUS DETAIL



*Traffic Barrier Terminal, Type 2

Notes:

1. Construct according to Standard 631011 for Traffic Barrier Terminal Type 2, except delete end section and splice into radius guardrail.
2. Proposed Steel Plate Beam Guardrail Type A to attach to existing Steel Plate Beam Guardrail Type A
3. For the 2.59 m (8'-6") radius, the rail is not bolted to the post located at the midpoint of the curve.

INSTALLATION CHARACTERISTICS PER DESIGN RADIUS (R)

R	NO. OF WOOD POSTS	X	Y
2.59 (8'-6")	5 (Note 3)	7.6 m (25')	4.6 (15')
5.18 (17'-0")	6	9.1 m (30')	4.6 (15')
7.77 (25'-6")	8	12.2 m (40')	6.1 (20')
10.67 (35'-0")	11	15.2 m (50')	6.1 (20')

GENERAL NOTES

All slope ratios are expressed as units of vertical displacement to units of horizontal displacement (V:H).

All dimensions are in millimeters (Inches) unless otherwise shown.

Cut Steel Plate Beam Guardrail so that the Traffic Barrier Terminal, Type 2 stays within existing R.O.W.

Wood posts in radius of shall have a spacing of no greater than 6'-3".

TO BE USED:
SN 041-9900 (NW QUADRANT)

FILE NAME = c:\projects\78844\78844-miso.dgn	USER NAME = eolam	DESIGNED -	REVISED -	STATE OF ILLINOIS DEPARTMENT OF TRANSPORTATION	STEEL PLATE BEAM GUARDRAIL, SHORT RADIUS DETAIL	F.A.P. RTE.	SECTION	COUNTY	TOTAL SHEETS	SHEET NO.	
		DRAWN -	REVISED -			726	(119,120)RS-3	JEFFERSON	16	15	
		CHECKED -	REVISED -			CONTRACT NO. 78044					
		DATE -	REVISED -			SCALE: NONE	SHEET NO. 1 OF 1 SHEETS	STA.	TO STA.	FED. ROAD DIST. NO.	ILLINOIS FED. AID PROJECT