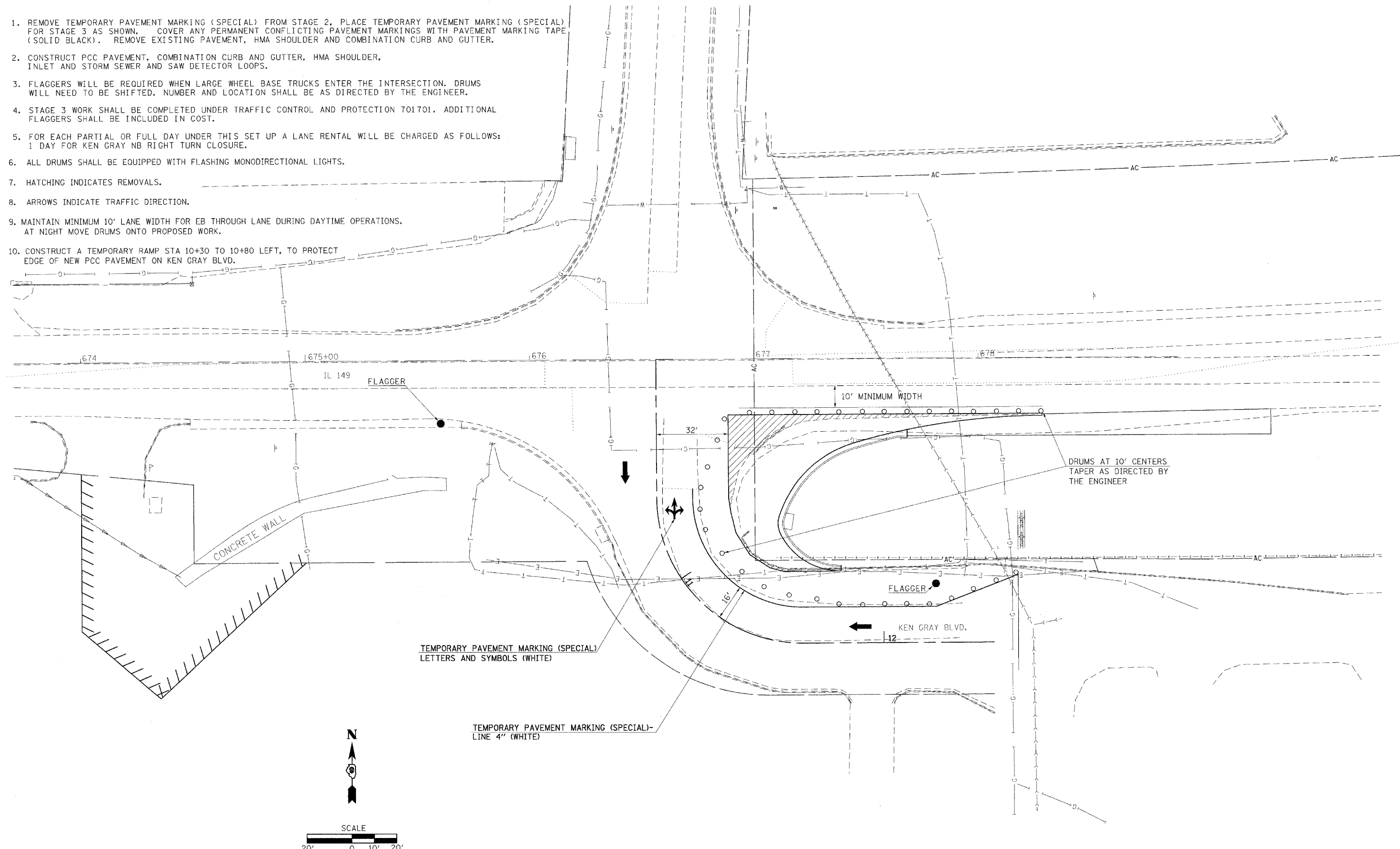


STAGE 3

1. REMOVE TEMPORARY PAVEMENT MARKING (SPECIAL) FROM STAGE 2, PLACE TEMPORARY PAVEMENT MARKING (SPECIAL) FOR STAGE 3 AS SHOWN. COVER ANY PERMANENT CONFLICTING PAVEMENT MARKINGS WITH PAVEMENT MARKING TAPE (SOLID BLACK). REMOVE EXISTING PAVEMENT, HMA SHOULDER AND COMBINATION CURB AND GUTTER.
2. CONSTRUCT PCC PAVEMENT, COMBINATION CURB AND GUTTER, HMA SHOULDER, INLET AND STORM SEWER AND SAW DETECTOR LOOPS.
3. FLAGGERS WILL BE REQUIRED WHEN LARGE WHEEL BASE TRUCKS ENTER THE INTERSECTION. DRUMS WILL NEED TO BE SHIFTED. NUMBER AND LOCATION SHALL BE AS DIRECTED BY THE ENGINEER.
4. STAGE 3 WORK SHALL BE COMPLETED UNDER TRAFFIC CONTROL AND PROTECTION 701701. ADDITIONAL FLAGGERS SHALL BE INCLUDED IN COST.
5. FOR EACH PARTIAL OR FULL DAY UNDER THIS SET UP A LANE RENTAL WILL BE CHARGED AS FOLLOWS: 1 DAY FOR KEN GRAY NB RIGHT TURN CLOSURE.
6. ALL DRUMS SHALL BE EQUIPPED WITH FLASHING MONODIRECTIONAL LIGHTS.
7. HATCHING INDICATES REMOVALS.
8. ARROWS INDICATE TRAFFIC DIRECTION.
9. MAINTAIN MINIMUM 10' LANE WIDTH FOR EB THROUGH LANE DURING DAYTIME OPERATIONS. AT NIGHT MOVE DRUMS ONTO PROPOSED WORK.
10. CONSTRUCT A TEMPORARY RAMP STA 10+30 TO 10+80 LEFT, TO PROTECT EDGE OF NEW PCC PAVEMENT ON KEN GRAY BLVD.



FILE NAME = c:\projects\78055\d978055_sht_p1nprf.dgn	USER NAME = naasdp	DESIGNED -	REVISED -	STATE OF ILLINOIS DEPARTMENT OF TRANSPORTATION	CONSTRUCTION STAGING - STAGE 3				F.A. RTE. 873	SECTION (28-5) TS-3, N-1	COUNTY FRANKLIN	TOTAL SHEETS 38	SHEET NO. 14
PLOT SCALE = 20.0000' / IN.	CHECKED -	REVISED -	REVISED -		SCALE: 20	SHEET NO.	OF	SHEETS	STA.	TO STA.	FED. ROAD DIST. NO.	ILLINOIS	FED. AID PROJECT
PLOT DATE = 3/18/2008	DATE -	REVISED -	REVISED -		CONTRACT NO. 78055								
					CONTRACT NO. 78055								