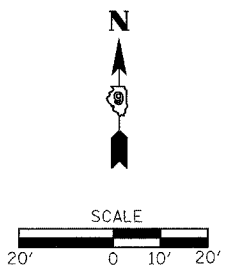
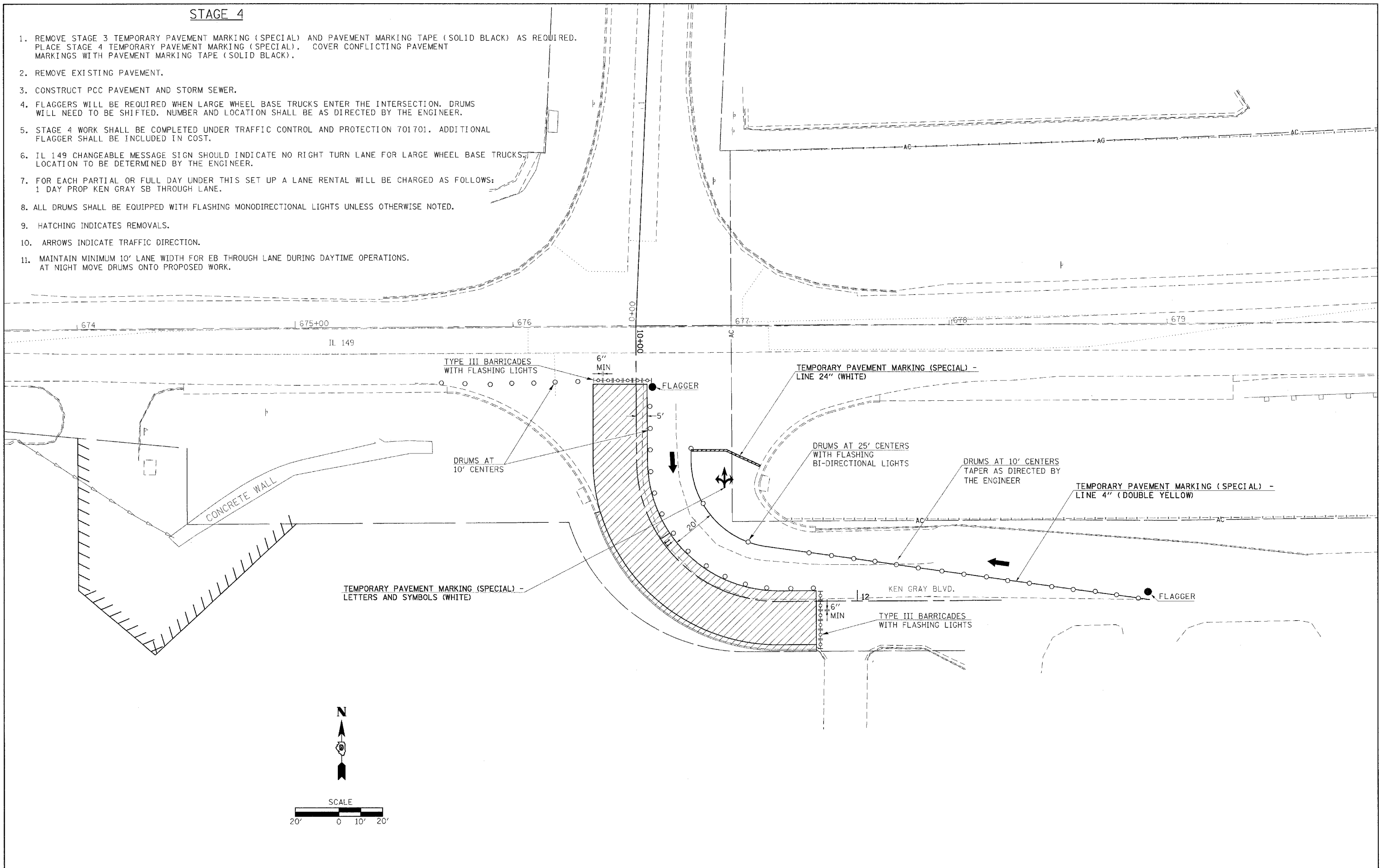


STAGE 4

1. REMOVE STAGE 3 TEMPORARY PAVEMENT MARKING (SPECIAL) AND PAVEMENT MARKING TAPE (SOLID BLACK) AS REQUIRED. PLACE STAGE 4 TEMPORARY PAVEMENT MARKING (SPECIAL). COVER CONFLICTING PAVEMENT MARKINGS WITH PAVEMENT MARKING TAPE (SOLID BLACK).
2. REMOVE EXISTING PAVEMENT.
3. CONSTRUCT PCC PAVEMENT AND STORM SEWER.
4. FLAGGERS WILL BE REQUIRED WHEN LARGE WHEEL BASE TRUCKS ENTER THE INTERSECTION. DRUMS WILL NEED TO BE SHIFTED. NUMBER AND LOCATION SHALL BE AS DIRECTED BY THE ENGINEER.
5. STAGE 4 WORK SHALL BE COMPLETED UNDER TRAFFIC CONTROL AND PROTECTION 701701. ADDITIONAL FLAGGER SHALL BE INCLUDED IN COST.
6. IL 149 CHANGEABLE MESSAGE SIGN SHOULD INDICATE NO RIGHT TURN LANE FOR LARGE WHEEL BASE TRUCKS. LOCATION TO BE DETERMINED BY THE ENGINEER.
7. FOR EACH PARTIAL OR FULL DAY UNDER THIS SET UP A LANE RENTAL WILL BE CHARGED AS FOLLOWS:
1 DAY PROP KEN GRAY SB THROUGH LANE.
8. ALL DRUMS SHALL BE EQUIPPED WITH FLASHING MONODIRECTIONAL LIGHTS UNLESS OTHERWISE NOTED.
9. HATCHING INDICATES REMOVALS.
10. ARROWS INDICATE TRAFFIC DIRECTION.
11. MAINTAIN MINIMUM 10' LANE WIDTH FOR EB THROUGH LANE DURING DAYTIME OPERATIONS. AT NIGHT MOVE DRUMS ONTO PROPOSED WORK.



FILE NAME = c:\projects\78055\4978055_sht.p\prf.dgn	USER NAME = nassdp	DESIGNED -	REVISED -	STATE OF ILLINOIS DEPARTMENT OF TRANSPORTATION	CONSTRUCTION STAGING - STAGE 4			F.A. RTE.	SECTION	COUNTY	TOTAL SHEETS	SHEET NO.		
		DRAWN -	REVISED -		SCALE: 20	SHEET NO.	OF SHEETS	STA.	TO STA.	873	(28-5) TS-3, N-1	FRANKLIN	38	15
		CHECKED -	REVISED -							CONTRACT NO. 78055				
		DATE -	REVISED -							FED. ROAD DIST. NO.	ILLINOIS	FED. AID PROJECT		