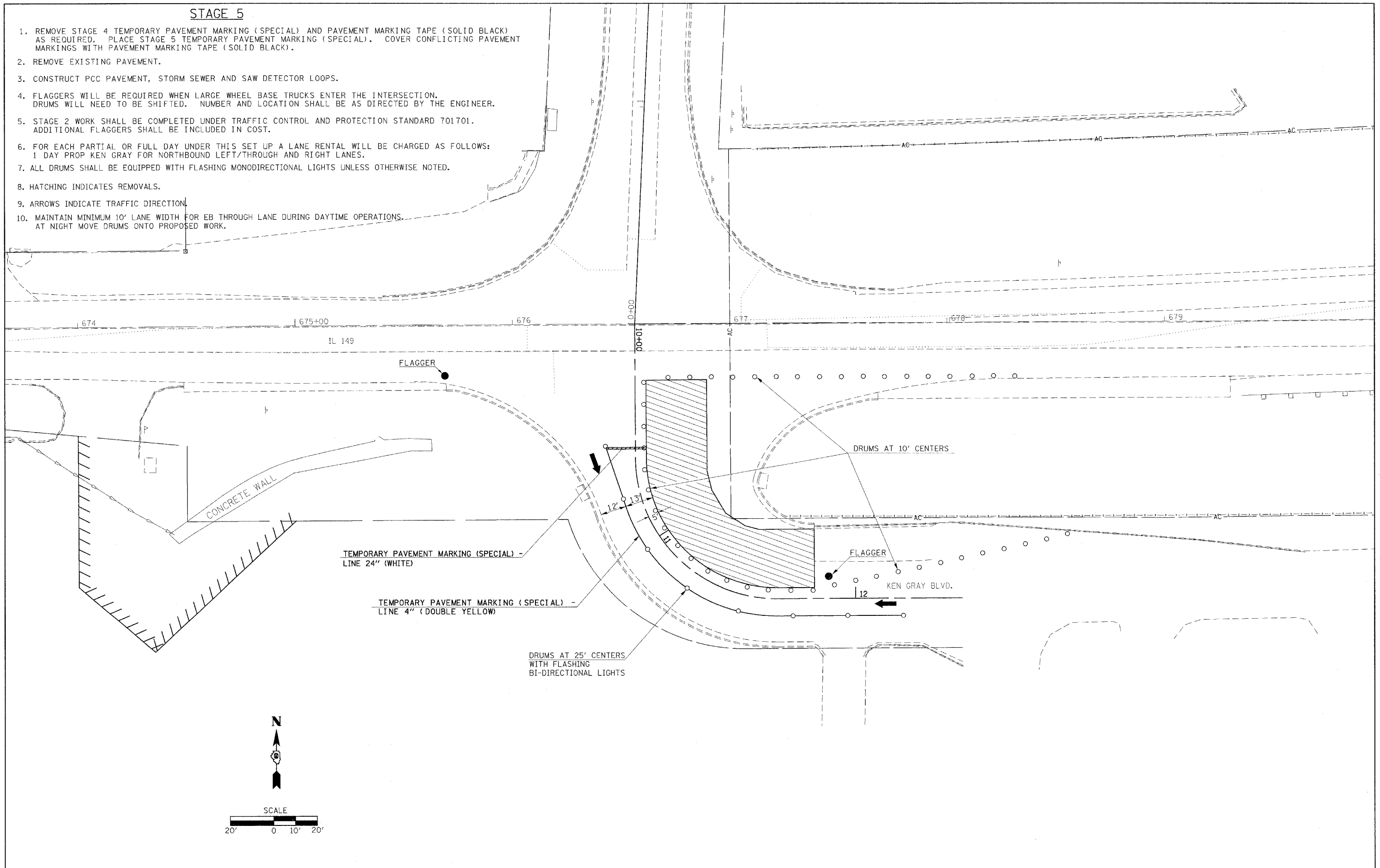


STAGE 5

1. REMOVE STAGE 4 TEMPORARY PAVEMENT MARKING (SPECIAL) AND PAVEMENT MARKING TAPE (SOLID BLACK) AS REQUIRED. PLACE STAGE 5 TEMPORARY PAVEMENT MARKING (SPECIAL). COVER CONFLICTING PAVEMENT MARKINGS WITH PAVEMENT MARKING TAPE (SOLID BLACK).
2. REMOVE EXISTING PAVEMENT.
3. CONSTRUCT PCC PAVEMENT, STORM SEWER AND SAW DETECTOR LOOPS.
4. FLAGGERS WILL BE REQUIRED WHEN LARGE WHEEL BASE TRUCKS ENTER THE INTERSECTION. DRUMS WILL NEED TO BE SHIFTED. NUMBER AND LOCATION SHALL BE AS DIRECTED BY THE ENGINEER.
5. STAGE 2 WORK SHALL BE COMPLETED UNDER TRAFFIC CONTROL AND PROTECTION STANDARD 701701. ADDITIONAL FLAGGERS SHALL BE INCLUDED IN COST.
6. FOR EACH PARTIAL OR FULL DAY UNDER THIS SET UP A LANE RENTAL WILL BE CHARGED AS FOLLOWS:
1 DAY PROP KEN GRAY FOR NORTHBOUND LEFT/THROUGH AND RIGHT LANES.
7. ALL DRUMS SHALL BE EQUIPPED WITH FLASHING MONODIRECTIONAL LIGHTS UNLESS OTHERWISE NOTED.
8. HATCHING INDICATES REMOVALS.
9. ARROWS INDICATE TRAFFIC DIRECTION.
10. MAINTAIN MINIMUM 10' LANE WIDTH FOR EB THROUGH LANE DURING DAYTIME OPERATIONS. AT NIGHT MOVE DRUMS ONTO PROPOSED WORK.



FILE NAME = c:\projects\78055\d978055_shts\plnprf.dwg	USER NAME = noasdp	DESIGNED -	REVISED -	STATE OF ILLINOIS DEPARTMENT OF TRANSPORTATION	CONSTRUCTION STAGING - STAGE 5				F.A. RTE. 873	SECTION (28-5) TS-3, N-1	COUNTY FRANKLIN	TOTAL SHEETS 38	SHEET NO. 16
	PLOT SCALE = 20,000' / IN.	DRAWN -	REVISED -		SCALE: 20	SHEET NO.	OF	SHEETS	STA.	TO STA.	CONTRACT NO. 78055		
	PLOT DATE = 3/18/2008	CHECKED -	REVISED -		FED. ROAD DIST. NO. ILLINOIS FED. AID PROJECT								
		DATE -	REVISED -										