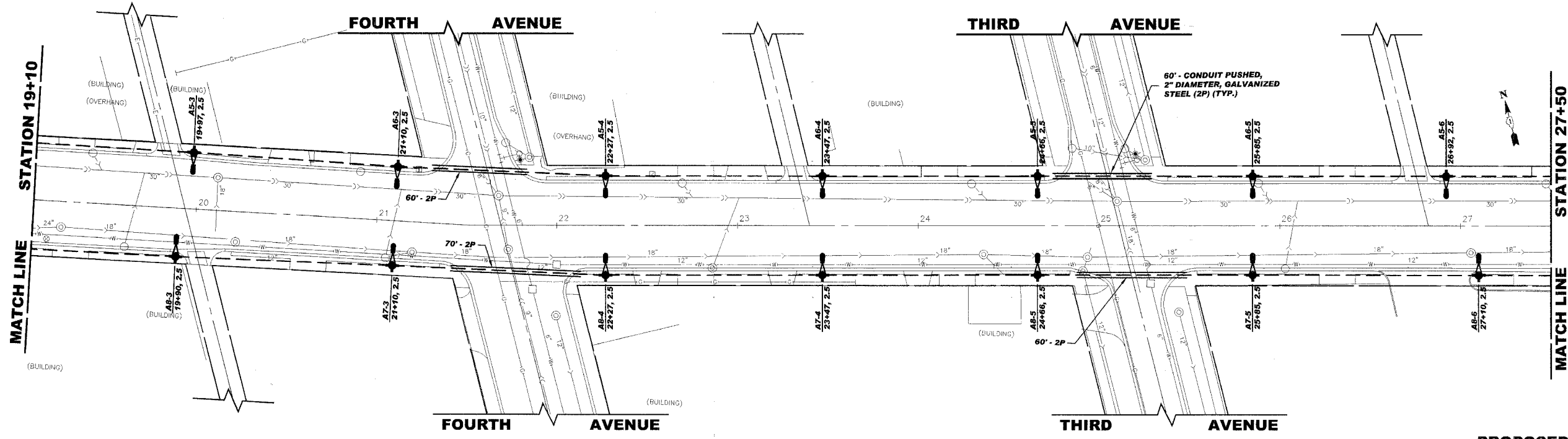


EXISTING TOPGRAPHY

LEGEND OF SYMBOLS	
	EXISTING LIGHT POLE AND FIXTURE
	PROPOSED 30' MH POLE WITH 6' SCROLL ARM & 150 WATT METAL HALIDE LAMP AND 70 WATT METAL HALIDE LAMP WITH 3' ARM AT 16' MH
	PROPOSED 30' MH POLE WITH 6' SCROLL ARM & 175 WATT METAL HALIDE LAMP AND 70 WATT METAL HALIDE LAMP WITH 3' ARM AT 16' MH
	PROPOSED 30' MH POLE WITH 6' SCROLL ARM & 400 WATT METAL HALIDE LAMP AND 70 WATT METAL HALIDE LAMP WITH 3' ARM AT 16' MH
	PROPOSED CONTROL CENTER
	EXISTING OVERHEAD STREET LIGHT WIRING
	PROPOSED UNIT DUCT WITH 3-1/2" No. 4 & 1-1/2" No. 6 GROUND, 600V (XLP-(TYPE USE)), 1 1/4" DIAMETER OR AS NOTED, BORED & PULLED OR AS NOTED
	PROPOSED GALVANIZED STEEL CONDUIT IN TRENCH OR PUSHED AS NOTED
	CONTROLLER IDENTIFICATION (TYP.)
	CIRCUIT NUMBER (TYP.)
	POLE NUMBER (TYP.)
	SET BACK FROM BACK OF CURB (TYP.)
	STATION NUMBER (TYP.)



PROPOSED IMPROVEMENTS

Drawing File: W:\Projects\55006153 - Lake St. Streetscape\Lake St. Streetscape.dwg Feb 20, 2008 - 4:30pm



◆ Civil Engineers
 ◆ Municipal Consultants
 ◆ Established 1911

9933 Roosevelt Road
 Westchester, Illinois 60154-2780
 Phone: 708/865-0300
 Fax: 708/865-1212

**LAKE STREET STREETSCAPE
 VILLAGE OF MAYWOOD, ILLINOIS**

LIGHTING PLAN

SCALE:	1"=30'	SHEET	14
DRAWN BY:	LEV ECW		
BOOK NO.:	SDR33/1480/1484/LS	OF	22
DATE:	02/20/2008		
REVISION:	E.H.E. NO.: 565-06-13302		