

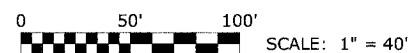
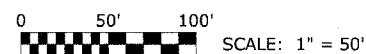
FOR INDEX OF SHEETS SEE SHEET NO. 2

STATE OF ILLINOIS
DEPARTMENT OF TRANSPORTATION
DIVISION OF HIGHWAYS
PLANS FOR PROPOSED
FEDERAL AID HIGHWAY
FAU 3537 (LAKE STREET)
9th AVENUE TO DES PLAINES RIVER
SECTION 06-00122-00-SW
PROJECT TE-00D1(753)
JOB C-91-120-07
VILLAGE OF MAYWOOD
COOK COUNTY

TRAFFIC DATA

2030 ADT = 14,260
 POSTED SPEED LIMIT: 30 MPH
 DESIGN SPEED LIMIT: 30 MPH

PROJECT LOCATED IN
 THE VILLAGE OF MAYWOOD



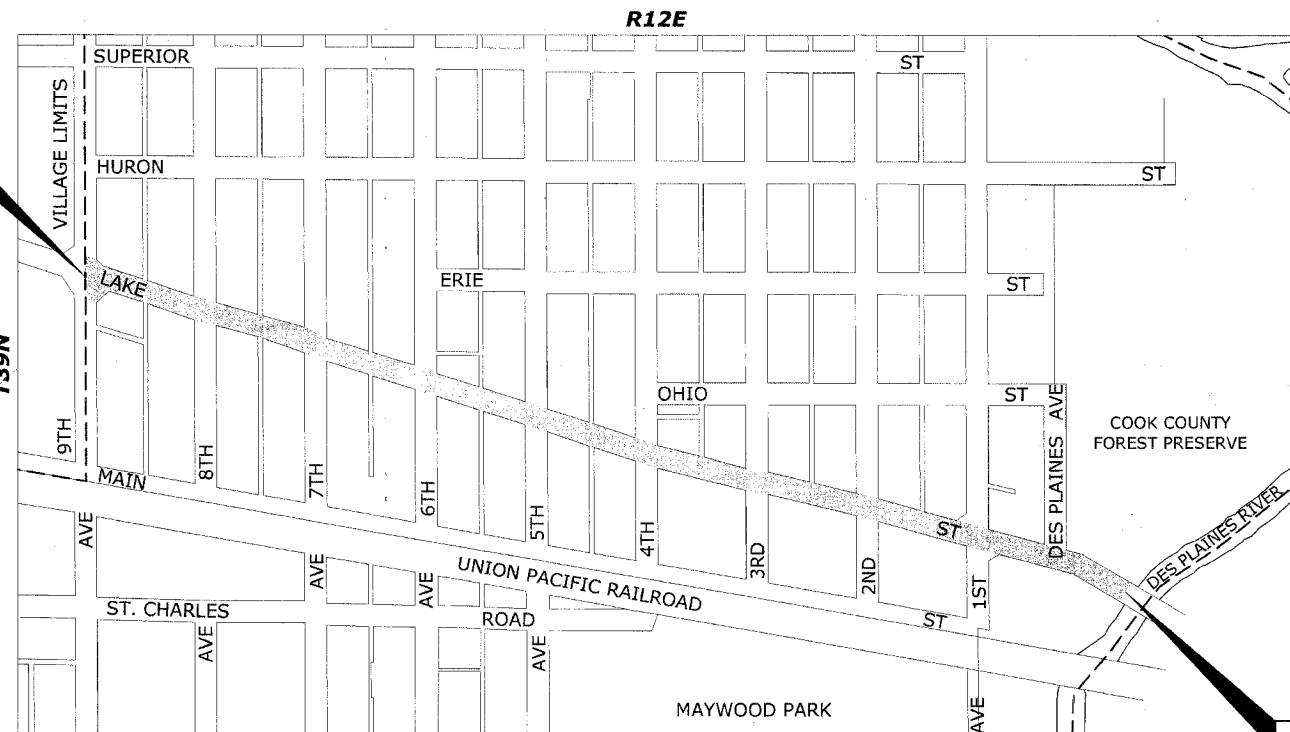
FULL SIZE PLANS HAVE BEEN PREPARED USING STANDARD ENGINEERING SCALES. REDUCED SIZED PLANS WILL NOT CONFORM TO STANDARD SCALES. IN MAKING MEASUREMENTS ON REDUCED PLANS, THE ABOVE SCALES MAY BE USED.



LOCATION OF SECTION INDICATED THIS:

LOCATION MAP

**PROJECT BEGINS
 STATION 4+30
 LAKE STREET**



**PROJECT ENDS
 STATION 36+20
 LAKE STREET**

PROVISO TOWNSHIP

- AREA OF IMPROVEMENT

GROSS AND NET LENGTH OF PROJECT = 3,190 FT. = 0.604 MI.



**Know what's below.
 Call before you dig.**

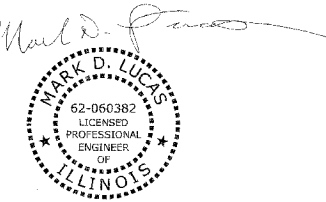
ILLINOIS DEPARTMENT OF TRANSPORTATION
 DEPARTMENT OF HIGHWAYS

APPROVED: *[Signature]* 20 08
 VILLAGE OF MAYWOOD, PRESIDENT

PASSED: *[Signature]* APRIL 10, 2008
 DISTRICT 1 ENGINEER OF LOCAL ROADS & STREETS

RELEASING FOR BID
 BASED ON LIMITED
 REVIEW: *[Signature]* APRIL 10, 2008
 DEPUTY DIRECTOR OF HIGHWAYS, REGION 1 ENGINEER

(PRINTED BY AUTHORITY OF THE STATE OF ILLINOIS)



DATE SIGNED: 2-28-08
 LICENSE EXPIRES: 11-30-09

CONTRACT NO. 83938

FIELD ENGINEER: MARILYN SOLOMON (847)705-4551
 CONSULTANT: EDWIN HANCOCK ENGINEERING COMPANY
 9933 ROOSEVELT ROAD PHONE: (708)865-0300
 WESTCHESTER, ILLINOIS 60154
 Drawing file: W:\Projects\56506153 - Lake St Street\83938-Cover.dwg Feb 20, 2008 - 4:28pm

INDEX OF SHEETS

SHEET NO.	DESCRIPTION
1	TITLE SHEET, LOCATION MAP
2	INDEX OF SHEETS, LEGEND, BENCHMARKS, I.D.O.T. STANDARD DRAWINGS
3	GENERAL NOTES
4	SUMMARY OF QUANTITIES
5	TYPICAL CROSS SECTIONS
6-9	STREETSCAPING PLANS
10-11	ROADWAY DETAILS
12-15	LIGHTING PLANS
16	LIGHTING WIRING DIAGRAM
17-18	LIGHTING DETAILS
19-20	LANDSCAPING PLAN
21	TRAFFIC CONTROL AND PROTECTION FOR SIDE ROADS, INTERSECTIONS AND DRIVEWAYS
22	ARTERIAL ROAD INFORMATION SIGN

BENCHMARKS

TBM	DESCRIPTION	ELEVATION
TBM	NORTHWEST FLANGE BOLT ON FIRE HYDRANT AT NORTHEAST CORNER OF LAKE STREET AND 8TH AVENUE	630.86
BM-61	NORTHWEST FLANGE BOLT ON FIRE HYDRANT AT NORTHEAST CORNER OF LAKE STREET AND 6TH AVENUE.	629.53
TBM	NORTHEAST FLANGE BOLT ON FIRE HYDRANT AT NORTHWEST CORNER OF LAKE STREET AND 3RD AVENUE.	629.03
BM-59	NORTHWEST FLANGE BOLT ON FIRE HYDRANT AT NORTH WEST CORNER OF LAKE STREET AND 5TH AVENUE.	630.10
TBM	NORTHWEST FLANGE BOLT ON FIRE HYDRANT AT NORTHWEST CORNER OF LAKE STREET AND 4TH AVENUE.	628.27
BM-58	NORTHEAST FLANGE BOLT ON FIRE HYDRANT AT NORTHEAST CORNER OF LAKE STREET AND 3RD AVENUE.	627.69
TBM	NORTHEAST CORNER HANDHOLE AT SOUTHEAST CORNER OF LAKE STREET AND 2ND AVENUE.	626.72
BM-57	NORTHWEST FLANGE BOLT ON FIRE HYDRANT AT SOUTHWEST CORNER OF LAKE STREET AND 1ST AVENUE.	629.10

LEGEND OF SYMBOLS

EXISTING	PROPOSED	DESCRIPTION
		COMBINATION SEWER
		COMBINED RELIEF SEWER
		STORM SEWER
		WATER MAIN
		MANHOLE, TYPE A, 4' DIAMETER
		INLET, TYPE A
		CATCH BASIN
		FIRE HYDRANT
		WATER MAIN VALVE BOX
		WATER SERVICE BOX
		HANDHOLE
		CURB & GUTTER TO BE REMOVED & REPLACED
		DRIVEWAY PAVEMENT REMOVAL
		PORTLAND CEMENT CONCRETE SIDEWALK
		PORTLAND CEMENT CONCRETE DRIVEWAY
		BRICK SIDEWALK
		SIDEWALK REMOVAL
		STREET LIGHT
		TREE WITH CAST IRON GRATE
		RIM ELEVATION (COMBINED SEWER) INVERT ELEVATION
		RIM ELEVATION (STORM) INVERT ELEVATION
		RIM ELEVATION (WATER MAIN) TOP OF WATER MAIN

I.D.O.T. STANDARD DRAWINGS

STANDARD NO.	TITLE OR DESCRIPTION
000001-05	STANDARD SYMBOLS, ABBREVIATIONS AND PATTERNS
424001-05	CURB RAMPS FOR SIDEWALKS
701301-02	LANE CLOSURE, 2L, 2W, SHORT TIME OPERATIONS
701501-04	URBAN LANE CLOSURE, 2L, 2W UNDIVIDED
701701-05	URBAN LANE CLOSURE, MULTILANE INTERSECTION
701801-03	LANE CLOSURE MULTILANE 1W OR 2W CROSSWALK OR SIDEWALK CLOSURE
701901	TRAFFIC CONTROL DEVICES

Drawing File: W:\Projects\150500153 - Lake St Streetscape\Index.dwg Feb 20, 2009 - 4:27pm

ROUTE NO.	SECTION	COUNTY	TOTAL SHEETS	SHEET NO.
FAU 3537	**	COOK	22	3
ILLINOIS PROJECT		TE-00D1(753)		
VILLAGE SECTION		06-00122-00-SW		
CONTRACT NO. 83938				

ACCESS

THE CONTRACTOR WILL BE REQUIRED TO MAINTAIN ACCESS FOR EMERGENCY VEHICLES TO INGRESS AND EGRESS ONTO PRIVATE & COMMERCIAL PROPERTY DURING THE CONSTRUCTION PERIOD. ALSO DURING CONSTRUCTION, GARBAGE TRUCKS MUST BE PERMITTED ACCESS TO THE WORK ZONE IN ORDER TO PICK UP RESIDENTIAL AND COMMERCIAL GARBAGE FOR THOSE PROPERTIES FRONTING THE WORK ZONE.

STANDARDS

ANY REFERENCE TO STANDARDS THROUGHOUT THE PLANS OR SPECIAL PROVISIONS SHALL BE INTERPRETED TO BE THE LATEST STANDARD OF THE DEPARTMENT AS SHOWN ON THE INDEX OF SHEETS IN THE PLANS.

UNDERGROUND UTILITIES

THE LOCATIONS OF THE UNDERGROUND UTILITIES AS SHOWN ON THE PLANS HAVE BEEN OBTAINED BY FIELD SURVEYS AND SEARCHES OF AVAILABLE RECORDS. IT IS BELIEVED THAT THE DATA IS ESSENTIALLY CORRECT, BUT THE VILLAGE OF MAYWOOD, THE ILLINOIS DEPARTMENT OF TRANSPORTATION AND/OR OTHER OFFICES AND AGENCIES ASSOCIATED WITH THE DEVELOPMENT OF THESE PLANS DO NOT GUARANTEE THEIR ACCURACY OR COMPLETENESS. THE CONTRACTOR WILL BE REQUIRED TO VERIFY THE EXACT LOCATION OF EACH FACILITY WITH THE UTILITY COMPANY, AND SHALL TAKE DUE CARE IN ALL PHASES OF THE CONSTRUCTION TO PROTECT ANY SUCH FACILITIES WHICH MAY BE AFFECTED BY THE WORK. ANY DAMAGE TO EXISTING UTILITIES SHALL BE REPAIRED AT THE CONTRACTOR'S EXPENSE.

ADJUSTMENTS REQUIRED BY UTILITY COMPANIES WILL BE PERFORMED BY THE COMPANY INVOLVED OR ITS CONTRACTOR.

COORDINATION OF ALL UTILITY WORK INVOLVED IN THE CONSTRUCTION AREA WILL BE DISCUSSED AT A PRE-CONSTRUCTION CONFERENCE.

THE CONTRACTOR SHALL USE EXTREME CAUTION IN THE REMOVAL OF ABANDONED EXISTING GAS LINES SINCE RESIDUAL MATERIALS CONTAINED THEREIN ARE HIGHLY EXPLOSIVE, FLAMMABLE, AND TOXIC. ONCE THE MAINS ARE ABANDONED BY THE OWNER, THE CONTRACTOR SHALL ASSUME ALL RESPONSIBILITY FOR ANY DAMAGE AND/OR INJURY OCCURRING ON THE PROJECT DUE TO HIS OPERATIONS NEXT TO THE MAINS AND/OR THE METHOD OF REMOVAL OF THE ABANDONED MAINS. UNDER NO CIRCUMSTANCE SHALL THE UTILITY COMPANIES BE HELD LIABLE FOR ANY DAMAGE AND/OR INJURY ONCE THEIR MAINS HAVE BEEN RELOCATED AND THE EXISTING ABANDONED.

EXISTING STRUCTURE MODIFICATIONS

ALL KNOWN EXISTING STRUCTURES IN THE PAVEMENT OR ADJACENT AREAS WHICH ARE INVOLVED IN THE CONSTRUCTION HAVE BEEN SHOWN ON THE PLANS AND NOTED AS TO BE REMOVED, FILLED, RECONSTRUCTED, OR ADJUSTED BY THE CONTRACTOR EXCEPT THOSE OF AMERITECH, COMED, AND THE NICOR GAS COMPANY, WHICH ARE TO BE ADJUSTED BY THE APPROPRIATE UTILITY FORCE. WHERE EXISTING STRUCTURES ARE TO BE REMOVED OR FILLED, OR THE EXISTING CASTING REPLACED, THE CASTINGS REMOVED FROM THE STRUCTURE BECOME THE PROPERTY OF THE VILLAGE OF MAYWOOD.

MAINTENANCE OF EXISTING DRAINAGE STRUCTURES

WHEN DURING THE CONSTRUCTION OPERATIONS, ANY LOOSE MATERIAL IS DEPOSITED IN THE FLOW LINE OF ANY GUTTERS OR DRAINAGE STRUCTURE SO THAT THE NATURAL FLOW OF WATER IS OBSTRUCTED, IT SHALL BE REMOVED AT THE CLOSE OF EACH WORKING DAY. AT THE CONCLUSION OF THE CONSTRUCTION OPERATIONS, ALL DRAINAGE FACILITIES SHALL BE CLEAN AND FREE OF ALL OBSTRUCTIONS. THE COST OF THIS WORK SHALL BE INCLUDED IN THE CONTRACT.

MAINTENANCE OF SEWER FLOWS

THE CONTRACTOR SHALL CONDUCT HIS OPERATIONS SO AS TO MAINTAIN AT ALL TIMES FLOWS THROUGH EXISTING STORM AND SANITARY SEWER SYSTEMS. HE SHALL ALSO PROVIDE AND MAINTAIN AN EFFICIENT PUMPING PLANT IF NECESSARY AND A TEMPORARY OUTLET AND BE PREPARED AT ALL TIMES TO DISPOSE OF THE WATER COLLECTED IN A SAFE MANNER WITHOUT DAMAGE OF ANY KIND TO ADJACENT PROPERTIES. THE ENDS OF EXISTING DRAINAGE LINES WHICH ARE NOT TO BE INCORPORATED INTO THE PROJECT ARE TO BE SEALED AS SPECIFIED IN THE SPECIAL PROVISIONS. THE COST OF ALL THE PREVIOUSLY MENTIONED WORK SHALL BE INCLUDED IN THE CONTRACT. ALL ACCUMULATION OF MATERIAL IN THE STRUCTURE DUE TO CONSTRUCTION OPERATIONS AS WELL AS MATERIAL EXISTING BEFORE CONSTRUCTION, SHALL BE REMOVED BY THE CONTRACTOR AT HIS EXPENSE.

AGGREGATE BEDDING FOR CONCRETE WORK

NEW COMBINATION CURB AND GUTTER, SIDEWALK AND DRIVEWAY PAVEMENT SHALL BE PLACED ON A MINIMUM OF TWO INCHES (2") OF COMPACTED CA-6 STONE BEDDING. NEW CONCRETE PAVEMENT, WHICH WILL BE INSTALLED WITHIN PROPOSED ALLEY RETURNS, SHALL BE PLACED ON A MINIMUM OF FOUR INCHES (4") OF COMPACTED CA-6 STONE BEDDING. ADDITIONAL AGGREGATE REQUIRED TO ADJUST THE EXISTING ELEVATION OF THE SUBGRADE TO THE PROPOSED ELEVATION WILL BE INCLUDED AS PART OF THIS WORK.

PAYMENT WILL NOT BE MADE SEPARATELY BUT WILL BE INCLUDED IN THE UNIT PRICE FOR THE RESPECTIVE CONCRETE ITEMS IN THE CONTRACT.

TRAFFIC PROTECTION

CONTRACTOR'S ATTENTION IS DIRECTED TO THE FACT THAT WHEN WORK COMMENCES, THE CONTRACTOR SHALL ASSUME THE MAINTENANCE OF ANY PAVEMENT, SHOULDERS, DRAINAGE FACILITIES, TRAFFIC CONTROL SIGNS, PAVEMENT MARKINGS, AND OTHER APPURTENANCES ON ROADWAYS WITHIN THE LIMITS OF THE CONTRACT WHICH ARE TO BE USED BY THE PUBLIC DURING CONSTRUCTION AND TO RETAIN THIS MAINTENANCE RESPONSIBILITY UNTIL THE VILLAGE ASSUMES THE MAINTENANCE. NEED FOR SNOW AND ICE CONTROL DURING THE CONSTRUCTION PERIOD SHALL BE ACCOMMODATED FOR BY OTHERS. ALL UNBALLASTED TYPE I & TYPE II BARRICADES SHALL HAVE TWO SANDBAGS ONE ACROSS EACH BOTTOM RAIL.

EXISTING ROADWAY SIGNS

ALL EXISTING ROADWAY SIGNS, MARKERS, ETC., LOCATED WITHIN THE ROADWAY RIGHT-OF-WAY WHICH ARE INVOLVED IN THIS CONSTRUCTION SHALL BE REMOVED AND DELIVERED TO THE VILLAGE PUBLIC WORKS YARD. ALL WORK ASSOCIATED WITH THIS ITEM SHALL BE CONSIDERED INCLUDED IN THE CONTRACT AND NO EXTRA COMPENSATION FOR REINSTALLATION WILL BE ALLOWED.

SAW CUTTING

THE CONTRACTOR SHALL SAW CUT ASPHALT PAVEMENT AND DRIVEWAY PAVEMENT AS INDICATED ON THE PLANS OR AS DIRECTED BY THE ENGINEER, TO SEPARATE THE EXISTING PAVEMENT TO BE REMOVED BY MEANS OF AN APPROVED CONCRETE SAW TO A DEPTH AS DIRECTED BY THE ENGINEER. SUITABLE GUIDELINES OR DEVICES SHALL BE USED TO ASSURE CUTTING A NEAT, STRAIGHT LINE AS SHOWN ON THE PLANS. CARE SHALL BE TAKEN BY THE CONTRACTOR SO AS NOT TO DAMAGE THE REMAINING PAVEMENT DIRECTLY ADJACENT TO THE PAVEMENT TO BE REMOVED. ANY DAMAGE TO THE EXISTING PAVEMENT RESULTING FROM PAVEMENT REMOVAL OPERATIONS SHALL BE REPAIRED AT THE CONTRACTOR'S EXPENSE. THE PRICE OF SAW CUTTING, AS NOTED ABOVE, SHALL BE INCLUDED IN THE PARTICULAR PAY ITEMS.

TEMPORARY TRAFFIC CONTROL

THE RESIDENT ENGINEER SHALL CONTACT THE TRAFFIC CONTROL SUPERVISOR AT (847) 705-4470 A MINIMUM OF 72 HOURS PRIOR TO THE PLACEMENT OF TEMPORARY TRAFFIC CONTROL DEVICES.

Drawing File: W:\Projects\45506153 - Lake St Streetscape\Gen-Notes.dwg Feb 20, 2008 - 4:27pm



◆ Civil Engineers
◆ Municipal Consultants
◆ Established 1911

9933 Roosevelt Road
Westchester, Illinois 60154-2780
Phone: 708/865-0300
Fax: 708/865-1212

**LAKE STREET STREETScape
VILLAGE OF MAYWOOD, ILLINOIS**

GENERAL NOTES

SCALE:	NONE	SHEET 3 OF 22
DRAWN BY:	LEV ECW	
BOOK NO.:	SDR33/1480/1484/LS	
DATE:	02/20/2008	
REVISION:		
E.H.E. NO.:	565-06-15302	

SUMMARY OF QUANTITIES

CODE	PAY ITEM	UNIT	TOTAL QUANTITY	H22	07C
				Y003 80% FEDERAL 20% LOCAL	Y003 100% LOCAL
20200100	EARTH EXCAVATION	CUYD	45	45	0
* 21101615	TOPSOIL FURNISH AND PLACE, 4"	SQYD	200	200	0
* 25000400	NITROGEN FERTILIZER NUTRIENT	LBS	3	3	0
* 25000500	PHOSPHORUS FERTILIZER NUTRIENT	LBS	3	3	0
* 25000600	POTASSIUM FERTILIZER NUTRIENT	LBS	3	3	0
* 25200100	SODDING	SQYD	200	200	0
* 25300500	TOPSOIL FOR PLANTING	CUYD	45	45	0
42101300	PROTECTIVE COAT	SQYD	3730	3730	0
42300300	PORTLAND CEMENT CONCRETE DRIVEWAY PAVEMENT, 7"	SQYD	525	525	0
42300400	PORTLAND CEMENT CONCRETE DRIVEWAY PAVEMENT, 8"	SQYD	200	200	0
42400200	PORTLAND CEMENT CONCRETE SIDEWALK, 5"	SQFT	27500	27500	0
42400800	DETECTABLE WARNINGS	SQFT	1100	1100	0
44000200	DRIVEWAY PAVEMENT REMOVAL	SQYD	525	525	0
44000500	COMBINATION CURB AND GUTTER REMOVAL	FOOT	520	520	0
44000600	SIDEWALK REMOVAL	SQFT	39500	39500	0
56500600	DOMESTIC WATER SERVICE BOXES TO BE ADJUSTED	EACH	7	7	0
60266600	VALVE BOXES TO BE ADJUSTED	EACH	1	1	0
60300305	FRAMES AND LIDS TO BE ADJUSTED	EACH	2	2	0
60604100	COMBINATION CONCRETE CURB AND GUTTER, TYPE B-6.12 (MODIFIED)	FOOT	520	520	0
67100100	MOBILIZATION	LSUM	1	1	0
70101800	TRAFFIC CONTROL AND PROTECTION (SPECIAL)	LSUM	1	1	0
* 80400100	ELECTRIC SERVICE INSTALLATION	EACH	1	1	0
* 81018500	CONDUIT PUSHED, 2" DIA., GALVANIZED STEEL	FOOT	1350	1350	0
* 81019000	CONDUIT PUSHED, 5" DIA., GALVANIZED STEEL	FOOT	60	60	0
* 81400115	HANDHOLE TO BE ADJUSTED	EACH	8	8	0
* 81603090	UNIT DUCT, 600V, 3-1C NO. 4, 1/C NO. 6 GROUND, (XLP-TYPE USE), 1 1/4" DIA., POLYETHYLENE	FOOT	7520	7520	0
* 81702440	ELECTRIC CABLE IN CONDUIT, 600V, (XLP-TYPE USE) 3-1/C NO. 1/0	FOOT	75	75	0
* 81900200	TRENCH AND BACKFILL FOR ELECTRICAL WORK	FOOT	5700	5700	0
* 82500505	LIGHTING CONTROLLER, SPECIAL	EACH	1	1	0
* 84200600	REMOVAL OF EXISTING LIGHTING UNIT, NO SALVAGE	EACH	37	0	37
* 84200700	LIGHTING FOUNDATION REMOVAL	EACH	37	0	37

* DENOTES SPECIALTY ITEM

SUMMARY OF QUANTITIES

CODE	PAY ITEM	UNIT	TOTAL QUANTITY	Y003	Y003
				80% FEDERAL 20% LOCAL	100% LOCAL
* 84500110	REMOVAL OF LIGHTING CONTROLLER	EACH	1	0	1
* 84500130	REMOVAL OF LIGHTING CONTROLLER FOUNDATION	EACH	1	0	1
* A2000724	TREE, ACER PLATANOIDES COLUMNARE (COLUMNAR NORWAY MAPLE), 3" CALIPER, BALLED AND BURLAPPED	EACH	9	9	0
* A2004724	TREE, GLEDITSIA TRIACANTHOS INTERMIS SHADEMASTER (SHADEMASTER THORNLESS COMMON HONEY LOCUST) 3" CALIPER, BALLED AND BURLAPPED	EACH	8	8	0
* A2008124	TREE, TILIA CORDATA GREENSPIRE (GREENSPIRE LITTLE LEAF LINDEN), 3" CALIPER, BALLED AND BURLAPPED	EACH	9	9	0
X0322256	TEMPORARY INFORMATION SIGNING	SQFT	103	103	0
* X0323574	MAINTENANCE OF LIGHTING SYSTEM	CAL MO	6	0	6
* XX003059	DECORATIVE BRICK SIDEWALK	SQFT	11800	11800	0
* XX005878	CAST IRON TREE GRATES	EACH	26	26	0
* XX006937	GROUND ROD, 5/8" X 10 FT	EACH	60	60	0
* XX007000	PORTLAND CEMENT CONCRETE BASE COURSE, 3" DECORATIVE LIGHT POLE, CONCRETE, 30' MOUNTING HEIGHT WITH 1-6' MAST ARM AND 1-3' MAST ARM	SQFT	11800	11800	0
XX007463	DECORATIVE LUMINAIRE, METAL HALIDE, HORIZONTAL MOUNT 150 WATT	EACH	60	0	60
XX007464	LUMINAIRE, METAL HALIDE, SPECIAL, TYPE III, 175 WATT	EACH	46	0	46
* XX004716	LUMINAIRE, METAL HALIDE, SPECIAL, TYPE III, 400 WATT	EACH	8	0	8
* XX006511	LUMINAIRE, METAL HALIDE, SPECIAL, TYPE III, 70 WATT	EACH	6	0	6
* XX004714	LUMINAIRE, METAL HALIDE, SPECIAL, TYPE III, 70 WATT	EACH	60	60	0

* DENOTES SPECIALTY ITEM

Drawing File: W:\Projects\65506153 - Lake St Streetscape\Sum_Quantities.dwg Feb 20, 2008 - 4:28pm



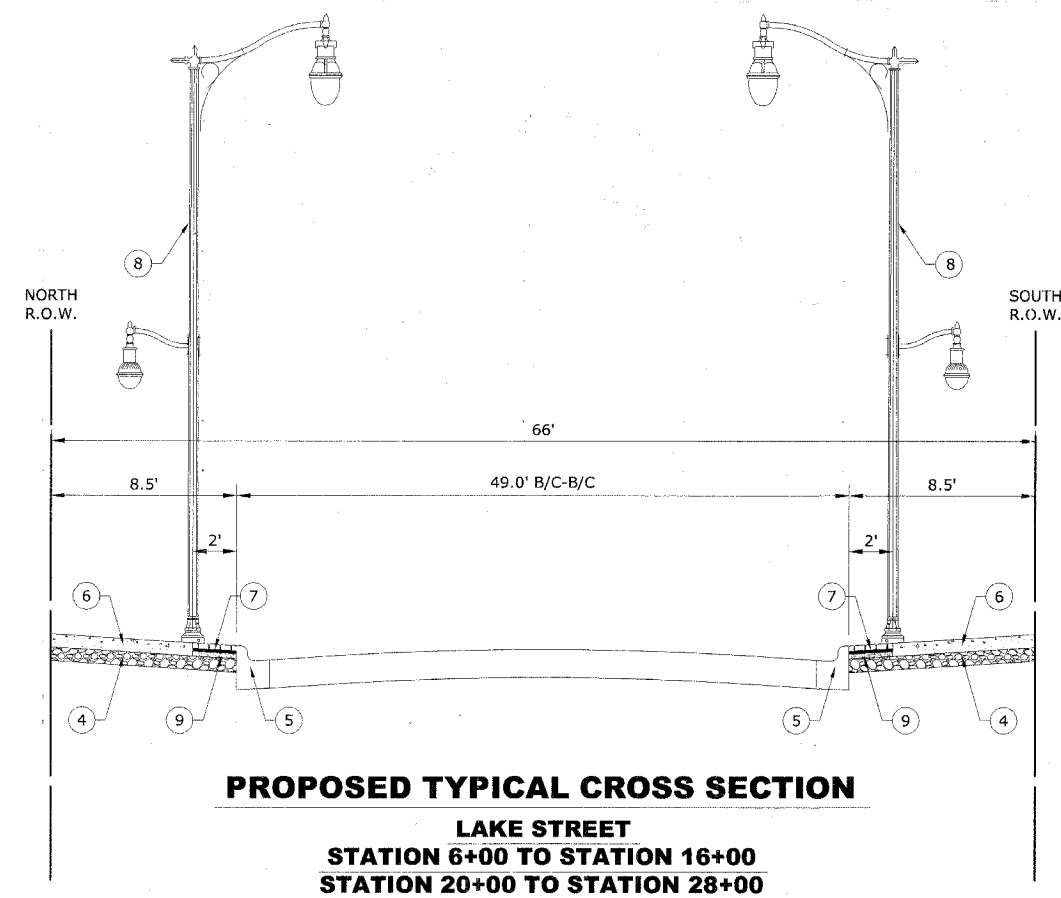
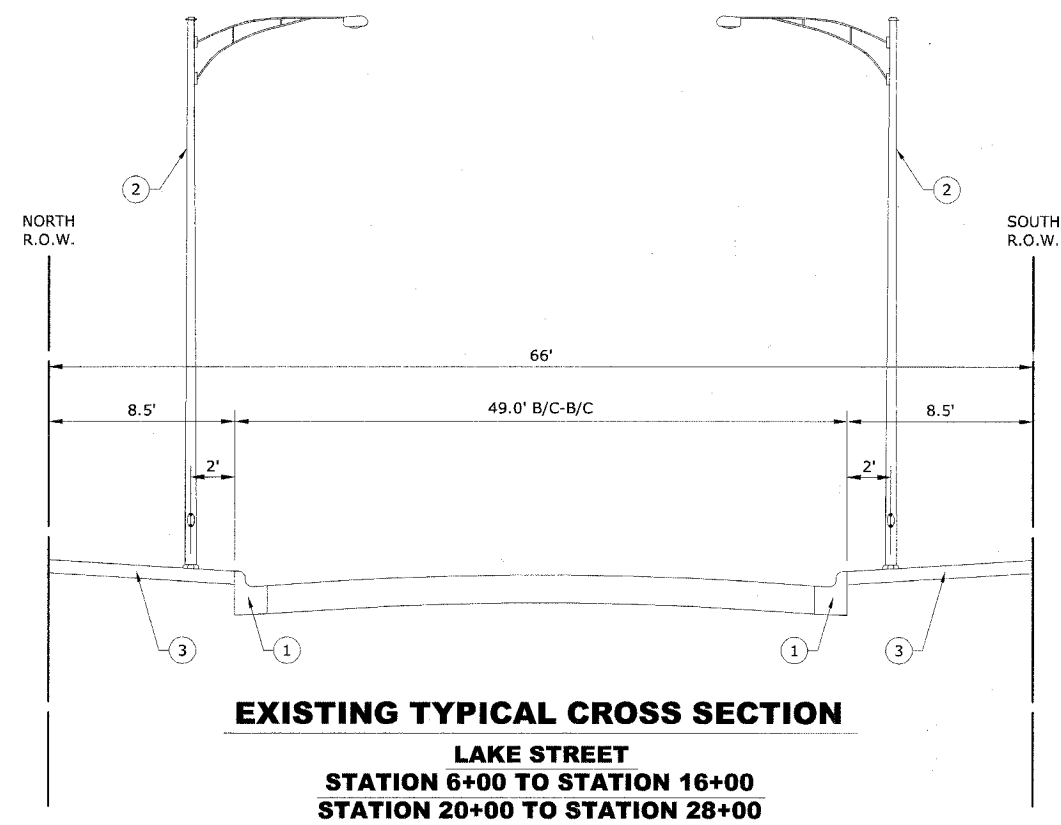
♦ Civil Engineers
 ♦ Municipal Consultants
 ♦ Established 1911
 9933 Roosevelt Road
 Westchester, Illinois 60154-2780
 Phone: 708/865-0300
 Fax: 708/865-1212

**LAKE STREET STREETScape
VILLAGE OF MAYWOOD, ILLINOIS**

SUMMARY OF QUANTITIES

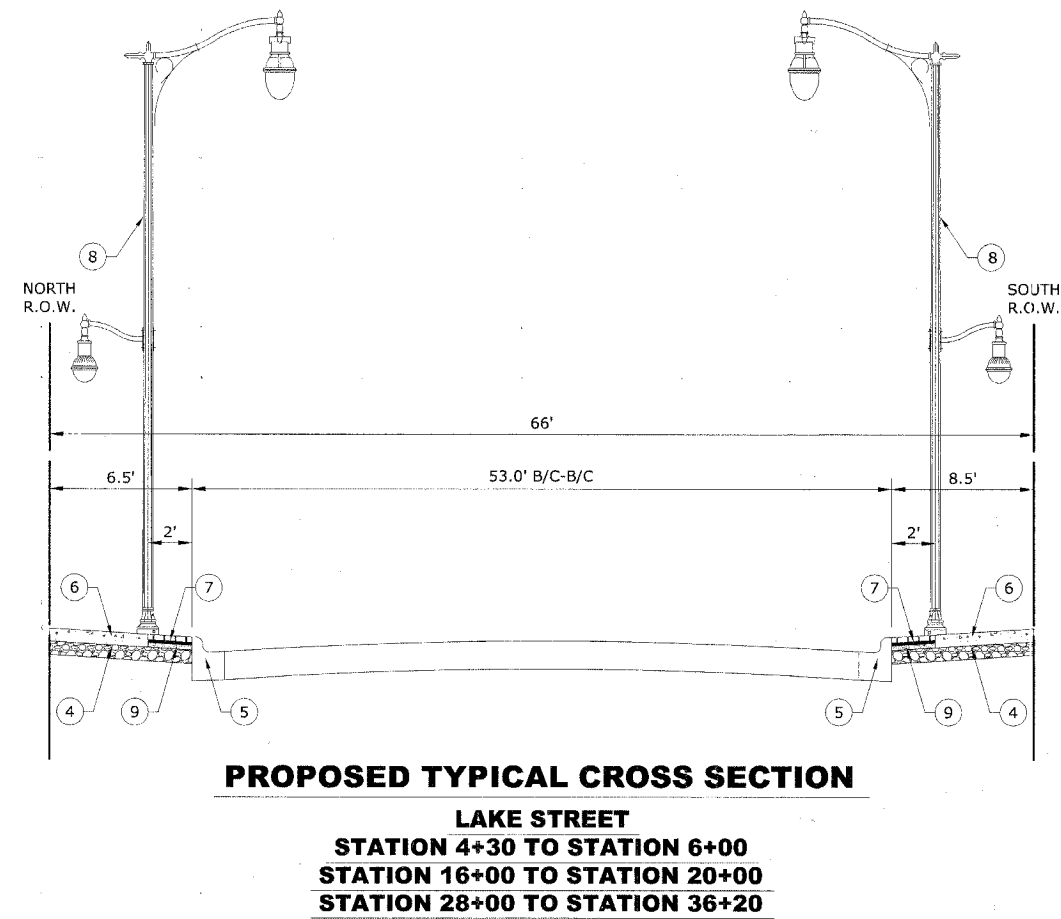
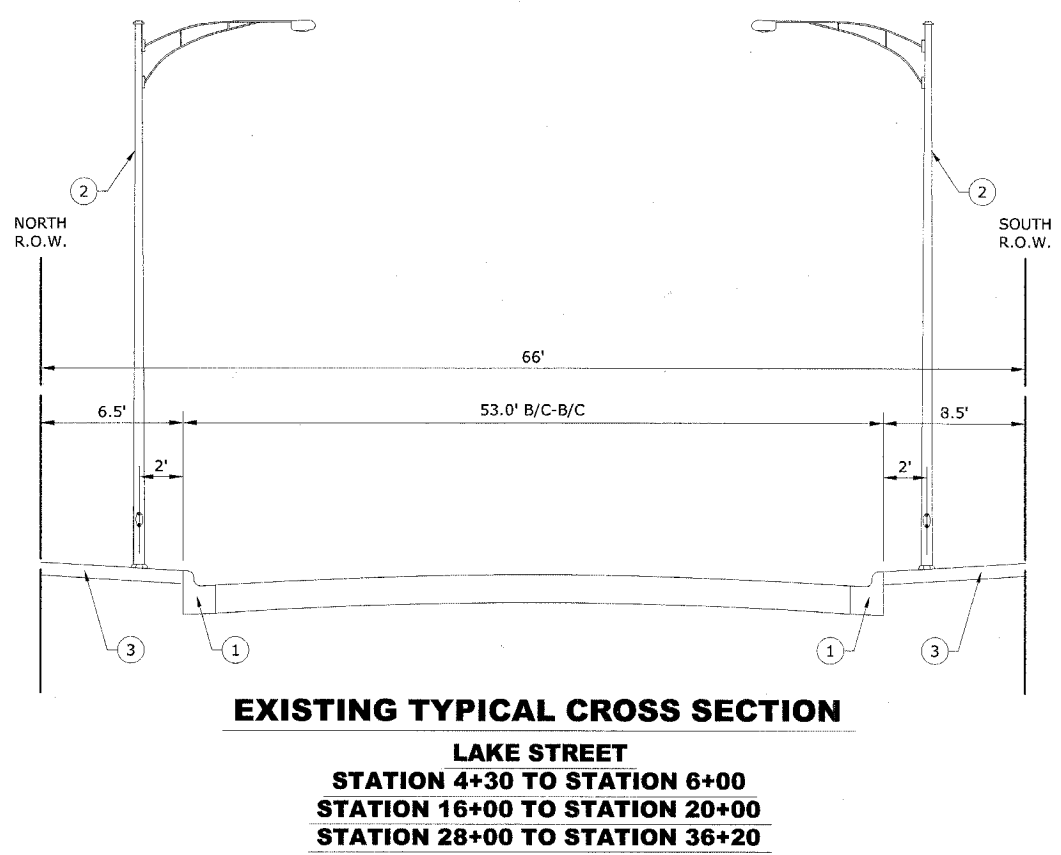
SCALE:	NONE	SHEET 4 OF 22
DRAWN BY:	LEV ECW	
BOOK NO.:	SDR33/1480/1484/LS	
DATE:	02/20/2008	
REVISION:		
E.H.E. NO.:	565-06-15302	

ROUTE NO.	SECTION	COUNTY	TOTAL SHEETS	SHEET NO.
FAU 3537	**	COOK	22	5
ILLINOIS PROJECT		TE-00D1(753)		
VILLAGE SECTION		06-00122-00-SW		
CONTRACT NO. 83938				



TYPICAL CROSS SECTION LEGEND

- ① COMBINATION CURB & GUTTER REMOVAL AS NOTED ON PLANS
- ② EXISTING ROADWAY LIGHT POLE, 25' MOUNTING HEIGHT WITH 6' OR 9' MAST ARM WITH OVERHEAD WIRING TO BE REMOVED
- ③ SIDEWALK REMOVAL
- ④ 2" CRUSHED STONE (COST IS INCLUDED IN PCC SIDEWALK, 5", PCC BASE COURSE, 3", OR COMBINATION CONCRETE CURB & GUTTER, TYPE B-6.12 (MODIFIED) ITEMS)
- ⑤ COMBINATION CONCRETE CURB & GUTTER, TYPE B-6.12 (MODIFIED)
- ⑥ PORTLAND CEMENT CONCRETE SIDEWALK, 5"
- ⑦ DECORATIVE BRICK SIDEWALK
- ⑧ DECORATIVE LIGHT POLE, CONCRETE, 30' MOUNTING HEIGHT WITH 1 - 6' MAST ARM AND LUMINAIRE AND 1 - 3' MAST ARM AND LUMINAIRE
- ⑨ PORTLAND CEMENT CONCRETE BASE COURSE, 3"



Drawing File: \\K:\Projects\565\0153 - Lake St Streetscape\Typical_X-Sections.dwg Feb 20, 2008 - 4:28pm



◆ Civil Engineers
◆ Municipal Consultants
◆ Established 1911

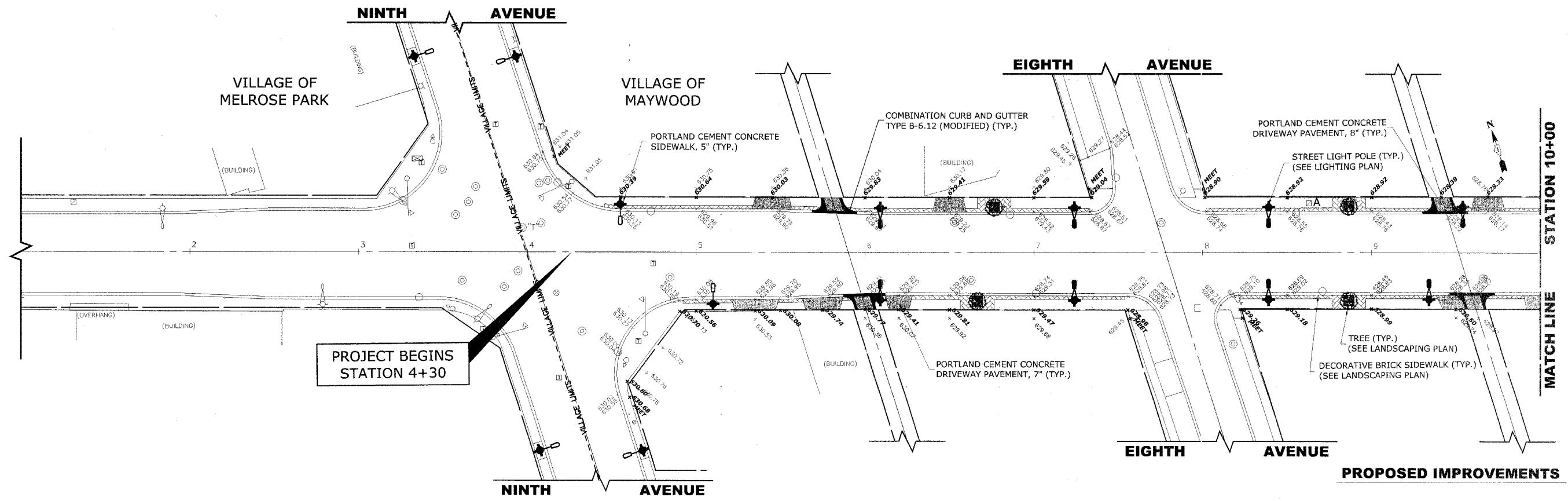
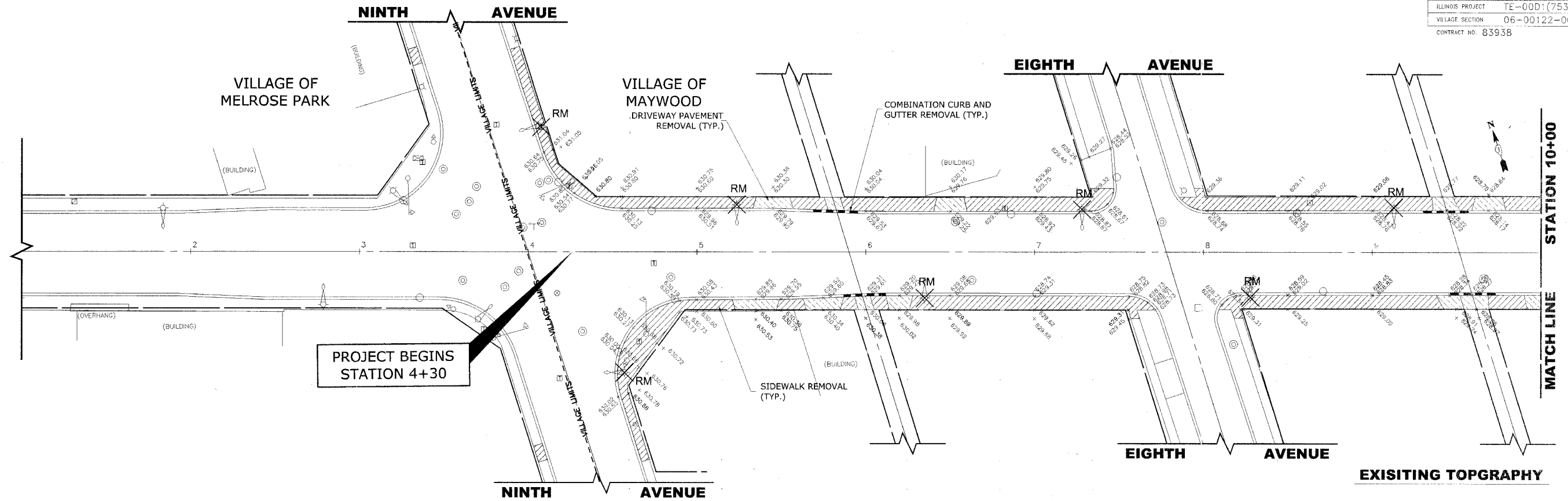
9933 Roosevelt Road
Westchester, Illinois 60154-2780
Phone: 708/865-0300
Fax: 708/865-1212

LAKE STREET STREETScape
VILLAGE OF MAYWOOD, ILLINOIS

TYPICAL CROSS SECTIONS

SCALE:	NONE	SHEET 5 / 22
DRAWN BY:	LEV ECW	
BOOK NO.:	SDR33/1480/1484/LS	
DATE:	02/20/2008	
REVISION:		E.H.E. NO.: 565-06-15302

ROUTE NO.	SECTION	COUNTY	TOTAL SHEETS	SHEET NO.
FAU 3537	**	COOK	22	6
ILLINOIS PROJECT		TE-00D(753)		
VILLAGE SECTION		06-00122-00-SW		
CONTRACT NO. 83938				



Drawing file: W:\Projects\83938\Lake St Streetscape.dwg Feb 20, 2008 - 4:30pm

HANCOCK ENGINEERING

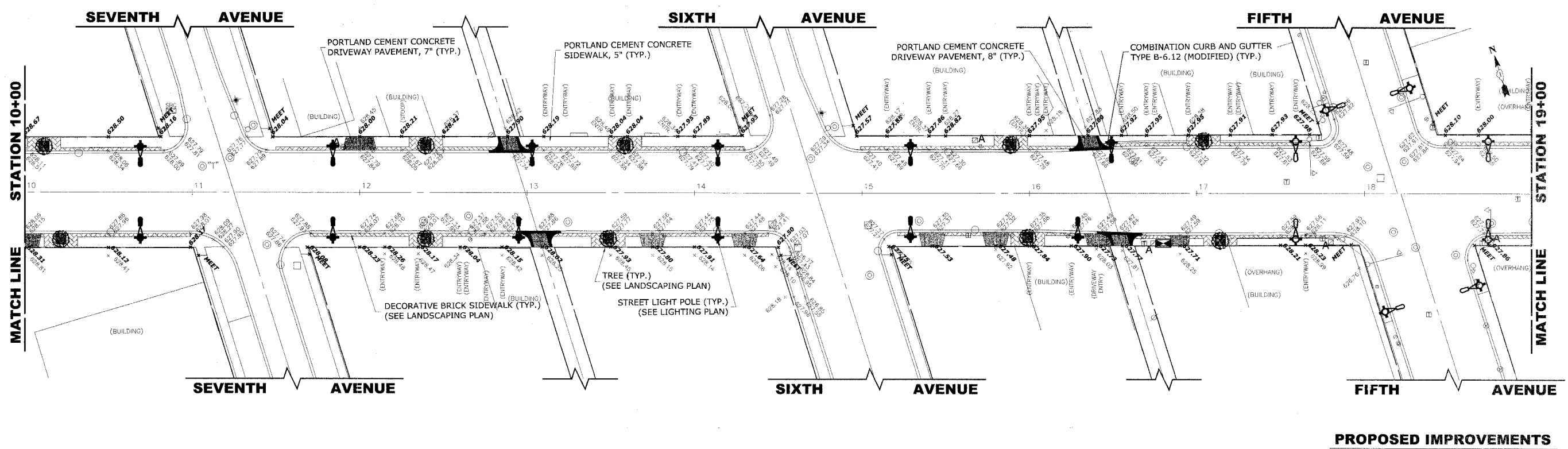
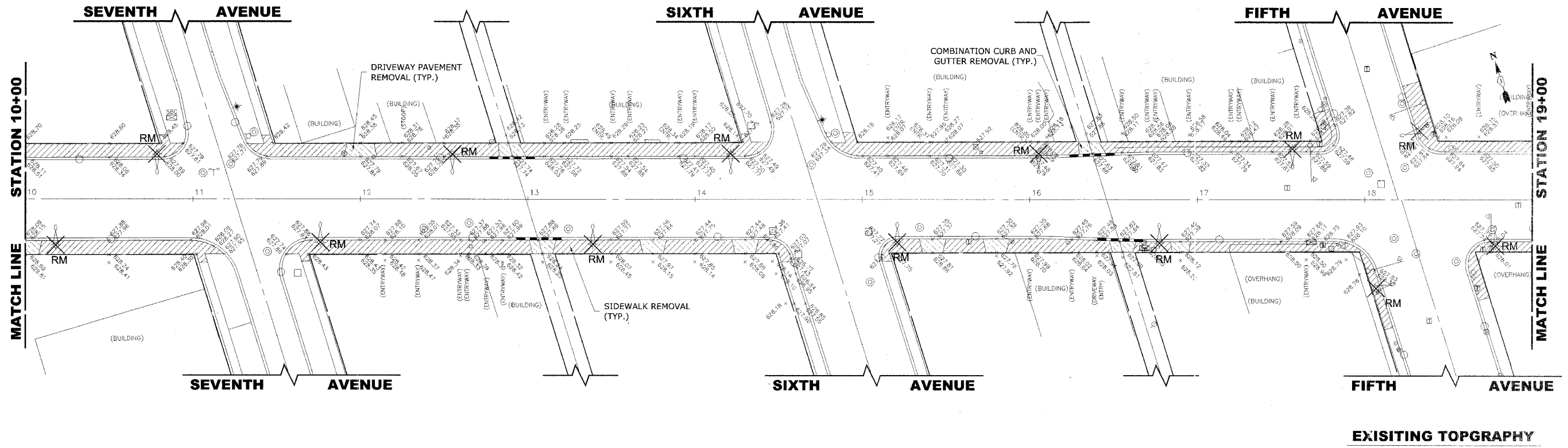
- ◆ Civil Engineers
- ◆ Municipal Consultants
- ◆ Established 1911

9933 Roosevelt Road
Westchester, Illinois 60154-2780
Phone: 708/865-0300
Fax: 708/865-1212

**LAKE STREET STREETSCAPE
VILLAGE OF MAYWOOD, ILLINOIS**

STREETSCAPING PLAN

SCALE:	1"=30'	6 / 22
DRAWN BY:	LEV ECW	
BOOK NO.:	SDR33/1480/1484/LS	22 OF
DATE:	02/20/2008	
E.H.E. NO.:	565-06-15302	



Drawing File: W:\Projects\5506153 - Lake St. Streetscape\Lake St. Streetscape.dwg Feb 20, 2008 - 4:32pm



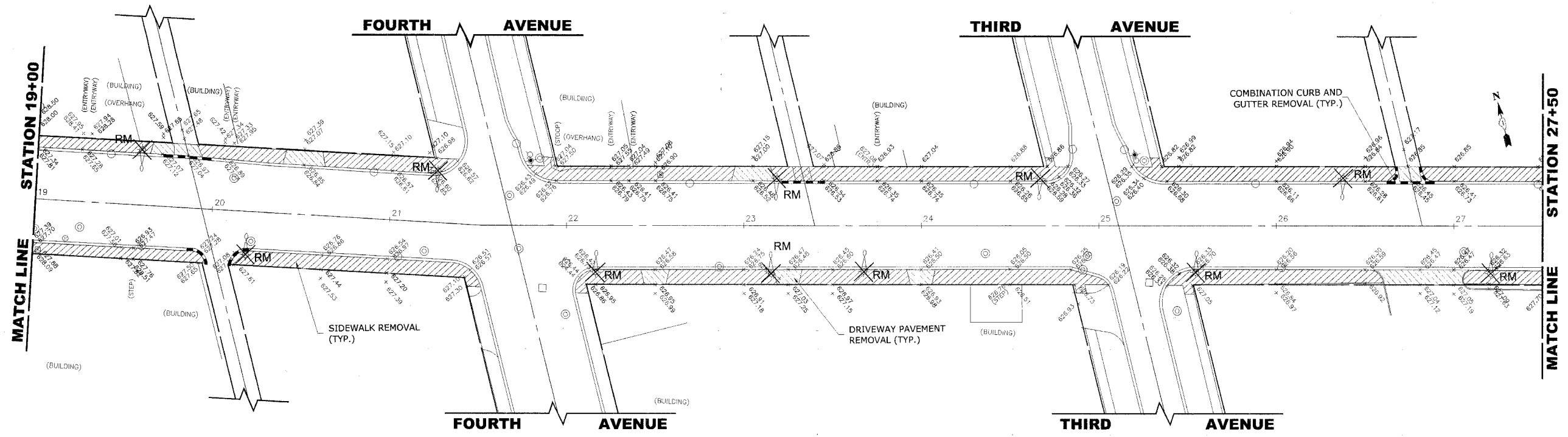
♦ Civil Engineers
 ♦ Municipal Consultants
 ♦ Established 1911
 9933 Roosevelt Road
 Westchester, Illinois 60154-2780
 Phone: 708/865-0300
 Fax: 708/865-1212

**LAKE STREET STREETSCAPE
VILLAGE OF MAYWOOD, ILLINOIS**

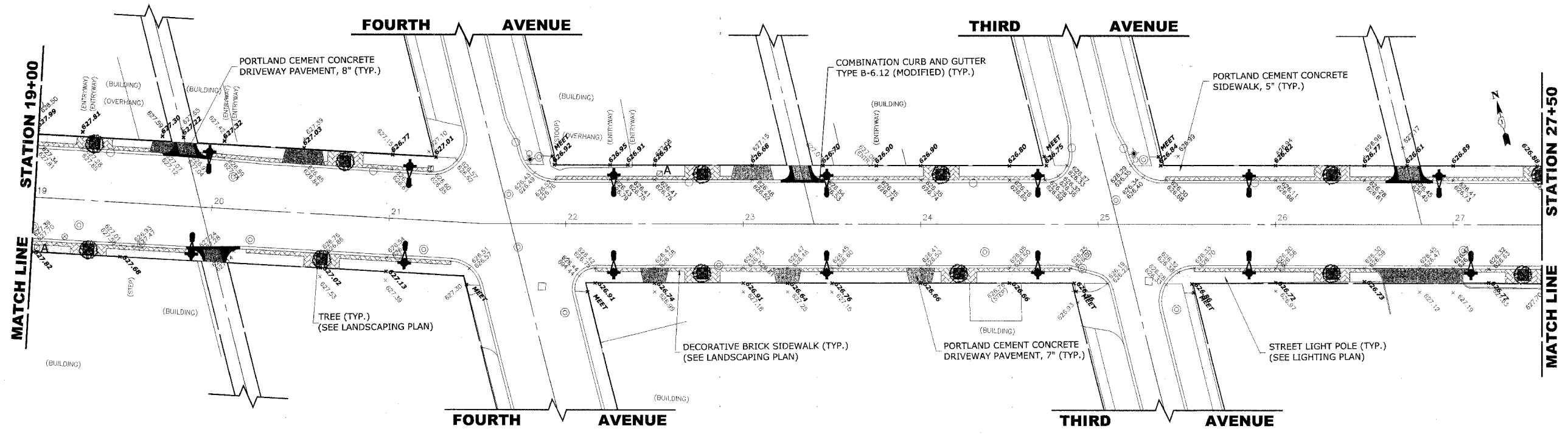
STREETSCAPING PLAN

SCALE:	1"=30'	SHEET 7 / 22
DRAWN BY:	LEV ECW	
BOOK NO.:	SDR33/1480/1484/LS	OF
DATE:	02/20/2008	
REVISION:	E.H.E. NO.: 565-06-15302	

ROUTE NO.	SECTION	COUNTY	TOTAL SHEETS	SHEET NO.
FAU 3537	**	COOK	22	8
ILLINOIS PROJECT		TE-00D1(753)		
VILLAGE SECTION		06-00122-00-SW		
CONTRACT NO. 83938				



EXISTING TOPOGRAPHY



PROPOSED IMPROVEMENTS

Drawing file: W:\Projects\0609153 - Lake St Streetscape.dwg Feb 20, 2008 4:30pm



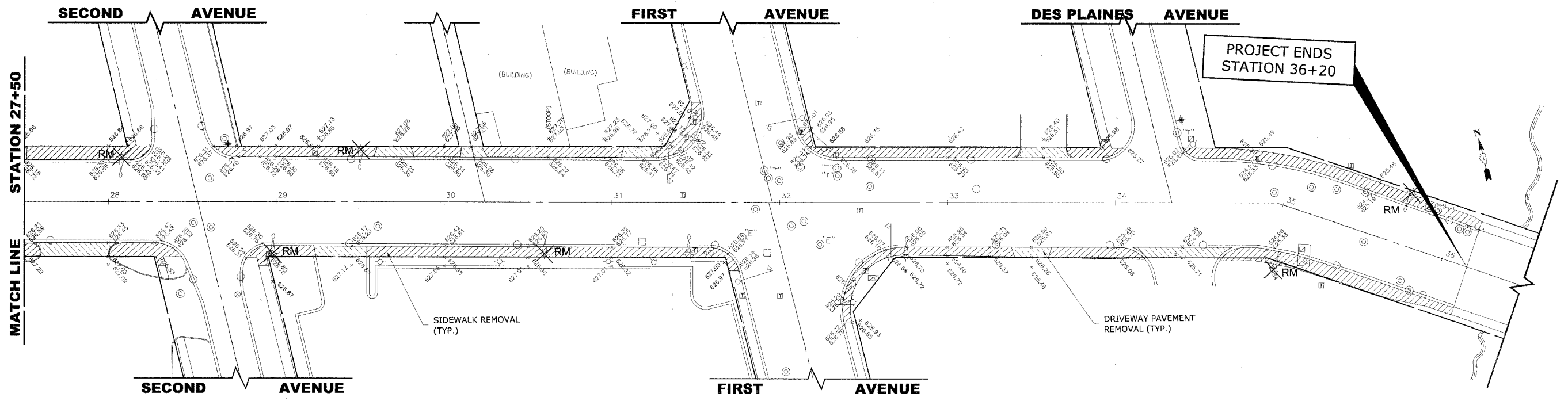
♦ Civil Engineers
 ♦ Municipal Consultants
 ♦ Established 1911
 9933 Roosevelt Road
 Westchester, Illinois 60154-2780
 Phone: 708/865-0300
 Fax: 708/865-1212

**LAKE STREET STREETSCAPE
VILLAGE OF MAYWOOD, ILLINOIS**

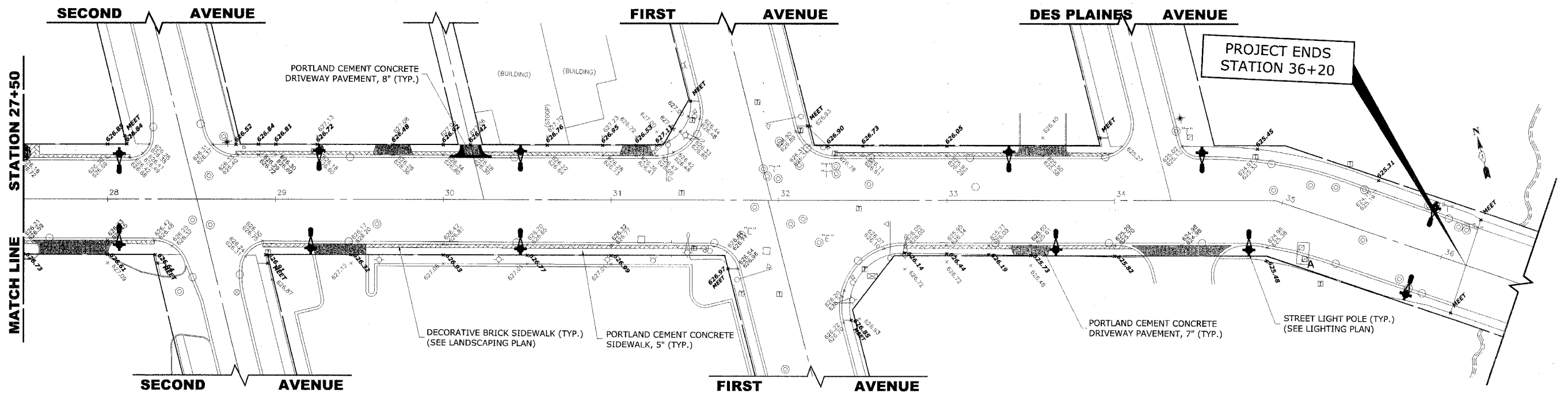
STREETSCAPING PLAN

SCALE:	1"=30'	SHEET	8
DRAWN BY:	LEV ECW		
BOOK NO.:	SDR33/1480/1484/LS	22	OF
DATE:	02/20/2008		
REVISION:		E.H.E. NO.: 565-06-15302	

ROUTE NO.	SECTION	COUNTY	TOTAL SHEETS	SHEET NO.
FAU 3537	**	COOK	22	9
ILLINOIS PROJECT		TE-00D1(753)		
VILLAGE SECTION		06-00122-00-SW		
CONTRACT NO. 83938				



EXISTING TOPGRAPHY



PROPOSED IMPROVEMENTS

Drawing file: W:\Projects\96506153 - Lake St Streetscape\Lake St Streetscaping.dwg Feb 20, 2008 - 4:30pm

HANCOCK ENGINEERING

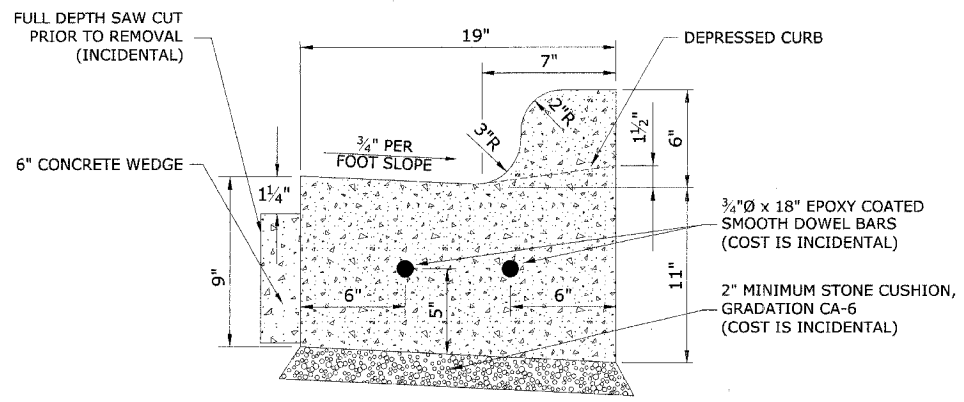
- ◆ Civil Engineers
- ◆ Municipal Consultants
- ◆ Established 1911

9933 Roosevelt Road
Westchester, Illinois 60154-2780
Phone: 708/865-0300
Fax: 708/865-1212

**LAKE STREET STREETSCAPE
VILLAGE OF MAYWOOD, ILLINOIS**

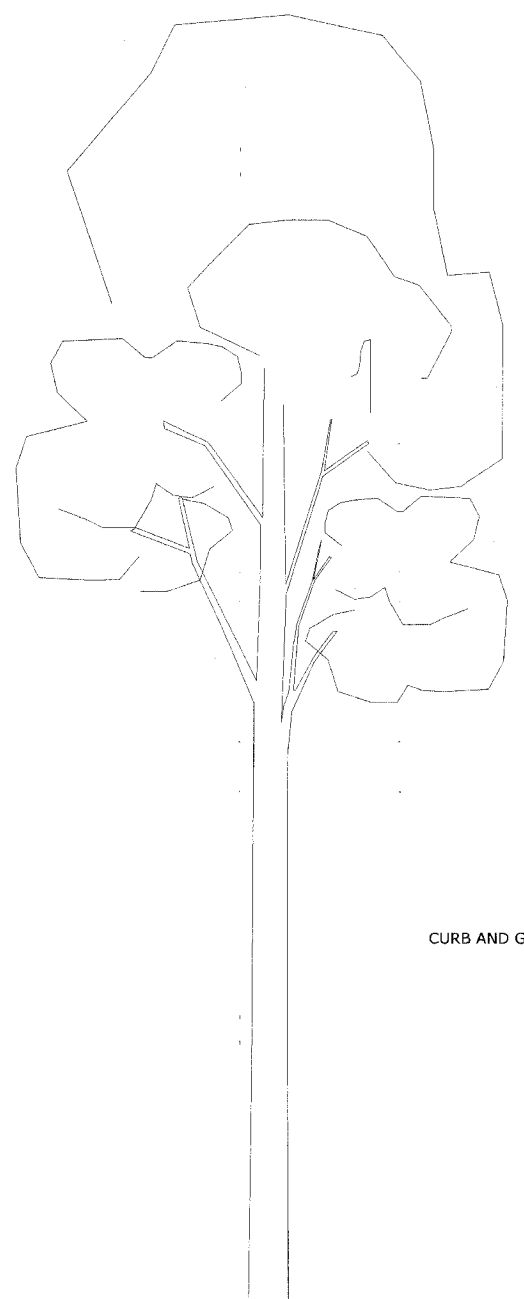
STREETSCAPING PLAN

SCALE:	1"=30'	SHEET 9 OF 22
DRAWN BY:	LEV ECW	
BOOK NO.:	S0R33/1480/1484/LS	
DATE:	02/20/2008	
E.H.E. NO.:	565-06-15302	



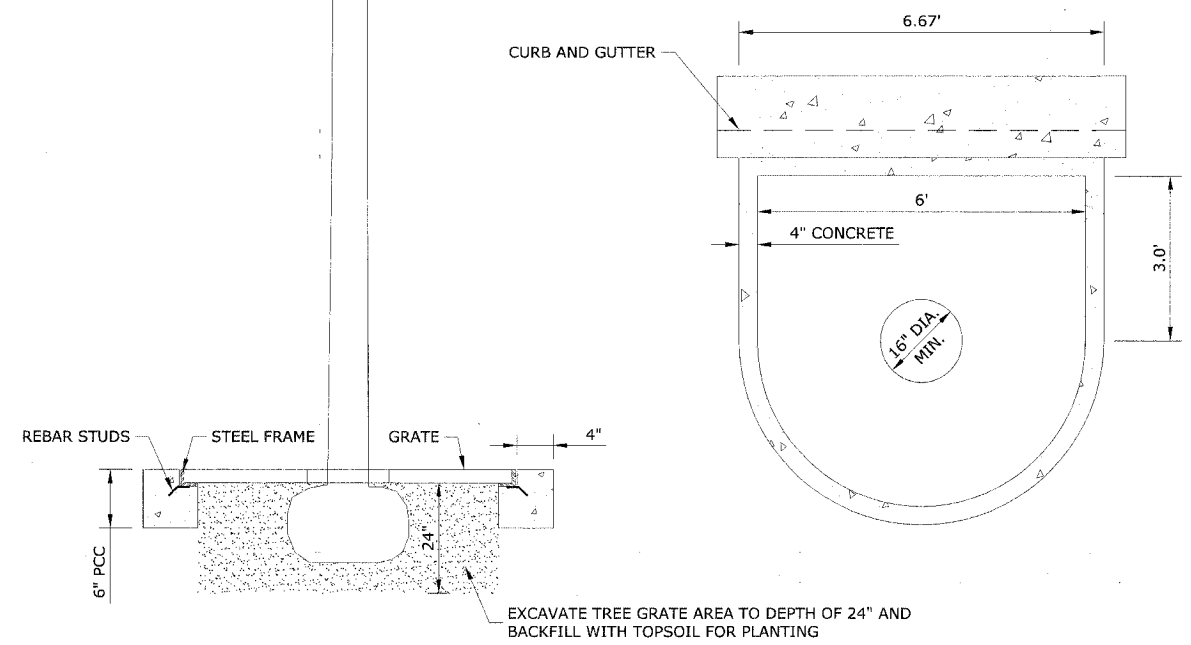
1. PROVIDE 2 3/4"Ø EPOXY COATED SMOOTH BARS WITH PLASTIC EXPANSION CAPS AT EACH EXPANSION JOINT WHICH SHALL BE LOCATED ON EACH SIDE OF EXISTING DRAINAGE STRUCTURES, AT PCS AND WHERE DIRECTED BY ENGINEER.
2. CONTRACTION JOINTS SHALL BE PLACED AT EQUAL SPACES (EVERY FIFTEEN FEET) IN THE UPPER 1/3 OF CURB AND GUTTERS WITHIN 24 HOURS OF PLACEMENT.
3. 6" CONCRETE WEDGE TO BE POURED IN THE SPACE BETWEEN THE NEW CURB AND THE EXISTING PAVEMENT, AFTER THE CURB HAS REACHED ITS INITIAL SET.
4. THE NEW CURB AND GUTTER SHALL BE BACKFILLED FOR THE FULL-DEPTH OF THE CURB WITH CA-7 OR OTHER STONE APPROVED BY ENGINEER.
5. THE COST OF THE ABOVE SHALL BE CONSIDERED INCIDENTAL TO THE COMBINATION CONCRETE CURB AND GUTTER ITEM.

**COMBINATION CONCRETE CURB & GUTTER
TYPE B-6.12 (MODIFIED)**



GENERAL NOTES

1. THE CONTRACTOR SHALL SAW CUT ALL PCC SIDEWALKS WHERE PARTIAL REMOVAL IS SHOWN (INCLUDED IN CONTRACT).
2. THE CONTRACTOR SHALL SAW CUT ALL BUTT JOINTS TO ADJOINING PAVEMENTS NOT MORE THAN 24 HOURS PRIOR TO PLACING SURFACE COURSE.
3. THE CONTRACTOR SHALL SAW CUT THE PAVEMENT FULL DEPTH SIX INCHES (6") IN FRONT OF ALL CURB & GUTTER TO BE REMOVED PRIOR TO REMOVAL. NO ADDITIONAL COMPENSATION WILL BE ALLOWED.
4. IT SHALL BE THE CONTRACTOR'S RESPONSIBILITY TO TAKE PRECAUTIONS SO AS NOT TO DAMAGE PARKWAYS AND CURB OUTSIDE THE PRESCRIBED LIMITS OF RESTORATION. NO PARKWAY OR CURB RESTORATION IS INCLUDED FOR PAYMENT EXCEPT AS NECESSARY FOR REPLACEMENT, OR AS DIRECTED BY ENGINEER.
5. STOCKPILING OF MATERIALS ON THE PARKWAYS OR CURB WILL NOT BE ALLOWED, INCLUDING EXCAVATED MATERIAL OR TRENCH BACKFILL MATERIAL. THE CONTRACTOR SHALL BE RESPONSIBLE FOR RESTORING ANY DAMAGE TO THE PARKWAY OR SOD OUTSIDE OF THE PRESCRIBED LIMITS TO THE SATISFACTION OF THE ENGINEER AND THE VILLAGE AT HIS OWN EXPENSE.

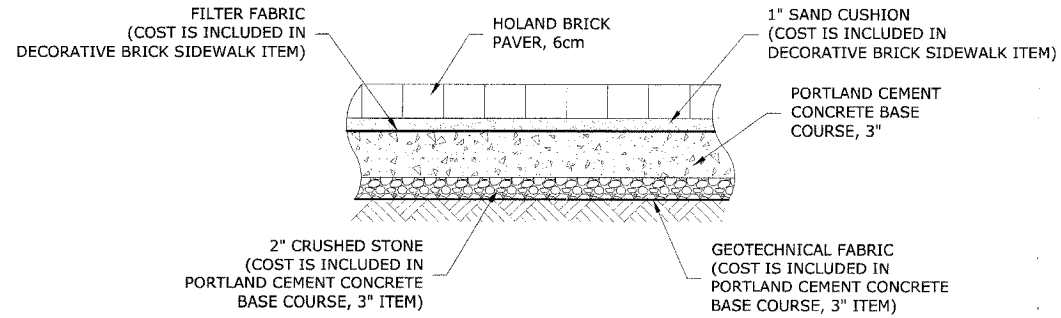


- FRAME TO BE:**
1. EAST JORDAN NUMBER: 8677 & 8678 AND FRAME COMBINATION
 2. NEENAH R-8939 AND FRAME
 3. OR EQUAL

CAST IRON TREE GRATES

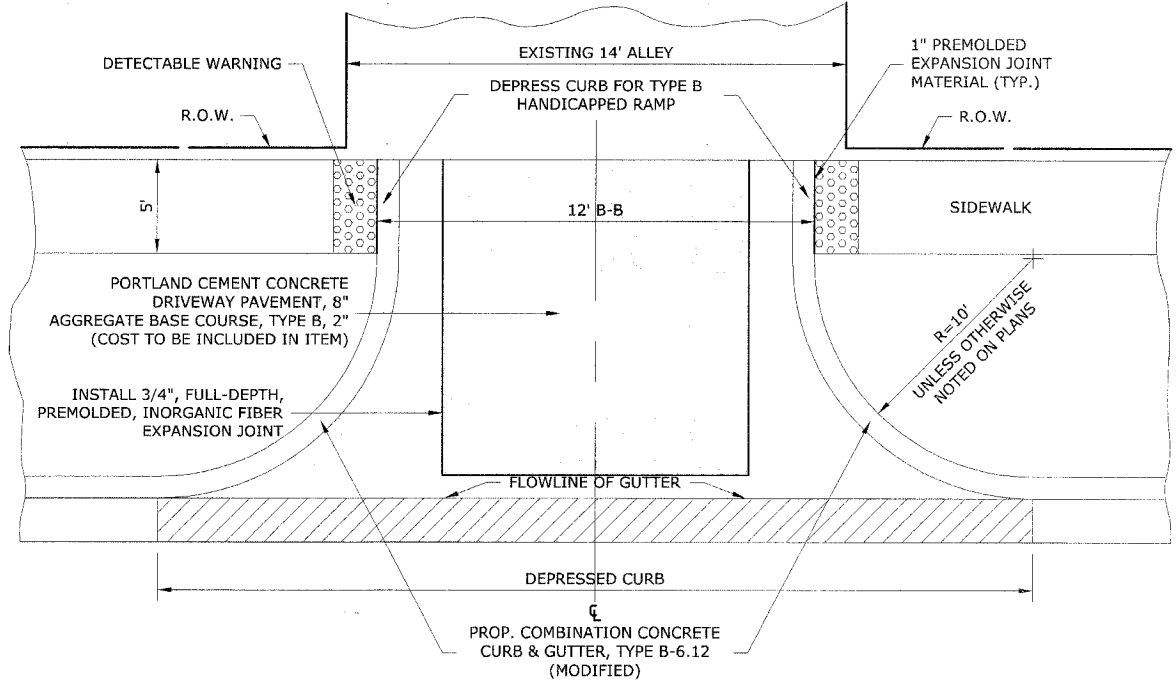
Drawing file: W:\Projects\65506153 - Lake St Streetscape\Formwork Details.dwg Feb 20, 2008 - 4:23pm

ROUTE NO.	SECTION	COUNTY	TOTAL SHEETS	SHEET NO.
FAU 3537	**	COOK	22	11
ILLINOIS PROJECT		TE-00D1(753)		
VILLAGE SECTION		06-00122-00-SW		
CONTRACT NO. 83938				



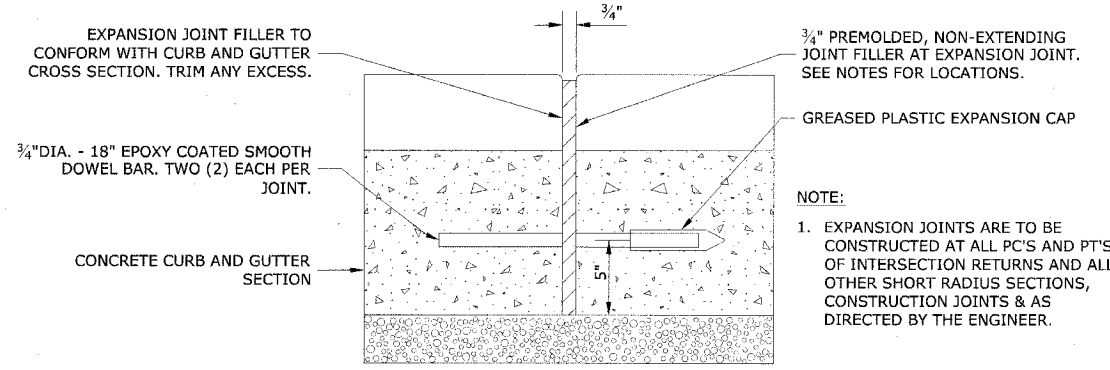
1. THE CONTRACTOR SHALL PROVIDE ALL LABOR/MATERIALS REQUIRED TO EXCAVATE, INSTALL BASE, SAND SETTING BED, EDGE RESTRAINT, AND PAVERS AT LOCATIONS SHOWN ON PLANS AND AS DIRECTED BY ENGINEER.
2. PAVERS SHALL MEET THE REQUIREMENTS OF ASTM C-936.
3. BASE COURSE MATERIAL SHALL CONSIST OF PORTLAND CEMENT CONCRETE BASE.
4. THE PAVERS SHALL BE INSTALLED IN A HERRINGBONE - 45° OR 90° STYLE.

DECORTIVE BRICK SIDEWALK

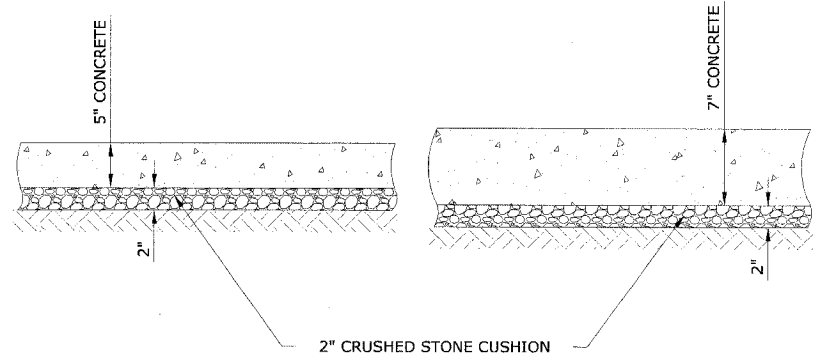


NOTE: UNLESS OTHERWISE NOTED ON PLAN USE RADII AS MARKED ABOVE.

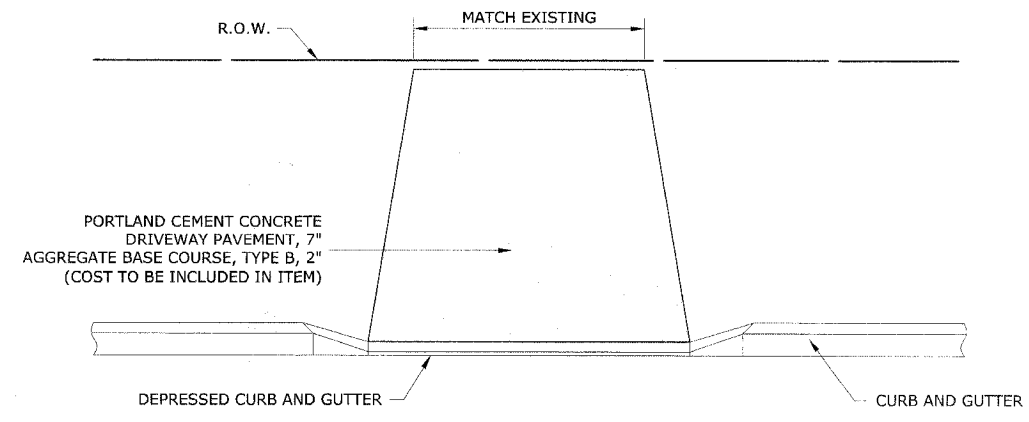
CONCRETE ALLEY RETURN



TYPICAL CURB AND GUTTER EXPANSION JOINT



SIDEWALK & DRIVEWAY CROSS SECTION



PORTLAND CEMENT CONCRETE DRIVEWAY PAVEMENT, 7"

Drawing File: W:\Projects\56506153 - Lake St Streetscape\Roadway Details.dwg Feb 20, 2008 - 4:31pm



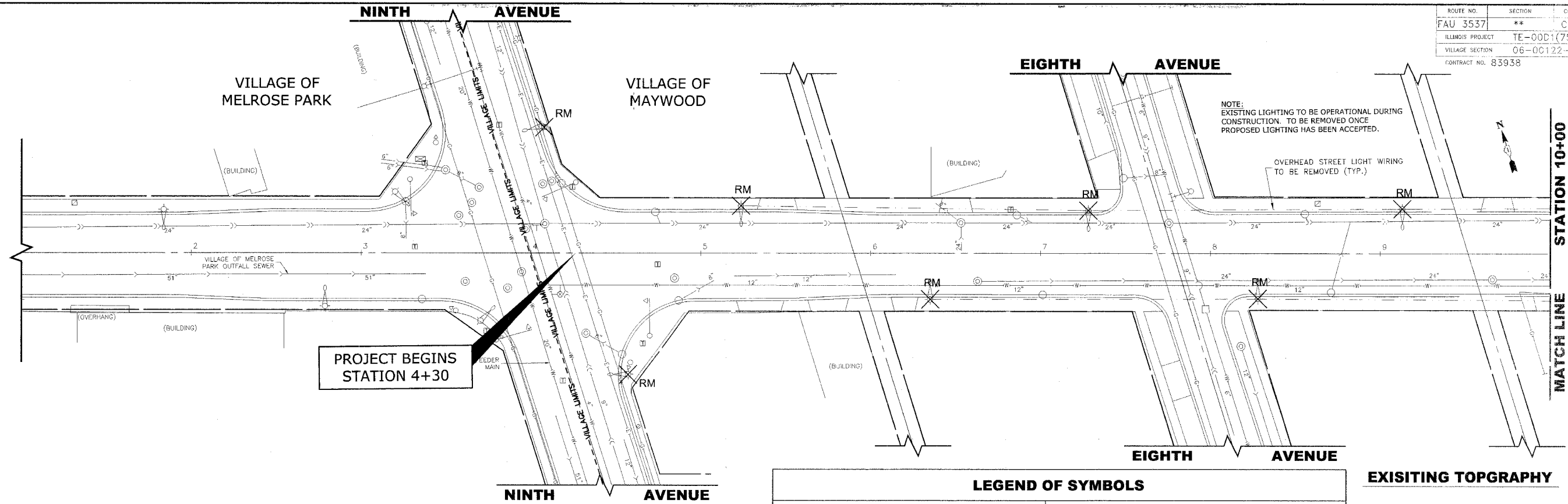
◆ Civil Engineers
 ◆ Municipal Consultants
 ◆ Established 1911

9933 Roosevelt Road
 Westchester, Illinois 60154-2780
 Phone: 708/865-0300
 Fax: 708/865-1212

**LAKE STREET STREETSCAPE
 VILLAGE OF MAYWOOD, ILLINOIS**

ROADWAY DETAILS

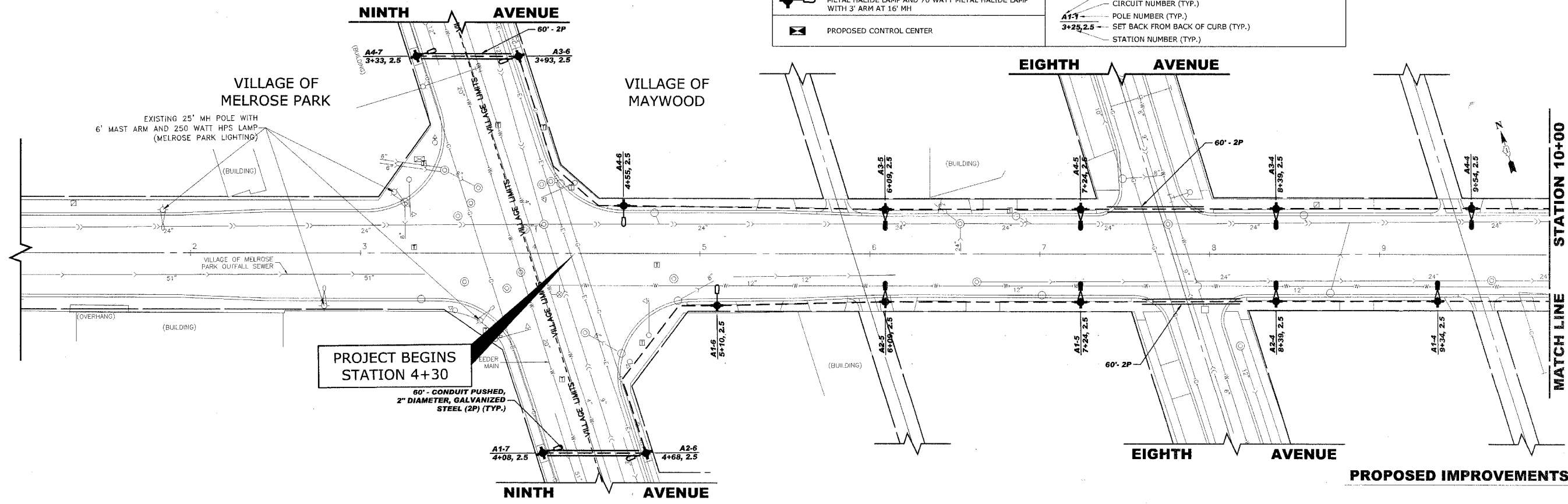
SCALE:	NONE	SHEET 11 OF 22
DRAWN BY:	LEV ECW	
BOOK NO.:	SDR33/1480/1484/LS	
DATE:	02/20/2008	
REVISION:		E.H.E. NO.: 565-06-15302



PROJECT BEGINS STATION 4+30

LEGEND OF SYMBOLS	
	EXISTING LIGHT POLE AND FIXTURE
	PROPOSED 30' MH POLE WITH 6' SCROLL ARM & 150 WATT METAL HALIDE LAMP AND 70 WATT METAL HALIDE LAMP WITH 3' ARM AT 16' MH
	PROPOSED 30' MH POLE WITH 6' SCROLL ARM & 175 WATT METAL HALIDE LAMP AND 70 WATT METAL HALIDE LAMP WITH 3' ARM AT 16' MH
	PROPOSED 30' MH POLE WITH 6' SCROLL ARM & 400 WATT METAL HALIDE LAMP AND 70 WATT METAL HALIDE LAMP WITH 3' ARM AT 16' MH
	PROPOSED CONTROL CENTER
	EXISTING OVERHEAD STREET LIGHT WIRING
	PROPOSED UNIT DUCT WITH 3-1/2 No.4 & 1-1/2 No.6 GROUND, 600V (XLP-TYPE USE), 1 1/4" DIAMETER OR AS NOTED, BORED & PULLED OR AS NOTED
	PROPOSED GALVANIZED STEEL CONDUIT IN TRENCH OR PUSHED AS NOTED
	CONTROLLER IDENTIFICATION (TYP.)
	CIRCUIT NUMBER (TYP.)
	POLE NUMBER (TYP.)
	SET BACK FROM BACK OF CURB (TYP.)
	STATION NUMBER (TYP.)

EXISTING TOPGRAPHY



PROJECT BEGINS STATION 4+30

60" - CONDUIT PUSHED, 2" DIAMETER, GALVANIZED STEEL (2P) (TYP.)

PROPOSED IMPROVEMENTS

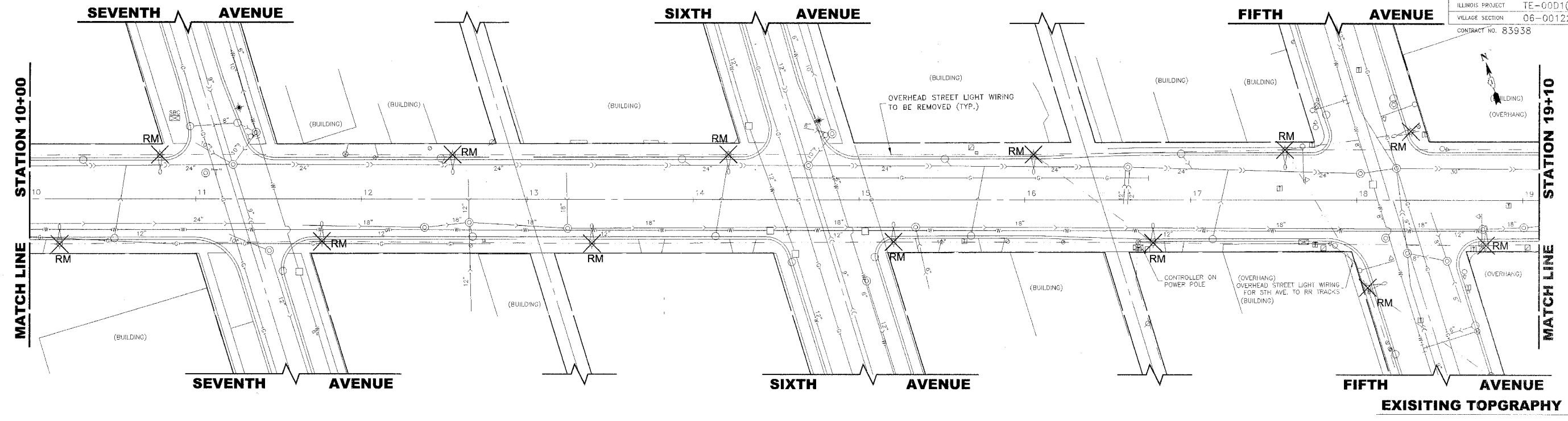
Drawing file: W:\Projects\56506153 - Lake St Streetscape\Lake St Streetscape.dwg Feb 20, 2008 - 4:30pm

	◆ Civil Engineers	9933 Roosevelt Road
	◆ Municipal Consultants	Westchester, Illinois 60154-2780
	◆ Established 1911	Phone: 708/865-0300
		Fax: 708/865-1212

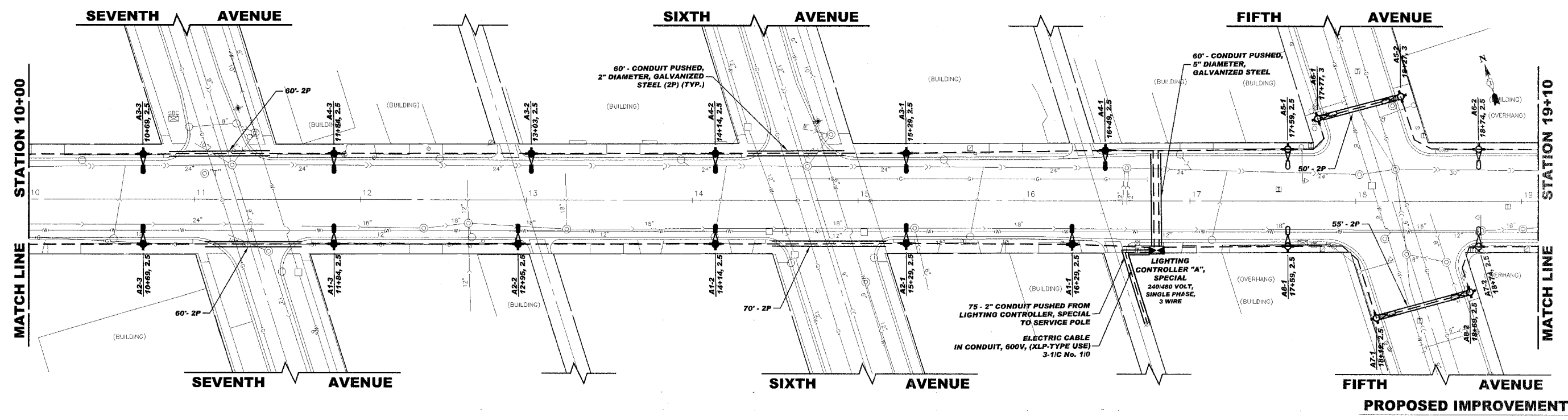
**LAKE STREET STREETSCAPE
VILLAGE OF MAYWOOD, ILLINOIS**

LIGHTING PLAN

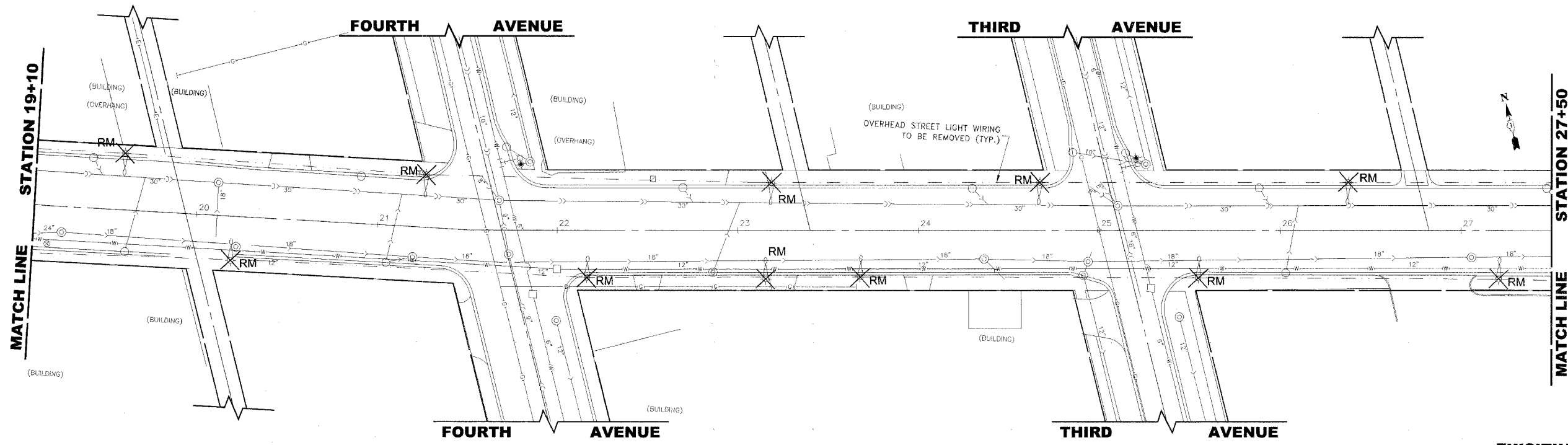
SCALE:	1"=30'	SHEET 12
DRAWN BY:	LEV ECW	
BOOK NO.:	SDR33/1480/1484/1.S	OF 22
DATE:	02/20/2008	
REVISION:	E.H.E. NO.: 565-06-15302	



	EXISTING LIGHT POLE AND FIXTURE		EXISTING OVERHEAD STREET LIGHT WIRING
	PROPOSED 30' MH POLE WITH 6' SCROLL ARM & 150 WATT METAL HALIDE LAMP AND 70 WATT METAL HALIDE LAMP WITH 3' ARM AT 16' MH		PROPOSED UNIT DUCT WITH 3-1/C No.4 & 1-1/C No.6 GROUND, 600V (XLP-(TYPE USE)), 1 1/4" DIAMETER OR AS NOTED, BORED & PULLED OR AS NOTED
	PROPOSED 30' MH POLE WITH 6' SCROLL ARM & 175 WATT METAL HALIDE LAMP AND 70 WATT METAL HALIDE LAMP WITH 3' ARM AT 16' MH		PROPOSED GALVANIZED STEEL CONDUIT IN TRENCH OR PUSHED AS NOTED
	PROPOSED 30' MH POLE WITH 6' SCROLL ARM & 400 WATT METAL HALIDE LAMP AND 70 WATT METAL HALIDE LAMP WITH 3' ARM AT 16' MH		CONTROLLER IDENTIFICATION (TYP.)
	PROPOSED CONTROL CENTER		CIRCUIT NUMBER (TYP.)
			POLE NUMBER (TYP.)
			SET BACK FROM BACK OF CURB (TYP.)
			STATION NUMBER (TYP.)

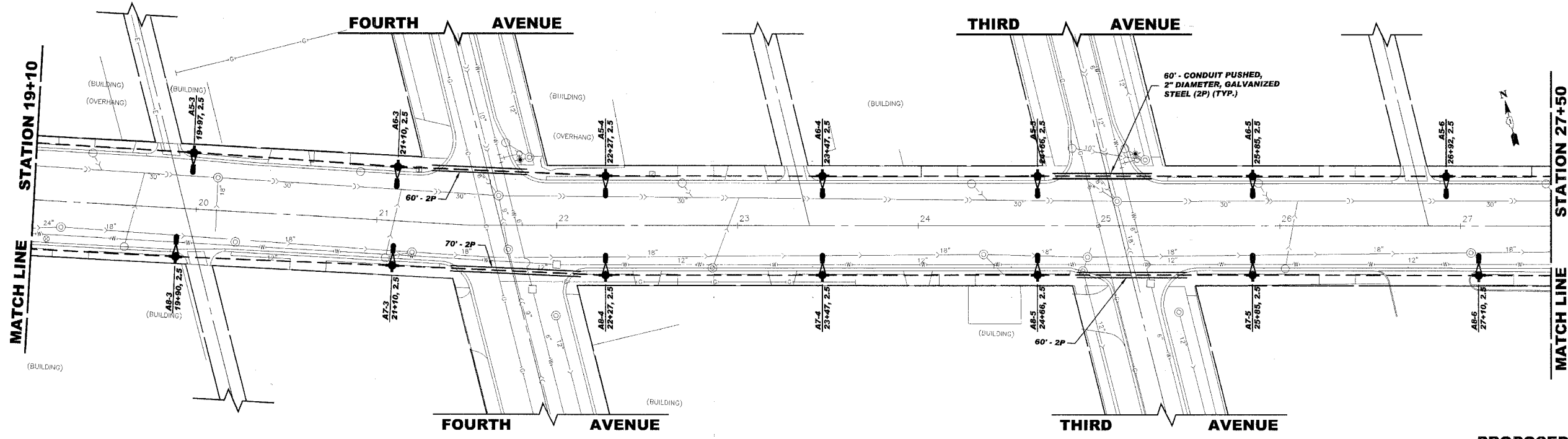


Drawing file: W:\Projects\56550\53 - Lake St Streetscape\Lake St Streetscape.dwg Feb 20, 2008 - 4:30pm



EXISTING TOPGRAPHY

LEGEND OF SYMBOLS	
	EXISTING LIGHT POLE AND FIXTURE
	PROPOSED 30' MH POLE WITH 6' SCROLL ARM & 150 WATT METAL HALIDE LAMP AND 70 WATT METAL HALIDE LAMP WITH 3' ARM AT 16' MH
	PROPOSED 30' MH POLE WITH 6' SCROLL ARM & 175 WATT METAL HALIDE LAMP AND 70 WATT METAL HALIDE LAMP WITH 3' ARM AT 16' MH
	PROPOSED 30' MH POLE WITH 6' SCROLL ARM & 400 WATT METAL HALIDE LAMP AND 70 WATT METAL HALIDE LAMP WITH 3' ARM AT 16' MH
	PROPOSED CONTROL CENTER
	EXISTING OVERHEAD STREET LIGHT WIRING
	PROPOSED UNIT DUCT WITH 3-1/2" No. 4 & 1-1/2" No. 6 GROUND, 600V (XLP-(TYPE USE)), 1 1/4" DIAMETER OR AS NOTED, BORED & PULLED OR AS NOTED
	PROPOSED GALVANIZED STEEL CONDUIT IN TRENCH OR PUSHED AS NOTED
	CONTROLLER IDENTIFICATION (TYP.)
	CIRCUIT NUMBER (TYP.)
	POLE NUMBER (TYP.)
	SET BACK FROM BACK OF CURB (TYP.)
	STATION NUMBER (TYP.)



PROPOSED IMPROVEMENTS

Drawing File: W:\Projects\55006153 - Lake St. Streetscape\Lake St. Streetscape.dwg Feb 20, 2008 - 4:30pm

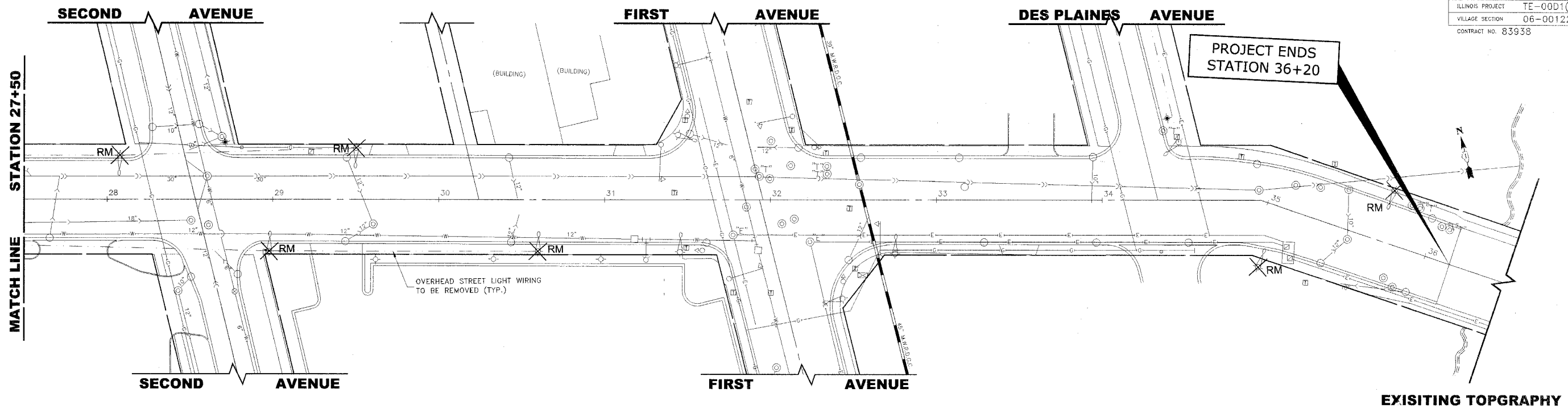


♦ Civil Engineers
 ♦ Municipal Consultants
 ♦ Established 1911
 9933 Roosevelt Road
 Westchester, Illinois 60154-2780
 Phone: 708/865-0300
 Fax: 708/865-1212

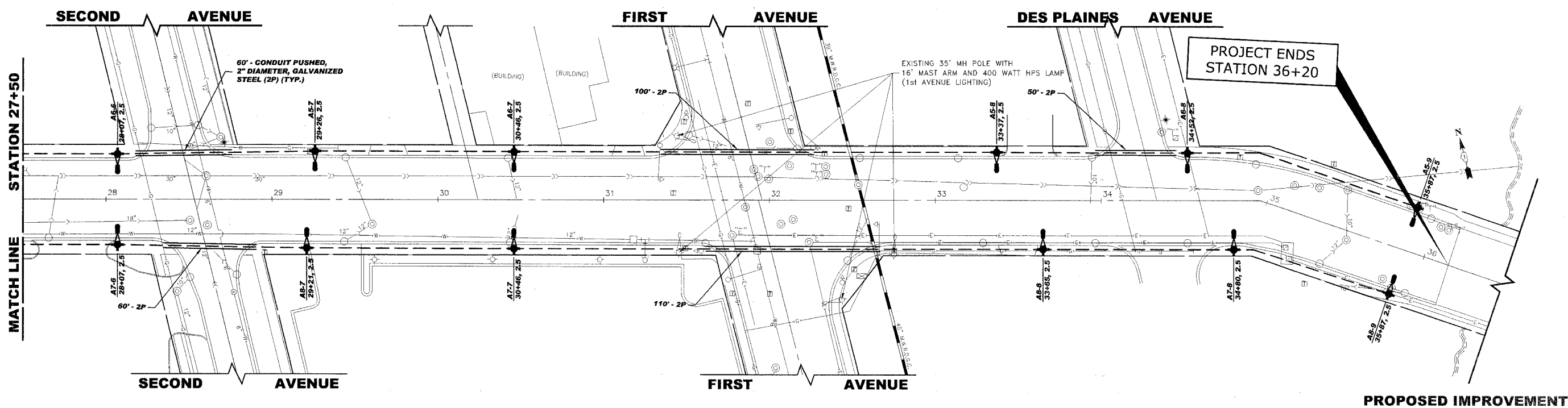
**LAKE STREET STREETSCAPE
VILLAGE OF MAYWOOD, ILLINOIS**

LIGHTING PLAN

SCALE:	1"=30'	SHEET	14
DRAWN BY:	LEV ECW		
BOOK NO.:	SDR33/1480/1484/LS	OF	22
DATE:	02/20/2008		
REVISION:	E.H.E. NO.: 565-06-13302		



LEGEND OF SYMBOLS	
	EXISTING LIGHT POLE AND FIXTURE
	PROPOSED 30' MH POLE WITH 6' SCROLL ARM & 150 WATT METAL HALIDE LAMP AND 70 WATT METAL HALIDE LAMP WITH 3' ARM AT 16' MH
	PROPOSED 30' MH POLE WITH 6' SCROLL ARM & 175 WATT METAL HALIDE LAMP AND 70 WATT METAL HALIDE LAMP WITH 3' ARM AT 16' MH
	PROPOSED 30' MH POLE WITH 6' SCROLL ARM & 400 WATT METAL HALIDE LAMP AND 70 WATT METAL HALIDE LAMP WITH 3' ARM AT 16' MH
	PROPOSED CONTROL CENTER
	EXISTING OVERHEAD STREET LIGHT WIRING
	PROPOSED UNIT DUCT WITH 3-1/C No.4 & 1-1/C No.6 GROUND, 600V (XLP-(TYPE USE)), 1 1/4" DIAMETER OR AS NOTED, BORED & PULLED OR AS NOTED
	PROPOSED GALVANIZED STEEL CONDUIT IN TRENCH OR PUSHED AS NOTED
	CONTROLLER IDENTIFICATION (TYP.)
	CIRCUIT NUMBER (TYP.)
	POLE NUMBER (TYP.)
	SET BACK FROM BACK OF CURB (TYP.)
	STATION NUMBER (TYP.)



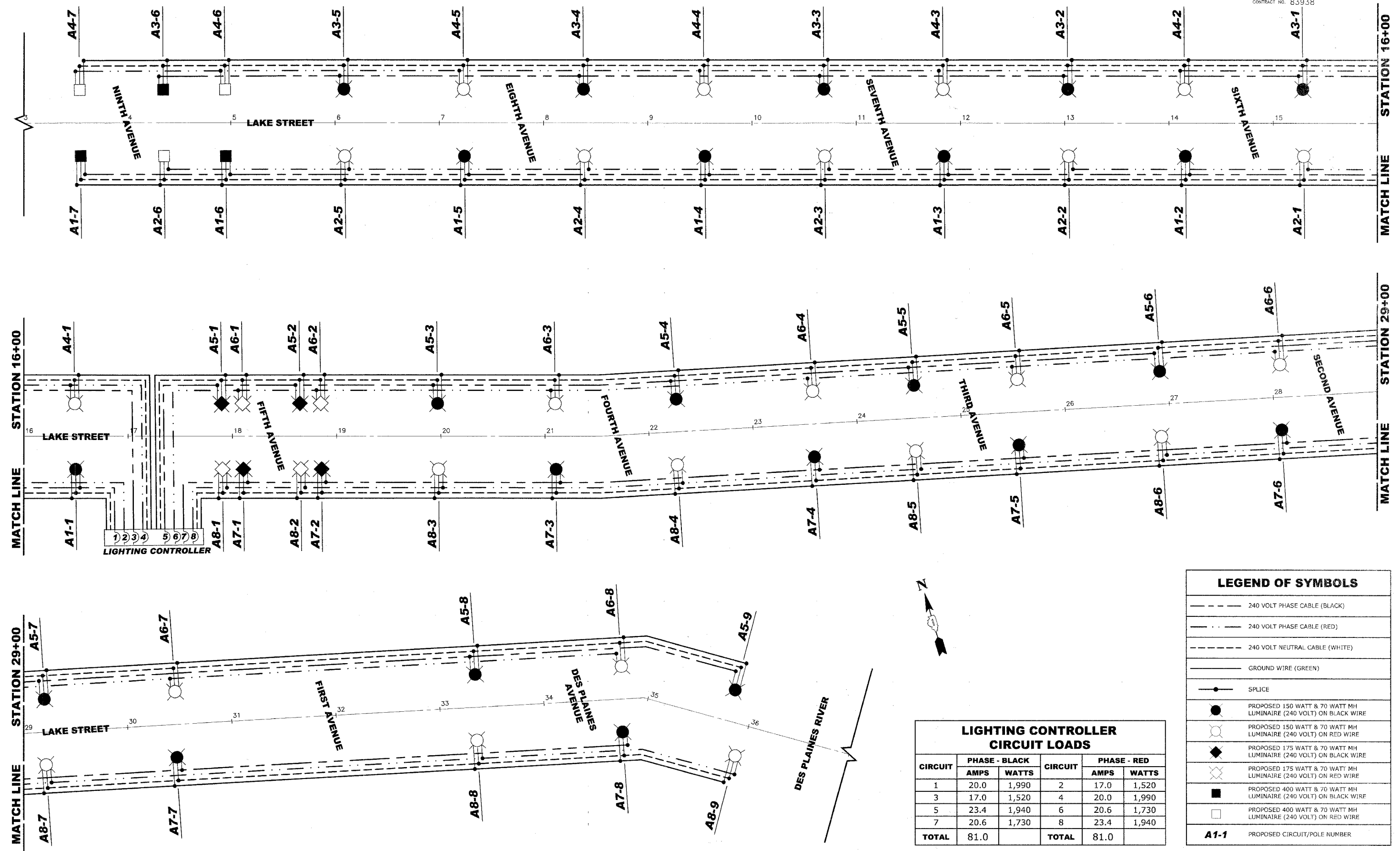
Drawing File: W:\Projects\56506153 - Lake St Streetscape\Lake St Streetscape.dwg Feb 20, 2008 4:30pm

	◆ Civil Engineers	9933 Roosevelt Road
	◆ Municipal Consultants	Westchester, Illinois 60154-2780
	◆ Established 1911	Phone: 708/865-0300
		Fax: 708/865-1212

**LAKE STREET STREETScape
VILLAGE OF MAYWOOD, ILLINOIS**

LIGHTING PLAN

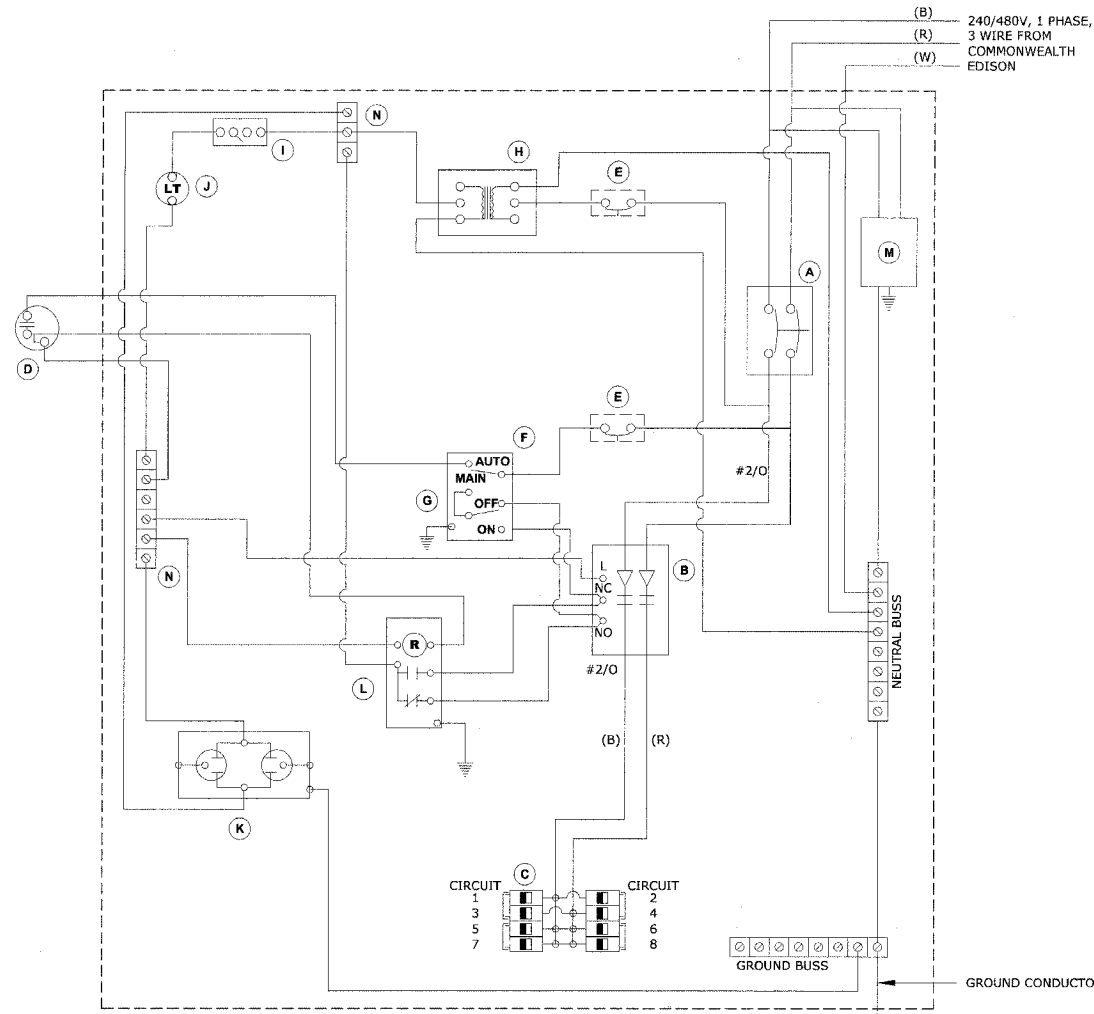
SCALE:	1"=30'	SHEET
DRAWN BY:	LEV ECW	
BOOK NO.:	SDR33/1480/1484/LS	15
DATE:	02/20/2008	
E.H.E. NO.:	565-06-15302	22
REVISION:		



CIRCUIT	PHASE - BLACK		CIRCUIT	PHASE - RED	
	AMPS	WATTS		AMPS	WATTS
1	20.0	1,990	2	17.0	1,520
3	17.0	1,520	4	20.0	1,990
5	23.4	1,940	6	20.6	1,730
7	20.6	1,730	8	23.4	1,940
TOTAL	81.0		TOTAL	81.0	

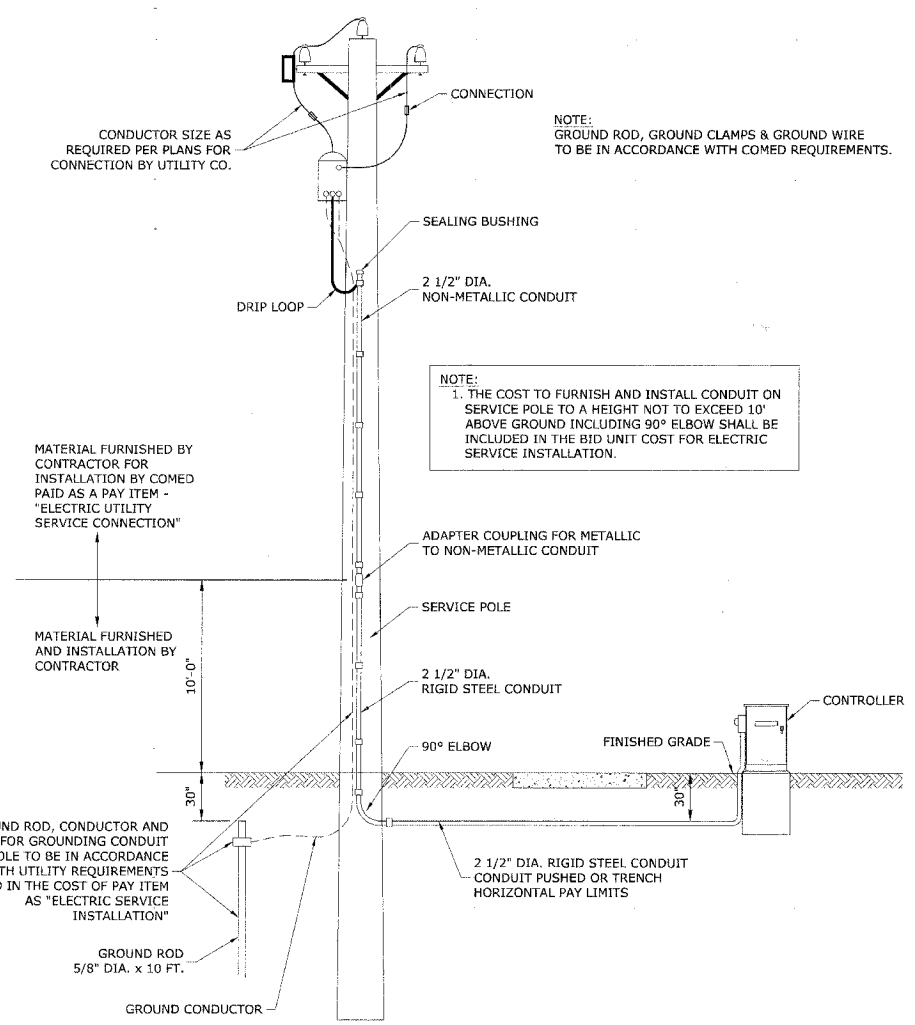
	240 VOLT PHASE CABLE (BLACK)
	240 VOLT PHASE CABLE (RED)
	240 VOLT NEUTRAL CABLE (WHITE)
	GROUND WIRE (GREEN)
	SPLICE
	PROPOSED 150 WATT & 70 WATT MH LUMINAIRE (240 VOLT) ON BLACK WIRE
	PROPOSED 150 WATT & 70 WATT MH LUMINAIRE (240 VOLT) ON RED WIRE
	PROPOSED 175 WATT & 70 WATT MH LUMINAIRE (240 VOLT) ON BLACK WIRE
	PROPOSED 175 WATT & 70 WATT MH LUMINAIRE (240 VOLT) ON RED WIRE
	PROPOSED 400 WATT & 70 WATT MH LUMINAIRE (240 VOLT) ON BLACK WIRE
	PROPOSED 400 WATT & 70 WATT MH LUMINAIRE (240 VOLT) ON RED WIRE
	PROPOSED 400 WATT & 70 WATT MH LUMINAIRE (240 VOLT) ON RED WIRE
A1-1	PROPOSED CIRCUIT/POLE NUMBER

Drawing File: \\N:\Projects\56506153 - Lake St Streetscape\Lake St Streetscape.dwg Feb 20, 2008 - 4:32pm



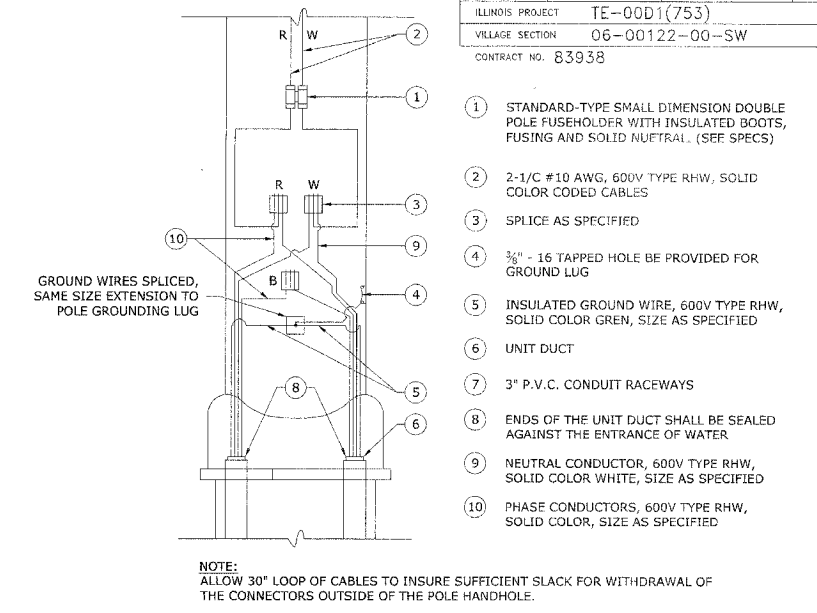
QUANTITY		DESCRIPTION
(A)	1	150 AMP CIRCUIT BREAKER, MOLDED CASE, THERMAL MAGNETIC, 2-POLE, SINGLE THROW, 600V FRAME, NON-INTERCHANGABLE TRIP, BOLT ON TYPE.
(B)	1	150 AMP, ELECTRICALLY OPERATED AND MECHANICALLY HELD LIGHTING CONTRACTOR, 2-POLE, 600 VOLT WITH 240 VOLT COIL.
(C)	8	120/240 VOLT 1 PHASE PANEL BOARD WITH 150 AMP COPPER MAINS SINGLE POLE, 40 AMP, 277 VOLT BOLT ON BRANCH CIRCUIT BREAKERS
(D)	1	PHOTO-ELECTRIC CELL, 240 VOLT, MOUNT ON UNDERSIDE OF CABINET VENT
(E)	2	THERMAL MAGNETIC, MOLDED CASE CIRCUIT BREAKER, 1 POLE, 15 AMP, 277 VOLT BOLT ON TYPE
(F)	1	CONTROL SWITCH, MOMENTARY CONTACT, SPDT, 15 AMP, 240 VOLT
(G)	1	CONTROL SWITCH, TOGGLE TYPE, SPDT, 20 AMP, 240 VOLT SPECIAL GRADE
(H)	1	240/120 VOLT STEP DOWN CONTROL TRANSFORMER 750 VA RATED
(I)	1	MICRO SWITCH (MOUNTED WITH ACTUATOR TO SWITCH WHEN DOOR IS OPEN) 240 VOLT, 20 AMP
(J)	1	60 WATT LIGHT FIXTURE VAPOR TIGHT WITH GLOBE, GUARD, AND MOUNTING BOX
(K)	1	240 VOLT, 15 AMP RECEPTACLE, SPECIFICATION GRADE IN NEMA 5-15R WEATHER PROOF BOX WITH FLAP-TYPE COVER. OUTLET TO BE GFI-TYPE.
(L)	1	POWER RELAY WITH 25 AMP CONTACTS RATED FOR CONTRACTOR INRUSH CURRENT - 240 VOLT COIL
(M)	1	SURGE ARRESTOR, 5 WIRE EDCC "4803" OR EQUAL
(N)	2	TERMINAL BLOCK, 240 VOLT, 50 AMP MAXIMUM WITH NUMBER OF TERMINALS AS INDICATED

240/480 VOLT CONTROLLER PANEL WIRING DIAGRAM

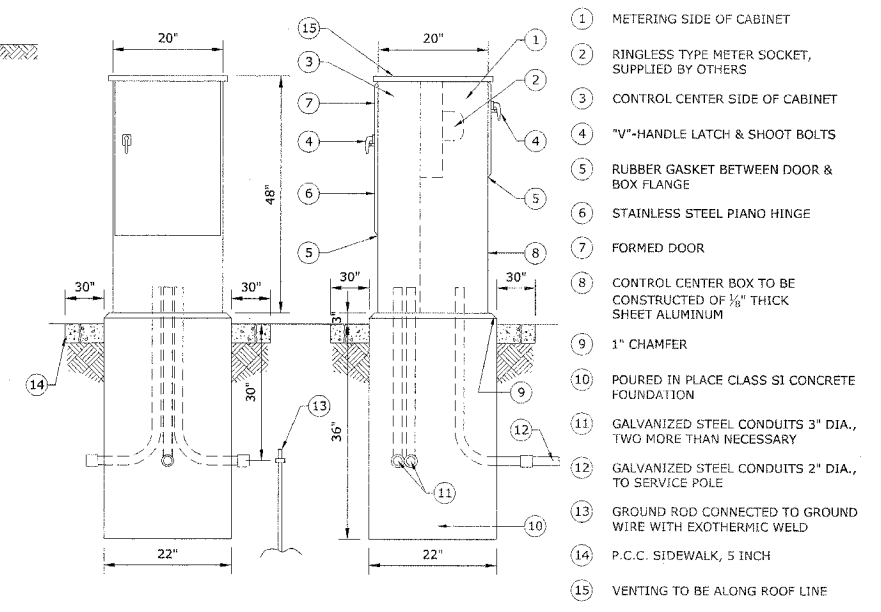


PROPOSED SERVICE INSTALLATION POLE TOP MOUNTED TRANSFORMER

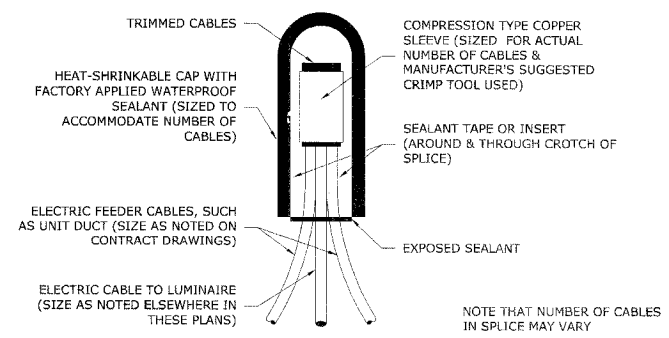
- NOTES:**
- ALL CIRCUIT BREAKERS SHALL HAVE AN INTERRUPT RATING OF 18,000 AMPS
 - UL LISTED DEVICES/COMPONENTS SHALL BE USED
 - NO SPLICES OF WIRES IN CABINET
 - CONTROL WIRE TO BE #12 MTW
 - POWER WIRE SHALL BE RATED RHH/RHW 600 VOLTS OF SIZE INDICATED
 - LIGHTING CONTROLLER SHALL BE SERVICE ENTRANCE RATED



POLE HANDHOLE WIRING DIAGRAM

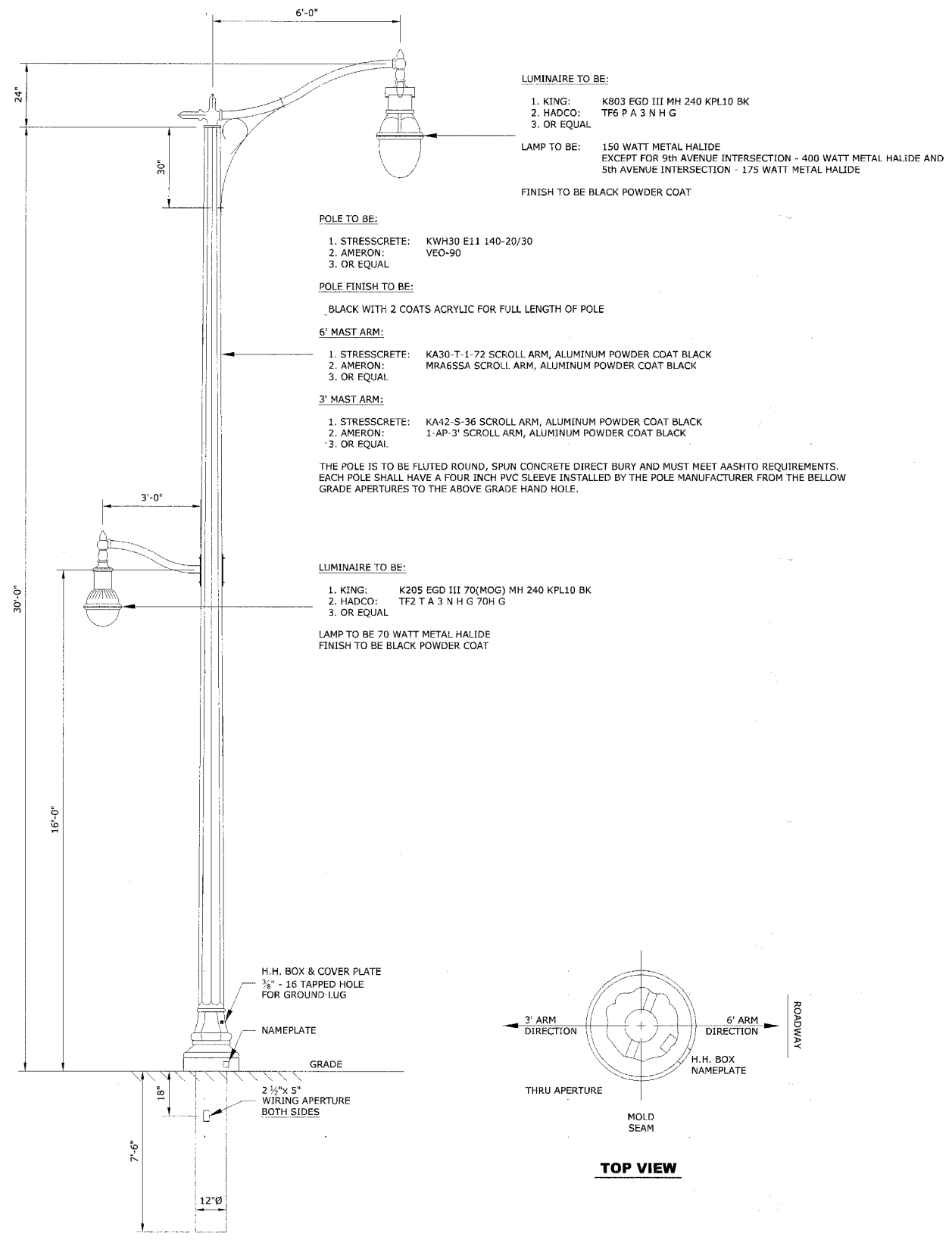


CONTROL CENTER CABINET & FOUNDATION



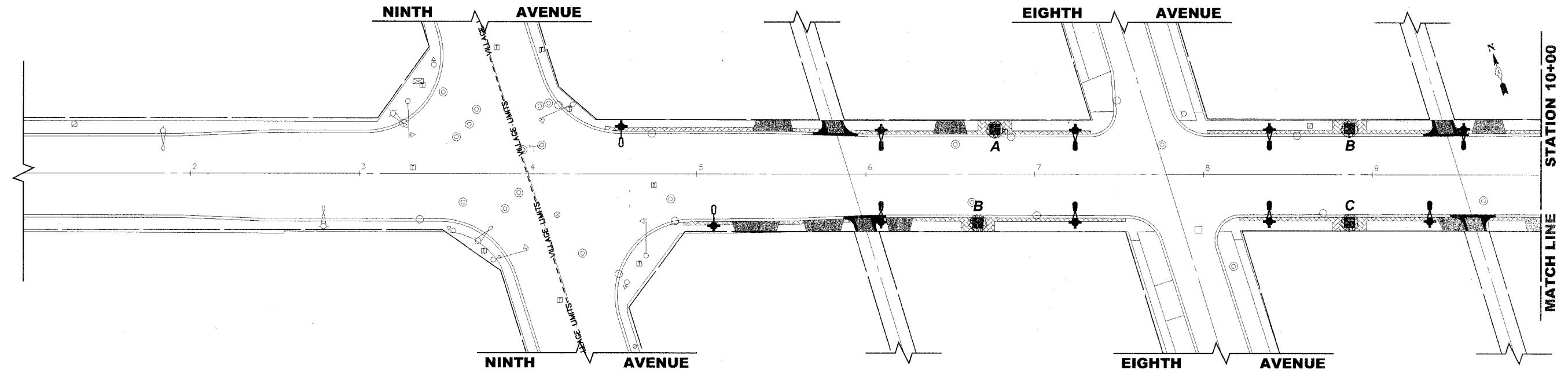
SPLICING ELECTRIC CABLES BASIC MATERIALS AND METHODS

Drawing file: w:\Projects\25506153 - Lake St. Streetscape\Lighting Details.dwg Feb 21, 2008 - 10:10am



**DECORATIVE LIGHT POLE, CONCRETE,
30' MOUNTING HEIGHT WITH 1 - 6' MAST ARM AND 1 - 3' MAST ARM**

Drawing file: W:\Projects\56506153 - Lake St Streetscape Lighting Details.dwg Feb 20, 2008 - 4:31pm



TREE REPLACEMENT				
CODE	COMMON NAME	SCIENTIFIC NAME	SIZE	QUANTITY
A	COLUMNAR NORWAY MAPLE	ACER PLATANOIDES COLUMNARE	3" CALIPER	5
B	GREENSPIRE LINDEN	ACER SACCHARUM	3" CALIPER	5
C	SHADEMASTER HONEY LOCUST	GYMNOCLADUS DIOUICUS	3" CALIPER	4

NOTE: ALL TREES BALLED AND BURLAPPED

LANDSCAPING NOTES

SODDING:

ALL DISTURBED AREAS INDICATED ON LANDSCAPING PLANS TO BE SODDED, INCLUDING FERTILIZER NUTRIENTS*, AND SUPPLEMENTAL WATERING WHICH IS TO BE USED AFTER THE INITIAL WATERING (AS SPECIFIED AND AS DIRECTED BY THE ENGINEER) AT THE RATE OF 10 GALLONS PER SQUARE YARD SODDING. SODDED SLOPES WHICH ARE 2:1 OR STEEPER SHALL BE STAKED.

FERTILIZER NUTRIENTS* FOR SODDING:

USE A FERTILIZER WITH A 1:1:1 RATIO PER ACRE:
 60 LBS. NITROGEN FERTILIZER NUTRIENT
 60 LBS. PHOSPHORUS FERTILIZER NUTRIENT
 60 LBS. POTASSIUM FERTILIZER NUTRIENT

TOTAL: 180 LBS. PER ACRE

TREE REPLACEMENT:

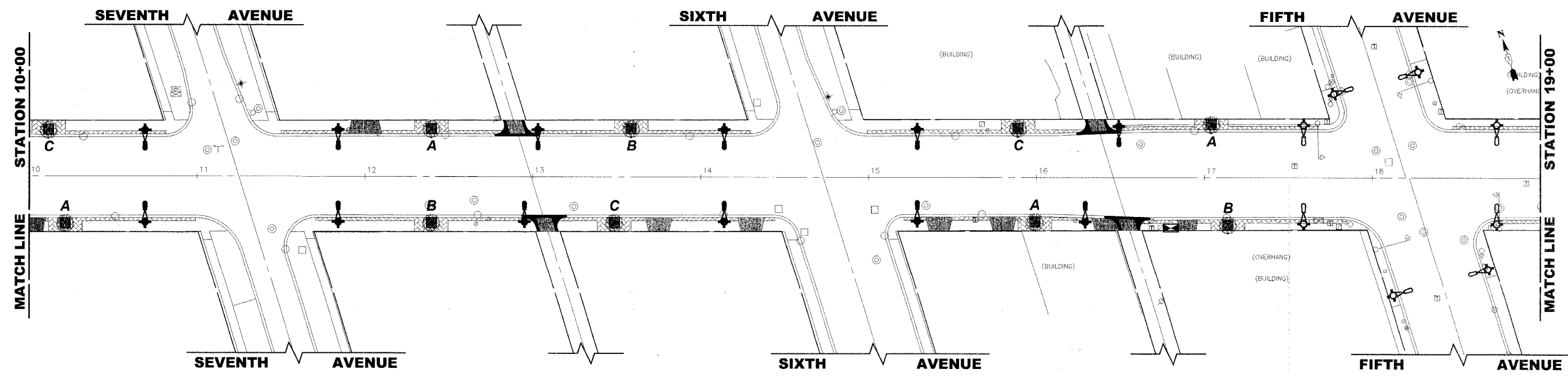
TREE TYPE & LOCATION TO BE DETERMINED IN THE FIELD BY THE VILLAGE LICENSED FORESTER

4" TOP SOIL LAYER:

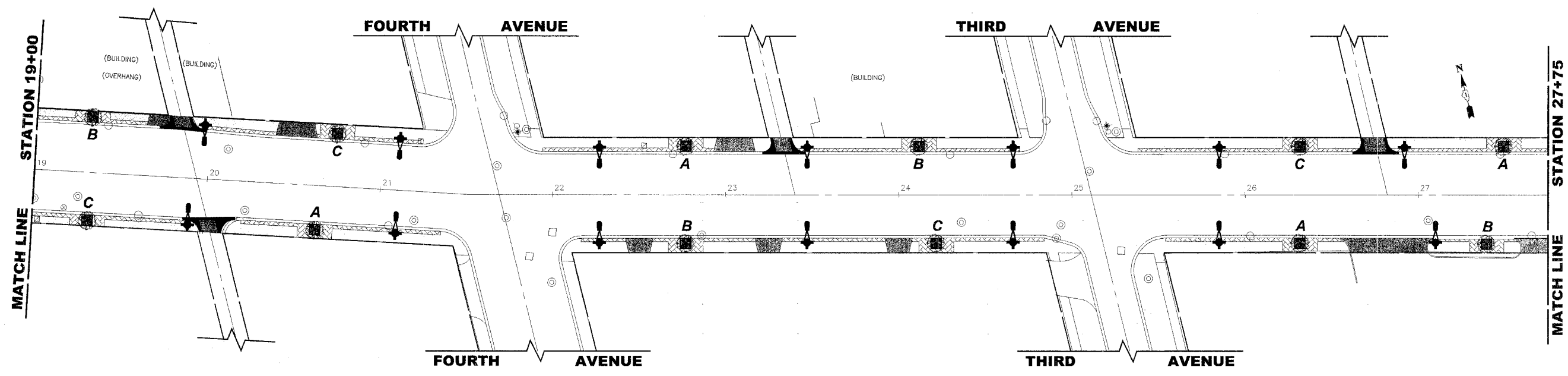
SOIL SHALL BE SPREAD AS DIRECTED BY ENGINEER.

LEGEND OF SYMBOLS

SYMBOL	DESCRIPTION
	PROPOSED CONCRETE AREA
	PROPOSED BRICK PAVING SIDEWALK AREA
	PROPOSED DRIVEWAY AREA
	PROPOSED STREET LIGHT
	PROPOSED TREE WITH CAST IRON GRATE



Drawing file: W:\Projects\56505153 - Lake St. Streetscape\Landscaping_Lake.dwg Feb 20, 2008 - 4:32pm



TREE REPLACEMENT				
CODE	COMMON NAME	SCIENTIFIC NAME	SIZE	QUANTITY
A	COLUMNAR NORWAY MAPLE	ACER PLATANOIDES COLUMNARE	3" CALIPER	4
B	GREENSPIRE LINDEN	ACER SACCHARUM	3" CALIPER	4
C	SHADEMASTER HONEY LOCUST	GYMNOCLADUS DIOUICUS	3" CALIPER	4

NOTE: ALL TREES BALLED AND BURLAPPED

LANDSCAPING NOTES

SODDING:
 ALL DISTURBED AREAS INDICATED ON LANDSCAPING PLANS TO BE SODDED, INCLUDING FERTILIZER NUTRIENTS*, AND SUPPLEMENTAL WATERING WHICH IS TO BE USED AFTER THE INITIAL WATERING (AS SPECIFIED AND AS DIRECTED BY THE ENGINEER) AT THE RATE OF 10 GALLONS PER SQUARE YARD SODDING. SODDED SLOPES WHICH ARE 2:1 OR STEEPER SHALL BE STAKED.

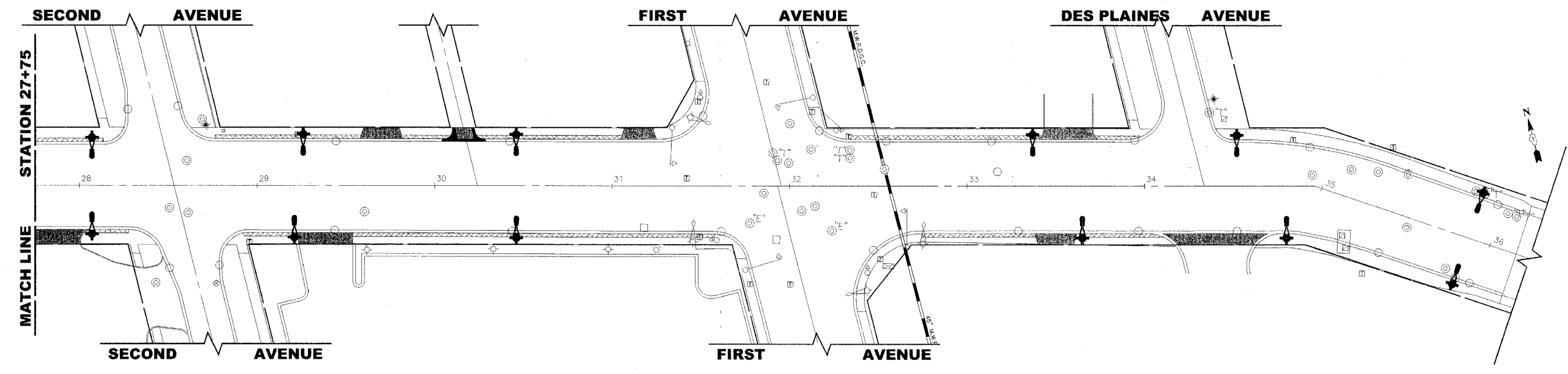
FERTILIZER NUTRIENTS* FOR SODDING:
 USE A FERTILIZER WITH A 1:1:1 RATIO PER ACRE:
 60 LBS. NITROGEN FERTILIZER NUTRIENT
 60 LBS. PHOSPHORUS FERTILIZER NUTRIENT
 60 LBS. POTASSIUM FERTILIZER NUTRIENT
 TOTAL: 180 LBS. PER ACRE

TREE REPLACEMENT:
 TREE TYPE & LOCATION TO BE DETERMINED IN THE FIELD BY THE VILLAGE LICENSED FORESTER

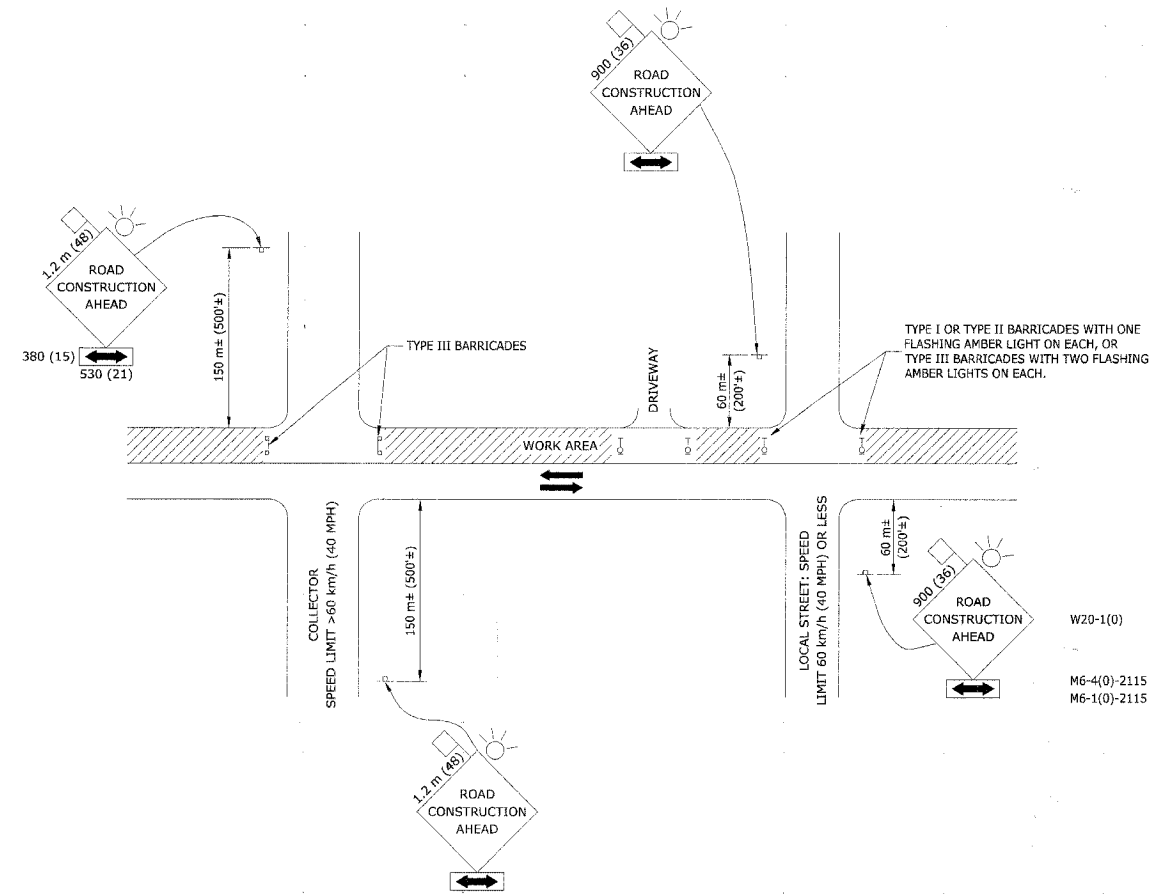
4" TOP SOIL LAYER:
 SOIL SHALL BE SPREAD AS DIRECTED BY ENGINEER.

LEGEND OF SYMBOLS

SYMBOL	DESCRIPTION
[Hatched Box]	PROPOSED CONCRETE AREA
[Cross-hatched Box]	PROPOSED BRICK PAVING SIDEWALK AREA
[Dotted Box]	PROPOSED DRIVEWAY AREA
[Light Bulb Symbol]	PROPOSED STREET LIGHT
[Tree Symbol]	PROPOSED TREE WITH CAST IRON GRATE



Drawing file: W:\Projects\065005153 - Lake St Streetscape\Landscaping_Lake.dwg Feb 20, 2008 - 4:33pm



TRAFFIC CONTROL AND PROTECTION FOR SIDE ROADS, INTERSECTIONS, AND DRIVEWAYS

NOTES:

A. FOR NO LANE RESTRICTION ON THE SIDE ROAD OR DRIVEWAYS

1. SIDE ROAD WITH A SPEED LIMIT OF 60 km/h (40 MPH) OR LESS AS SHOWN ON THE DRAWING AND AS DIRECTED BY THE ENGINEER:

A) ONE "ROAD CONSTRUCTION AHEAD" SIGN 900 X 900 (36 X 36) WITH A FLASHER AND FLAG MOUNTED ON IT APPROXIMATELY 60 m (200') IN ADVANCE OF THE MAIN ROUTE.

B) THE CLOSED PORTION OF THE MAIN ROUTE SHALL BE PROTECTED BY BLOCKING WITH TYPE I, TYPE II, OR TYPE III BARRICADES, 1/3 OF THE CROSS SECTION OF THE CLOSED PORTION.

2. SIDE ROAD WITH A SPEED LIMIT GREATER THAN 60 km/h (40 MPH) AS SHOWN ON THE DRAWING AND AS DIRECTED BY THE ENGINEER:

A) ONE "ROAD CONSTRUCTION AHEAD" SIGN 1.2m X 1.2m (48" BY 48") WITH A FLASHER AND FLAG MOUNTED ON IT APPROXIMATELY 150m (500 FT.) IN ADVANCE OF THE MAIN ROUTE.

B) THE CLOSED PORTION OF THE MAIN ROUTE SHALL BE PROTECTED BY BLOCKING WITH TYPE II BARRICADES, 1/2 OF THE CROSS SECTION OF THE CLOSED PORTION.

3. WHEN THE SIDE ROAD LIES BETWEEN THE BEGINNING OF THE MAINLINE SIGNING AND THE WORK ZONE, A SINGLE HEADED ARROW (M6-1) SHALL BE USED IN LIEU OF THE DOUBLE HEADED ARROW (M6-4).

B. FOR LANE CLOSURE ON A SIDE ROAD OR DRIVEWAY:

USE APPLICABLE PORTIONS OF THE TYPICAL APPLICATION OF TRAFFIC CONTROL DEVICES (STD. 701501, STD. 701606, OR THE APPROPRIATE STANDARD). THE SPACING OF SIGNS AND BARRICADES SHALL BE ADJUSTED FOR FIELD CONDITIONS AS DIRECTED BY THE ENGINEER. THE DIRECTIONAL ARROW SHALL BE COVERED OR REMOVED WHEN NO LONGER CONSISTENT WITH THE SIDE ROAD LANE CLOSURE.

C. ADVANCE WARNING SIGNS ARE TO BE OMITTED ON DRIVEWAY UNLESS OTHERWISE NOTED.

D. THE TRAFFIC CONTROL AND PROTECTION FOR SIDE ROADS, INTERSECTIONS, AND DRIVEWAYS SHALL BE INCLUDED IN THE COST OF SPECIFIC TRAFFIC CONTROL STANDARDS OR ITEMS.

ALL DIMENSIONS ARE IN MILLIMETERS (INCHES) UNLESS OTHERWISE SHOWN.

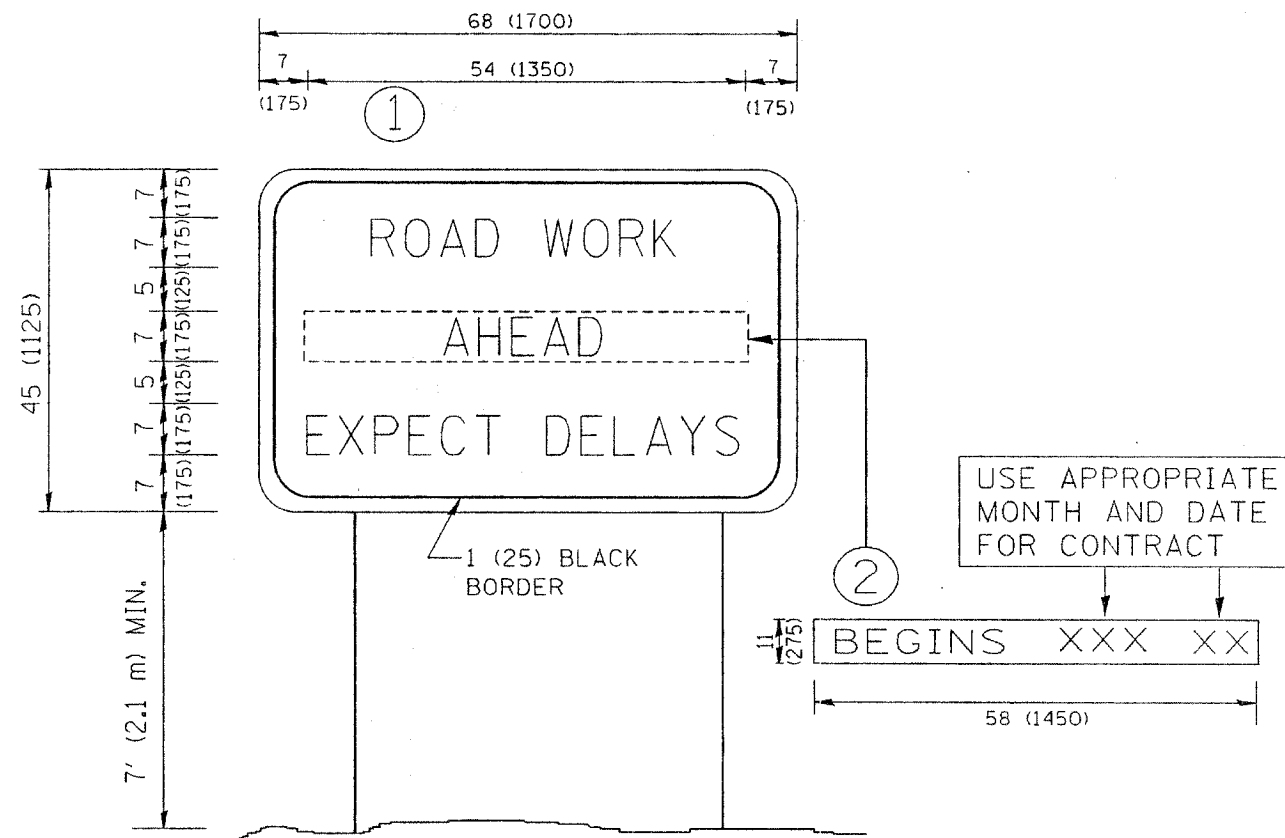


9933 Roosevelt Road
Westchester, Illinois 60154-2780
Phone: 708/865-0300
Fax: 708/865-1212

REVISIONS	
NAME	DATE
LHA	06/89
T. RAMMACHER	09/08/94
J. OBERLE	10/18/95
A. HOUSER	03/06/96
A. HOUSER	10/15/96
T. RAMMACHER	01/06/00

ILLINOIS DEPARTMENT OF TRANSPORTATION
**TRAFFIC CONTROL AND PROTECTION FOR
SIDE ROADS, INTERSECTIONS, AND
DRIVEWAYS**


SCALE: NONE
DATE: 03/25/02
DRAWN BY: CADD
CHECKED BY:



NOTES:

1. USE BLACK LETTERING ON ORANGE BACKGROUND.
2. ERECT SIGNS IN ADVANCE OF THE LOCATION FOR THE "ROAD CONSTRUCTION AHEAD" SIGN AT LOCATIONS AS DIRECTED BY THE ENGINEER.
3. ERECT SIGN ① WITH INSTALLED PANEL ② ONE WEEK PRIOR TO THE START OF CONSTRUCTION.
4. REMOVE PANEL ② SOON AFTER THE START OF CONSTRUCTION.
5. SEE SPECIAL PROVISION FOR "TEMPORARY INFORMATION SIGNING" FOR ADDITIONAL INFORMATION.
6. ONE SIGN ASSEMBLY EQUALS 25.70 SQ. FT. (2.3 SQ. M.)
7. SHALL BE PAID FOR AS TEMPORARY INFORMATION SIGNING.

ALL DIMENSIONS IN INCHES (MILLIMETERS)
UNLESS OTHERWISE SHOWN.

 HANCOCK ENGINEERING ♦ Civil Engineers ♦ Municipal Consultants ♦ Established 1911 <small>9933 Roosevelt Road Westchester, Illinois 60154-2780 Phone: 708/865-8300 Fax: 708/865-1212</small>	REVISIONS	ILLINOIS DEPARTMENT OF TRANSPORTATION ARTERIAL ROAD INFORMATION SIGN																	
	<table border="1"> <thead> <tr> <th>NAME</th> <th>DATE</th> </tr> </thead> <tbody> <tr> <td>R. MIRS</td> <td>9/15/97</td> </tr> <tr> <td>R. MIRS</td> <td>12/11/97</td> </tr> <tr> <td>T. RAMMACHER</td> <td>2/2/99</td> </tr> <tr> <td>C. JUCIUS</td> <td>1/31/07</td> </tr> </tbody> </table>		NAME	DATE	R. MIRS	9/15/97	R. MIRS	12/11/97	T. RAMMACHER	2/2/99	C. JUCIUS	1/31/07	<table border="1"> <tr> <td>SCALE:</td> <td>NONE</td> <td>DRAWN BY:</td> <td>DESIGN</td> </tr> <tr> <td>DATE:</td> <td></td> <td>CHECKED BY:</td> <td></td> </tr> </table>	SCALE:	NONE	DRAWN BY:	DESIGN	DATE:	
NAME	DATE																		
R. MIRS	9/15/97																		
R. MIRS	12/11/97																		
T. RAMMACHER	2/2/99																		
C. JUCIUS	1/31/07																		
SCALE:	NONE	DRAWN BY:	DESIGN																
DATE:		CHECKED BY:																	