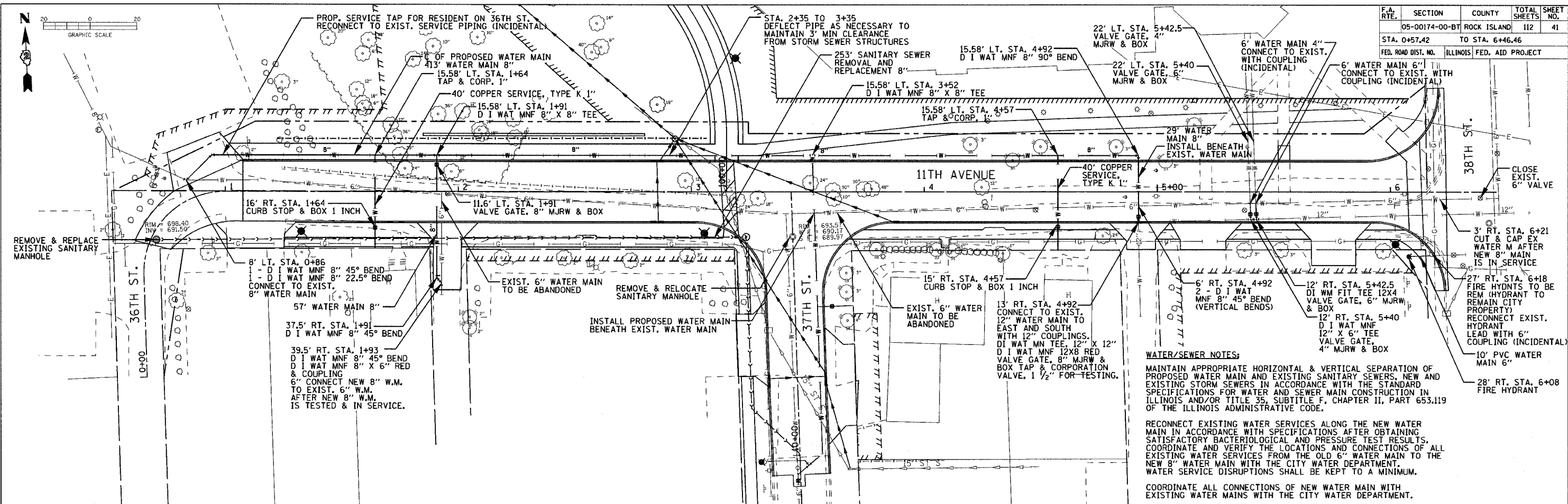


F.A. RTE.	SECTION	COUNTY	TOTAL SHEETS	SHEET NO.
05-00174-00-BT	ROCK ISLAND	112	41	
STA. 0+57.42	TO STA. 6+46.46			
FED. ROAD DIST. NO.	ILLINOIS	FED. AID PROJECT		

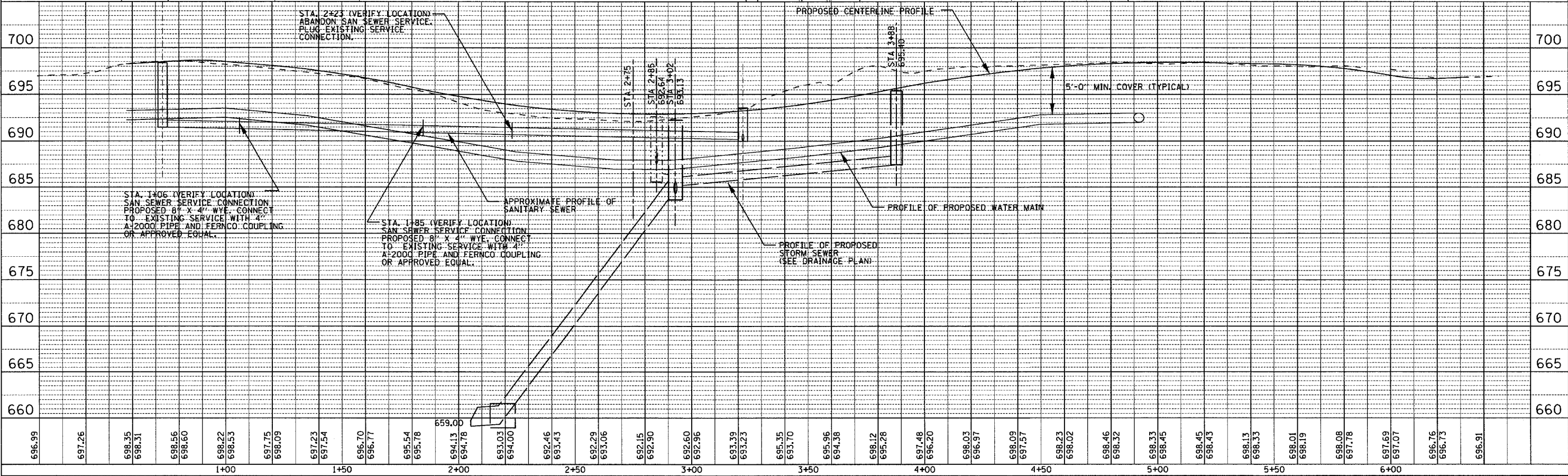


**WATER/SEWER NOTES:**

MAINTAIN APPROPRIATE HORIZONTAL & VERTICAL SEPARATION OF PROPOSED WATER MAIN AND EXISTING SANITARY SEWERS, NEW AND EXISTING STORM SEWERS IN ACCORDANCE WITH THE STANDARD SPECIFICATIONS FOR WATER AND SEWER MAIN CONSTRUCTION IN ILLINOIS AND/OR TITLE 35, SUBTITLE F, CHAPTER II, PART 653.119 OF THE ILLINOIS ADMINISTRATIVE CODE.

RECONNECT EXISTING WATER SERVICES ALONG THE NEW WATER MAIN IN ACCORDANCE WITH SPECIFICATIONS AFTER OBTAINING SATISFACTORY BACTERIOLOGICAL AND PRESSURE TEST RESULTS. COORDINATE AND VERIFY THE LOCATIONS AND CONNECTIONS OF ALL EXISTING WATER SERVICES FROM THE OLD 6" WATER MAIN TO THE NEW 8" WATER MAIN WITH THE CITY WATER DEPARTMENT. WATER SERVICE DISRUPTIONS SHALL BE KEPT TO A MINIMUM.

COORDINATE ALL CONNECTIONS OF NEW WATER MAIN WITH EXISTING WATER MAINS WITH THE CITY WATER DEPARTMENT.



**11TH AVENUE UTILITY PLANS STA 0+57.42 TO 6+46.46**

DATE	BY	REVIEWED	CHECKED

DATE	BY	REVIEWED	CHECKED

PLOT DATE = #DATE#  
 FILE NAME = #FILE#  
 PLOT SCALE = #SCALE#  
 USER NAME = #USER#