

STATE OF ILLINOIS DEPARTMENT OF TRANSPORTATION PLANS FOR PROPOSED LOCAL AGENCY IMPROVEMENT FEDERAL-AID PROJECT

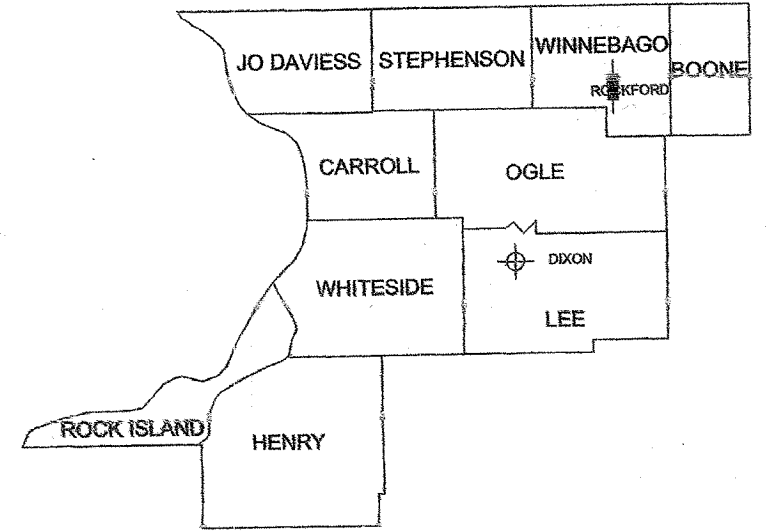


INDEX OF SHEETS

SHEET NO. SHEET NAME

- 1. COVER SHEET
- 2. GENERAL NOTES
- 3. SUMMARY OF QUANTITIES
- 4. SCHEDULE OF QUANTITIES
- 5-6. TYPICAL SECTIONS
- 7-14. STAGING PLAN
- 15-24. PLAN & PROFILE (HARRISON AVE)
- 25-26. PLAN & PROFILE (PERRYVILLE RD)
- 27-28. EROSION CONTROL / SEEDING PLAN
- 29. TEMPORARY TRAFFIC SIGNAL PLAN
- 30-32. TRAFFIC SIGNAL PLAN
- 33-35. STRIPING PLAN
- 36-41. CROSS SECTION - (HARRISON AVE)
- 42-43. CROSS SECTION - (PERRYVILLE RD)

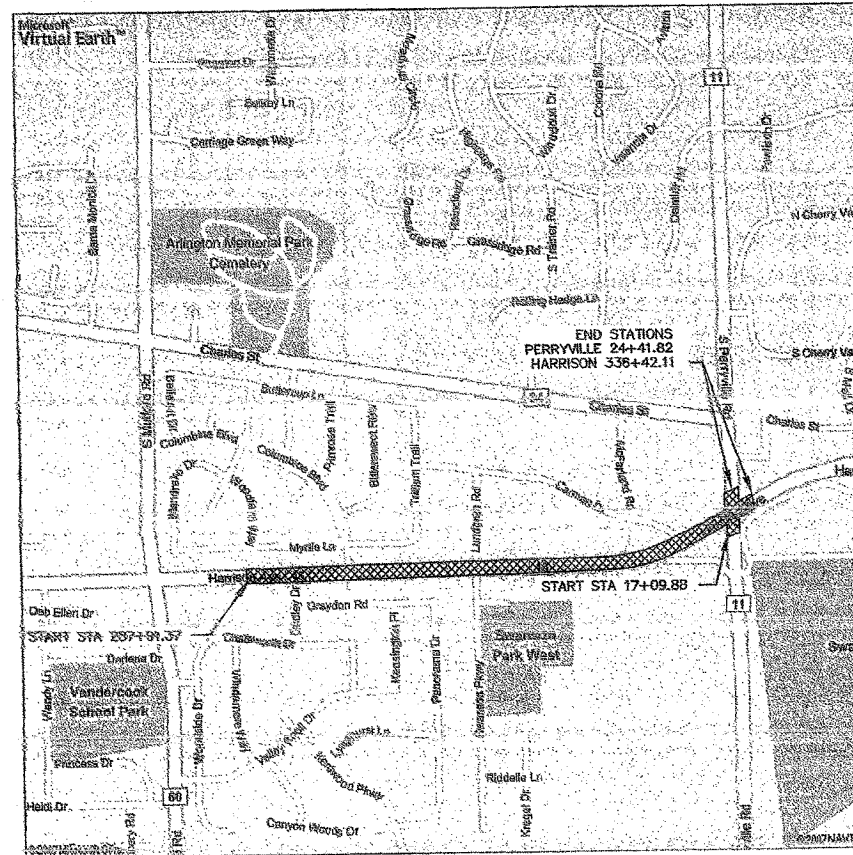
FAP 525 (HARRISON AVE.)
SECTION 04-00355-00-RS
PROJECT NO. RS-0525(114)
JOB NO. C-92-066-07
CONTRACT NO. 85437



DISTRICT HEADQUARTER
 PROJECT LOCATION

STANDARDS

- 280001-04 TEMPORARY EROSION CONTROL SYSTEMS
- 353001-04 PCC BASE CSE WITH HMA BINDER & SURFACE CSE
- 486201-01 MAILBOX TURNOUT
- 420001-07 PAVEMENT JOINTS
- 442101-07 CLASS B PATCHES
- 482006-03 HMA SHOULDER ADJACENT TO RIGID PAVEMENT
- 542301-01 PRECAST REINFORCED CONCRETE FLARED END SECTION
- 542401 METAL END SECTION FOR PIPE CULVERTS
- 602401-01 MANHOLE - TYPE A
- 602601-01 PRECAST REINFORCED CONCRETE FLAT SLAB TOP
- 604001-02 FRAME & LIDS TYPE 1
- 604026-01 FRAME & GRATE TYPE 6
- 606001-03 CONCRETE CURB TYPE B AND COMBINATION CONCRETE CURB & GUTTER
- 606006-01 OUTLETS FOR CONCRETE CURB & GUTTER TYPE B-6.24
- 606301-03 PC CONCRETE ISLANDS AND MEDIANS
- 635001 DELINEATORS
- 635006-02 REFLECTOR AND TERMINAL MARKER PLACEMENT
- 635011-01 REFLECTOR MARKER AND MOUNTING DETAILS
- 637006-01 CONCRETE BARRIER, DOUBLE FACE
- 701001-01 OFF-RD OPERATIONS 2L, 2W, MORE THAN 15' AWAY
- 701006-02 OFF-RD OPERATIONS 2L, 2W, 4.5M (15') TO PAVEMENT EDGE FOR SPEEDS ≥ 45 MPH
- 701011-01 OFF-RD MOVING OPERATIONS 2L, 2W DAY ONLY FOR SPEEDS ≥ 45 MPH
- 701101 -C OFF-RD OPERATIONS 2L, 2W, 15' TO 24' FROM PAVEMENT EDGE
- 701201-02 LANE CLOSURE, 2L, 2W, DAY ONLY FOR SPEEDS ≥ 45 MPH
- 701306-01 LANE CLOSURE, 2L, 2W, SLOW MOVING OPERATIONS DAY ONLY, FOR SPEEDS ≥ 45 MPH
- 701311-02 LANE CLOSURE, 2L, 2W, MOVING OPERATIONS - DAY ONLY
- 701320-02 LANE CLOSURE, 2L, 2W, PAVEMENT WIDENING FOR SPEEDS ≥ 45 MPH
- 701426-02 LANE CLOSURE, MULTILANE, INTERMITTENT OR MOVING OPER., FOR SPEEDS ≥ 45 MPH
- 701501-04 URBAN LANE CLOSURE 2L, 2W UNDIVIDED
- 701601-05 URBAN LANE CLOSURE, MULTILANE 1W OR 2W WITH NONTRAVERSABLE MEDIAN
- 701602-03 URBAN LANE CLOSURE, MULTILANE 2W WITH BI-DIRECTIONAL LEFT TURN LANE
- 701606-05 URBAN LANE CLOSURE, MULTILANE 2W WITH MOUNTABLE MEDIAN
- 701701-05 URBAN LANE CLOSURE, MULTILANE INTERSECTION
- 791901 TRAFFIC CONTROL DEVICES
- 720011 METAL POSTS FOR SIGNS, MARKERS & DELINEATORS
- 720016-01 MAST ARM MOUNTED STREET NAME SIGN
- 728001 TELESCOPING STEEL SIGN SUPPORT
- 729001 APPLICATIONS OF TYPE A & B METAL POSTS
- 780001-01 TYPICAL PAVEMENT MARKINGS
- 781801-02 TYPICAL APPLICATIONS RAISED REFLECTIVE PAVEMENT MARKERS
- 814001-01 CONCRETE HANDHOLES
- 857001 STANDARD PHASE DESIGNATION DIAGRAMS AND PHASE SEQUENCES
- 862001 UNINTERRUPTIBLE POWER SUPPLY (UPS)
- 873001-01 TRAFFIC SIGNAL GROUNDING AND BONDING
- 877011-03 STEEL COMBINATION MAST ARM ASSEMBLY & POLE 16' - 65'
- 878001-03 CONCRETE FOUNDATION DETAILS
- 880006 TRAFFIC SIGNAL MOUNTING DETAILS
- B.L.R. 10-5 PCC PAVEMENT SPECIAL (NONREINFORCED)
- B.L.R. 14-9 PORTLAND CEMENT CONCRETE PAVEMENT
- B.L.R. 24-1 MAILBOX TURNOUT FOR LOCAL ROADS



PROJECT LOCATION

SCALES:	
CROSS-SECTIONS FULL SIZE HORIZONTAL: 1" = 10' VERTICAL: 1" = 5' 1/4 SIZE HORIZONTAL: 1" = 20' VERTICAL: 1" = 10'	PLAN & PROFILE FULL SIZE HORIZONTAL: 1" = 20' VERTICAL: 1" = 5' 1/4 SIZE HORIZONTAL: 1" = 40' VERTICAL: 1" = 10'

HARRISON AVE:
NET LENGTH: 4850.7 FT (0.92 MILES)
ADT: 21,500 (2007) TRUCK: 2%
URBAN ARTERIAL
45 MPH DESIGN SPEED

PERRYVILLE ROAD:
NET LENGTH: 731.9 FT (0.14 MILES)
ADT: 21,700 (2007) TRUCK: 2%
URBAN ARTERIAL
45 MPH DESIGN SPEED

CALL J.U.L.I.E.
BEFORE YOU DIG
1-800-892-0123
T.44 N. - R.2 E.
SEC. 34



STATE OF ILLINOIS DEPARTMENT OF TRANSPORTATION DIVISION OF HIGHWAYS	
APPROVED <i>MARBH</i> 21 20 08	
<i>[Signature]</i> WINNEBAGO COUNTY ENGINEER	
PASSED <i>[Signature]</i> APR 23 20 08	
DISTRICT 2 ENGINEER OF LOCAL ROADS & STREETS	
RELEASING FOR BID BASED ON LIMITED REVIEW <i>[Signature]</i> APR 23 20 08	
DEPUTY DIRECTOR OF HIGHWAYS, REGION 2 ENGINEER	