

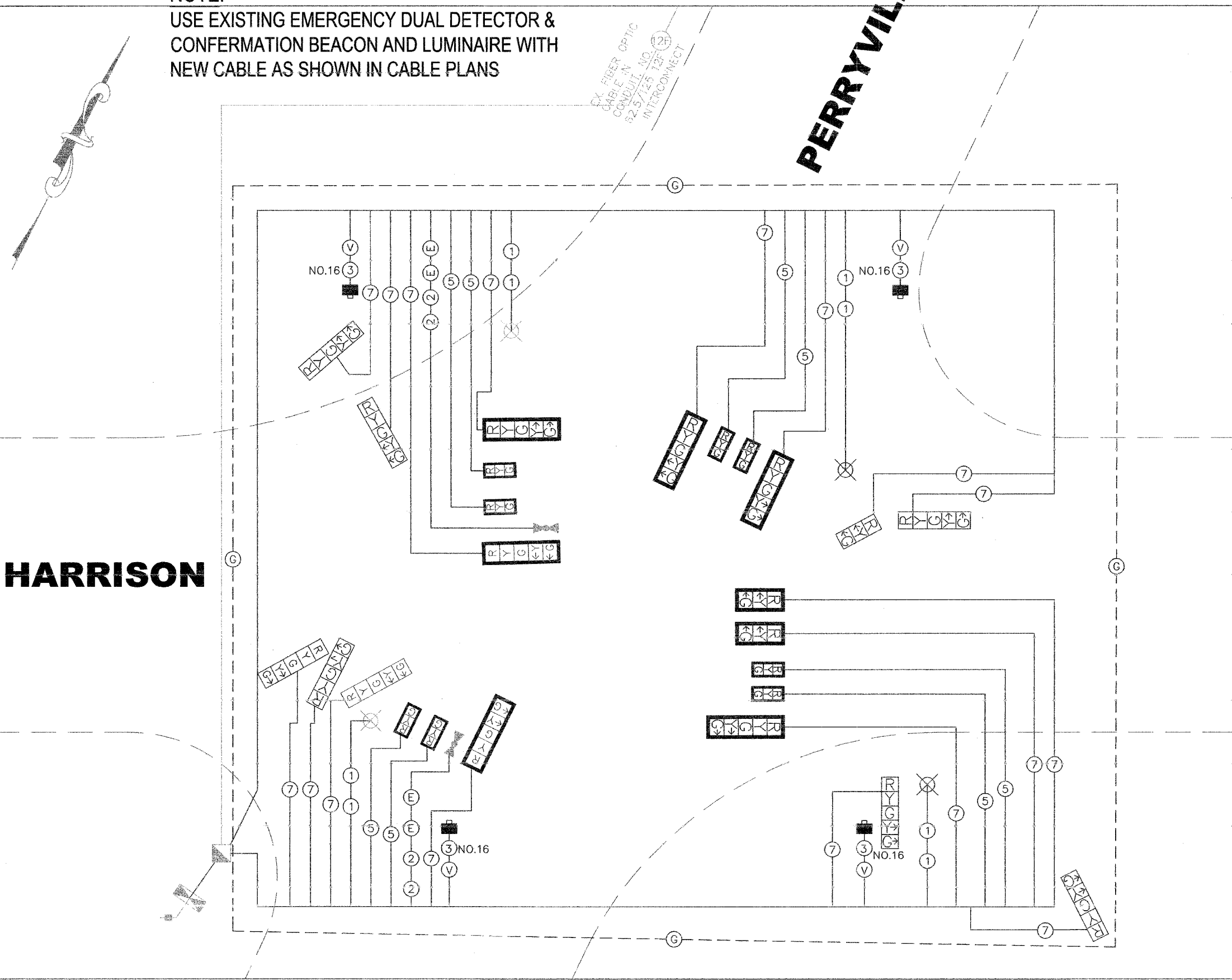


NOTE:
USE EXISTING EMERGENCY DUAL DETECTOR & CONFIRMATION BEACON AND LUMINAIRE WITH NEW CABLE AS SHOWN IN CABLE PLANS

PERRYVILLE

HARRISON

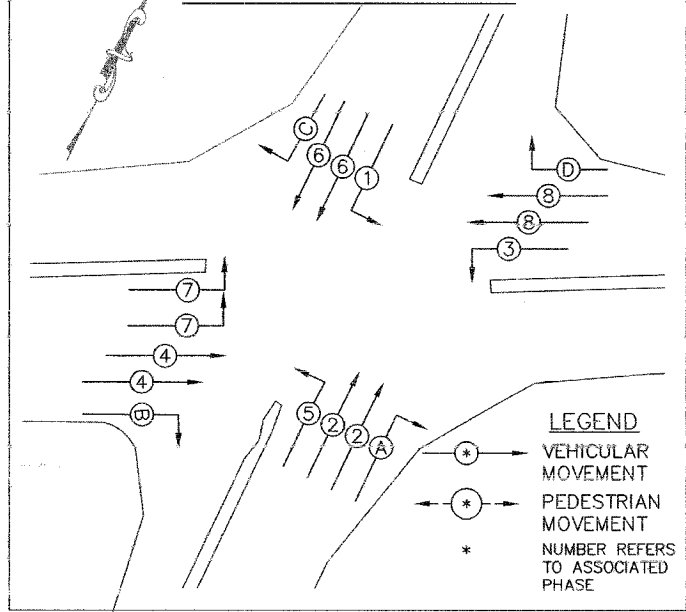
EX. FIBER OPTIC CABLE IN CONDUIT, NO. 62.5/125 12F INTERCONNECT



CABLE PLAN LEGEND

- | PROPOSED | EXISTING | |
|----------|----------|---|
| | | SERVICE INSTALLATION |
| | | VIDEO DETECTOR CAMERA |
| | | VIDEO DETECTOR CABLE
BELDON 8281 COAXIAL |
| | | CONTROLLER CABINET |
| | | CABLE WITH NO. OF CONDUCTORS |
| | | SIGNAL HEAD WITH BACK PLATE (12" LENSES) |
| | | SIGNAL HEAD WITHOUT BACK PLATE (12" LENSES) |
| | | HIGH PRESSURE SODIUM LUMINAIRE (400 WATTS) |
| | | EMERGENCY VEHICLE PRIORITY SYSTEM LEAD-IN CABLE (3/C NO. 20) |
| | | EMERGENCY VEHICLE DOUBLE OPTICAL DETECTOR WITH DOUBLE CONFIRMATION BEACON |
| | | FIBER OPTIC CABLE IN CONDUIT, NO. 62.5/125, 12F |
| | | GROUNDING CIRCUIT AS PER STD 873001. (1/C NO. 6) |

PHASE DESIGNATION DIAGRAM



P:\User\eng\p\Users\Harrison\Area\10-25(ANDY) s\T-traffic signal.dwg, 4/9/2008 9:50:50 AM, 1:1