

STATE OF ILLINOIS  
 PLANS FOR PROPOSED  
 LOCAL AGENCY IMPROVEMENTS  
 FEDERAL-AID URBAN PROJECT  
 CITY OF ROCK FALLS  
 SECTION 01-00125-00-BR.  
 DIXON AVENUE  
 F.A.U. ROUTE 5560  
 PROJECT BHM-5062(25)  
 JOB NO. C-92-070-07  
 CONTRACT NO. 85438  
 2008

INDEX OF SHEETS

1	COVER SHEET AND INDEX OF SHEETS
2	SUMMARY OF QUANTITIES
3	TYPICAL SECTIONS & DETAILS
4	SCHEDULES OF QUANTITIES AND GENERAL NOTES
5	PLAN AND PROFILE
6-11	STRUCTURAL PLAN DETAILS
12-14	CROSS SECTIONS

STANDARDS

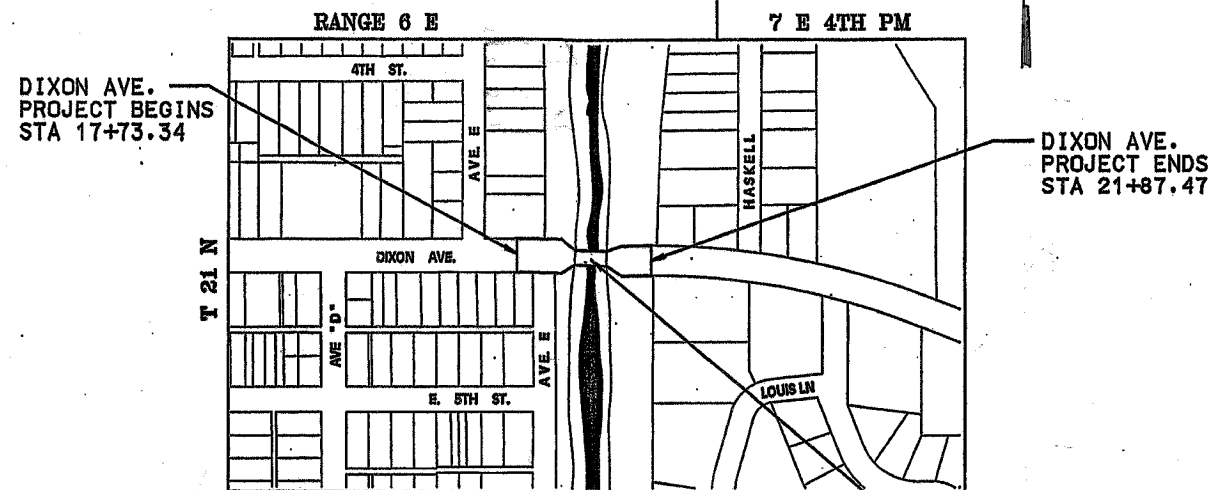
424001-05	CURB RAMPS FOR SIDEWALKS
606001-03	CONCRETE CURB TYPE B AND COMBINATION CONCRETE CURB AND GUTTER
701901	TRAFFIC CONTROL DEVICES
720011	METAL POSTS FOR SIGNS, MARKERS, & DELINEATORS
728001	TELESCOPING STEEL SIGN SUPPORT
729001	APPLICATIONS OF TYPES A & B METAL (FOR SIGNS & MARKERS)
780001-01	TYPICAL PAVEMENT MARKINGS
BLR 21-7	TYPICAL APPLICATIONS OF TRAFFIC CONTROL DEVICES FOR CONSTRUCTION ON RURAL LOCAL HIGHWAYS
BLR 22-5	TYPICAL APPLICATIONS OF TRAFFIC CONTROL DEVICES FOR CONSTRUCTION ON RURAL LOCAL HIGHWAYS

DESIGN CRITERIA

DESIGN SPEED: 40 MPH - DIXON AVE.

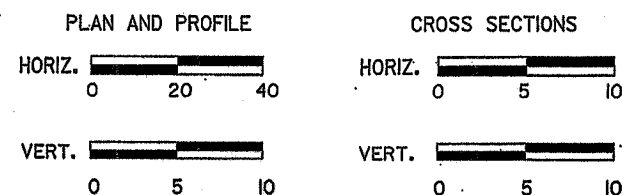
FUNCTIONAL CLASSIFICATION	HIGHWAY	ADT (2028)	% TRUCKS
URBAN COLLECTOR ST.	DIXON AVE.	9,850	9

LOCATION MAP



NET LENGTH = 414.13 FEET = 0.08 MILES

SCALES:



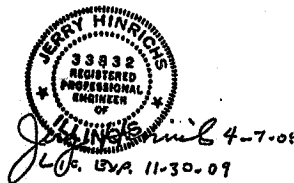
NAME AND ADDRESS OF UTILITIES	TYPE
COMCAST ATTN: MIKE OWENS 4450 KISHWAUKEE ST. ROCKFORD, IL 61109 (815) 509-7876	CALBE TV
NICOR GAS ATTN: CONNIE LANE 1844 FERRY ROAD NAPERVILLE IL, 60563 (630) 388-2362	GAS
ROCK FALLS ELECTRIC 1109 INDUSTRIAL PARK ROAD ROCK FALLS, IL 61071 (815) 622-1145	ELECTRIC
SBC / AT&T ATTN: WILLIAM CONOVER 2315 N. KNOXVILLE AVE. FLOOR #2 PEORIA IL, 61604 (309) 686-3317	TELEPHONE
ROCK FALLS DEPARTMENT OF PUBLIC WORKS 603 W. 10TH ST. ROCK FALLS, IL 61071 (815) 622-1106	SEWER/WATER
NORLIGHT ATTN: DALE MAYER 13935 BISHOPS DRIVE BROOKFIELD WI, 53045 (414) 588-0647	
ADESTA LLC ATTN: LOU URDIL 1428 SHERMAN ROAD ROMEDEVILLE IL, 60446 (630) 739-0546	

CITY OF ROCK FALLS

APPROVED: 4-3-08 DATE  
*[Signature]*  
LOCAL AGENCY OFFICIAL

PASSED: April 15, 2008 DATE  
*[Signature]*  
DIRECTOR & ENGINEER OF LOCAL ROADS & STREETS

RELEASING FOR BID BASED ON LIMITED REVIEW  
April 15, 2008 DATE  
*[Signature]*  
DEPUTY DIRECTOR OF ARCHITECT, ENGINEER & SURVEYOR



Revised 6-2-08

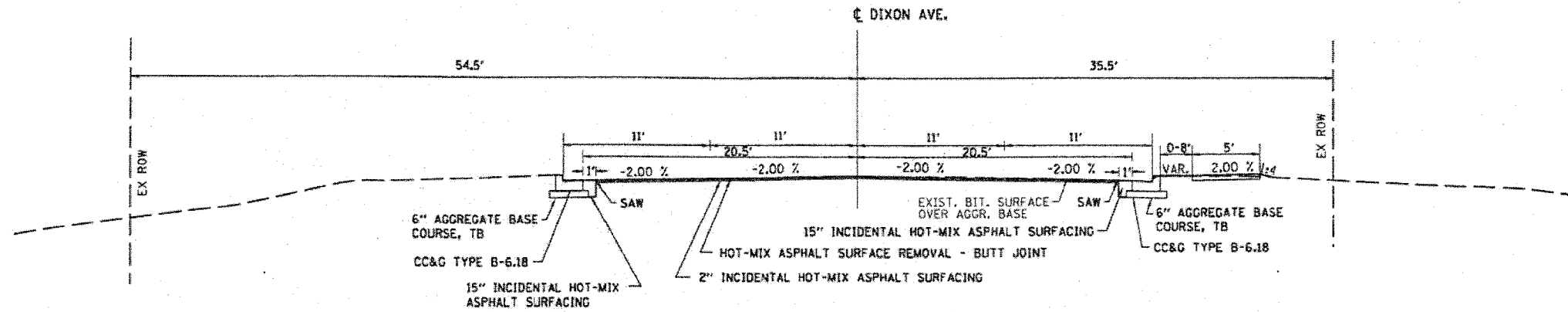
S:\STRUCT\1093D07C\CityofRockFalls\COVERETC.DGN

FILE NAME =	USER NAME = #USER#	DESIGNED -	REVISED -	<b>WILLETT, HOFMANN &amp; ASSOCIATES, INC</b> CONSULTING ENGINEERS DIXON, IL	<b>DIXON AVENUE</b>	F.A. RTE.	SECTION	COUNTY	TOTAL SHEETS	SHEET NO.	
#FILE#		DRAWN -	REVISED -			5560	01-00125-00-BR	WHITESIDE	1	1	
		CHECKED -	REVISED -			CITY OF ROCK FALLS		CONTRACT NO. 85438			
		DATE -	REVISED -			FED. ROAD DIST. NO. 2 ILLINOIS FED. AID PROJECT					



# TYPICAL SECTIONS & DETAILS

## DIXON AVENUE

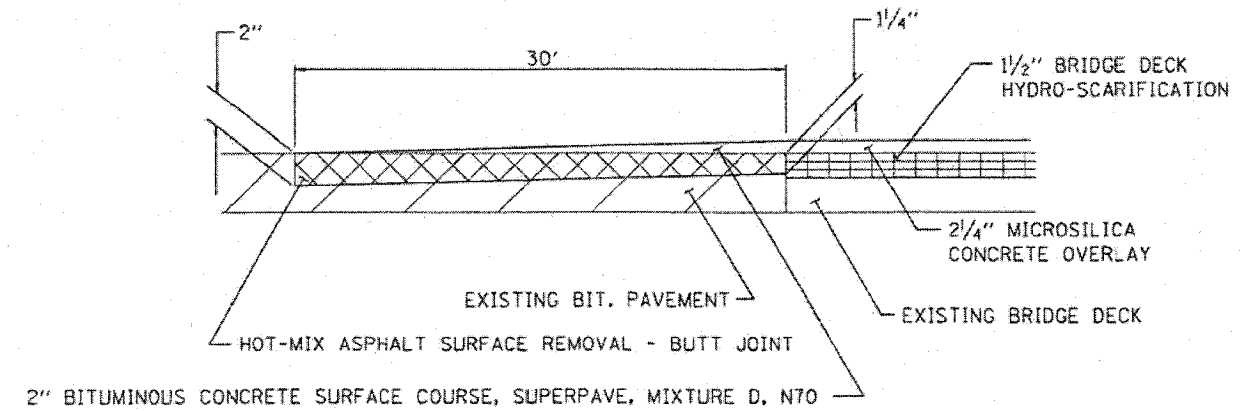


STA. 19+22.42 TO STA. 19+52.42  
 STA. 20+47.58 TO STA. 20+77.58

### INCIDENTAL HOT-MIX ASPHALT SURFACING

	PAVEMENT
PG:	PG 64-22
DESIGN AIR VOIDS	4.0 @ N50
MIXTURE COMPOSITION (GRADATION MIXTURE)	IL 9.5 or 12.5
FRICTION AGGREGATE	D

DIXON - BOYD STREET - HORIZONTAL CONTROL POINTS					
POINT #	STATION	O/S	NORTH	EAST	DESCRIPTION
100	17+50.35	24.47	1862642.45	2429326.68	PIN
101	22+18.03	25.4	1862645.8	2429794.35	PIN



BUTT JOINT TYPICAL  
 STA. 19+22.42 TO 19+52.42  
 STA. 20+47.58 TO 20+77.58

Revised 6-2-08

DATE	
BY	
PLAN	
DATE	
BY	
DATE	
BY	
DATE	
BY	
DATE	

DATE	
BY	
DATE	
BY	
DATE	
BY	
DATE	
BY	
DATE	
BY	
DATE	

S:\Structure\10933070\CityofRockFalls\typicals.dgn

FILE NAME	USER NAME	DESIGNED	REVISOR	<b>WILLETT, HOFMANN &amp; ASSOCIATES, INC.</b> CONSULTING ENGINEERS DIXON, IL	<b>TYPICAL SECTIONS &amp; DETAILS</b>	F.A. RT#	SECTION	COUNTY	TOTAL SHEETS	SHEET NO.	
FILE#		DRAWN	REVISOR			5560	01-00125-00-BR	WHITESIDE	14	3	
		CHECKED	REVISOR					CITY OF ROCK FALLS			CONTRACT NO. 05438
		DATE	REVISOR					FED. ROAD DIST. NO. 7 ILLINOIS FED. AID PROJECT			
						SCALE:	SHEET NO.	OF	SHEETS	STA. TO STA.	

# SCHEDULES & GENERAL NOTES

LOCATION	EARTH EXCAVATION (SPECIAL) CU YD	EARTH EXCAVATION ADJUSTED FOR SHRINKAGE 25% CU YD	EMBANKMENT CU YD	EARTHWORK BALANCE WASTE (+) OR SHORTAGE (-) CU YD
DIXON AVE	71	53	6	47

SEEDING, CLASS 1 (SPECIAL)		
STATION	ACRE	REMARKS
DIXON AVE. 17+73.34 - 21+81.47	0.04	
PROJECT TOTAL	0.04	

AGGREGATE BASE COURSE, TYPE B		
STATION	TON	REMARKS
DIXON AVE. RT 17+73.34 - 17+90.42	3	6"
RT 18+19.26 - 19+22.42	16	6"
LT 19+22.42 - 19+52.42	3	6"
RT 20+47.58 - 20+77.58	3	6"
LT 20+47.58 - 20+77.58	3	6"
PROJECT TOTAL	28	

BITUMINOUS MATERIALS (PRIME COAT)		
STATION	GALLON	REMARKS
DIXON AVE. RT 17+73.34 - 17+90.42	2	.4 GAL/S.Y. OVER AGG
RT 17+73.34 - 17+90.42	1	.1 GAL/S.Y. OVER BIT
RT 18+19.26 - 19+22.42	3	.1 GAL/S.Y. OVER BIT
RT 18+19.26 - 19+22.42	11	.4 GAL/S.Y. OVER AGG
LT 19+22.42 - 19+52.42	1	.4 GAL/S.Y. OVER AGG
19+22.42 - 19+52.42	14	.1 GAL/S.Y. OVER BIT
20+47.58 - 20+77.58	14	.1 GAL/S.Y. OVER BIT
RT 20+47.58 - 20+77.58	1	.4 GAL/S.Y. OVER AGG
LT 20+47.58 - 20+77.58	1	.4 GAL/S.Y. OVER AGG
PROJECT TOTAL	48	

HOT-MIX ASPHALT SURFACE REMOVAL - BUTT JOINT		
STATION	SQ YD	REMARKS
DIXON AVE. 19+22.42 - 19+52.42	130	1 1/4" - 2"
20+47.58 - 20+77.58	130	1 1/4" - 2"
PROJECT TOTAL	260	

INCIDENTAL HOT-MIX ASPHALT SURFACING		
STATION	TON	REMARKS
DIXON AVE. RT 17+73.34 - 17+90.42	6	15"
RT 18+19.26 - 19+22.42	23	15"
RT 19+22.42 - 19+52.42	3	15"
LT 19+22.42 - 19+52.42	3	15"
RT 20+47.58 - 20+77.58	3	15"
LT 20+47.58 - 20+77.58	3	15"
19+22.42 - 19+52.42	16	2"
20+47.58 - 20+77.58	16	2"
PROJECT TOTAL	73	

PORTLAND CEMENT CONCRETE SIDEWALK 5 INCH		
STATION	50 FT	REMARKS
DIXON AVE. RT 17+73.34 - 17+81.67	88	5'
RT 18+22.05 - 19+52.42	653	5'
RT 20+47.58 - 21+81.47	671	5'
PROJECT TOTAL	1,392	

DETECTABLE WARNINGS		
STATION	50 FT	REMARKS
DIXON AVE. 17+86	8	2'x4'
18+24	8	2'x4'
PROJECT TOTAL	16	

COMBINATION CONCRETE CURB & GUTTER, SPECIAL		
STATION	FOOT	REMARKS
DIXON AVE. RT 17+73.34 - 17+90.42	26	
RT 18+19.26 - 19+47.42	137	
LT 19+22.42 - 19+52.42	30	
RT 19+47.42 - 19+52.42	5	6" - 10.2" BACK OF CURB
RT 20+47.58 - 20+52.58	5	6" - 10" BACK OF CURB
RT 20+52.58 - 20+77.58	25	
LT 20+47.58 - 20+77.58	30	
PROJECT TOTAL	258	

SHORT-TERM PAVEMENT MARKING		
STATION	FOOT	REMARKS
DIXON AVE. LT 19+37.42 - 20+67.42	40	WHITE LINE
RT 19+37.42 - 20+67.42	40	WHITE LINE
19+22.42 - 20+77.58	310	DOUBLE YELLOW
PROJECT TOTAL	390	

PAINT PAVEMENT MARKING LINE 4"		
STATION	FOOT	REMARKS
DIXON AVE. LT 19+37.42 - 20+67.42	40	WHITE LINE
RT 19+37.42 - 20+67.42	40	WHITE LINE
19+22.42 - 20+77.58	310	DOUBLE YELLOW
PROJECT TOTAL	390	

## GENERAL NOTES

THE CONTRACTOR SHALL CAREFULLY PRESERVE ALL PROPERTY MARKS, SECTION OR SUBSECTION MONUMENTS ENCOUNTERED, UNTIL AN OWNER OR AUTHORIZED SURVEYOR OR AGENT HAS WITNESSED OR OTHERWISE REFERENCED THEIR LOCATION. ANY PROPERTY MARKS, SECTION OR SUBSECTION MONUMENTS UNLESS REFERENCED, DAMAGED BY THE CONTRACTOR SHALL BE REPLACED AT THE EXPENSE OF THE CONTRACTOR.

ALL TELEPHONE AND ELECTRIC POLES, GAS PIPES, ETC. IN THE WAY OF THE IMPROVEMENT SHALL BE MOVED BY THE UTILITIES PRIOR TO CONSTRUCTION AND SHALL NOT BE INCLUDED IN THE CONTRACT. THE CONTRACTOR SHALL NOTIFY THE RESPECTIVE UTILITIES TO MAKE THE NECESSARY ADJUSTMENTS PRIOR TO THIS CONSTRUCTION.

THE FINAL TOP 4" OF SOIL IN ANY AREA DISTURBED BY THE CONTRACTOR MUST BE ABLE TO SUPPORT VEGETATION.

EXISTING STREET SIGNS AND TRAFFIC SIGNS THAT ARE WITHIN THE CONSTRUCTION LIMITS SHALL BE REMOVED AND RESET BY THE CONTRACTOR. COST OF REMOVING AND RESETTING SHALL BE INCIDENTAL TO EARTH EXCAVATION (SPECIAL).

WHERE THE PROPOSED CONSTRUCTION MEETS AN EXISTING BITUMINOUS SURFACE, OR WHERE SAWING IS NOT STATED ON THE PLANS, THE EXISTING SURFACE SHALL BE SAWED IN A NEAT, STRAIGHT LINE. COST OF SAWING TO BE INCLUDED IN THE CONTRACT UNIT PRICE PER UNIT OF EARTH EXCAVATION (SPECIAL).

PLAN  
DATE: \_\_\_\_\_  
BY: \_\_\_\_\_  
CHECKED: \_\_\_\_\_  
DATE: \_\_\_\_\_  
NOTE: ALL DIMENSIONS ARE IN FEET AND INCHES UNLESS OTHERWISE NOTED.  
NO. \_\_\_\_\_  
PROJECT NAME: \_\_\_\_\_

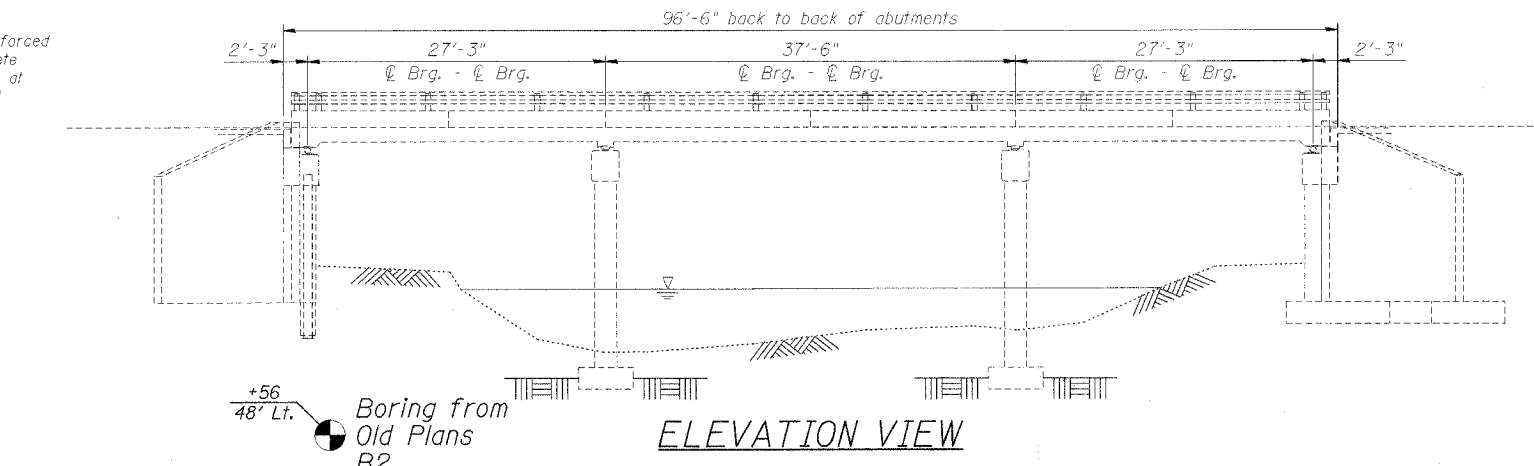
PROFILE  
DATE: \_\_\_\_\_  
BY: \_\_\_\_\_  
CHECKED: \_\_\_\_\_  
DATE: \_\_\_\_\_  
NOTE: ALL DIMENSIONS ARE IN FEET AND INCHES UNLESS OTHERWISE NOTED.  
NO. \_\_\_\_\_  
PROJECT NAME: \_\_\_\_\_

S:\STRUCT\1093D07C1\yofRockFalls\COVERETC.DGN

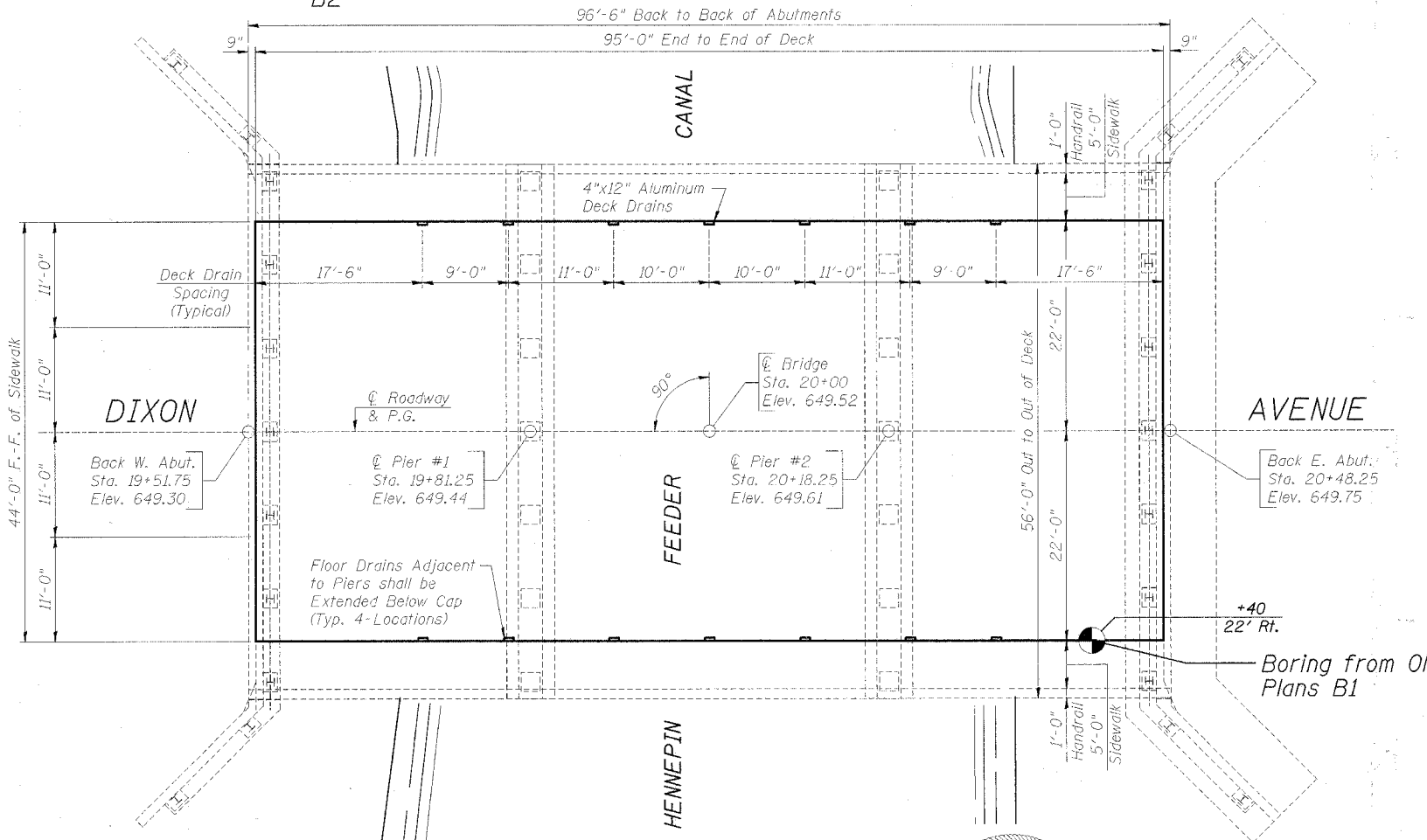
FILE NAME: #FILE#	USER NAME: #USER#	DESIGNED: -	REVISED: -	<b>WILLETT, HOFMANN &amp; ASSOCIATES, INC</b> CONSULTING ENGINEERS DIXON, IL	<b>SCHEDULES &amp; GENERAL NOTES</b>	F.A. RTE. 5560	SECTION 01-00125-00-BR	COUNTY WHITESIDE	TOTAL SHEETS 294	SHEET NO. 4		
PLOT SCALE: #SCALE#	CHECKED: -	REVISED: -	SCALE:			SHEET NO. OF SHEETS	STA. TO STA.	CITY OF ROCK FALLS CONTRACT NO. 05-435				
PLOT DATE: #DATE#	DATE: -	REVISED: -	FED. ROAD DIST. NO. 7 ILLINOIS FED. AID PROJECT									
Revised 6-2-08												

**EXISTING STRUCTURE:** S.N. 098-3000  
 A Three Span (27'-3":37'-6":27'-3") Reinforced  
 Concrete Slab Structure on Closed Concrete  
 Abutments and Reinforced Concrete Piers at  
 Sta. 20+00. No Skew. To be rehabilitated

ROUTE	SECTION	COUNTY	SHEET	TOTAL
5560	01-00125-00-BR	WHITESIDE	14	14
FED. ROAD DIST. NO. 7		ILLINOIS	FED. AID PROJECT: BHM-4062(25)	



**ELEVATION VIEW**



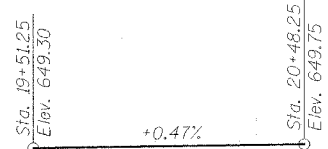
**PLAN VIEW**

**BILL OF MATERIAL - BRIDGE**

ITEM	UNIT	SUB	SUPER	TOTAL
Concrete Removal	Cu Yd		34.7	34.7
Floor Drains	Each		14	14
Concrete Superstructure	Cu Yd		22.1	22.1
Bridge Deck Grooving	Sq Yd		444	444
Protective Coat	Sq Yd		465	465
Furnishing & Erecting Structural Steel	L Sum		1	1
Jack And Remove Existing Bearings	Each		24	24
Reinforcement Bars, Epoxy Coated	Pound		7,820	7,820
Name Plates	Each		1	1
Elastomeric Bearing Assembly, Type 1	Each		24	24
Epoxy Crack Injection	Foot	143		143
Structural Repair Of Concrete (Depth Greater Than 5")	Sq Ft		166	166
Structural Repair Of Concrete (Depth Equal To Or Less Than 5")	Sq Ft		2.0	2.0
Bridge Deck Microsilica Concrete Overlay	Sq Yd		464	464
Bridge Deck Hydro-Scarification	Sq Yd		422	422
Temporary Support System	L Sum		1	1

**GENERAL NOTES:**

Reinforcement bars shall conform to the requirements of ASTM A 706 Gr 60 (IL Modified). See Special Provisions  
 Reinforcement bars designated (E) shall be epoxy coated.  
 Plan dimensions and details relative to existing plans are subject to routine variations. The Contractor shall field verify existing dimensions and details affecting new construction and make necessary approved adjustments prior to construction or ordering of materials. Such variations shall not be cause for additional compensation for a change in scope of the work, however, the Contractor will be paid for the quantity actually furnished based upon the unit price bid for the work.  
 The Inorganic Zinc Rich Primer / Acrylic / Acrylic Paint System shall be used for shop and field painting of bearing assemblies and embedded connection plates except where otherwise noted. The color of the final finish coat for all steel surfaces shall be gray, Munsell No. 5B 7/1. See Special Provision for "Cleaning and Painting New Metal Structures" & "Cleaning and Painting Contact Surface Areas of Existing Steel Structures".  
 The structural steel plates of the Bearing Assembly shall conform to the requirements of AASHTO M 270 Grade 50.  
 \*Includes Deck Surface Only.  
 All Sawcuts shall be Incidental to Contract.  
 Estimated Weight of Structural Steel = 1,570 Pounds



**PROFILE GRADE**

Revised 6-2-08

HENNEPIN CANAL  
 REHABILITATION 2007 BY  
 CITY OF ROCK FALLS  
 SECTION 01-00125-00-BR  
 F.A.U. RTE. 5560 STA. 20+00  
 STR. NO. 098-3000 LOADING HS20

**NAME PLATE LETTERING**

Refer To Std. 515001-02  
 (Nameplate Shall Be Anchored To Concrete Adjacent To Existing Nameplate)

**DESIGN SPECIFICATIONS**

Designed in Accordance with 2002 A.A.S.H.T.O.  
 Standard Specifications - 17th Edition

**LOADING HS20-44**

No Future Wearing Surface Allowed.

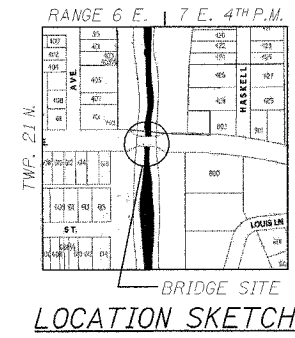
**DESIGN STRESSES**

FIELD UNITS  
 $f'_c = 3,500$  psi  
 $f_y = 60,000$  psi (Reinforcement)



Brian K. Converse  
 DATE: APRIL 7<sup>th</sup>, 2008  
 EXPIRES 11/30/08

"I Certify That To The Best Of My Knowledge, Information And Belief, This Bridge Design Is Structurally Adequate For The Design Loading Shown On The Plans. The Design Is An Economical One Complies With Requirements Of The Current 'AASHTO Standard Specifications For Highway Bridges'."



**BRIDGE SITE LOCATION SKETCH**

**GENERAL PLAN AND ELEVATION  
 DIXON AVENUE OVER HENNEPIN CANAL  
 SECTION 01-00125-00-BR  
 S.N. 098-3000  
 CITY OF ROCK FALLS**

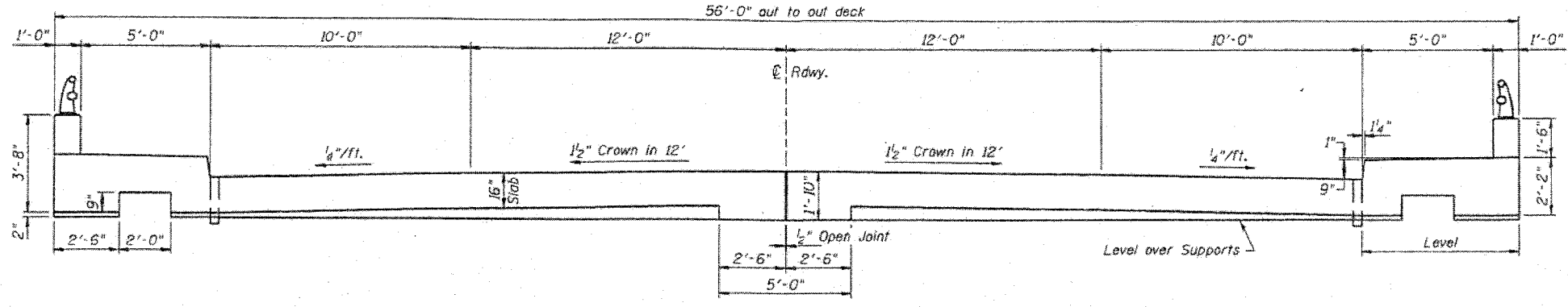


Designed by:  
 B.K. Converse  
 DATE: 03/2008  
 Checked by:  
 M.A. Small  
 DATE: 03/2008  
 Drawn by:  
 F.D. Lachat  
 DATE: 03/2008

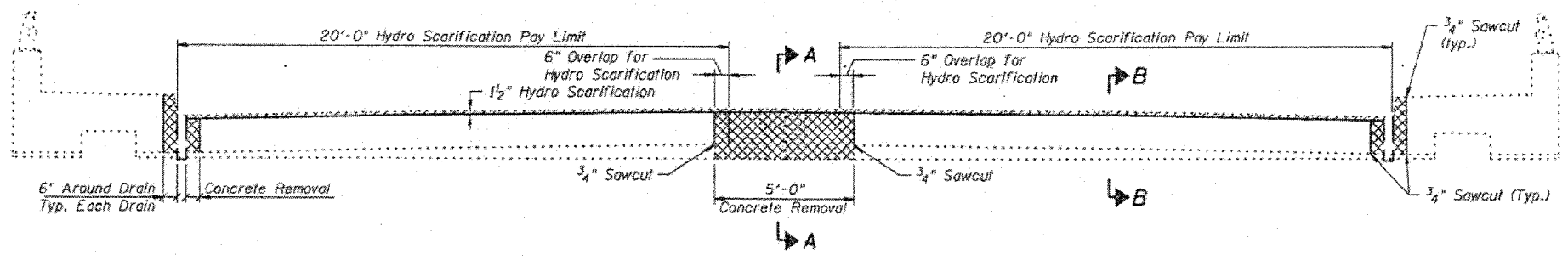
WHA #1093007



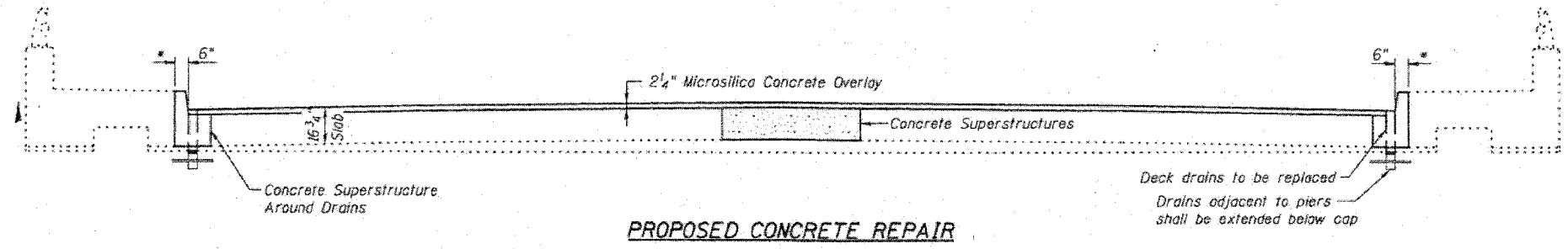




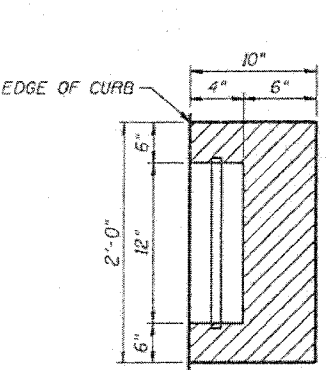
**EXISTING BRIDGE CROSS SECTION**



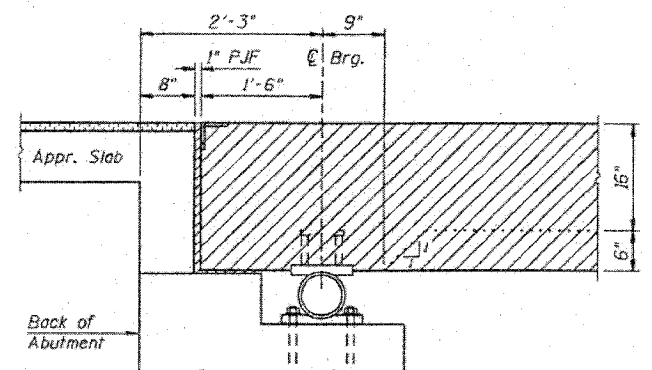
**PROPOSED CONCRETE REMOVAL**



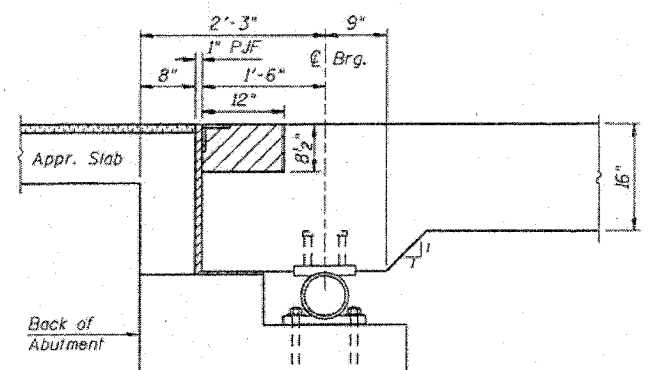
**PROPOSED CONCRETE REPAIR**



**PLAN VIEW OF CONCRETE REMOVAL AROUND DECK DRAINS**  
(14 Total)



**SECTION A-A AT END OF DECK**

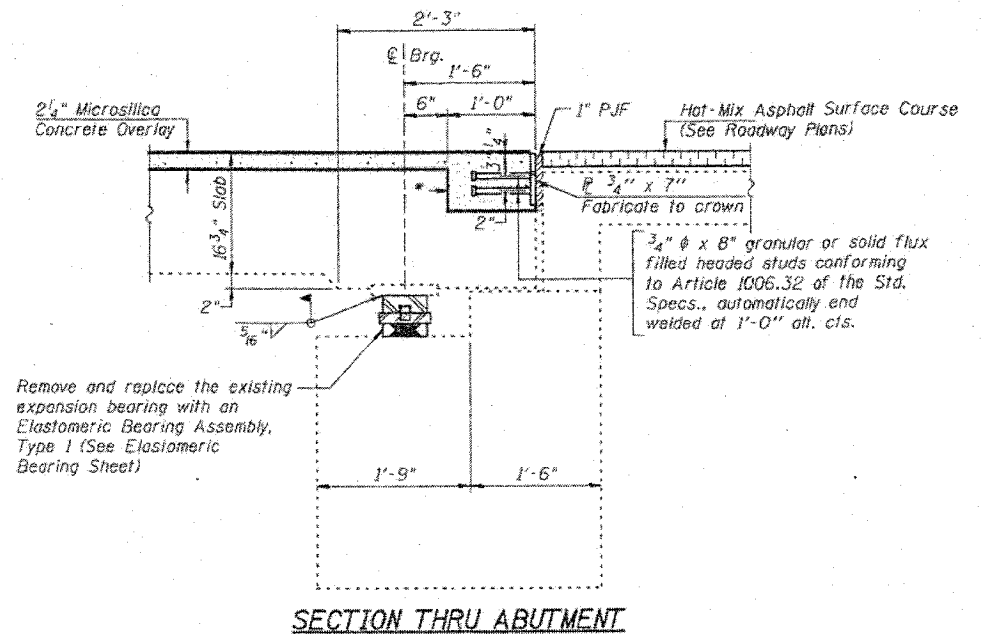
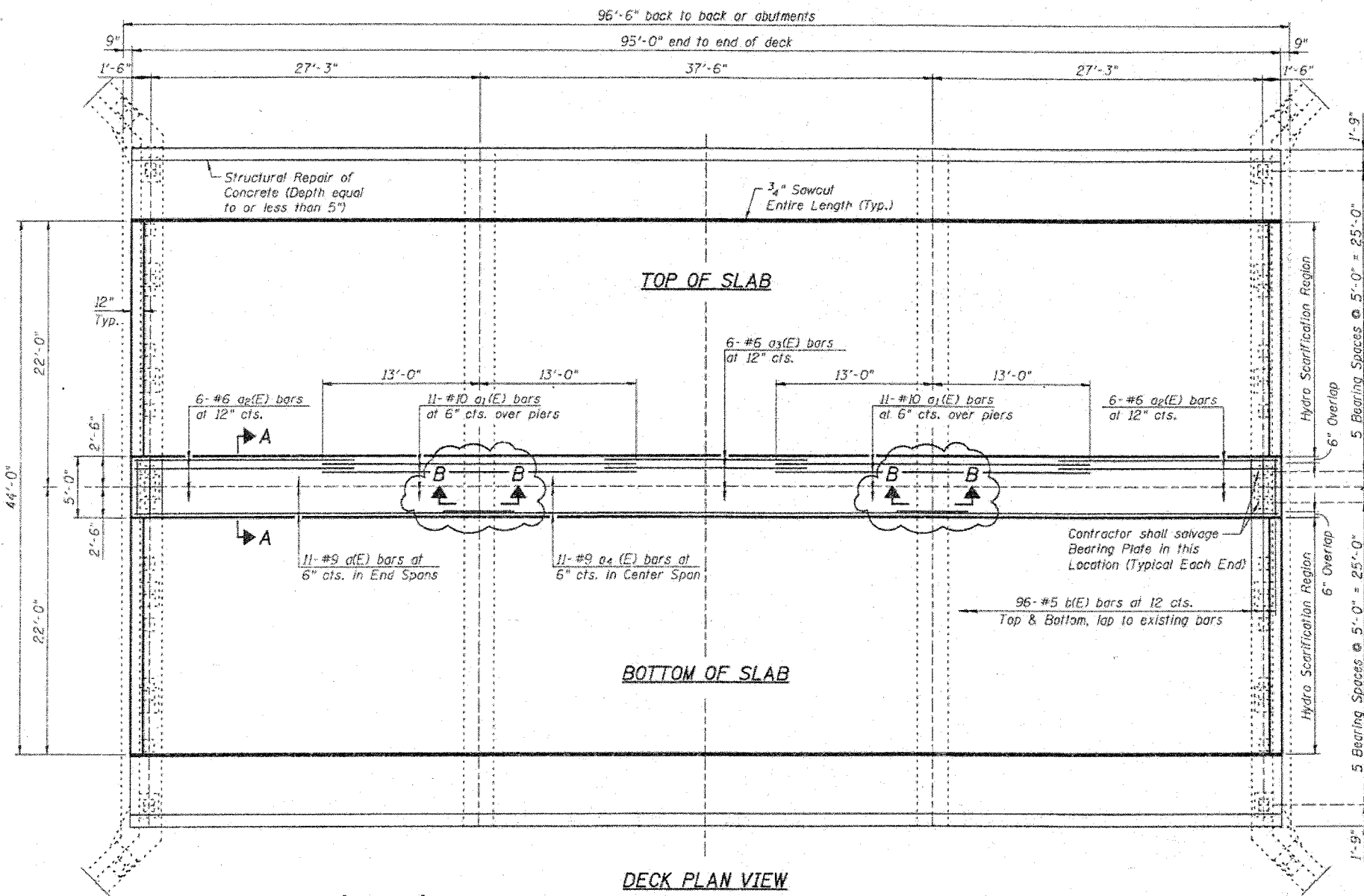


**SECTION B-B AT END OF DECK**

**NOTES:**  
 Hatched areas indicate Concrete Removal.  
 See Structural Sheet 3 of 6 for Deck Plan View and Bill of material.  
 \* Curb entire length of deck shall be repaired in accordance with "Structural Repair of Concrete (Depth Greater than 5)". The repair shall be measured along vertical face for a depth of 10 1/2".  
 Contractor shall perform Hydro Scarification operations prior to Concrete Removal unless authorization is given in writing by engineer.  
 Hatched areas indicate concrete sections to be removed. Perimeters of Concrete Removal areas shall be saw cut 3/4" prior to the removal of the concrete. Existing transverse reinforcement shall be cleaned, straightened and incorporated into the new construction.

**EXISTING AND PROPOSED BRIDGE CROSS SECTIONS  
 DIXON AVENUE OVER HENNEPIN CANAL  
 SECTION 01-00125-00-BR  
 S.N. 098-3000  
 CITY OF ROCK FALLS  
 WHA # 1093007**

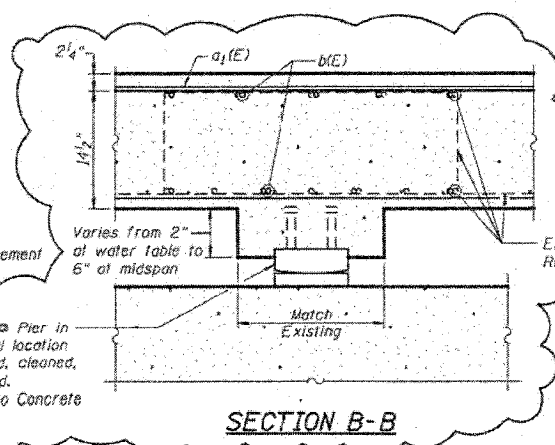
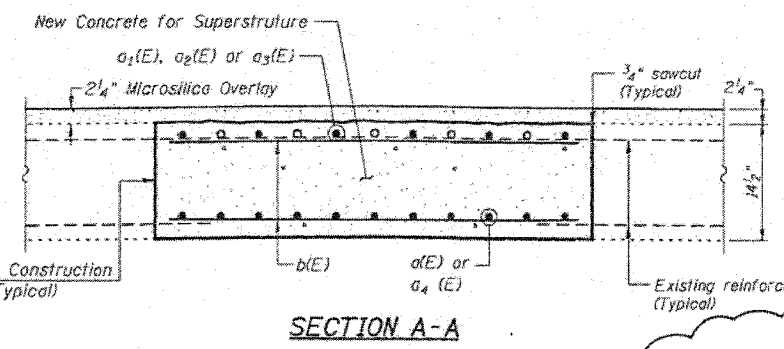
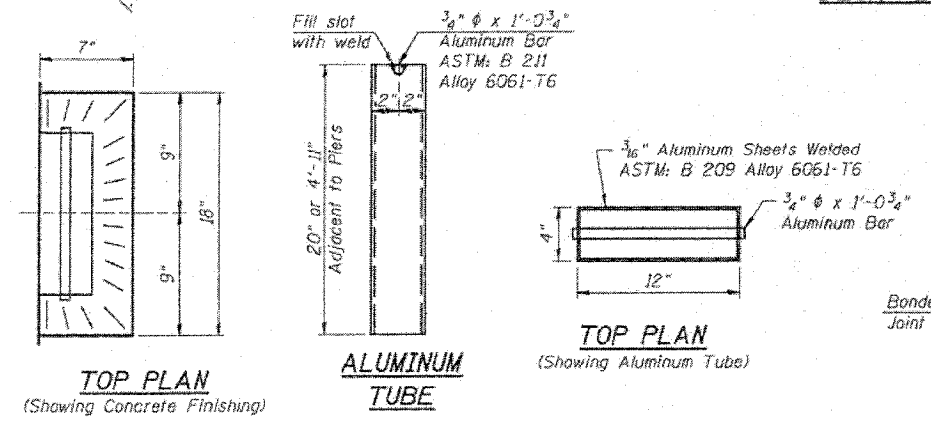
Revised 6-2-08



**SUPERSTRUCTURE BILL OF MATERIAL**

Bar	No.	Size	Length	Shops
a1(E)	22	#10	26'-0"	---
a2(E)	12	#6	18'-2"	---
a3(E)	6	#6	16'-8"	---
a4(E)	11	#9	43'-3"	---
b(E)	192	#5	4'-6"	---
Concrete Removal				Cu. Yd. 34.7
Floor Drains				Each 14
Concrete Superstructure				Cu. Yd. 22.1
Bridge Deck Grooving				Sq. Yd. 444
Protective Coat				Sq. Yd. 465
Furnishing & Erecting Structural Steel				L sum 1
Reinforcement Bars, Epoxy Coated				Lbs. 7,820
Structural Repair Of Concrete (Depth Greater Than 5")				Sq. Ft. 166
Bridge Deck Microsilica Concrete Overlay				Sq. Yd. 464
Bridge Deck Hydro-Scarification				Sq. Yd. 422

SIZE	LAP
#4	1'-8"
#5	2'-2"
#6	2'-7"
#7	3'-5"
#8	4'-6"
#9	5'-9"
#10	7'-3"



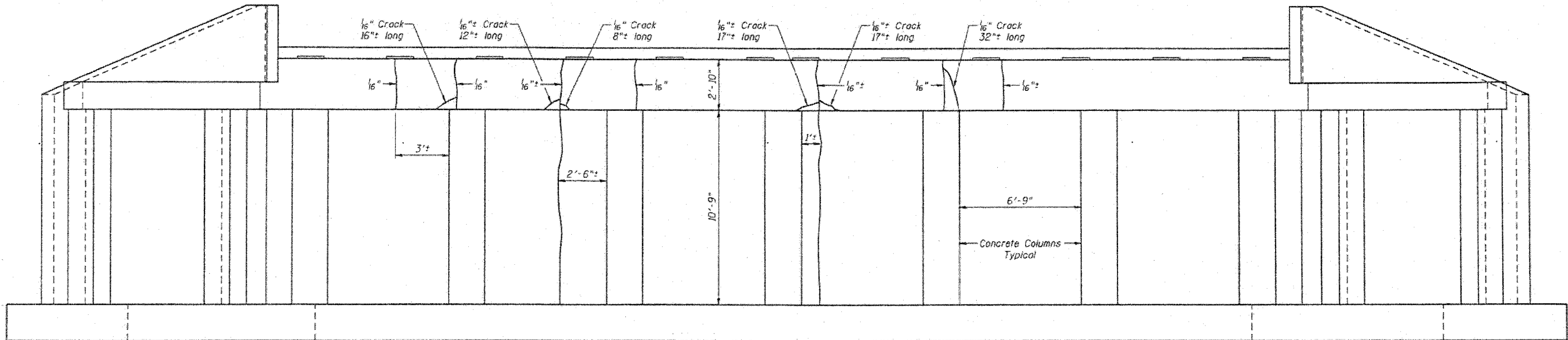
**NOTES:**

- \* Region around armor angle shall be poured and included with bridge deck microsilica concrete overlay.
- Reinforcement bars designated (E) shall be epoxy coated.

**SUPERSTRUCTURE DIXON AVENUE OVER HENNEPIN CANAL SECTION 01-00125-00-BR S.N. 098-3000 CITY OF ROCK FALLS**

WHA # 1093D07  
Revised 6-208





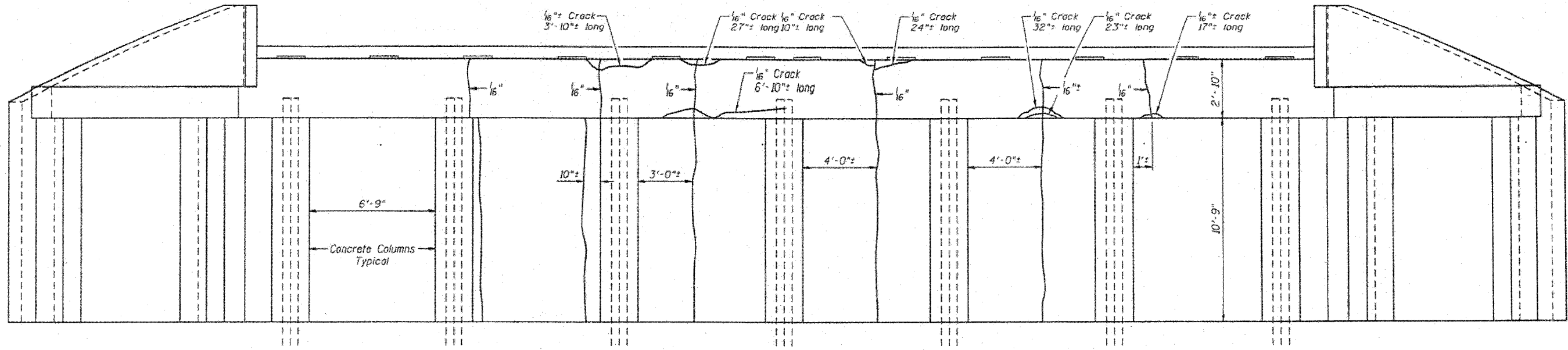
**ELEVATION VIEW**  
(Looking East)

**BILL OF MATERIAL**

Item	Unit	Total
Epoxy Crack Injection	Feet	50

EAST ABUTMENT  
DIXON AVENUE OVER HENNEPIN CANAL  
SECTION 01-00125-00-BR  
S.N. 098-3000  
CITY OF ROCK FALLS  
WHA # 1093DC7

Revised 6-2-08



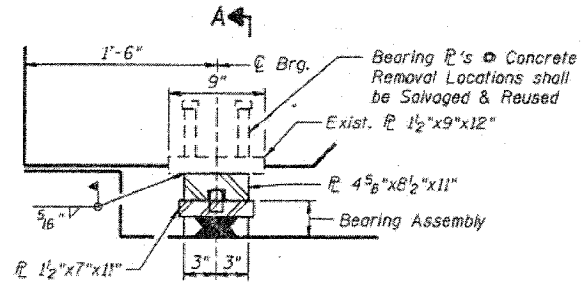
**ELEVATION VIEW**  
(Looking East)

**BILL OF MATERIAL**

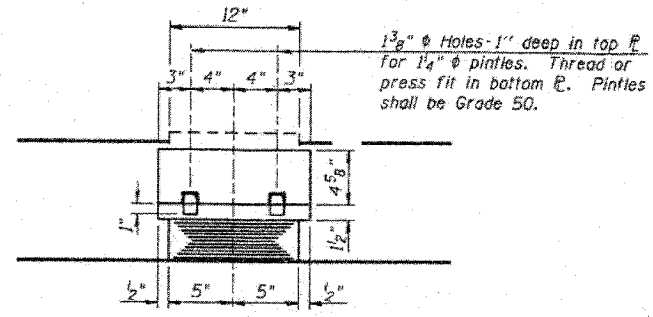
Item	Unit	Total
Epoxy Crack Injection	Feet	93

WEST ABUTMENT  
DIXON AVENUE OVER HENNEPIN CANAL  
SECTION 01-00125-00-BR  
S.N. 098-3000  
CITY OF ROCK FALLS  
WHA # 1093D07

Revised 6-2-08

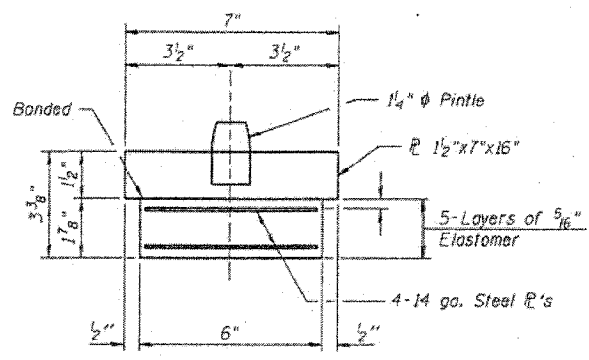


ELEVATION AT ABUT.



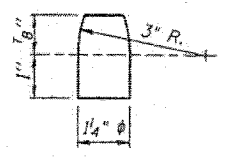
SECTION A-A

**TYPE I ELASTOMERIC EXP. BRG.**



BEARING ASSEMBLY

**NOTE:**  
 Shim bars shall not be placed under Bearing Assembly.  
 Provide two 1/8" Shim bars per bearing.  
 The exposed surface of the existing bearing plates shall be cleaned & painted in accordance with "Cleaning & Painting Contact Surface Areas of Existing Steel Structures". This cost shall be included in the contract price per Each for Elastomeric Bearing Assembly Type I.



PINTLE

Boring No.	Station	Offset	Ground Surface	Elevation	N	Qu	U/s.f.	W (%)	Surface Water El.	Groundwater El. at Completion	After _____ Hours
2	1+32	48' Lt.	637.7	0						635.7	
			Augered 3.5' in ground to seat auger						Note: This hole first tried at 36' Lt. of C. Auger rejected at 3.5' depth by boulder.		
			H <sub>2</sub> O level	634.2							
			Medium, brown sand & gravel w/ boulders	-5	20						
			Dense, brown, sand & gravel w/ boulders	40							
			Sampler rejected fluid brown sand on end of sampler	-10	100						
			Began coring Elev. 626.7								
			Hard, yellow brown silt Stone, Small geodes of Calcite crystals	-5							
			Stopped coring Elev. 622.2	-15							

Boring No.	Station	Offset	Ground Surface	Elevation	N	Qu	U/s.f.	W (%)
1	2+16	22' Rt.	637.7	0				
			Augered 3.0' in ground					
			Auger rejected at this depth so began to core.					
			Began Coring Elev. 634.7					
			Cored 9.0' yellow brown, hard silt stone & gravel recovered from core barrel					
			Stopped Coring Elev. 625.7					

EXISTING BORINGS FOR INFORMATION

REACTION TABLE	
LOAD	REACTION
Dead Load	13.00 k
Live Load	14.90 k
Impact	4.47 k
Total	32.37 k
Girder Slope	0.47%
Expansion Length	46'

BILL OF MATERIAL

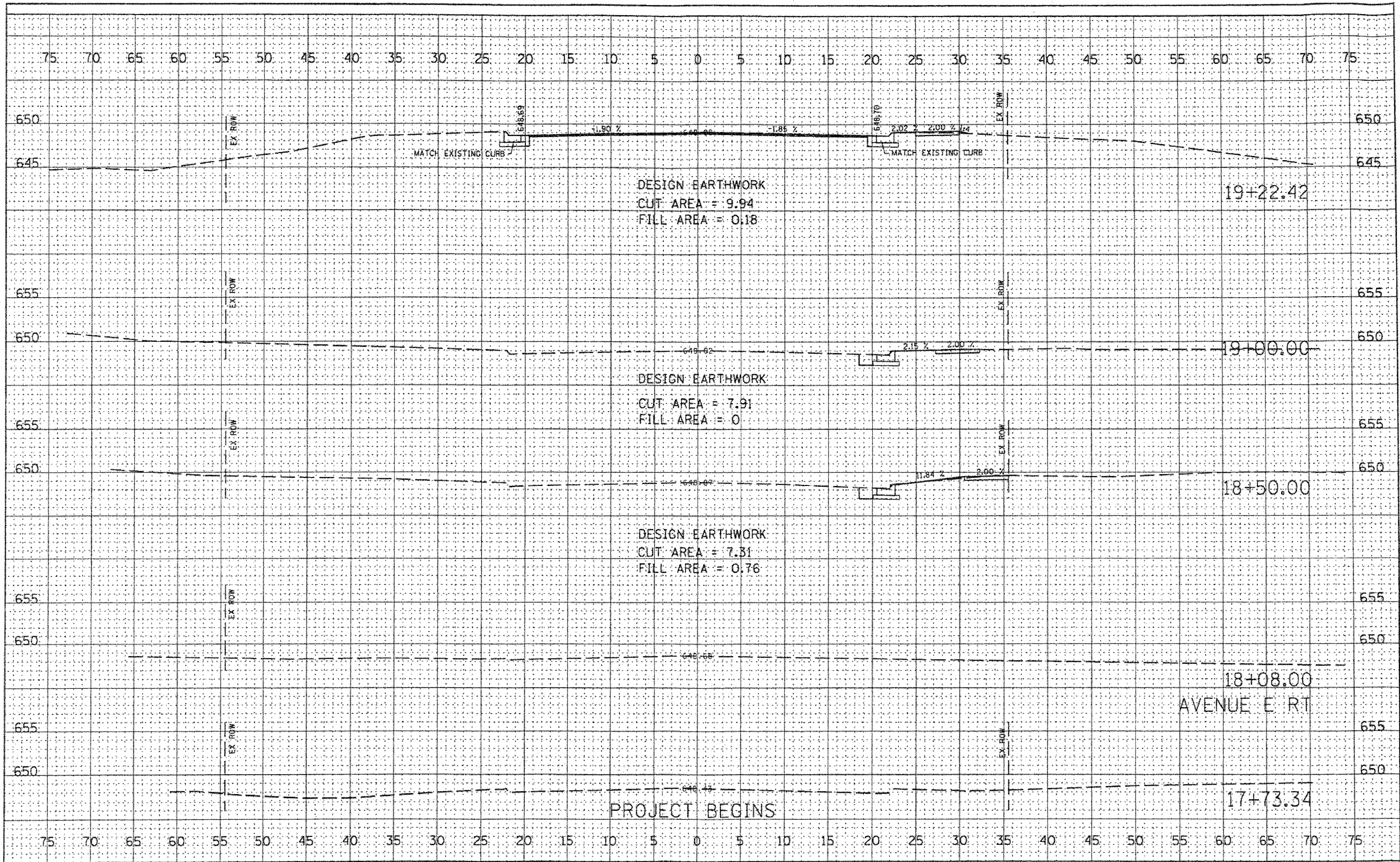
Item	Unit	Total
Elastomeric Bearing Assembly, Type I	Each	24

TYPE I ELASTOMERIC BEARING DETAILS  
 DIXON AVENUE OVER HENNEPIN CANAL  
 SECTION 01-00125-00-BR  
 S.N. 098-3000  
 CITY OF ROCK FALLS  
 WHA # 1093D07

Revised 6-2-08

DATE	
BY	
DESIGNED	
CHECKED	
AREA	
TEMP. DATE	
PLOTTED	
FORWARDED	
NO.	
NOTE BOOK	
FINAL SURVEY	

DATE	
BY	
DESIGNED	
CHECKED	
AREA	
TEMP. DATE	
PLOTTED	
FORWARDED	
NO.	
NOTE BOOK	
ORIGINAL SURVEY	



**WILLETT, HOFMANN & ASSOCIATES, INC.**  
**CONSULTING ENGINEERS**  
 800 East Second Street, Dixon, IL 61021  
 Phone: 815.294.3381 Fax: 815.294.3383  
 Design Firm # 184-00518  
[www.willett-hofmann.com](http://www.willett-hofmann.com)

USER NAME	DESIGNED	REVISOR
PLDT SCALE	DRAWN	REVISOR
PLDT DATE	CHECKED	REVISOR
	DATE	REVISOR

SCALE	SHEET NO. 15 OF	SHEETS	STA. 17+73.34	TO STA. 19+22.42
-------	-----------------	--------	---------------	------------------

**DIXON AVENUE - Cross Sections**

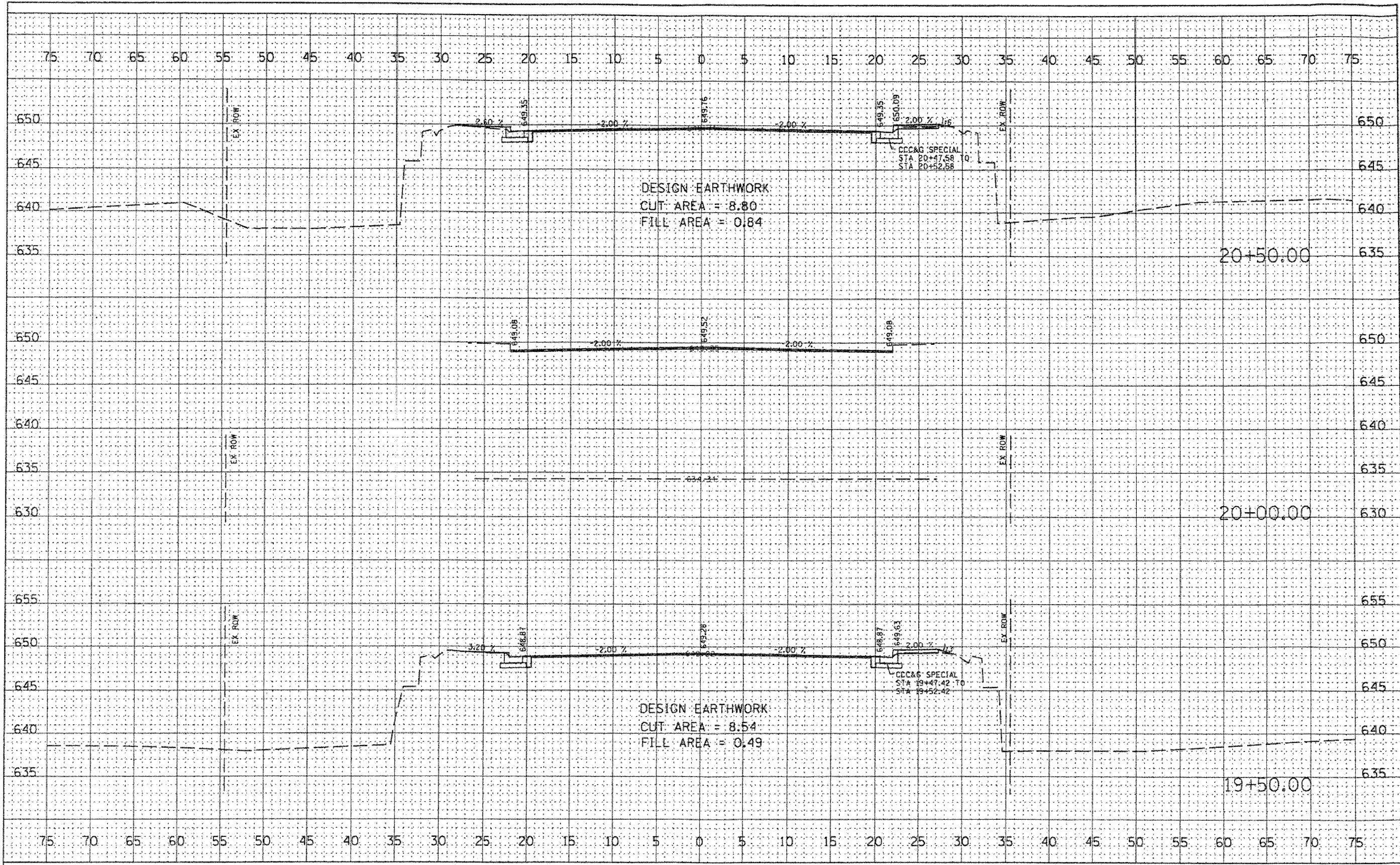
F.A. RTE.	SECTION	COUNTY	TOTAL SHEETS	SHEET NO.
5560	D1-00125-00-BR	WHITESIDE	14	12
CITY OF ROCK FALLS		CONTRACT NO.	85438	
FED. ROAD DIST. NO. 1 ILLINOIS FED. AID PROJECT				

Revised 6-2-08



DATE	
BY	
FINAL SURVEY	
DESIGNED	
PLOTTED	
NOTE BOOK	
AREAS CHECKED	

DATE	
BY	
ORIGINAL SURVEY	
DESIGNED	
PLOTTED	
NOTE BOOK	
AREAS CHECKED	



**WILLET, HOFMANN & ASSOCIATES, INC.**  
**CONSULTING ENGINEERS**  
 601 East Second Street Dixon, IL 61021  
 Phone 815.284.3381 Fax 815.284.3385  
 Design Firm # 184-00916  
 www.willett-hofmann.com

USER NAME =	DESIGNED -	REVISED -
PLLOT SCALE =	DRAWN -	REVISED -
PLLOT DATE =	CHECKED -	REVISED -
	DATE -	REVISED -

**DIXON AVENUE - Cross Sections**  
 SCALE: SHEET NO. 16 OF SHEETS STA. 19+50.00 TO STA. 20+50.00

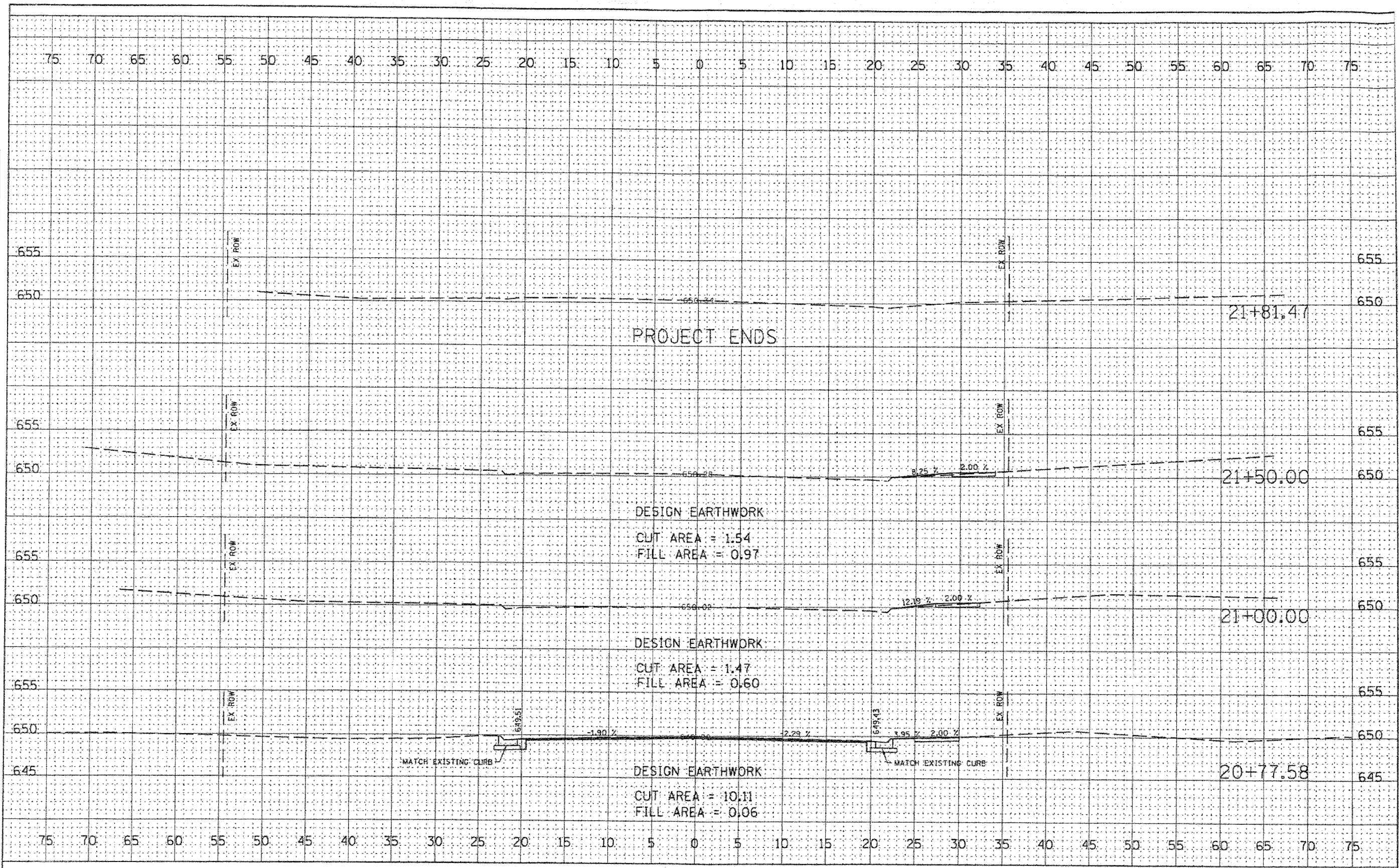
F.A. RTE.	SECTION	COUNTY	TOTAL SHEETS	SHEET NO.
5560	01-00125-00-BR	WHITESIDE	14	13
CITY OF ROCK FALLS		CONTRACT NO. 05-436		
FED. ROAD DIST. NO. 1 ILLINOIS/FED. AID PROJECT				

*Revised 6-7-08*



DATE	
BY	
DESIGNED	
DRAWN	
CHECKED	
DATE	
FILE NO.	

DATE	
BY	
DESIGNED	
DRAWN	
CHECKED	
DATE	
FILE NO.	



<b>WILLETT, HOFMANN &amp; ASSOCIATES, INC.</b> CONSULTING ENGINEERS 805 East Second Street Dixon, IL 61021 Phone: 815-294-3388 Fax: 815-294-2328 Design Firm # 184-00918 www.willett-hofmann.com	USER NAME	DESIGNED	REVISED	<b>DIXON AVENUE - Cross Sections</b> SCALE: SHEET NO. 17 OF SHEETS STA. 20+77.58 TO STA. 21+81.47	F.A. RTE.	SECTION	COUNTY	TOTAL SHEETS	SHEET NO.
	PLOT SCALE	CHECKED	REVISED		5560	01-00125-00-BR	WHITESIDE	14	14
PLOT DATE	DATE	REVISED			CITY OF ROCK FALLS		CONTRACT NO. 65-438		
					FED. ROAD DIST. NO. 3 ILLINOIS FED. AID PROJECT				

Revised 6-2-09