

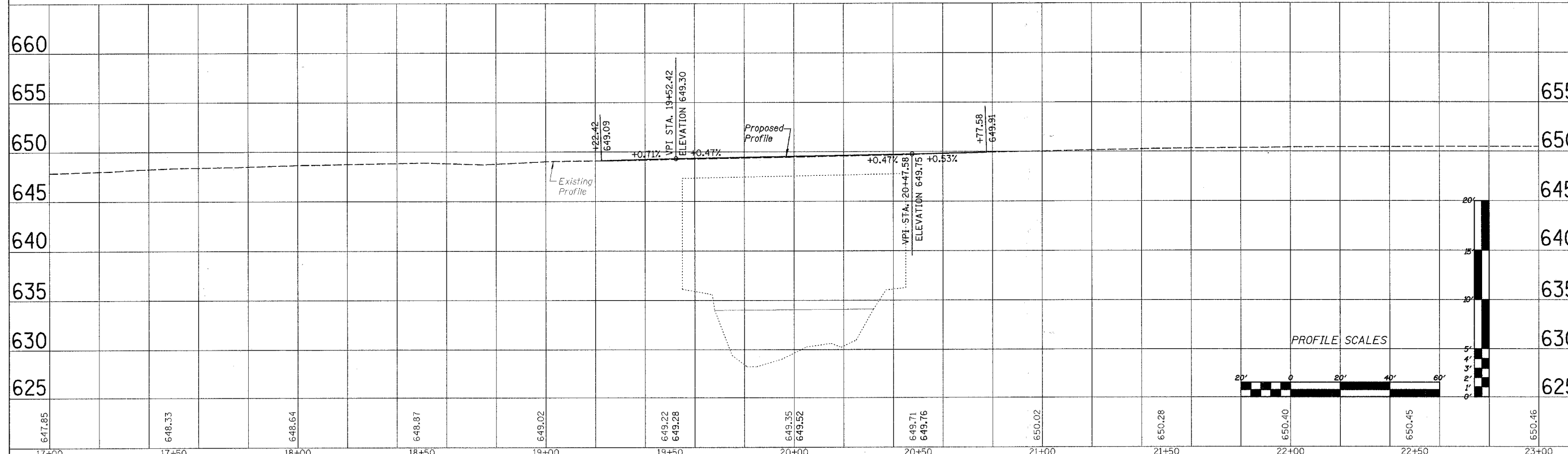
Existing Structure: S.N. 098-3000  
 A Three Span (27'-3", 37'-6", 27'-3") Slab Type Structure w/Closed Concrete Abutments and Open Concrete Piers @ Sta. 20+00. Skewed 0°. To be Rehabilitated.

NOTE:  
 HOT-MIX ASPHALT SURFACE REMOVAL - BUTT JOINT IS 39' x 30' ON EACH SIDE OF BRIDGE. 1' ON EACH SIDE OF THE CURB SHALL BE FULL DEPTH HMA.



DATE	BY
SUPERSEDED	
PLOTTED	
CHECKED	
NOTE BOOK	
NO.	
STRUCTURE	
NO.	
CONTRACT	
NO.	

DATE	BY
SUPERSEDED	
PLOTTED	
CHECKED	
NOTE BOOK	
NO.	
STRUCTURE	
NO.	
CONTRACT	
NO.	



FILE NAME =	USER NAME = #USER#	DESIGNED -	REVISED -	<b>WILLET, HOFMANN &amp; ASSOCIATES, INC</b> <b>CONSULTING ENGINEERS</b> <b>DIXON, IL</b>	<b>DIXON AVENUE - PLAN AND PROFILE</b>	F.A. RTE. 5560 SECTION 01-00125-00-BR COUNTY WHITESIDE TOTAL SHEETS 17 SHEET NO. 5
#FILE#	PLOT SCALE = #SCALE#	DRAWN -	REVISED -			
	PLOT DATE = #DATE#	CHECKED -	REVISED -			
		DATE -	REVISED -			
SCALE: SHEET NO. OF SHEETS STA. 22+50 TO STA. 28+00						FED. ROAD DIST. NO. ILLINOIS FED. AID PROJECT

S:/STRUCT/1093D07CityofRockFalls/ppDIXONAVE2.dgn