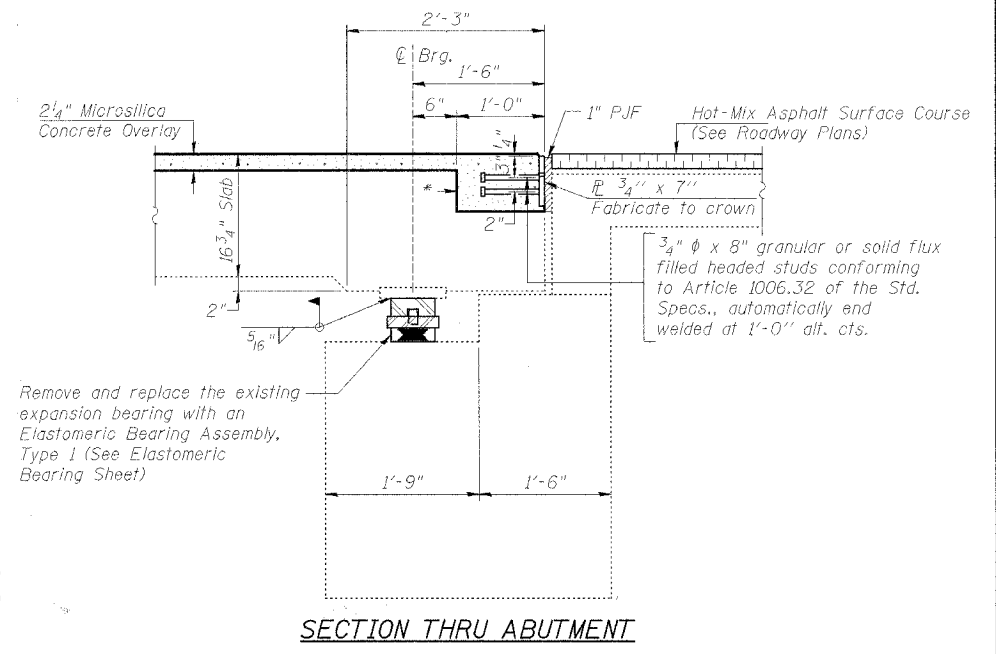
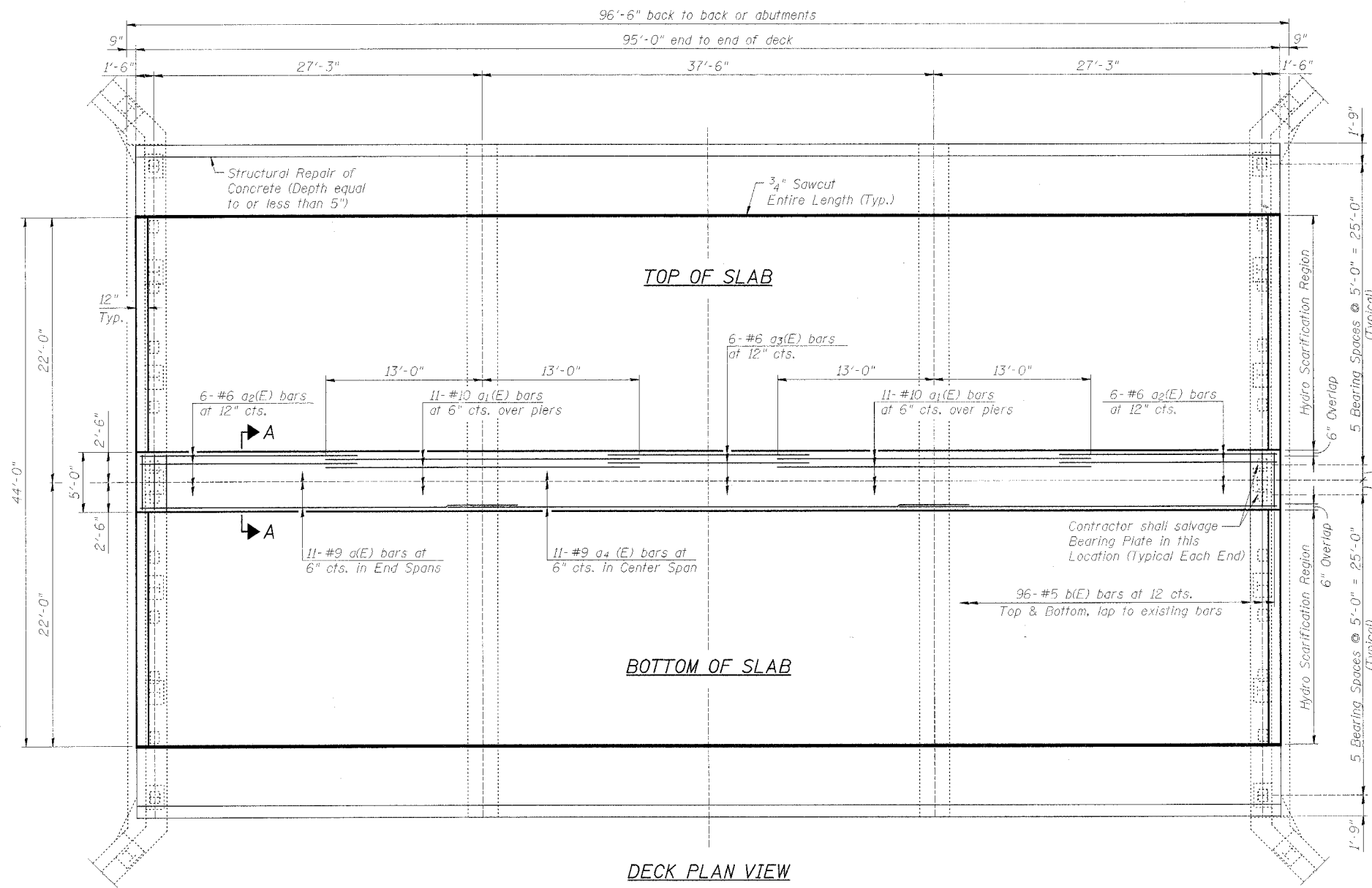


PROJECT	SECTION	COUNTY	TOWNSHIP	SHEET
5560	01-00125-00-BR	WHITESIDE	17	10
FED. ROAD DIST. NO. 7	ILLINOIS	FED. AID PROJECT: BHM-4062(25)		

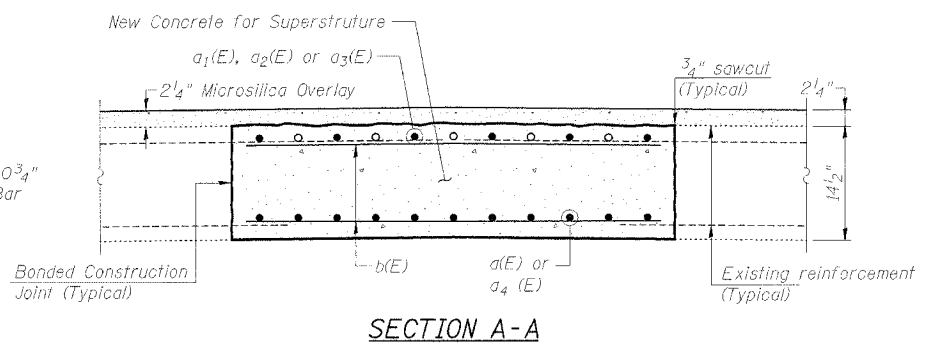
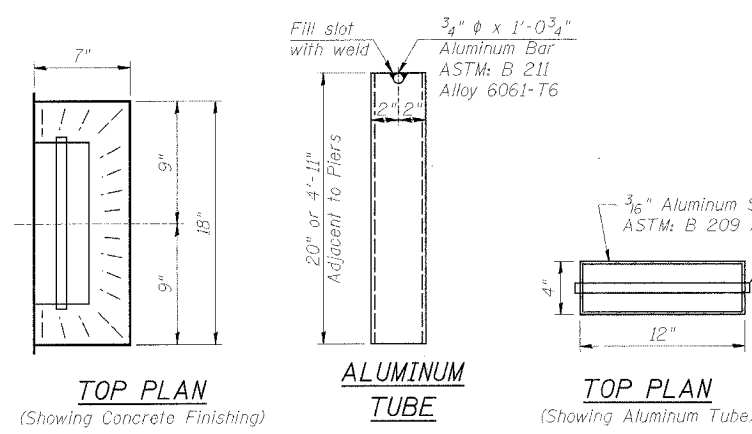
Structural Sheet 3 of 6



SUPERSTRUCTURE BILL OF MATERIAL

Bar	No.	Size	Length	Shape
a(E)	22	#9	31'-6"	—
a1(E)	22	#10	26'-0"	—
a2(E)	12	#6	18'-2"	—
a3(E)	6	#6	16'-8"	—
a4(E)	11	#9	43'-3"	—
b(E)	192	#5	4'-6"	—

Concrete Removal	Cu. Yd.	34.7
Floor Drains	Each	14
Concrete Superstructure	Cu. Yd.	22.1
Bridge Deck Grooving	Sq. Yd.	444
Protective Coat	Sq. Yd.	465
Furnishing & Erecting Structural Steel	L sum	1
Reinforcement Bars, Epoxy Coated	Lbs.	7,820
Structural Repair Of Concrete (Depth Greater Than 5")	Sq. Ft.	166
Bridge Deck Microsilica Concrete Overlay	Sq. Yd.	464
Bridge Deck Hydro-Scarification	Sq. Yd.	422



MIN. LAP SIZE

SIZE	LAP
#4	1'-8"
#5	2'-2"
#6	2'-7"
#7	3'-5"
#8	4'-6"
#9	5'-9"
#10	7'-3"

NOTES:
 * Region around armor angle shall be poured and included with bridge deck microsilica concrete overlay.
 Reinforcement bars designated (E) shall be epoxy coated.

SUPERSTRUCTURE
DIXON AVENUE OVER HENNEPIN CANAL
SECTION 01-00125-00-BR
S.N. 098-3000
CITY OF ROCK FALLS
 WIA # 1093D07