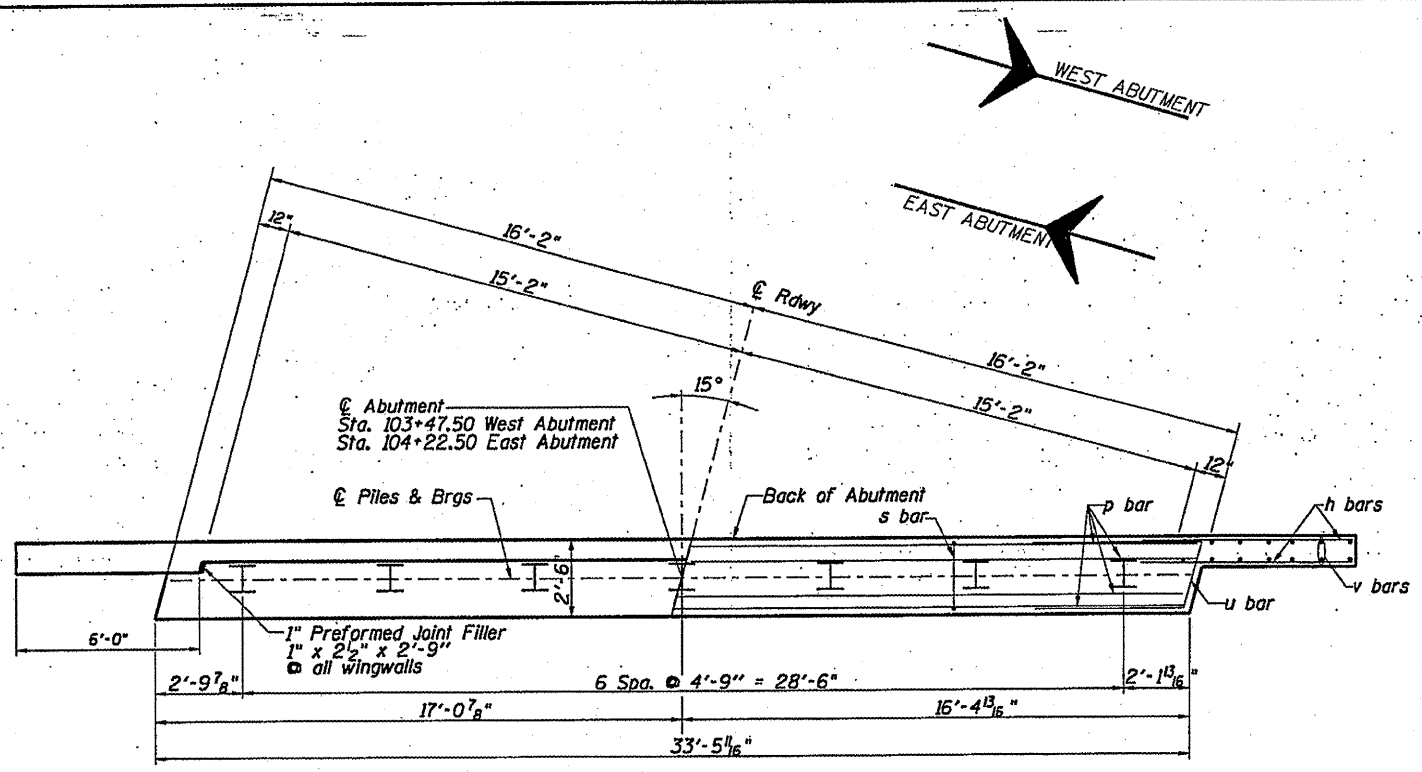
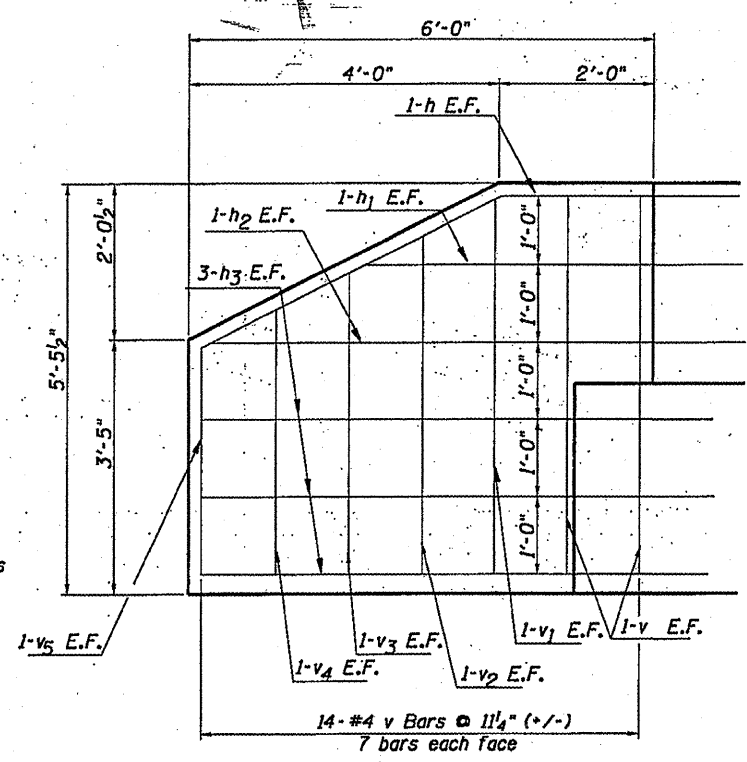


ROUTE NO.	SECTION	COUNTY	TOTAL SHEETS	SHEET NO.
CH 20	06-00146-00-BR	HENRY	9	7
STA.	TO STA.			
F.H.W.A. REG.	ILLINOIS PROJECT			

85439

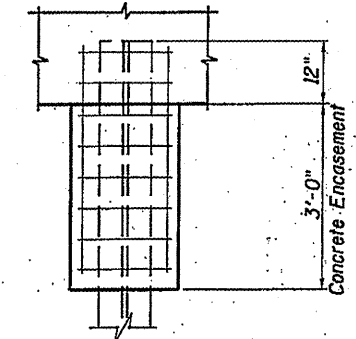


NOTE: All edges shall have Standard 3/4" Chamfer, except as noted.

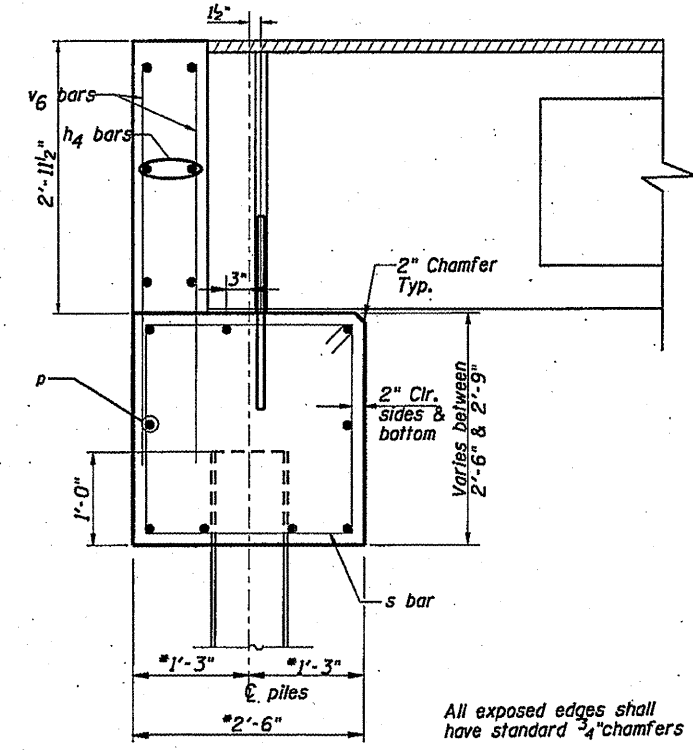
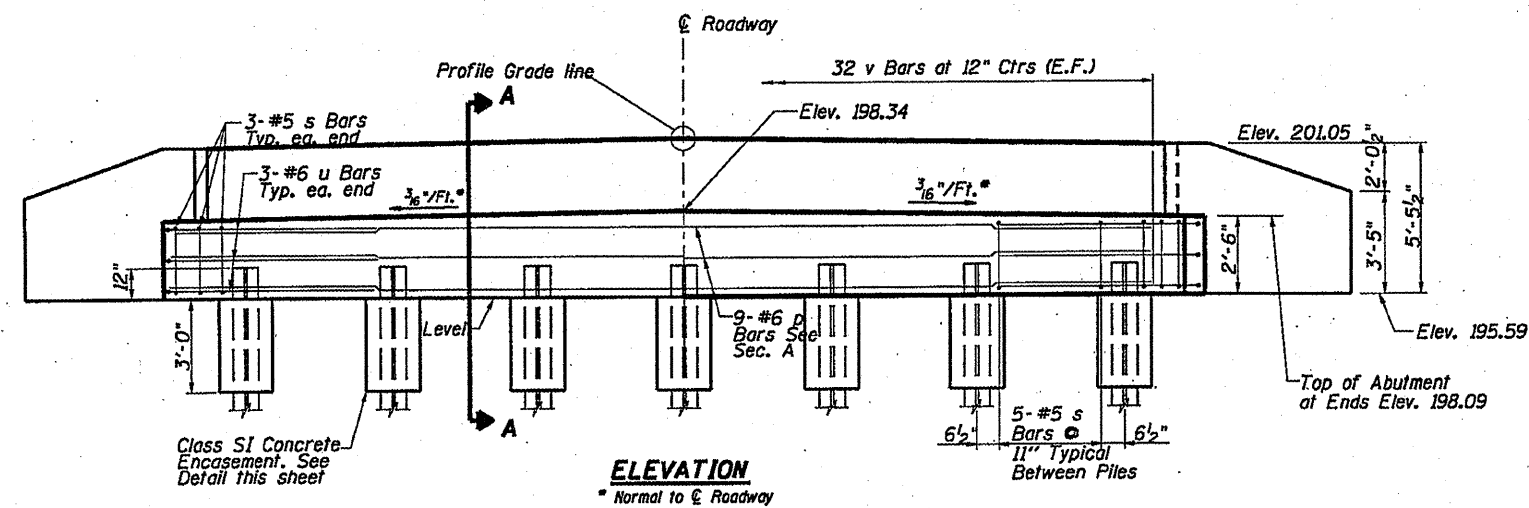


WINGWALL ELEVATION

Southeast wingwall shown, Northwest wingwall similar. Southwest and Northeast wingwall will have the Back Face and Front Face designations reversed. Wingwalls shall be poured after beams are in place.

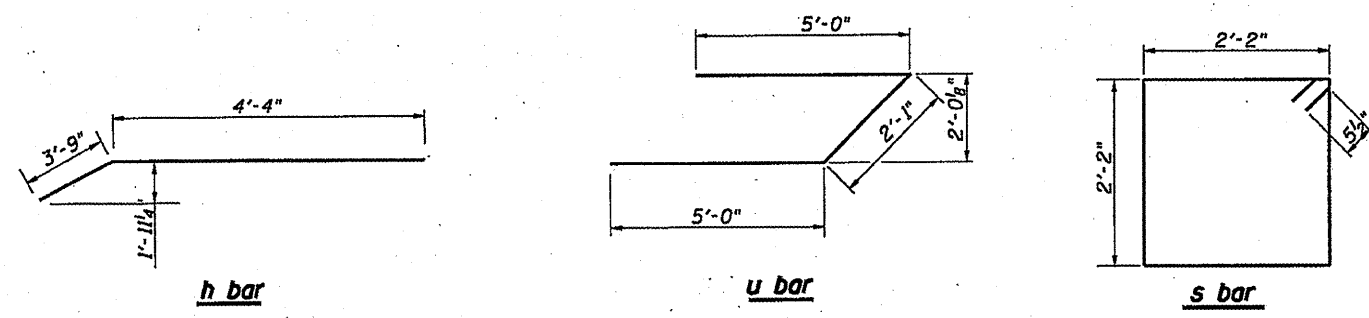


Welded wire fabric 6x6-W4.0xW4.0 weighing 58#/100 sq. ft. The cost of Excavation, Concrete Encasement and Reinforcement is included with Concrete Encasement. Forms for Encasement may be omitted when soil conditions permit.



PILE DATA

Type: Steel HP10x42
Nominal Required Bearing: 148 kips
Allowable Resistance Available: 74 kips
Estimated Length: 53' West Abutment
40' East Abutment
Number of Production Piles: 12
Number of Test Piles: 2



BILL OF MATERIAL - 2 ABUTS.

Bar	No.	Size	Length	Shape
h	8	#5	8'-1"	┌───┐
h ₁	8	#5	6'-0"	┌───┐
h ₂	8	#5	7'-10"	┌───┐
h ₃	24	#5	8'-0"	┌───┐
h ₄	12	#5	31'-0"	┌───┐
p	18	#6	33'-0"	┌───┐
s	72	#5	9'-7"	┌───┐
u	12	#6	12'-1"	┌───┐
v	16	#4	5'-0"	┌───┐
v ₁	8	#4	4'-11"	┌───┐
v ₂	8	#4	4'-6"	┌───┐
v ₃	8	#4	4'-0"	┌───┐
v ₄	8	#4	3'-7"	┌───┐
v ₅	8	#4	3'-1"	┌───┐
v ₆	128	#4	5'-0"	┌───┐

Concrete Structures	Cu. Yds.	25.9
Reinforcement Bars	Lbs.	3190
Test Pile, Steel HP10x42	Each	2
Furn. Steel Piles, HP10x42	Foot	558
Driving Piles	Foot	558
Pile Shoes	Each	12
Name Plate	Each	1
Concrete Encasement	Cu. Yds.	3.8
Structure Excavation	Cu. Yds.	116

All exposed edges shall have standard 3/4" chamfers

B.F. = Back Face
F.F. = Front Face
E.F. = Each Face

ABUTMENT

SECTION: 06-00146-00-BR
HENRY COUNTY
C STATION 103+85

Bridge - Abutments.dgn 4/2/2008 3:59:28 PM