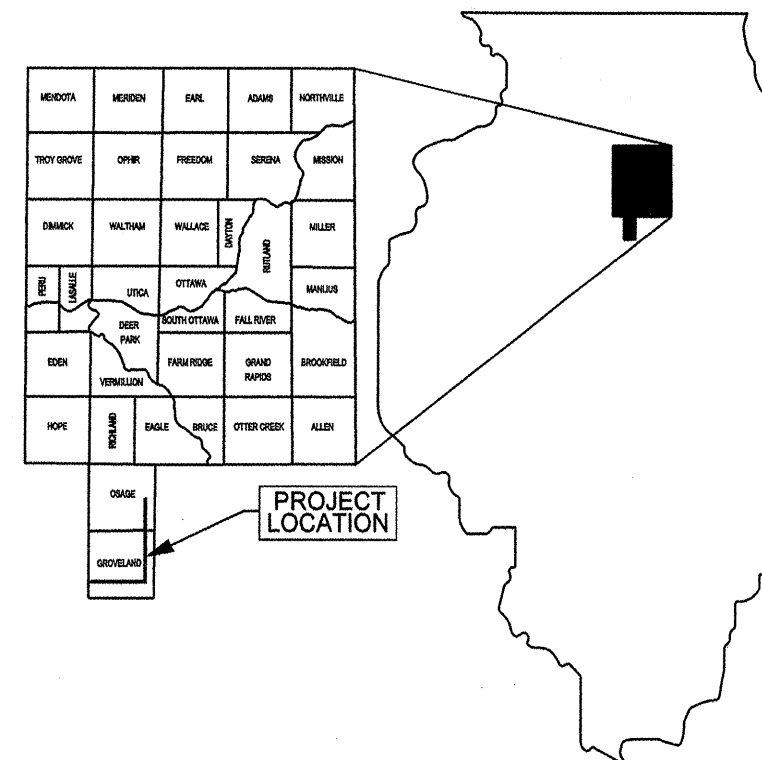


COUNTY	SECTION	F.A.S. RTE. HWY. NO.	SHEET NO.
LASALLE	08-00323-00-RS	170 C.H. 44	1 OF 6

**STATE OF ILLINOIS
DEPARTMENT OF TRANSPORTATION
DIVISION OF HIGHWAYS
BUREAU OF LOCAL ROADS AND STREETS
LASALLE COUNTY**

**PLANS FOR PROPOSED
COUNTY PROJECT**

F.A.S. 170 (C.H. 44)
SECTION 08-00323-00-RS
PROJECT NO. RS-170 (101) JOB NO. C-93-059-08



INDEX OF SHEETS

1. COVER SHEET
2. TYPICAL SECTIONS & GENERAL NOTES
3. TYPICAL SECTIONS
4. SUMMARY OF QUANTITIES & QUANTITY SCHEDULES
5. QUANTITY SCHEDULES
6. DETAILS

HIGHWAY STANDARDS

701306-01	TRAFFIC CONTROL AND PROTECTION
701311-02	TRAFFIC CONTROL AND PROTECTION
701901	TRAFFIC CONTROL DEVICES
78001-01	TYPICAL PAVEMENT MARKINGS
B.L.R. 24-1	MAILBOX TURNOUT FOR LOCAL ROADS
BLR 23-2	
BLR 26	

A.D.T. (2006)

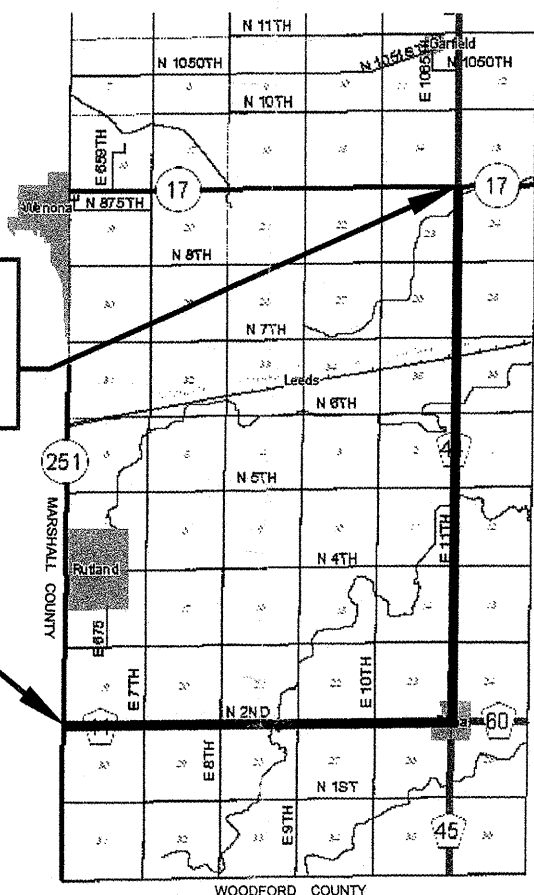
N. 2nd ROAD = 400
E. 11th ROAD = 450

PREVIOUS SECTIONS

<u>N. 2nd ROAD</u>	<u>E. 11th ROAD</u>
107W&RS (1970)	(1)W&RS (1986)
107RS-1 (1994)	98-00282-00-RS

**PROJECT BEGINS
STA. 10+45
45' EAST OF
IL. RTE. 251 E.O.P.**

**PROJECT ENDS
STA. 647+82
48' SOUTH OF
IL. RTE. 17 E.O.P.**



THESE PLANS WERE PREPARED BY A FULL-TIME MEMBER OF MY STAFF WORKING UNDER MY PERSONAL SUPERVISION.

LAWRENCE J. KINZER
 REGISTERED PROFESSIONAL ENGINEER OF ILLINOIS
 DATE: 3-3-2008
 LAWRENCE J. KINZER
 LASALLE COUNTY ENGINEER
 I.R.P.E. NO. 62-40162 EXP. 11/30/09

THE ACCEPTANCE OF THIS PROJECT IS BASED ON THE MINIMUM DESIGN CRITERIA FOR A FEDERAL-AID 3-R LAPP PROJECT.

STATE OF ILLINOIS
DEPARTMENT OF TRANSPORTATION
DIVISION OF HIGHWAYS

PASSED: 03-06 20 08

Bernard L. Ly
DISTRICT ENGINEER OF LOCAL ROADS AND STREETS

APPROVED: 03-06 20 08

George F. Ryan
DEPUTY DIRECTOR OF HIGHWAYS, REGION ENGINEER

CALL JULIE
 48 Hours Before You Dig
 1 - 800 - 892 - 0123

GROSS LENGTH = NET LENGTH = 63,737 FT. = 12.071 MI.