

F.A.S. RTE.	SECTION	COUNTY	TOTAL SHEETS	SHEET NO.
666	*	DOUGLAS	279	1

99-00080-00-RP

INDEX OF SHEETS

- 1 COVER SHEET
- 2 - 8 GENERAL NOTES, SUMMARY, SCHEDULES
- 9 MAINTENANCE OF TRAFFIC
- 10 - 17 EXISTING - PROPOSED TYPICALS
- 18 - 59 PLAN & PROFILE SHEETS
- 60 - 72 STRUCTURE PLANS
- 73 - 85 INTERSECTION DETAILS
- 86 - 90 PAVEMENT MARKING PLANS
- 91 - 100 EROSION CONTROL PLANS
- 101 - 102 MISC. DETAILS
- 103 - 257 CROSS-SECTIONS, FAS 666
- 258 - 263 CROSS-SECTIONS, TR 8 (100 E)
- 264 - 268 CROSS-SECTIONS, TR 18 (200 E)
- 269 - 271 CROSS-SECTIONS, TR 28 (275 E)
- 272 - 276 CROSS-SECTIONS, FAS 670 (CH 26)
- 277 - 279 CROSS-SECTIONS, TR 54 (425 E)

STATE OF ILLINOIS
DEPARTMENT OF TRANSPORTATION
DIVISION OF HIGHWAYS
PROPOSED
HIGHWAY PLANS

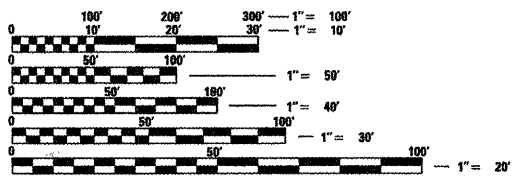
DOUGLAS COUNTY
CH 11 ROUTE (FAS 666)
SECTION 99-00080-00-RP
JOB NO. C-95-323-07
PROJECT NO. RS-666(106)



LOCATION OF SECTION INDICATED THUS: - [Symbol]

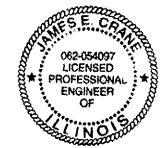
STANDARDS

SEE SHEET #2



FULL SIZE PLANS HAVE BEEN PREPARED USING STANDARD ENGINEERING SCALES. REDUCED SIZED PLANS WILL NOT CONFORM TO STANDARD SCALES. IN MAKING MEASUREMENTS ON REDUCED PLANS, THE ABOVE SCALES MAY BE USED.

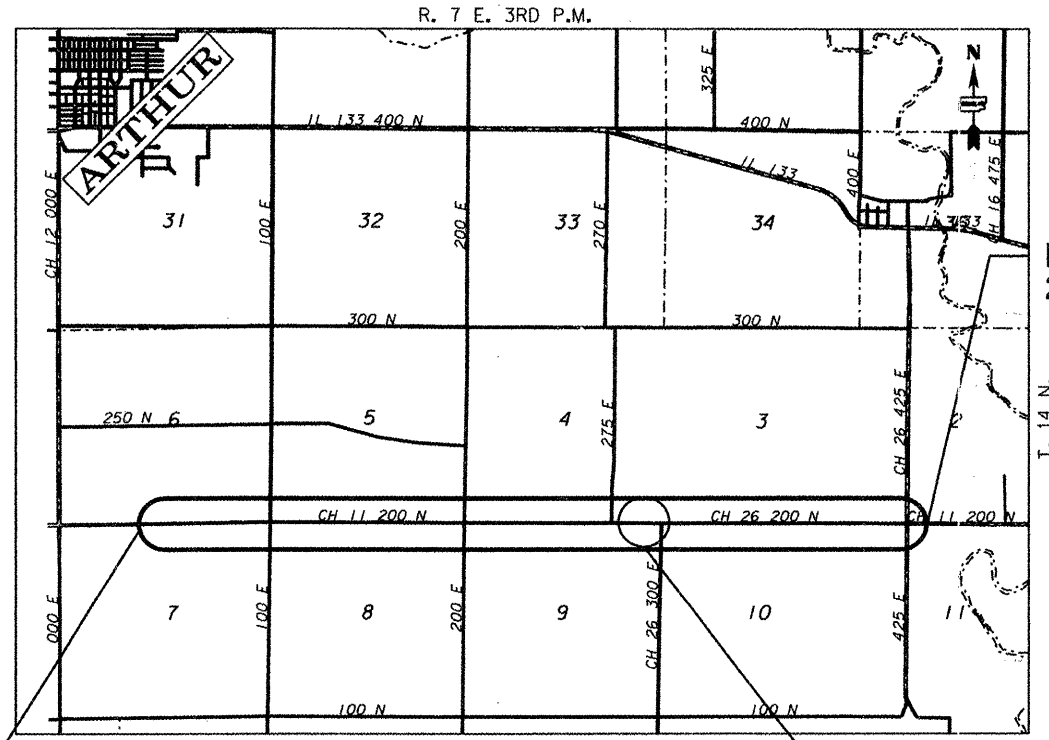
J.U.L.I.E.
 JOINT UTILITY LOCATION INFORMATION FOR EXCAVATION
 1-800-892-0123



J.E.C.
 JAMES E. CRANE, P.E.
 REGISTERED PROFESSIONAL ENGINEER
 ILLINOIS NO. 054097 EXPIRES NOVEMBER 30, 2009

3/6/08 DATE

CONTRACT NO. 91379



BEGIN CONSTRUCTION
21 + 00

DESIGN DESIGNATION - 1250 ADT
 FUNCTIONAL CLASSIFICATION - MAJOR COLLECTOR
 DESIGN SPEED - 50

PROPOSED STRUCTURE
021-4548

TOTAL LENGTH OF PROJECT = 21,100.65 FEET 3.996 MILES

END CONSTRUCTION
232 + 00.65

APPROVED Maren Co 20 08
 COUNTY ENGINEER

PASSED 3/17 20 08
David A. Soil
 DISTRICT FIVE ENGINEER OF LOCAL ROADS & STREETS

Releasing For Bid Based on Limited Review 3/18 20 08
Joseph E. Loner
 DEPUTY DIRECTOR OF HIGHWAYS,
 REGION THREE ENGINEER
 STATE OF ILLINOIS
 DEPARTMENT OF TRANSPORTATION

PRINTED BY THE AUTHORITY
OF THE STATE OF ILLINOIS