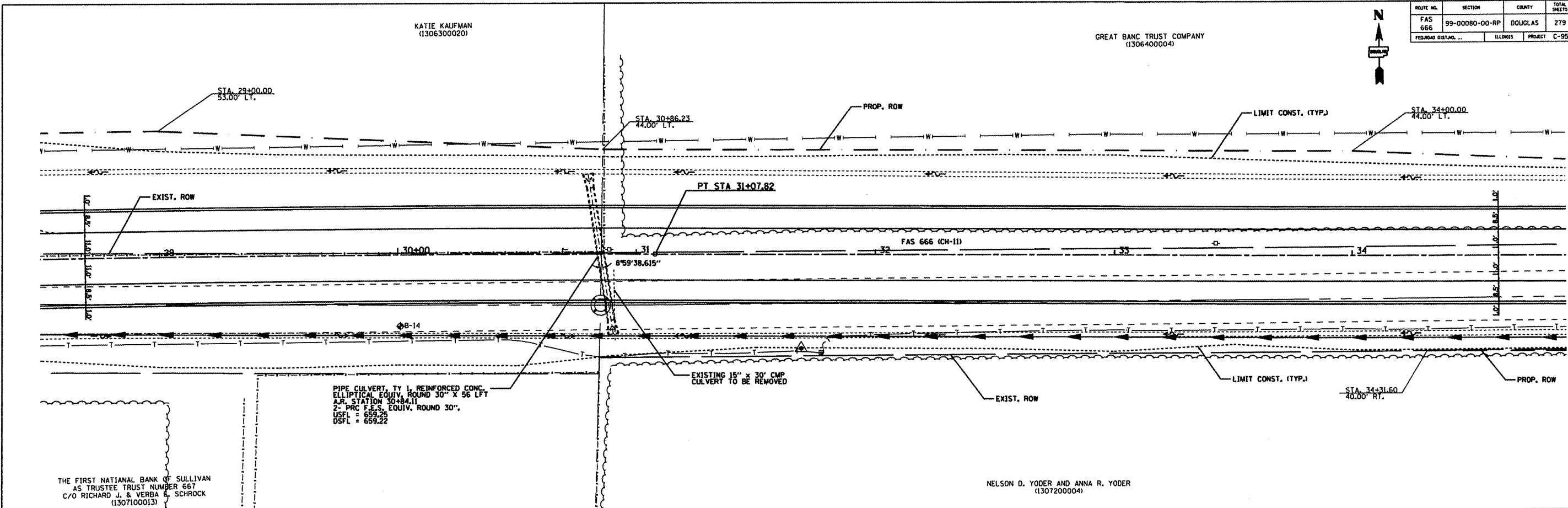


ROUTE NO.	SECTION	COUNTY	TOTAL SHEETS	SHEET NO.
FAS 666	99-00080-00-RP	DOUGLAS	279	20
FED. ROAD DIST. NO.		ILLINOIS	PROJECT C-95-323-07	

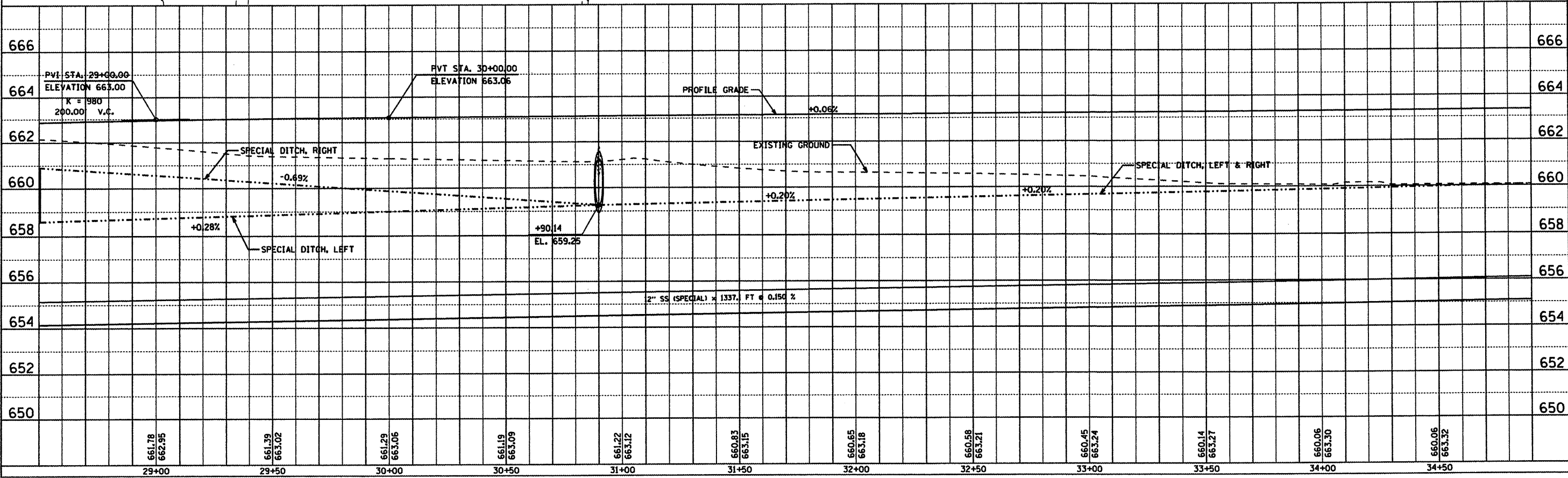


PIPE CULVERT, TY 1, REINFORCED CONC. ELLIPTICAL EQUIV. ROUND 30" X 56 LFT A.M. STATION 30+84.11 2" PRC F.E.S. EQUIV. ROUND 30", USEL = 659.25 DSFL = 659.22

EXISTING 15" x 30" CMP CULVERT TO BE REMOVED

THE FIRST NATIONAL BANK OF SULLIVAN AS TRUSTEE TRUST NUMBER 667 C/O RICHARD J. & VERBA E. SCHROCK (1307100013)

NELSON D. YODER AND ANNA R. YODER (1307200004)



PLAN

DATE	
BY	
DESIGNED	
CHECKED	
IN CHARGE	
FILE NO.	
NO.	

PROFILE

DATE	
BY	
DESIGNED	
CHECKED	
IN CHARGE	
FILE NO.	
NO.	