

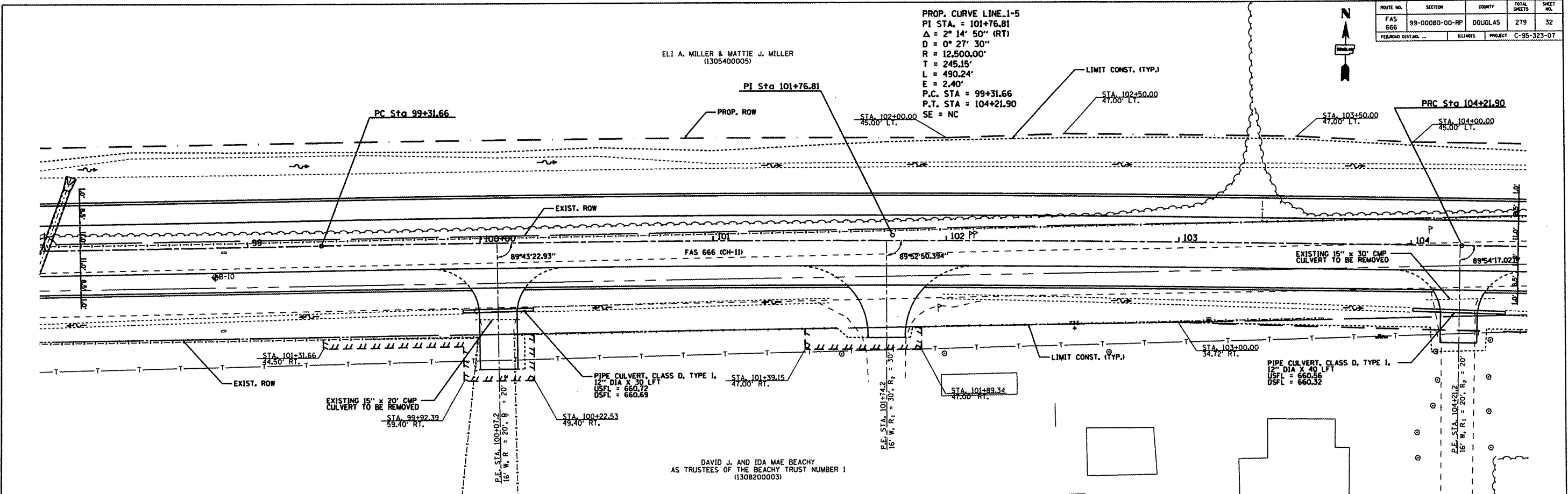
| ROUTE NO. | SECTION | COUNTY | TOTAL SHEETS | SHEET NO. |
|---------------------|---------------|---------|--------------|-----------|
| FAS 666 | 99-0080-00-RP | DOUGLAS | 279 | 32 |
| FED. ROAD DIST. NO. | ILLINOIS | PROJECT | C-95-323-07 | |

PROP. CURVE LINE 1-5
 PI STA. = 101+76.81
 $\Delta = 2^\circ 14' 50''$ (RT)
 $D = 0^\circ 27' 30''$
 $R = 12,500.00'$
 $T = 245.15'$
 $L = 490.24'$
 $E = 2.40'$
 P.C. STA = 99+31.66
 P.T. STA = 104+21.90
 SE = NC

ELI A. MILLER & MATTIE J. MILLER
 (1305400005)

PI Sta 101+76.81

PRC Sta 104+21.90



DAVID J. AND IDA MAE BEACHY
 AS TRUSTEES OF THE BEACHY TRUST NUMBER 1
 (1308200003)

PLAN

| DATE | BY |
|------|----|
| | |

REVISIONS
 NO. DATE DESCRIPTION
 1.

PROFILE

| DATE | BY |
|------|----|
| | |

REVISIONS
 NO. DATE DESCRIPTION
 1.

