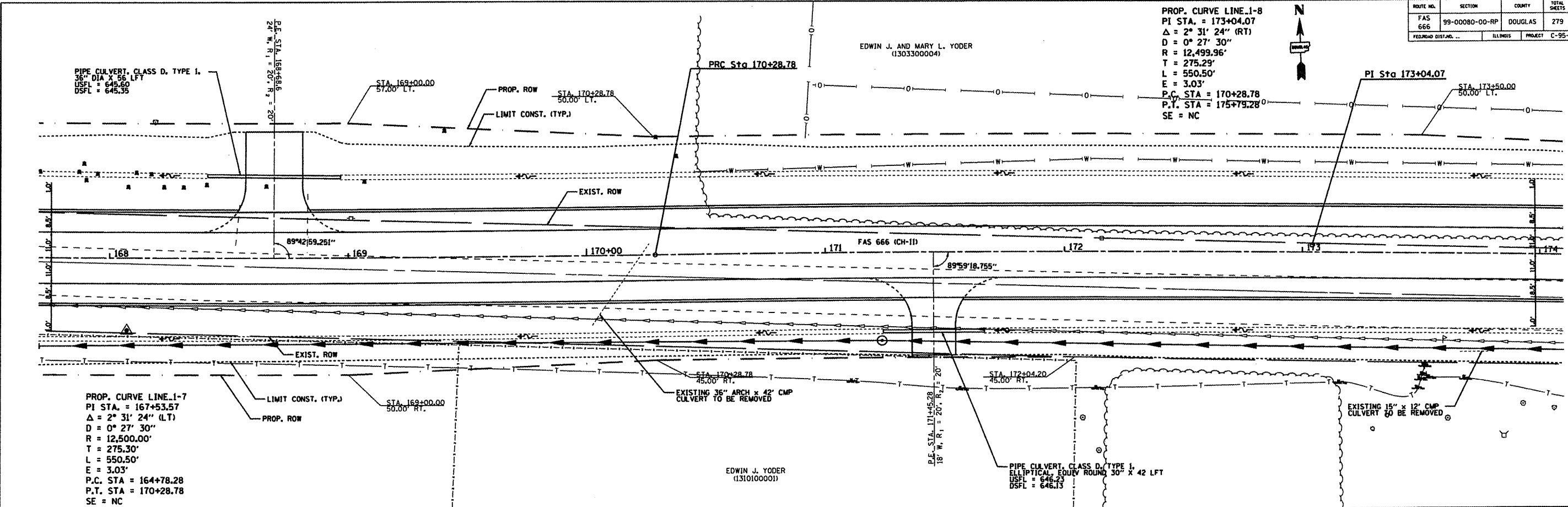


ROUTE NO.	SECTION	COUNTY	TOTAL SHEETS	SHEET NO.
FAS 666	99-00080-00-RP	DOUGLAS	279	44
FEDERAL DIST. NO. ...		ILLINOIS	PROJECT C-95-323-07	

**PROP. CURVE LINE 1-8**  
 PI STA. = 173+04.07  
 Δ = 2° 31' 24" (RT)  
 D = 0° 27' 30"  
 R = 12,499.96'  
 T = 275.29'  
 L = 550.50'  
 E = 3.03'  
 P.C. STA = 170+28.78  
 P.T. STA = 175+79.28  
 SE = NC



DATE	BY

DATE	BY

