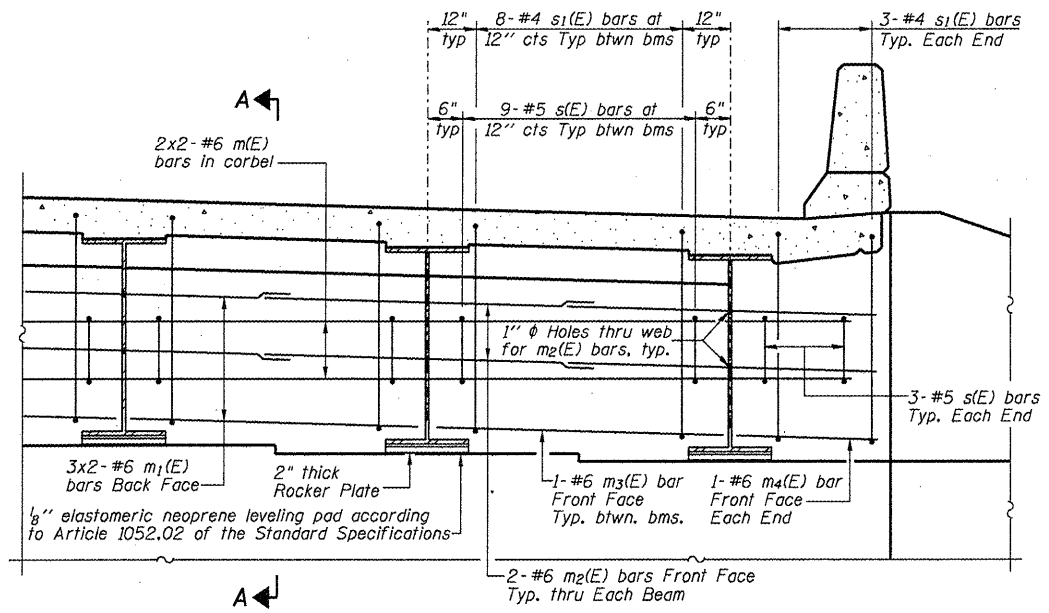
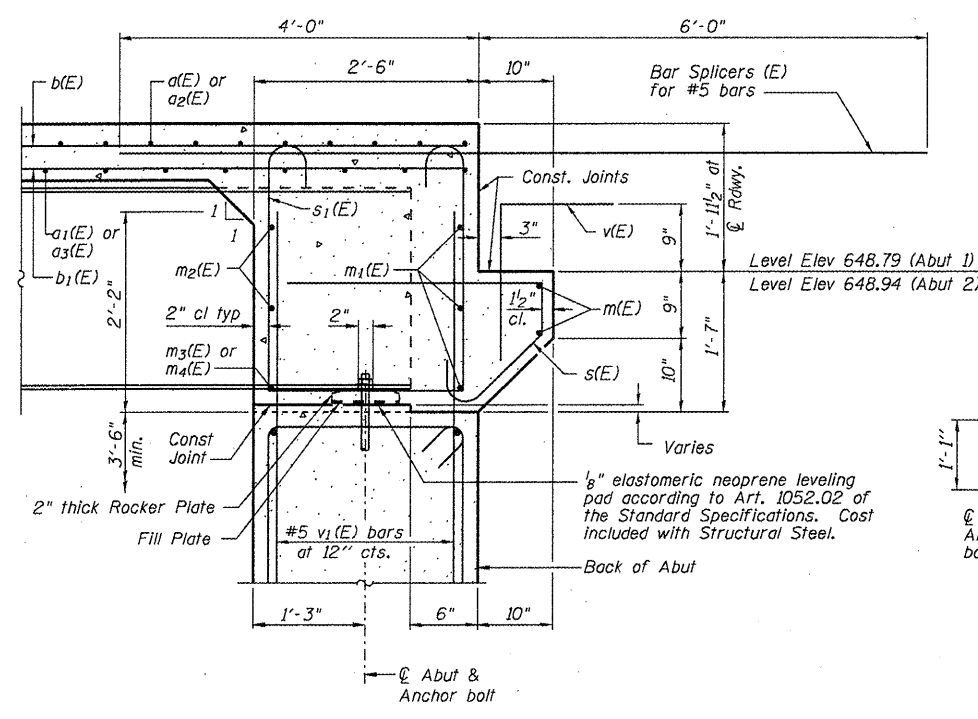


ROUTE NO.	SECTION	COUNTY	TOTAL SHEETS	SHEET NO.
#99-00080-00-RP		DOUGLAS	279	67
FED. ROAD DIST. NO.	LLANOS	PROJECT		

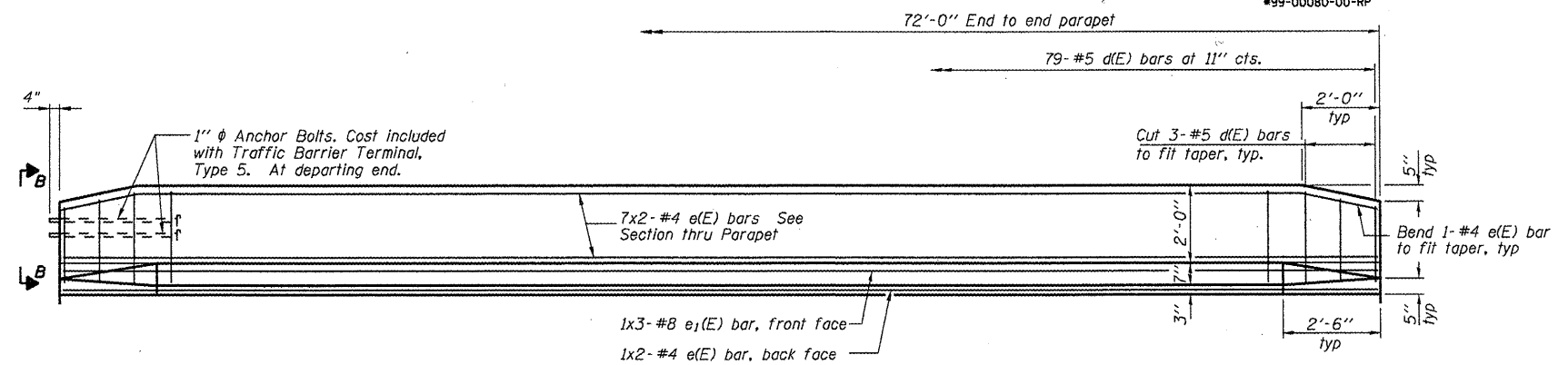


DIAPHRAGM ELEVATION AT ABUTMENT



SECTION A-A

Notes:
Reinforcement bars in diaphragm are billed with superstructure on this sheet.
Concrete in diaphragm is included with Concrete Superstructure on this sheet.
The s(E) and s1(E) bars shall be placed parallel to the beams. Spacing for these bars shall be at right angles to the beams.



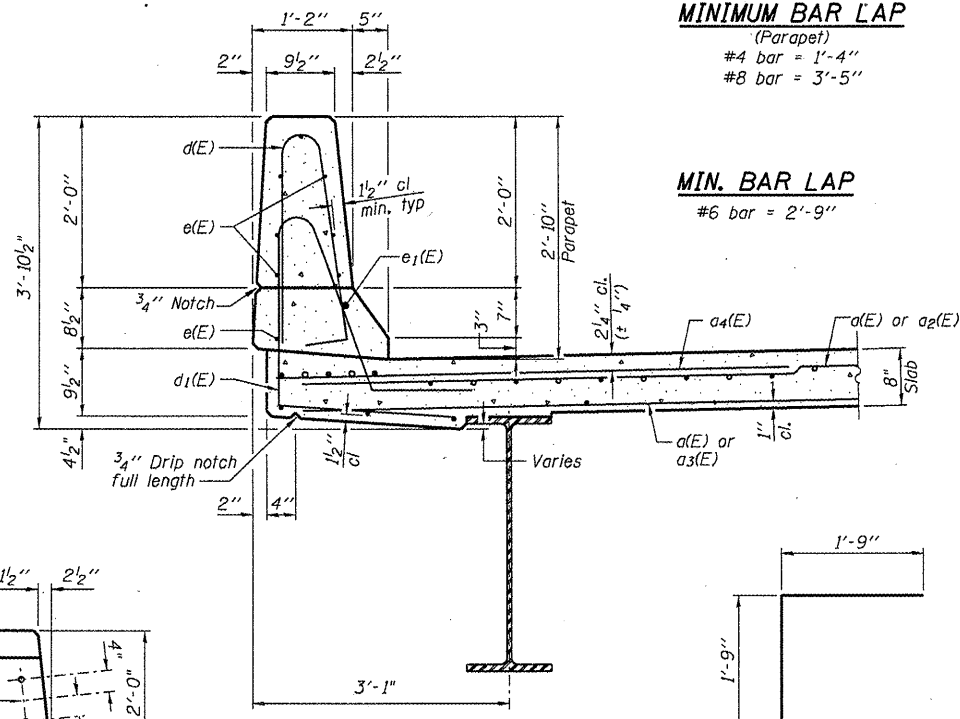
INSIDE ELEVATION OF PARAPET

MINIMUM BAR LAP
(Parapet)
#4 bar = 1'-4"
#8 bar = 3'-5"

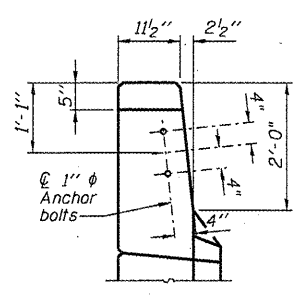
SUPERSTRUCTURE
BILL OF MATERIAL

Bar	No.	Size	Length	Shape
a(E)	157	#5	26'-2"	
a1(E)	108	#5	20'-0"	
a2(E)	157	#5	17'-2"	
a3(E)	108	#5	23'-3"	
a4(E)	157	#6	6'-0"	
b(E)	135	#5	25'-4"	
b1(E)	168	#5	19'-7"	
d(E)	158	#5	5'-7"	
d1(E)	158	#5	8'-2"	
e(E)	32	#4	36'-6"	
e1(E)	6	#8	24'-10"	
m(E)	8	#6	21'-5"	
m1(E)	12	#6	22'-4"	
m2(E)	20	#6	10'-7"	
m3(E)	8	#6	8'-8"	
m4(E)	4	#6	2'-9"	
s(E)	84	#5	5'-10"	
s1(E)	76	#4	9'-2"	
v(E)	80	#5	3'-6"	
Reinforcement Bars, Epoxy Coated		Pound	26,190	
Concrete Superstructure		Cu. Yds.	117	
Bar Splicers		Each	78	

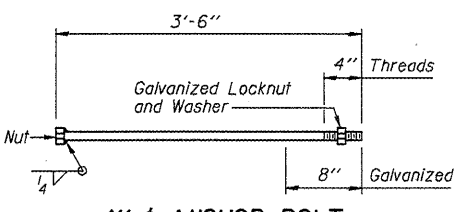
Bars indicated thus 1 x 3 - #5 etc. indicates 1 line of bars with 3 lengths per line.



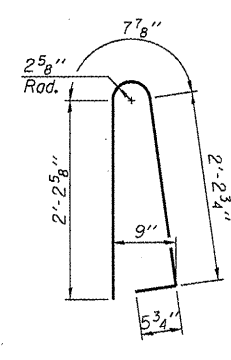
SECTION THRU PARAPET



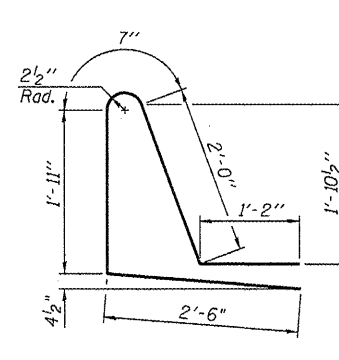
VIEW B-B



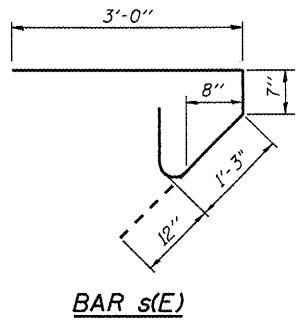
1" ANCHOR BOLT



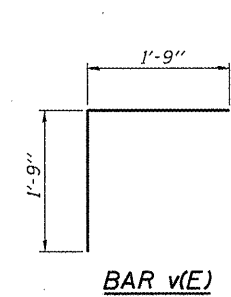
BAR d(E)



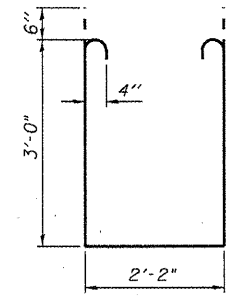
BAR d1(E)



BAR s(E)



BAR v(E)



BAR s1(E)

CH 11 (FA 666) OVER BIG SLOUGH
SUPERSTRUCTURE DETAILS

REVISIONS	SECTION 99-00080-00-RP	CH 11 (FAS 666)	DRAWN BY DATE
NO. DATE INITIALS	SN 021-4548	COUNTY	R KING 01/08
1 JMB 05/08	DOUGLAS		CHECKED BY DATE
2			JMB 01/08
3			BOOK NUMBER
4			
5			
6			
7			
8			
9			
10			

HOMER L. CHASTAIN & ASSOCIATES, LLP
CONSULTING ENGINEERS
184-00177

DECATUR CHICAGO
317-422-8544 770-714-0850

ROCKFORD
815-499-0050

PROJECT No. 5149
SHEET No.