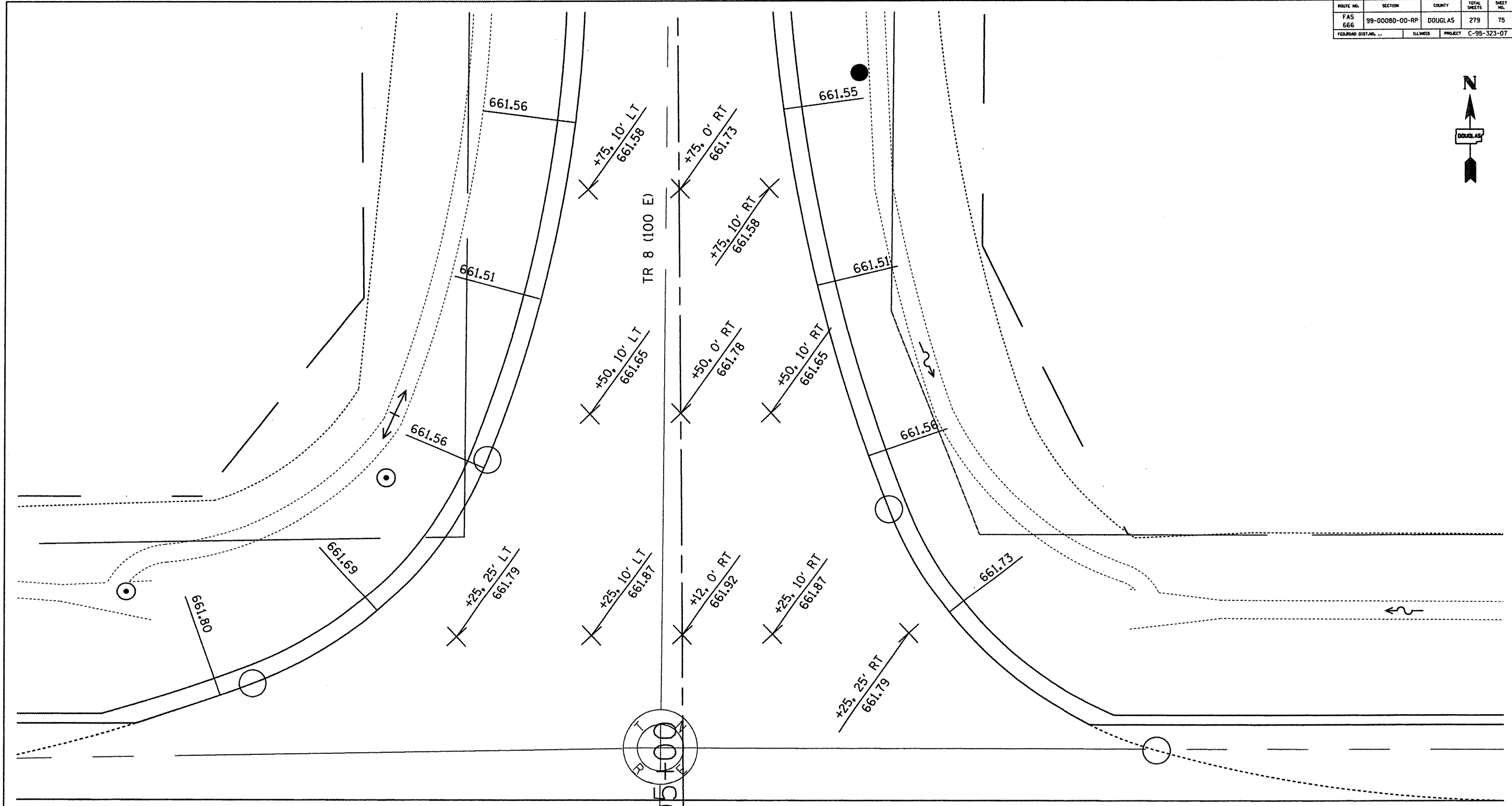


ROUTE NO. FAS 666	SECTION 99-00080-00-RP	COUNTY DOUGLAS	TOTAL SHEETS 279	SHEET NO. 75
FEDERAL DIST. NO. ...		ILLINOIS	PROJECT C-95-323-07	



POT STA 57+37.37 (FAS 666-CH 11)
 POT STA 204+95.59 (TR 8- 100E)

90°33'42.757"

FAS 666 (CH-11)

57

Revisions			Surveyed: DLE	INTERSECTION DETAIL FAS ROUTE 666 (CH 11) DOUGLAS COUNTY, ILLINOIS DOUGLAS COUNTY HIGHWAY DEPARTMENT TUSCOLA, ILLINOIS
1	DATE	INITIALS	Designed: JEC	
2			Drawn: JEC	
3			Checked: ---	
4			Approved: JEC	
5				
6				
7				
Job No.:	NA	Date:	1/08	