



LARRY E. MILLER AND VERDA MILLER
(1305400005)

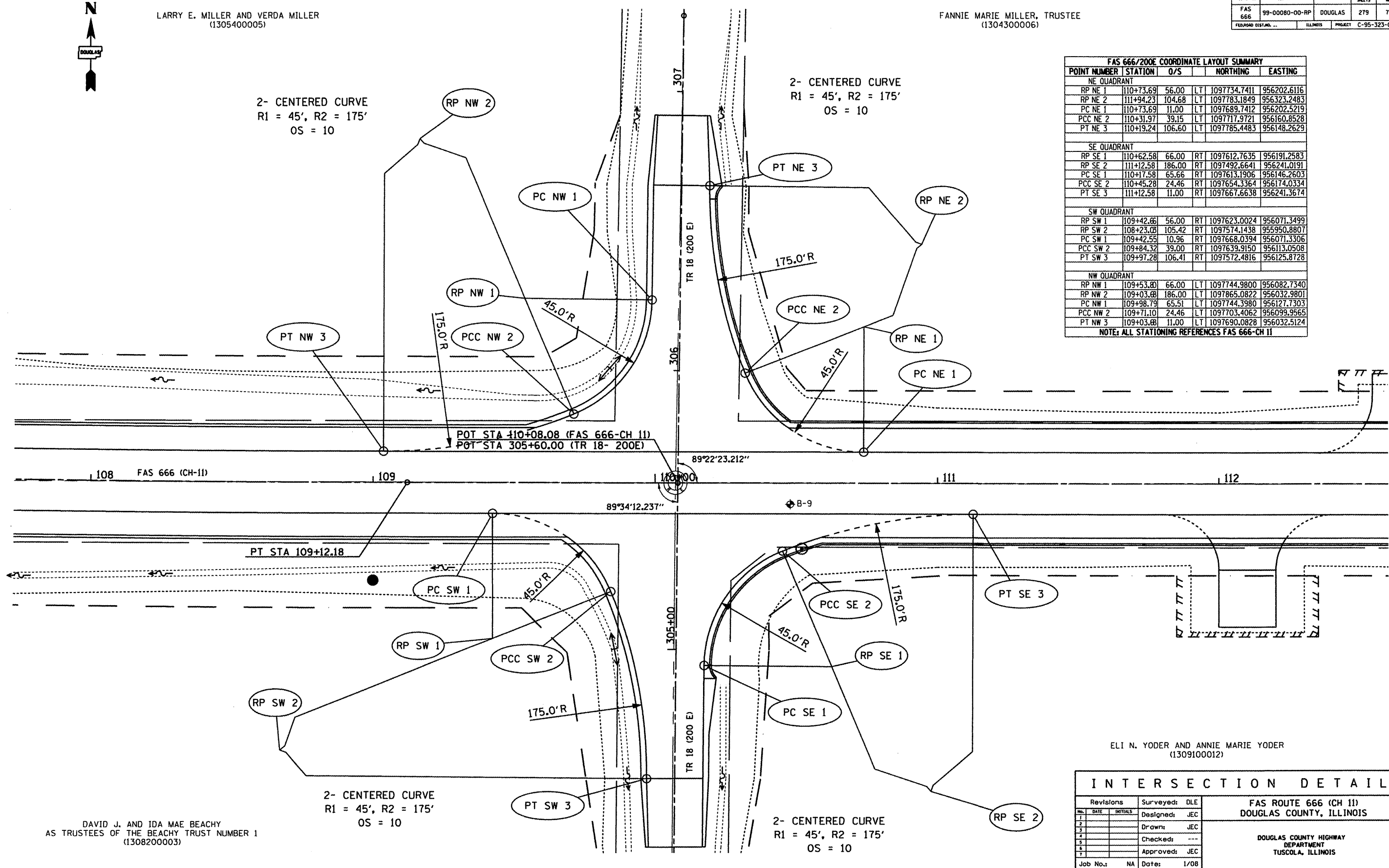
FANNIE MARIE MILLER, TRUSTEE
(1304300006)

ROUTE NO.	SECTION	COUNTY	TOTAL SHEETS	SHEET NO.
FAS 666	99-0080-00-RP	DOUGLAS	279	76
FEDORAD DIST. NO.		ILLINOIS	PROJECT	C-95-323-07

FAS 666/200E COORDINATE LAYOUT SUMMARY

POINT NUMBER	STATION	O/S	NORTHING	EASTING
NE QUADRANT				
RP NE 1	110+73.69	56.00	LT	1097734.7411 956202.6116
RP NE 2	111+94.23	104.68	LT	1097783.1849 956323.2483
PC NE 1	110+73.69	11.00	LT	1097689.7412 956202.5219
PCC NE 2	110+31.97	39.15	LT	1097717.9721 956160.8528
PT NE 3	110+19.24	106.60	LT	1097785.4483 956148.2629
SE QUADRANT				
RP SE 1	110+62.58	66.00	RT	1097612.7635 956191.2583
RP SE 2	111+12.58	186.00	RT	1097492.6641 956241.0191
PC SE 1	110+17.58	65.66	RT	1097613.1906 956146.2603
PCC SE 2	110+45.28	24.46	RT	1097654.3364 956174.0334
PT SE 3	111+12.58	11.00	RT	1097667.6638 956241.3674
SW QUADRANT				
RP SW 1	109+42.66	56.00	RT	1097623.0024 956071.3499
RP SW 2	108+23.08	105.42	RT	1097574.1438 955950.8807
PC SW 1	109+42.55	10.96	RT	1097668.0394 956071.3306
PCC SW 2	109+84.32	39.00	RT	1097639.9150 956113.0508
PT SW 3	109+97.28	106.41	RT	1097572.4816 956125.8728
NW QUADRANT				
RP NW 1	109+53.80	66.00	LT	1097744.9800 956082.7340
RP NW 2	109+03.68	186.00	LT	1097865.0822 956032.9801
PC NW 1	109+98.79	65.51	LT	1097744.3980 956127.7303
PCC NW 2	109+71.10	24.46	LT	1097703.4062 956099.9565
PT NW 3	109+03.68	11.00	LT	1097690.0828 956032.5124

NOTE: ALL STATIONING REFERENCES FAS 666-CH 11



DAVID J. AND IDA MAE BEACHY
AS TRUSTEES OF THE BEACHY TRUST NUMBER 1
(1308200003)

ELI N. YODER AND ANNIE MARIE YODER
(1309100012)

INTERSECTION DETAIL

Revisions	Surveyed:	DLE	FAS ROUTE 666 (CH 11) DOUGLAS COUNTY, ILLINOIS
1	Designed:	JEC	
2	Drawn:	JEC	
3	Checked:	---	
4	Approved:	JEC	
5			
6			
Job No.:	NA	Date:	1/08

DOUGLAS COUNTY HIGHWAY DEPARTMENT
TUSCOLA, ILLINOIS