

ROUTE NO.	SECTION	COUNTY	TOTAL SHEETS	SHEET NO.
FAS 666	99-00080-00-RP	DOUGLAS	279	77
FED. ROAD DIST. NO. ...	ILLINOIS	PROJECT	C-95-323-07	

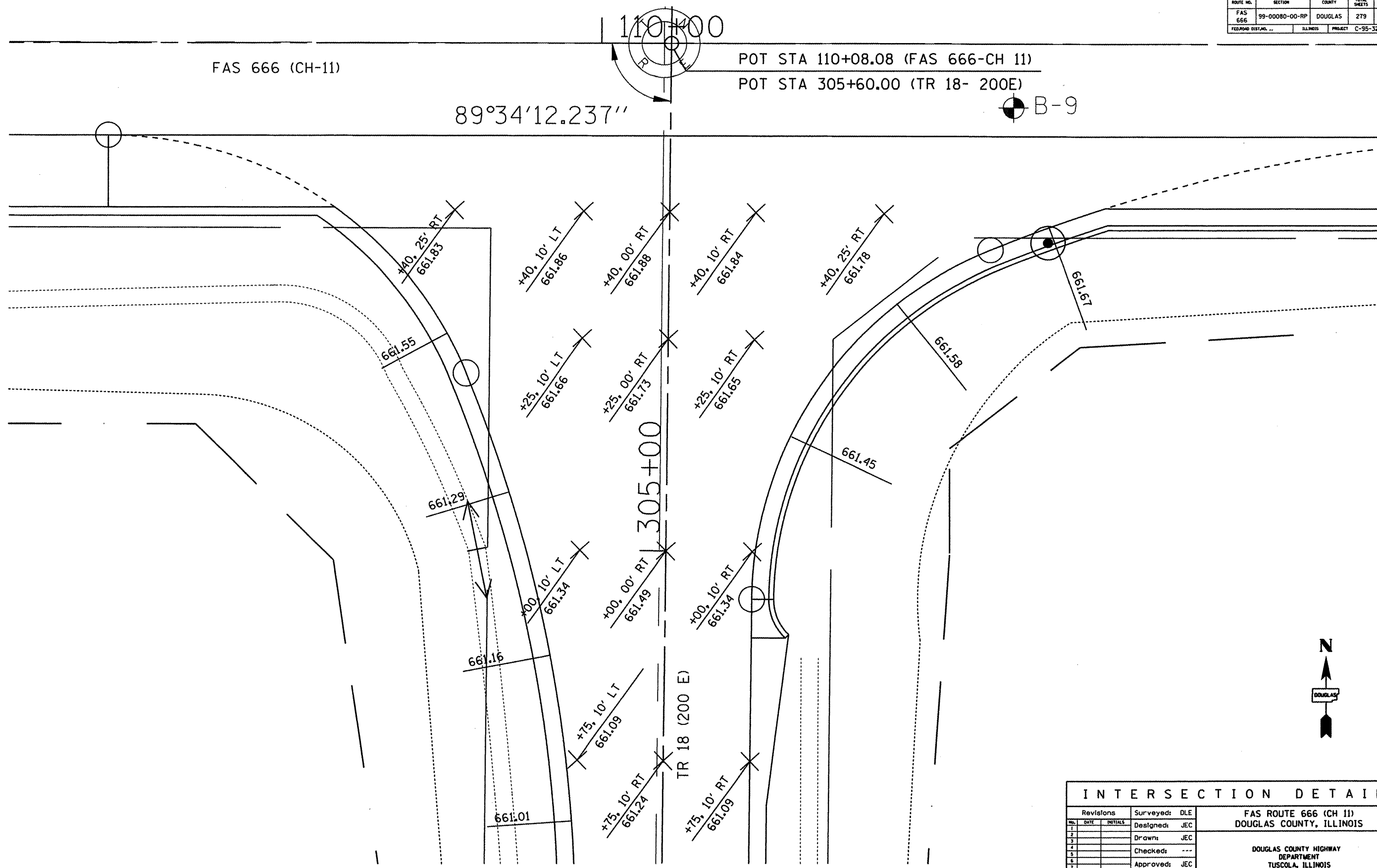
FAS 666 (CH-11)

POT STA 110+08.08 (FAS 666-CH 11)

POT STA 305+60.00 (TR 18- 200E)

89°34'12.237"

B-9



INTERSECTION DETAIL			
Revisions	Surveyed: DLE	FAS ROUTE 666 (CH 11)	
1	Designed: JEC	DOUGLAS COUNTY, ILLINOIS	
2	Drawn: JEC	DOUGLAS COUNTY HIGHWAY DEPARTMENT TUSCOLA, ILLINOIS	
3	Checked: ---		
4	Approved: JEC		
5	Job No.: NA		
6	Date: 1/08		