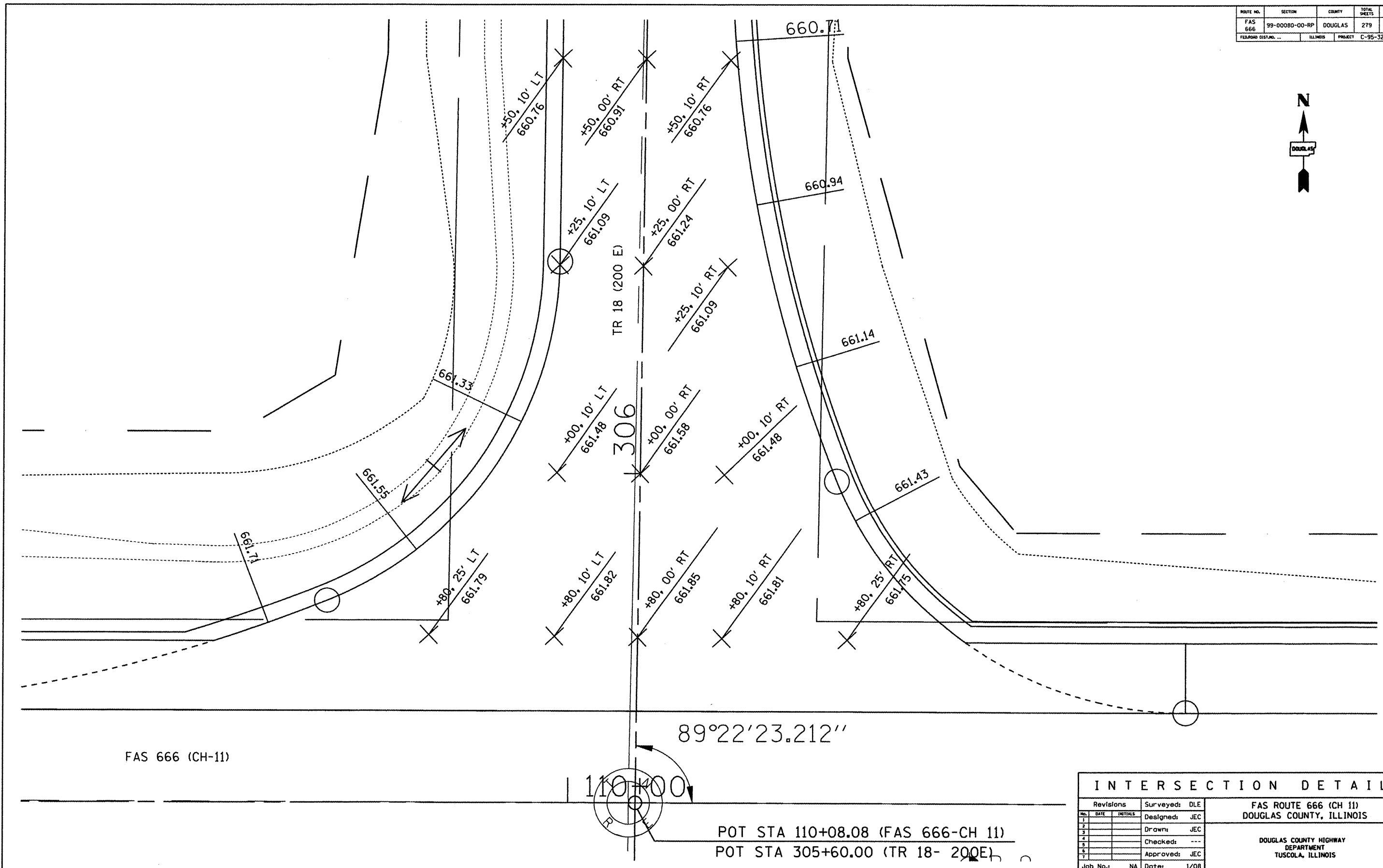
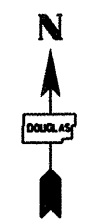


ROUTE NO.	SECTION	COUNTY	TOTAL SHEETS	SHEET NO.
FAS 666	99-00080-00-RP	DOUGLAS	279	78
FEDERAL DIST. NO. ...	ILLINOIS	PROJECT	C-95-323-07	



FAS 666 (CH-11)

110+00.00

89°22'23.212"

POT STA 110+08.08 (FAS 666-CH 11)  
 POT STA 305+60.00 (TR 18- 200E)

INTERSECTION DETAIL

Revisions		Surveys: DLE
1	DATE	INITIALS
2		Designed: JEC
3		Drawn: JEC
4		Checked: ---
5		Approved: JEC
Job No.:	NA	Date: 1/08

FAS ROUTE 666 (CH 11)  
 DOUGLAS COUNTY, ILLINOIS

DOUGLAS COUNTY HIGHWAY  
 DEPARTMENT  
 TUSCOLA, ILLINOIS