



ROUTE NO.	SECTION	COUNTY	TOTAL SHEETS	SHEET NO.
FAS 666	99-00080-00-RP	DOUGLAS	279	79
FIELD NO. DIST. ...		ILLINOIS	PROJECT C-95-323-07	

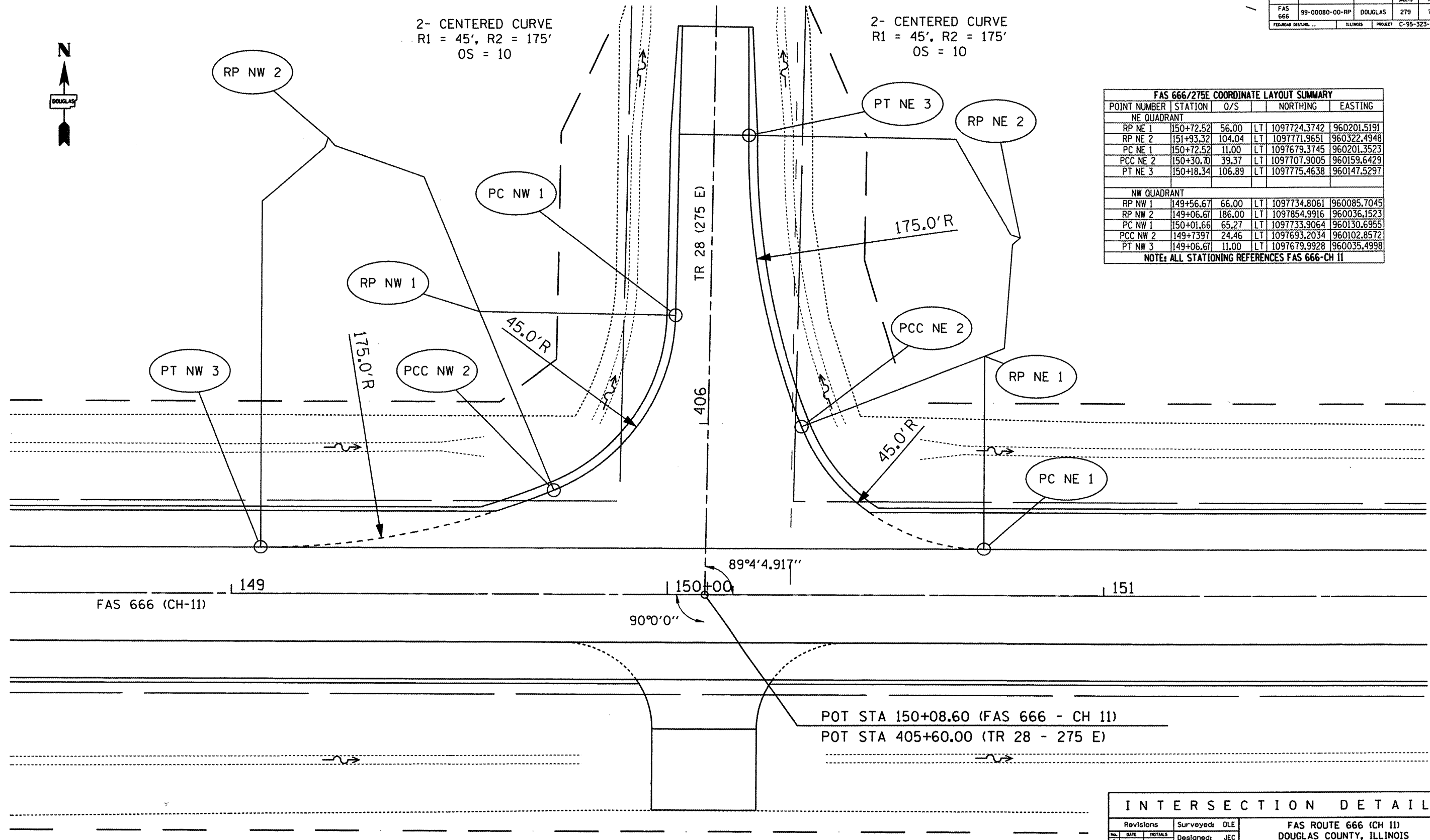
2- CENTERED CURVE
 R1 = 45', R2 = 175'
 OS = 10

2- CENTERED CURVE
 R1 = 45', R2 = 175'
 OS = 10

FAS 666/275E COORDINATE LAYOUT SUMMARY

POINT NUMBER	STATION	O/S		NORTHING	EASTING
NE QUADRANT					
RP NE 1	150+72.52	56.00	LT	1097724.3742	960201.5191
RP NE 2	151+93.32	104.04	LT	1097771.9651	960322.4948
PC NE 1	150+72.52	11.00	LT	1097679.3745	960201.3523
PCC NE 2	150+30.70	39.37	LT	1097707.9005	960159.6429
PT NE 3	150+18.34	106.89	LT	1097775.4638	960147.5297
NW QUADRANT					
RP NW 1	149+56.67	66.00	LT	1097734.8061	960085.7045
RP NW 2	149+06.67	186.00	LT	1097854.9916	960036.1523
PC NW 1	150+01.66	65.27	LT	1097733.9064	960130.6955
PCC NW 2	149+73.97	24.46	LT	1097693.2034	960102.8572
PT NW 3	149+06.67	11.00	LT	1097679.9928	960035.4998

NOTE: ALL STATIONING REFERENCES FAS 666-CH 11



POT STA 150+08.60 (FAS 666 - CH 11)
 POT STA 405+60.00 (TR 28 - 275 E)

INTERSECTION DETAIL

Revisions	Surveyed:	DLE	FAS ROUTE 666 (CH 11) DOUGLAS COUNTY, ILLINOIS DOUGLAS COUNTY HIGHWAY DEPARTMENT TUSCOLA, ILLINOIS	
No. DATE INITIALS	Designed:	JEC		
	Drawn:	JEC		
	Checked:	---		
	Approved:	JEC		
Job No.:	NA	Date:		2/07