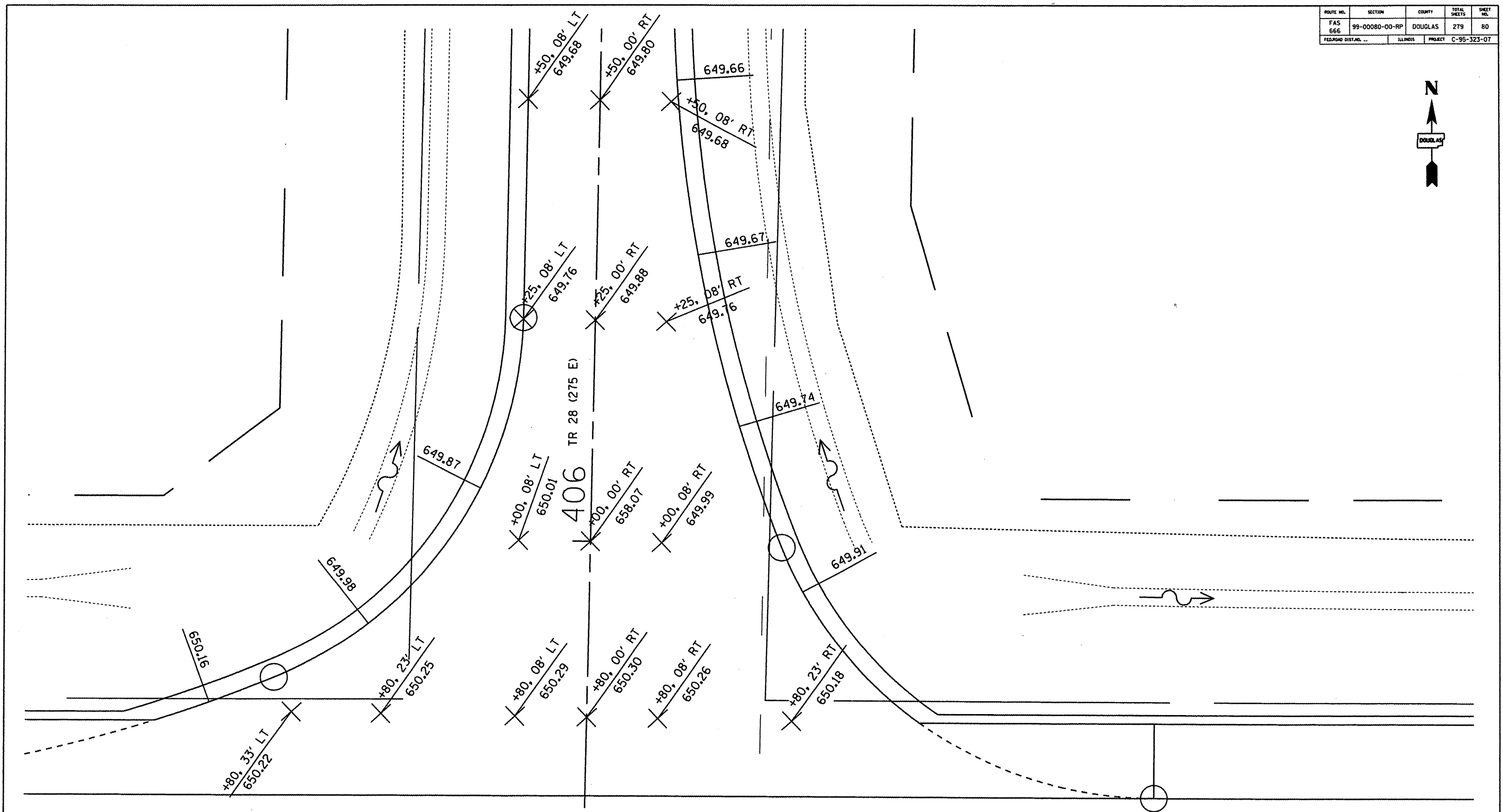


ROUTE NO.	SECTION	COUNTY	TOTAL SHEETS	SHEET NO.
FAS 666	99-00080-00-RP	DOUGLAS	279	80
FED. ROAD DIST. NO. ...	ILLINOIS	PROJECT	C-95-323-07	



POT STA 150+08.60 (FAS 666 - CH 11)
 POT STA 405+60.00 (TR 28 - 275 E)

89°4'4.917"

FAS 666 (CH-11)

150+00

INTERSECTION DETAIL

Revisions		Surveyed: DLE
No.	DATE	INITIALS
1		Designed: JEC
2		Drawn: JEC
3		Checked: ---
4		Approved: JEC
5		
6		
7		
Job No.:	NA	Date: 1/08

FAS ROUTE 666 (CH 11)
 DOUGLAS COUNTY, ILLINOIS

DOUGLAS COUNTY HIGHWAY
 DEPARTMENT
 TUSCOLA, ILLINOIS