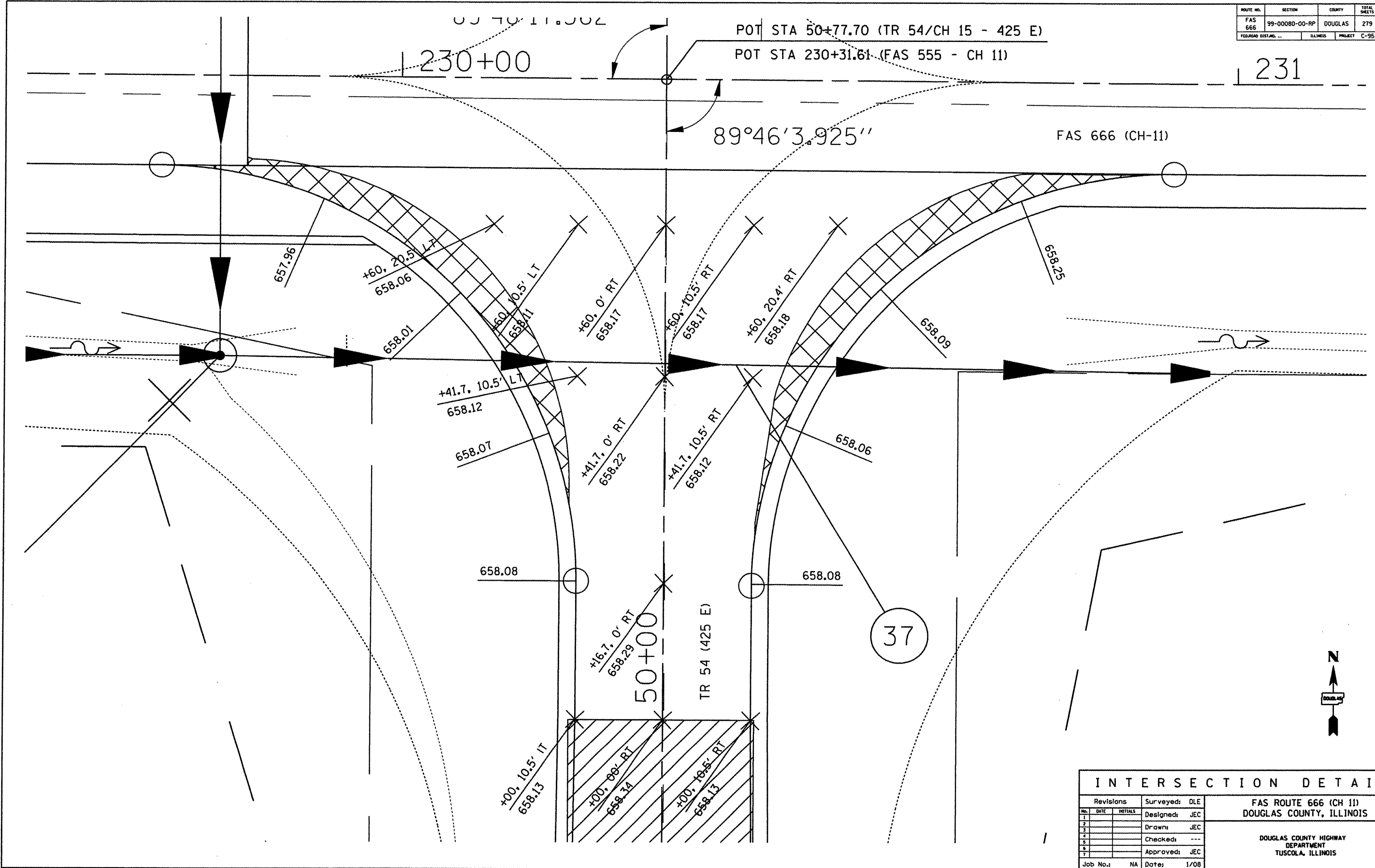


ROUTE NO.	SECTION	COUNTY	TOTAL SHEETS	SHEET NO.
FAS 666	99-00080-00-RP	DOUGLAS	279	B4
FEDERAL DIST. NO.	ILLINOIS	PROJECT	C-95-323-07	



INTERSECTION DETAIL			
Revisions		Surveyed: DLE	FAS ROUTE 666 (CH 11) DOUGLAS COUNTY, ILLINOIS
No.	DATE	INITIALS	
1			Designed: JEC
2			Drawn: JEC
3			Checked: ---
4			Approved: JEC
5			
6			
7			
Job No.: NA		Date: 1/08	