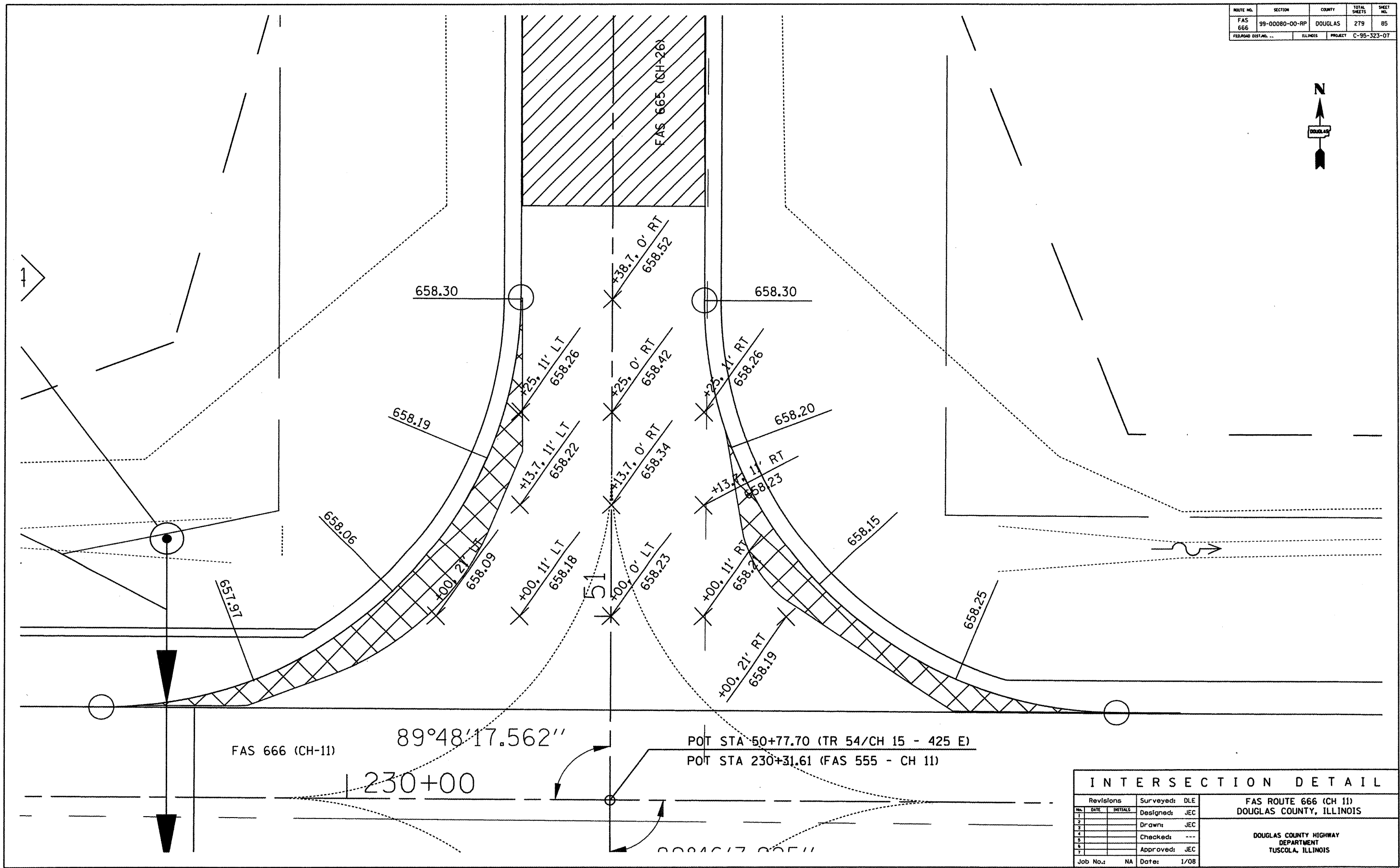


ROUTE NO.	SECTION	COUNTY	TOTAL SHEETS	SHEET NO.
FAS 666	99-00080-00-RP	DOUGLAS	279	85
FED. ROAD DIST. NO. ...	ILLINOIS	PROJECT	C-95-523-07	



FAS 666 (CH-11)

89°48'17.562"

POT STA 50+77.70 (TR 54/CH 15 - 425 E)

POT STA 230+31.61 (FAS 555 - CH 11)

230+00

INTERSECTION DETAIL

Revisions	Surveyed: DLE
1	Designed: JEC
2	Drawn: JEC
3	Checked: ---
4	Approved: JEC
5	
6	
7	
Job No.: NA	Date: 1/08

FAS ROUTE 666 (CH 11)
DOUGLAS COUNTY, ILLINOIS

DOUGLAS COUNTY HIGHWAY
DEPARTMENT
TUSCOLA, ILLINOIS