

CONTRACT 91379				
ROUTE NO.	SECTION	COUNTY	TOTAL SHEETS	SHEET NO.
FAS 666	99-00080-00-RP	DOUGLAS	279	91
FEDROAD DIST. NO. ...	ILLINOIS	PROJECT	C-95-323-07	

EROSION CONTROL SEQUENCE

1. PLACEMENT OF PERIMETER EROSION CONTROL BARRIER PRIOR TO THE COMMENCEMENT OF ANY WORK, OR AS DIRECTED BY THE ENGINEER. SEE STANDARD 280001.
2. THE PLACEMENT OF INLET & PIPE PROTECTION WITHIN 24 HOURS OF THE COMPLETION OF EACH CONSTRUCTED DRAINAGE ITEM. SEE STANDARD 280001.
3. RIPRAP SHALL BE CONSTRUCTED AS INDICATED ON THE PLANS AS SOON AS THE CONTRACTOR IS ABLE WITHOUT INTERFERING WITH OTHER ITEMS OF WORK.
4. DITCH CHECKS SHALL BE INSTALLED AFTER SEEDING AND MULCHING OPERATIONS ARE COMPLETE. SEE STANDARD 280001.

DATE	BY

PLAN

REVISIONS

NO. DATE DESCRIPTION

1. ALIGNED TO ROAD

2. PLANNED FILE NAME

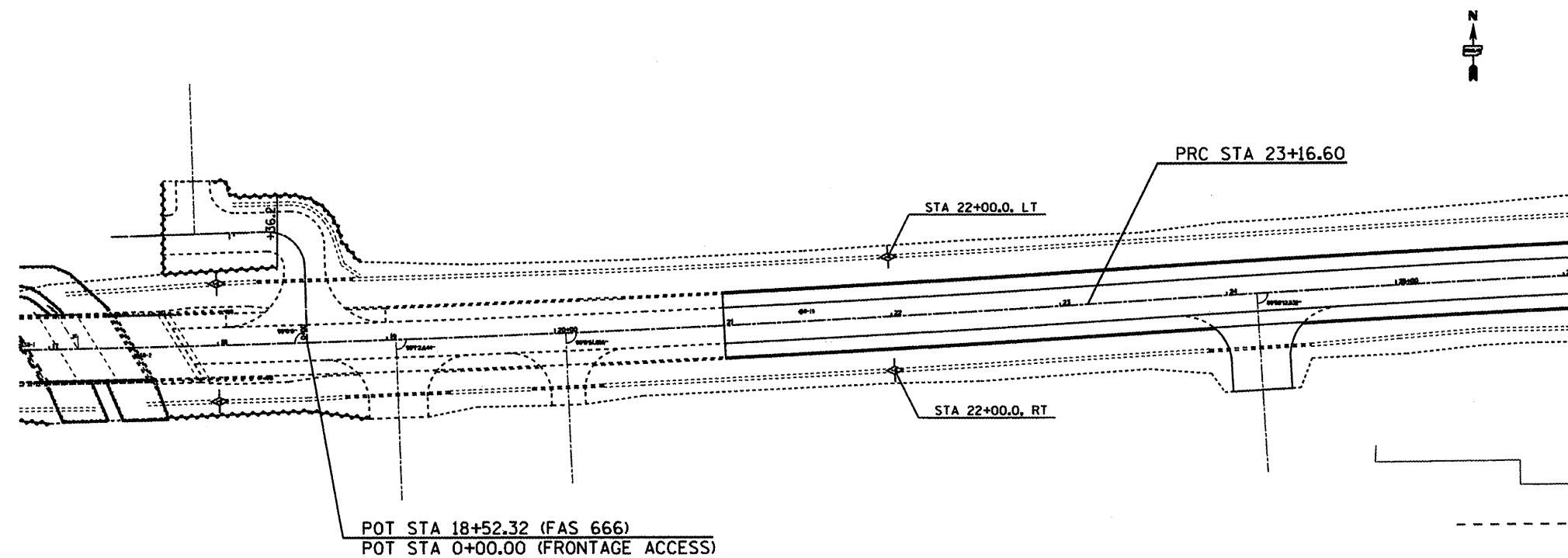
DATE	BY




PROFILE

REVISIONS

NO. DATE DESCRIPTION

1. STRUCTURE ADJUSTED



-  TEMPORARY DITCH CHECK
-  INLET AND PIPE PROTECTION
-  TEMPORARY EROSION CONTROL BARRIER