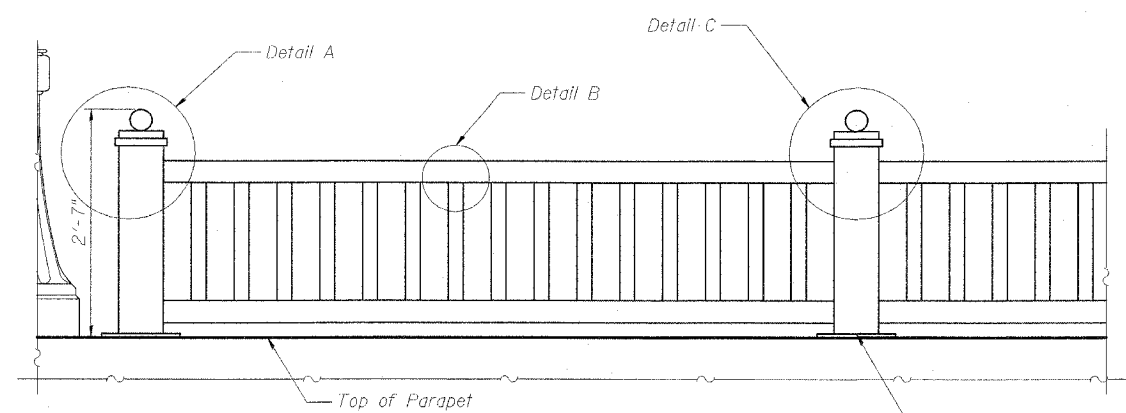
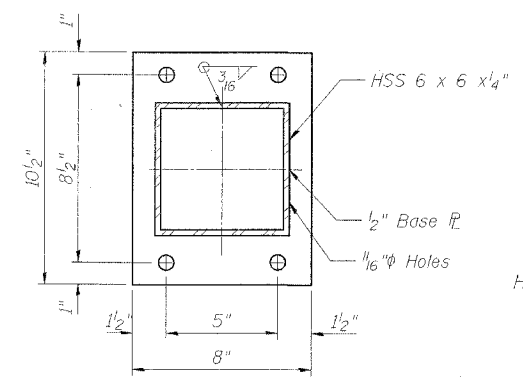


Contract # 91382

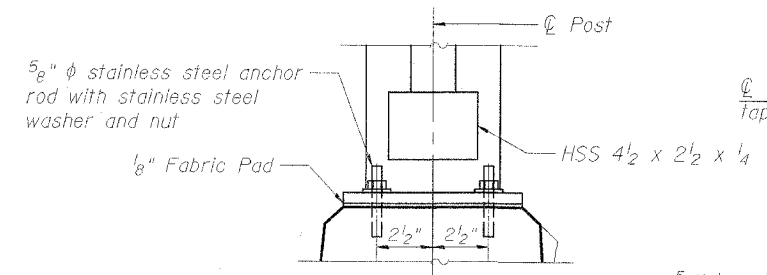
Note:  
All post, railing, splices, and bent plates shall be galvanized and painted. See Special Provisions.



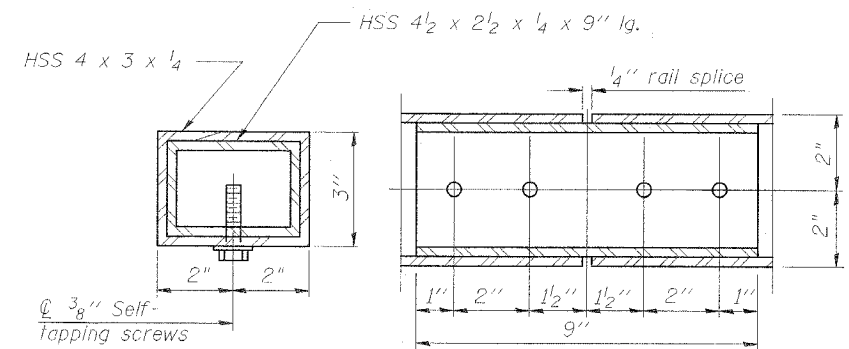
**PARAPET RAILING  
ELEVATION**



**BASE PLATE**

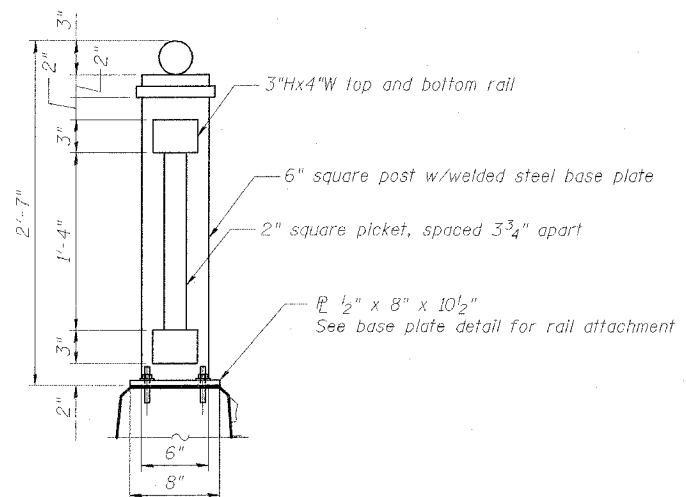


**ANCHOR BOLT DETAILS**

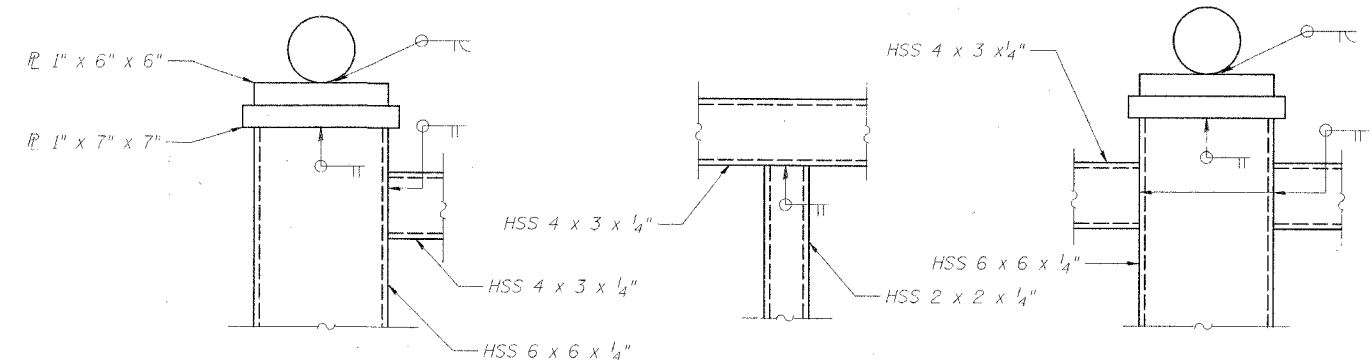


**RAIL SPLICE**

5/8" anchor rods shall be drilled and set according to Article 509.06 of the Standard Specifications. Embedment shall be according to the manufacturer's specifications.



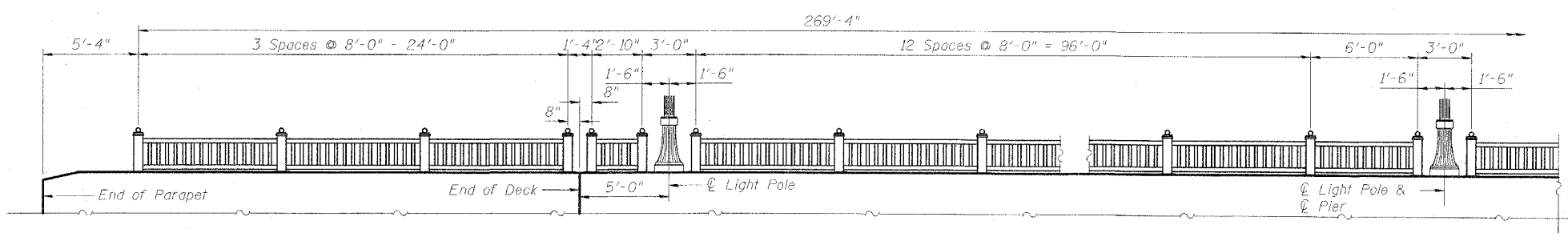
**PARAPET RAILING  
SECTION**



**DETAIL A**

**DETAIL B**

**DETAIL C**



**RAIL POST SPACING**

(Typical North and South Side of bridge. Railing is symmetric about center pier)

**BILL OF MATERIAL**

Item	Unit	Quantity
Parapet Railing, Special	Foot	539

**RAILING DETAILS  
CURTIS ROAD BRIDGE ENHANCEMENTS  
CHAMPAIGN COUNTY  
STATION 297+20.45**

DESIGNED	SLD
CHECKED	SMM
DRAWN	SLD
CHECKED	SMM

**Clark Dietz**  
ENGINEERS

DESIGN FIRM REGISTRATION  
No. 184-000450  
1817 SOUTH NEIL STREET  
SUITE 100  
CHAMPAIGN, IL 61820  
PHONE : 217.373.8900  
FAX : 217.373.8923