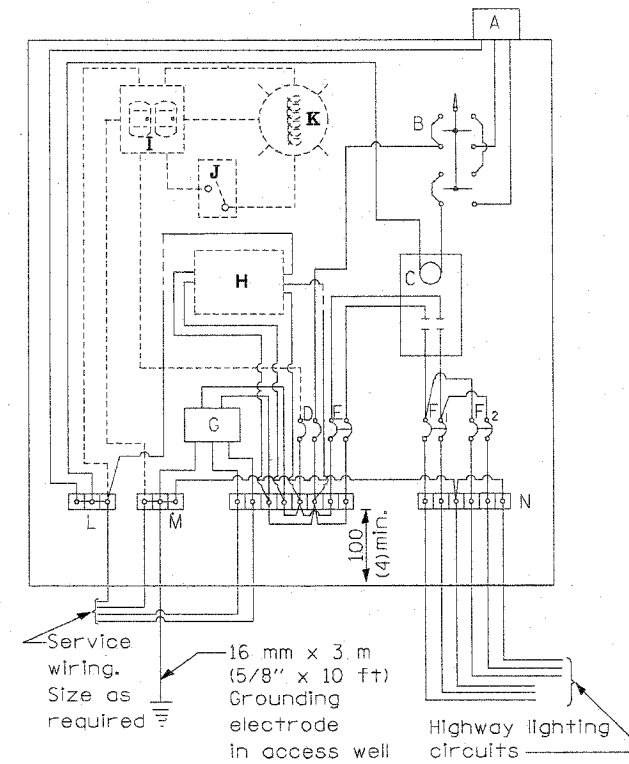


MATERIALS

- A Photocell w/ Integral surge arrester (remote mount in urban areas)
  - B 3 position selector switch HAND-OFF-AUTO
  - C 100 amp\* electrically held contactor, 120V operating coil
  - D 15 amp, 1 pole, circuit breaker
  - E 100 amp\*, 2 pole, main circuit breaker
  - F 20 amp\*, 2 pole, branch circuit breaker (typ). 2 spare c.b. required but not shown
  - G Surge arrester
  - H Transformer (see notes), 1 KVA\*, 240/480V primary, 120/240V sec, single phase
  - I GFCI duplex receptacle
  - J Single pole, single throw switch
  - K Shielded security fixture with 100W lamp
  - L Neutral bar
  - M Equipment ground bar
  - N Terminal block (typ)
- (\* = Size larger as needed)



CONTROL SCHEMATIC

GENERAL NOTES

Locate service pole and control installation adjacent to R.O.W. line with a minimum distance of 9 m (30') from the edge of pavement. Locate in close proximity to the utility transformer so the service drop does not exceed 46 m (150ft) and the total distance of overhead and underground cable (utility transformer to lighting controller) does not exceed 76 m (250ft). Exact location shall be established by the Engineer.

Wiring shall be panel board fashion. All bends shall be right angles. All runs shall vertical or parallel to panel board. Wires shall be grouped or laced.

All control installation components shall be U.L. listed.

Add receptacle, light, and switch in control cabinet, when specified.

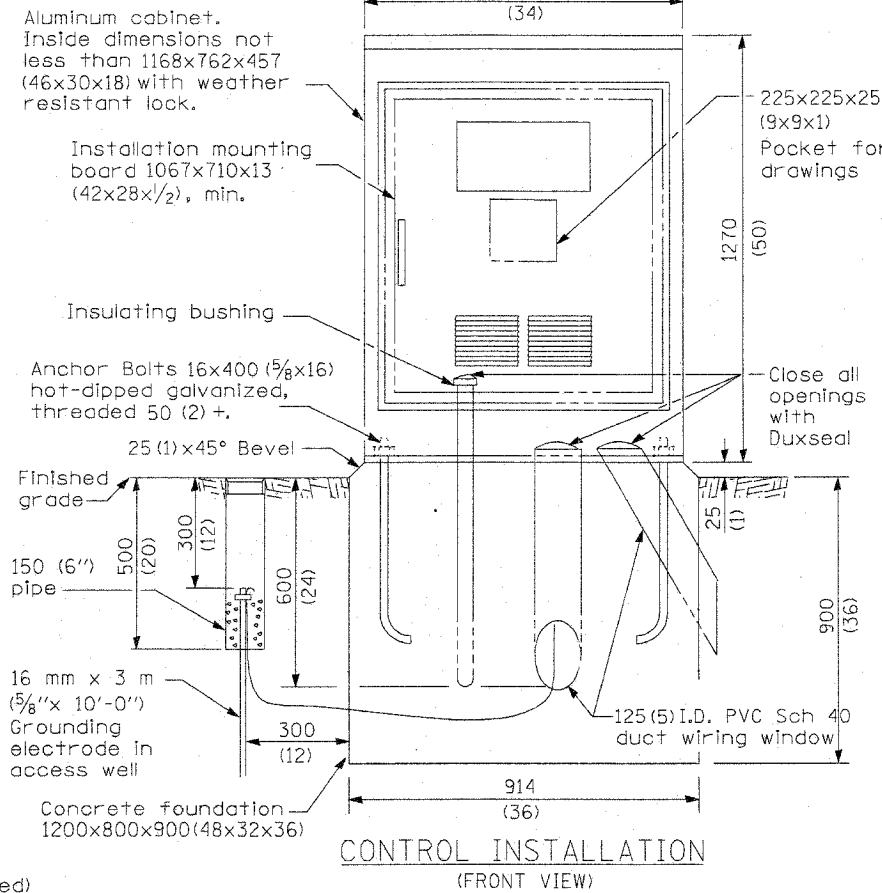
For 480 V service, a step down transformer (dashed lines) is required. Raceways shall terminate 75 (3) above top of concrete foundation.

Label equipment ground buss and neutral buss.  240 V. SERVICE  
 480 V. SERVICE

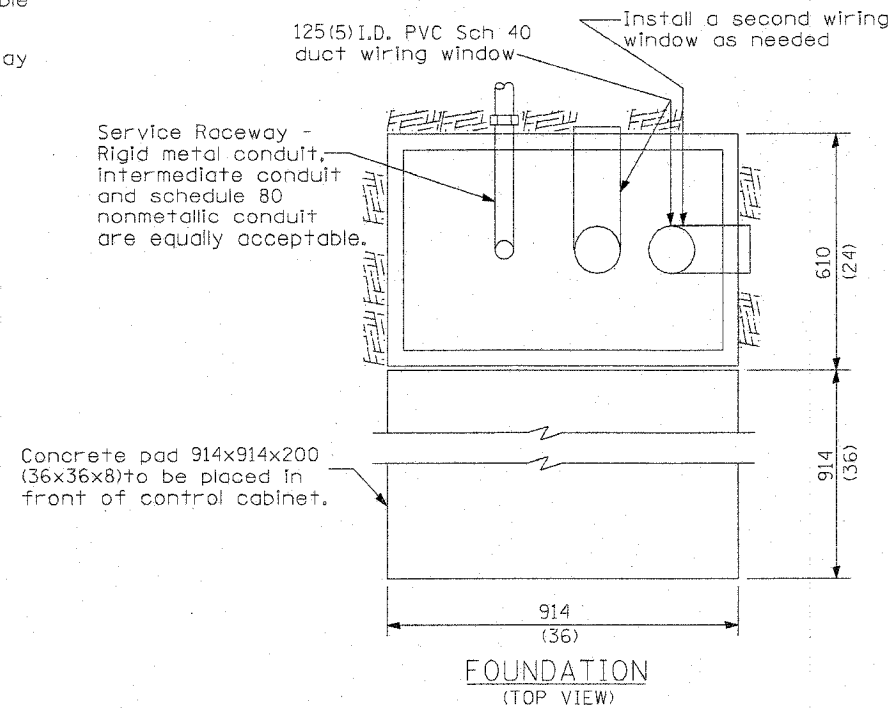
DATE	REVISIONS
	Corrected 1/19/06
3/28/08	Added page

CONTROL INSTALLATION  
Base Mount Cabinet

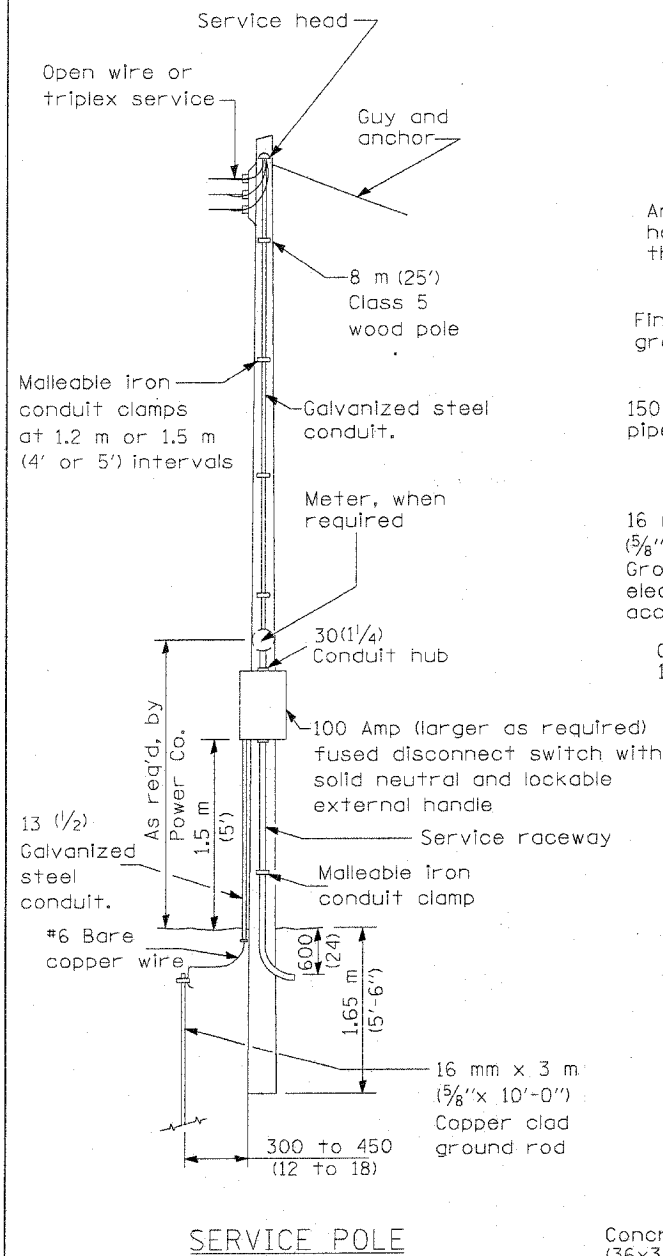
LGT005.DGN



CONTROL INSTALLATION  
(FRONT VIEW)



FOUNDATION  
(TOP VIEW)



SERVICE POLE

Concrete pad 914x914x200 (36x36x8) to be placed in front of control cabinet.

Service Raceway - Rigid metal conduit, intermediate conduit and schedule 80 nonmetallic conduit are equally acceptable.

Install a second wiring window as needed

125(5) I.D. PVC Sch 40 duct wiring window